

S-TYPE





4 TO OWN A JAGUAR 6 TO DRIVE AN S-TYPE 8 SUBLIME AND SPECTACULAR: THE S-TYPE RANGE

18 INNOVATION AND RELAXATION: S-TYPE INTERIORS 26 PERFORMANCE, ENGINEERING AND TECHNOLOGY

36 SAFETY FROM THE INSIDE OUT 38 JAGUAR VALUES 40 OPTIONS AND EQUIPMENT

50 THE JAGUAR OWNERSHIP EXPERIENCE

Car shown: S-TYPE R 4.2 LITRE V8 SUPERCHARGED ultraviolet paint. SUPPLIED BY: JAGUAR WORKS.



TO OWN A JAGUAR

For anyone who's enthusiastic about driving,
the chance to own a Jaguar is an ambition fulfilled.

Mention of the name Jaguar instills passion and
anticipation around the world. It stands for design
that is instantly recognisable yet continuously
evolving. It promises and delivers legendary levels of
comfort and sporty handling. Plus the benefit of years
of competition at the highest levels of motor sport,
to bring you responsive power with a sheer
adrenaline thrill.

To own a Jaguar is to experience a unique spirit.
The spirit of emotional engineering.





TO DRIVE AN S-TYPE



SUBLIME AND SPECTACULAR

THE S-TYPE RANGE



The S-TYPE family begins with the 2.5 litre V6 models, offering class-leading power and torque, and including Sport and SE versions.

You can also opt for 3.0 litre V6 power, with strong performance and impressive fuel economy in Sport or SE guise. The SE is equipped with standard six-speed automatic transmission, with a smooth-changing five-speed manual for the Sport.

The magnificent S-TYPE 4.2 litre SE or Sport is powered by a normally aspirated V8 engine with six-speed automatic transmission as standard equipment.

The flagship S-TYPE R is the ultimate expression of high-performance sports saloon technology. Its impeccable performance comes from a 400 bhp 4.2 litre supercharged V8 engine combined with six-speed ZF automatic transmission.

Whatever your choice, the S-TYPE will reward you with a heady mix of style, spirit and intoxicating performance.

Four hundred supercharged horsepower delivered from a 4.2 litre V8 powerhouse. A six-speed automatic transmission for seamless, rapid-fire changes. The power to launch you from standstill to 60 mph in just 5.3 seconds.

This is where art meshes with leading-edge technology. Dynamic Stability Control (DSC) for safe, spirited handling. Jaguar's Adaptive Restraint Technology System (A.R.T.S.), with its array of ultrasonic sensors for world-class occupant protection. Even the option of pedals that adjust at the touch of a button.

The supercharged S-TYPE R is the dynamic flagship of the S-TYPE line-up. It's joined by S-TYPE SE and Sport models. The Sport can be powered by a normally aspirated 4.2 litre V8 or 3.0 litre or 2.5 litre V6. The SE is powered by a choice of either 2.5, 3.0 litre V6 or 4.2 litre V8 engines. In addition, a 2.5 litre V6 model provides greater accessibility to the S-TYPE range.

The S-TYPE also was the first car in its class to offer a state-of-the-art, ZF six-speed automatic transmission. Six speeds instead of five, optimising power delivery for on-demand performance and silky-smooth refinement.

The S-TYPE's stiff body, rigid chassis and effective suspension achieve class-leading ride comfort and handling agility, providing informative steering feel to the driver's hands.

This is the Jaguar S-TYPE. A car that blends relevant technology with bold, dramatic style, towering performance with unrivalled refinement.









S-TYPE V6

1900 cc, 16 valves, 200 km/h, 0-100 in 8.5 sec.

1900 cc, 16 valves, 200 km/h, 0-100 in 8.5 sec.

1900 cc, 16 valves, 200 km/h, 0-100 in 8.5 sec.

1900 cc, 16 valves, 200 km/h, 0-100 in 8.5 sec.

1900 cc, 16 valves, 200 km/h, 0-100 in 8.5 sec.

1900 cc, 16 valves, 200 km/h, 0-100 in 8.5 sec.

1900 cc, 16 valves, 200 km/h, 0-100 in 8.5 sec.

1900 cc, 16 valves, 200 km/h, 0-100 in 8.5 sec.

1900 cc, 16 valves, 200 km/h, 0-100 in 8.5 sec.

1900 cc, 16 valves, 200 km/h, 0-100 in 8.5 sec.

5.0 litre 24 valve V8

S-TYPE SE

3 TYPE 2.5 LITRE V4 SE







S-TYPE SPORT

Il motore S-Type Sport è un 2.0 litri benzina, 16 valvole, 163 CV, che garantisce una spinta eccezionale e una velocità massima di 200 km/h. La trasmissione a 6 rapporti è a innescamento manuale. Il cambio automatico a 4 rapporti è opzionale. Il motore S-Type Sport è anche dotato di un sistema di iniezione elettronico a iniezione diretta, che garantisce una combustione completa e una spinta eccezionale. Il motore S-Type Sport è anche dotato di un sistema di iniezione elettronico a iniezione diretta, che garantisce una combustione completa e una spinta eccezionale. Il motore S-Type Sport è anche dotato di un sistema di iniezione elettronico a iniezione diretta, che garantisce una combustione completa e una spinta eccezionale.

S-TYPE 2.0 LITRE 16V SPORT

S-TYPE R

The R's scorching performance is matched only by its handling. Exterior upgrades include standard alloy wheels, multi-spoke racing grille with LED daytime running lights, and rear spoiler. Xenon headlights and driver-side mirror with integrated turn signals are also available.

For more information on the S-Type R, visit www.bmwusa.com. Or call 1-800-368-2262. The S-Type R is a BMW of North America, LLC model. ©2007 BMW of North America, LLC. All rights reserved. BMW, the BMW roundel logo, and the BMW name are registered trademarks of BMW Group Germany. All other trademarks are the property of their respective owners.

S-TYPE R 4.2 LITRE  SUPERCHARGED



S-TYPE SE

Sanctuary leather interior with leather-upholstered driver's, slatted leather upholstered and the rear passenger seats, digital clock, dual-optic speed transducer and optional handbrake, making other applications.



S-TYPE V6

Spid Classic leather series including powered 6-way driver's seat, 4-way passenger seat, leatherette, full leather steering wheel, 6-speaker CD audio system and optional 6-speed automatic transmission.







A high-angle, close-up photograph of the front interior of a Dodge S-Type Sport. The image shows the driver's side, including the leather-upholstered front seat with perforated stitching, the door panel with a silver handle, and the center console. The leather is a light tan color. The background is slightly blurred, showing the rest of the car's interior and the rearview mirror.

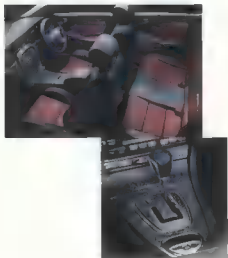
S-TYPE SPORT

Dodge Sport themed interior, featuring perforated leather, steering wheel, seats with powered eight-way driver (with optional memory pack) and six-way passenger adjustment and optional six-speed automatic transmission.

S-TYPE R

Two-tone leather-trimmed interior features air conditioning, leather-trimmed 10-way memory driver and 16-way passenger seats, 8-gear shift knob, and optional navigation system.





PERFORMANCE, ENGINEERING AND TECHNOLOGY

There's always something new. The spirit of innovation is always present in the engineering and technology of the company. The company is always looking for new ways to improve its products and services. The company is always looking for new ways to improve its products and services. The company is always looking for new ways to improve its products and services.

There's always something new. The spirit of innovation is always present in the engineering and technology of the company. The company is always looking for new ways to improve its products and services. The company is always looking for new ways to improve its products and services. The company is always looking for new ways to improve its products and services.

There's always something new. The spirit of innovation is always present in the engineering and technology of the company. The company is always looking for new ways to improve its products and services. The company is always looking for new ways to improve its products and services. The company is always looking for new ways to improve its products and services.

© 2000 THE WALKER GROUP, INC.







R Performance is the ultimate expression of Jaguar core values: performance and passion. Born out of Jaguar's racing heritage, from legendary victories at Le Mans to the ultra-competitive world of Jaguar Racing and Formula One, Jaguar's R models are pure driving machines.

The S-TYPE is one of the select family of Jaguar R models. With its 400 bhp supercharged V8, race-inspired brakes, CATS suspension and bold, dramatic look, the S-TYPE R meets all criteria for membership of the elite group of cars that includes the XJR and the XKR.

You can heighten the sense of excitement with R-inspired performance accessories, available for all S-TYPE models. Visit the R Performance brochure for details.





Jaguar road cars have benefited from our racing programmes for decades. Back in the early 1950s, the C-type pioneered disc brakes in racing, leading to the XK150 becoming the first volume production car in the world with disc brakes on all four wheels as standard.

Even today there are still similarities in behaviour and driving characteristics between our road cars and the Jaguar F1 racing cars. Both provide a precise, linear response that's inherently faithful to the driver's input. And in addition to a chassis that is fundamentally safe and stable, our road cars also benefit from highly effective and carefully tuned, so that even without a racing driver's experience and expertise, you can be confident of coping with the unexpected.

MIKE CROSS

Chief Engineer, Vehicle Integrity





Kingpin Angle (KPA) is measured around the horizontal axis of the wheel. It usually represents the angle between the steering axis and the vertical line. KPA is a critical factor in determining the vehicle's handling characteristics, such as steering response, stability, and cornering. The ideal KPA value varies depending on the vehicle's design and intended use. For example, a sports car might have a higher KPA for better cornering, while a truck might have a lower KPA for better stability. KPA is typically measured using a specialized tool called a KPA gauge, which is attached to the steering knuckle and the wheel hub. The gauge measures the angle between the steering axis and the vertical line, providing a precise reading of the KPA value.





PERFORMANCE ENGINES

Class-leading power output.

Dynamic performance.

We'd have retirement.

Not three of the quadbikes at

Legion. Line-up at midnight for

the 5.0 V8.

**ZF SIX-SPEED AUTOMATIC
TRANSMISSION**

Standard on R, 4.2 litre V8s and SE models. The six-speed automatic provides seamless shifting and more responsive kickdown. It takes the 5.1 litre 3.0 litre V6 SE to 61 mph in 7.5 seconds - virtually the same as the manual version.



FIVE-SPEED MANUAL TRANSMISSION

Available on all cars, the five-speed manual transmission gives you the control and fun of a stick shift. It's a proven, reliable transmission that's been used for decades.

ELECTRONIC PARK BRAKE (EPB)

The new Electronic Park Brake (EPB) is a new way to park your car. It's a simple, easy-to-use system that lets you park your car with the push of a button. The EPB is a new way to park your car. It's a simple, easy-to-use system that lets you park your car with the push of a button.

COMPUTER ACTIVE TECHNOLOGY SUSPENSION (CATS)

The new Computer Active Technology Suspension (CATS) is a new way to ride your car. It's a simple, easy-to-use system that lets you ride your car with the push of a button. The CATS is a new way to ride your car. It's a simple, easy-to-use system that lets you ride your car with the push of a button.

DYNAMIC STABILITY CONTROL

The new Dynamic Stability Control (DSC) is a new way to drive your car. It's a simple, easy-to-use system that lets you drive your car with the push of a button. The DSC is a new way to drive your car. It's a simple, easy-to-use system that lets you drive your car with the push of a button.

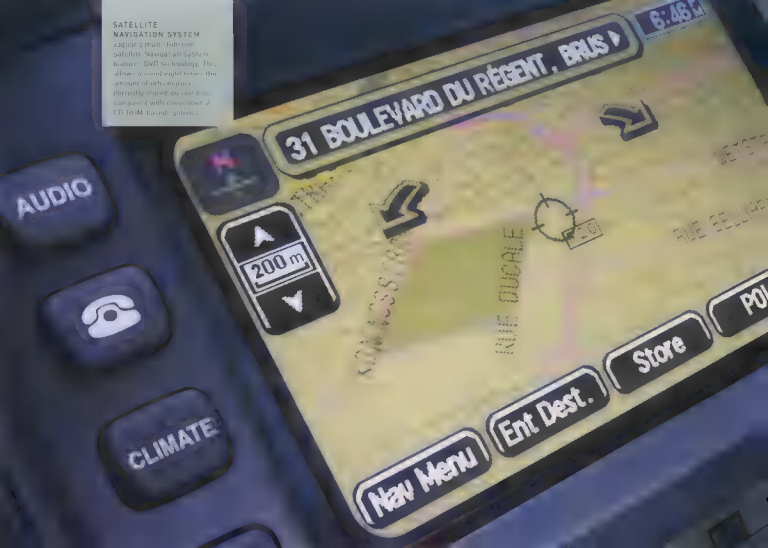
ANTI-LOCK BRAKES

The new Anti-Lock Brakes (ABS) are a new way to stop your car. It's a simple, easy-to-use system that lets you stop your car with the push of a button. The ABS is a new way to stop your car. It's a simple, easy-to-use system that lets you stop your car with the push of a button.



**SATELLITE
NAVIGATION SYSTEM**

Jaguar's multi-function satellite Navigation System features DVD technology. This allows a road eight times the amount of information typically stored on a CD disc, compared with conventional CD ROM based systems.





JAGUAR MULTIMEDIA DISPLAY SYSTEM

...
...
...
...
...
...

JAGUAR VDCI

...
...
...

SAFETY FROM THE INSIDE OUT

Safety is non-negotiable. Innovative, state-of-the-art technology, effective design, and no-compromise engineering has resulted in a car that represents a major advance in passive vehicle safety for medium-sized premium sedans. And you won't find it is technology in options list; safety comes standard on the S.TYPE. Like Jaguar's leading-edge Adaptive Restrain Technology (ARTS) Front and rear side curtain airbags. Anti-lock brakes with emergency brake assist. Energy absorbent seating surfaces. All standard.

CRUMPLE ZONES

The S.TYPE's unitary structure is laser-engineered and computer-aided to help protect occupants in rollover accidents. Crumple zones, crumple zones and roll-over protection help absorb the force of an impact before it reaches the occupants.

DRIVER AND PASSENGER AIRBAG

The S.TYPE's driver and passenger airbags in the driver and passenger seats. Working in conjunction with ARTS, the bags deploy at either normal or reduced levels of inflation, depending on the severity of the collision. They will not deploy the passenger side airbag if it senses the seat is empty.



SEAT BELT PRE-TENSIONERS AND ISOFIX SEATS

In a frontal impact, airbags and seat belts might become necessary. The S-TYPE comes with "electronic" seat belt pre-tensioners that retract in milliseconds, helping to hold the occupant's body in place. For optimum child safety, ISOFIX is an innovative anchorage system that allows a child safety seat to be secured directly in the car, in the rear, without the use of additional seat belts.

ENERGY-ABSORBENT SEATING SYSTEM

The energy-absorbent seating system is designed to absorb the impact of a crash. The front seats are made of a special material that can absorb a lot of energy. The rear seats are also made of a special material that can absorb a lot of energy. The energy-absorbent seating system is designed to absorb the impact of a crash. The front seats are made of a special material that can absorb a lot of energy. The rear seats are also made of a special material that can absorb a lot of energy.

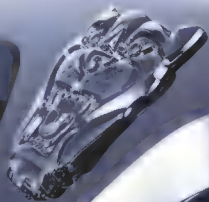
ADAPTIVE RESTRAINT TECHNOLOGY SYSTEM (A.R.T.S.)

The Adaptive Restraint Technology System (A.R.T.S.) is a safety system that adapts the car's restraint system to the driver's weight, height, and seating position. The A.R.T.S. system uses a sensor to detect the driver's weight and height. The sensor then sends a signal to the A.R.T.S. system, which then adjusts the car's restraint system accordingly. The A.R.T.S. system also adjusts the car's restraint system based on the driver's seating position. The A.R.T.S. system is designed to provide the best possible protection for the driver and passengers in the event of a crash.

SIDE AND CURTAIN AIRBAGS

Full protection is provided in the event of a side impact. The S-TYPE has side curtain airbags located in the front and rear door sills. In a side-impact, the curtain airbags deploy downwards, giving vital head protection to front and rear passengers. At the same time, a seat-mounted thorax airbag inflates, protecting the side of the rib cage of the front passenger.

JAGUAR VALUES





Experiencing rising Mexican import tariffs and labor shortages, Weitzmann's plant in Mexico and plant in Mexico City had to find ways to reduce labor costs and improve productivity. The plant in Mexico City had to find ways to reduce labor costs and improve productivity. The plant in Mexico City had to find ways to reduce labor costs and improve productivity.



The plant in Mexico City had to find ways to reduce labor costs and improve productivity. The plant in Mexico City had to find ways to reduce labor costs and improve productivity. The plant in Mexico City had to find ways to reduce labor costs and improve productivity.

The plant in Mexico City had to find ways to reduce labor costs and improve productivity. The plant in Mexico City had to find ways to reduce labor costs and improve productivity. The plant in Mexico City had to find ways to reduce labor costs and improve productivity.



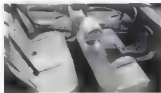
The plant in Mexico City had to find ways to reduce labor costs and improve productivity. The plant in Mexico City had to find ways to reduce labor costs and improve productivity. The plant in Mexico City had to find ways to reduce labor costs and improve productivity.



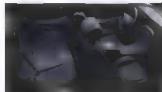
The plant in Mexico City had to find ways to reduce labor costs and improve productivity. The plant in Mexico City had to find ways to reduce labor costs and improve productivity. The plant in Mexico City had to find ways to reduce labor costs and improve productivity.

The plant in Mexico City had to find ways to reduce labor costs and improve productivity. The plant in Mexico City had to find ways to reduce labor costs and improve productivity. The plant in Mexico City had to find ways to reduce labor costs and improve productivity.

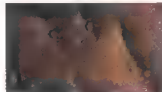
S-TYPE ■ MONOTONE INTERIOR THEME



5-TYPE ■ TWO TONE INTERIOR THEME



WOOD VENEER OPTIONS



STANDARD AND OPTIONAL WHEELS

Standard 16" alloy wheels
Standard 16" alloy wheels

Standard 16" alloy wheels
Standard 16" alloy wheels
Standard 16" alloy wheels

Standard 16" alloy wheels
Standard 16" alloy wheels
Standard 16" alloy wheels



Standard 16" alloy wheels
Standard 16" alloy wheels
Standard 16" alloy wheels

Standard 16" alloy wheels
Standard 16" alloy wheels
Standard 16" alloy wheels

Standard 16" alloy wheels
Standard 16" alloy wheels
Standard 16" alloy wheels

of a Honda Civic. The
newest Civic is a 1.8-liter
four-cylinder.

It's a 1.8-liter four-cylinder.
It's a 1.8-liter four-cylinder.



It's a 1.8-liter four-cylinder.
It's a 1.8-liter four-cylinder.
It's a 1.8-liter four-cylinder.

Technically, the lighter weight of
cast alloy wheels enables the suspension
to react more quickly and effectively.
And there's a visual benefit too. Wheels
do eventually affect overall appearance.
With a design, then, relationship with the
body gives the driver that extra
dimension emphasizing structural stability
and making it look glued to the road.

That's particularly apparent with big
diameter wheels. And especially wheels
with spokes. Spokes appear to boost the
weight put to the road and the design's
and convergence of these lines create
dynamism. It's a blend of the mechanical
and the artistic, a sense of being unified
with equipment.

IAN CALLUM • Director, Jaguar Design



STANDARD AND OPTIONAL FEATURES

CD AUTOCHANGER

By providing 10 interchangeable CD discs, the autochanger provides three hours of light entertainment. It also has an emergency stop. This feature is available on the 1.6 and 1.8 litre engines. A full power stereo and the radio are included.

SINGLE-SLOT CD PLAYER

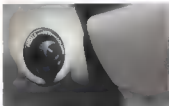
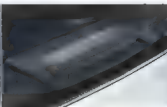
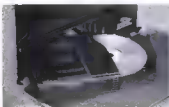
With a programmable, 10-disc autochanger, the single-slot CD player provides three hours of light entertainment. It also has an emergency stop. This feature is available on the 1.6 and 1.8 litre engines. A full power stereo and the radio are included.

JAGUAR ALPINE PREMIUM SOUND SYSTEM

The Alpine Premium Sound System features a 6-disc autochanger, 10 speakers, a subwoofer and a power amplifier. It also has an emergency stop. This feature is available on the 1.6 and 1.8 litre engines. A full power stereo and the radio are included.

SINGLE-SLOT MINI DISC PLAYER

The single-slot Mini Disc player provides three hours of light entertainment. It also has an emergency stop. This feature is available on the 1.6 and 1.8 litre engines. A full power stereo and the radio are included.



ADJUSTABLE PEDALS

Adjust the engine, gear and clutch pedals to suit your driving style. The optional power windows are also available. The engine, gear and clutch pedals are also available. The engine, gear and clutch pedals are also available. The engine, gear and clutch pedals are also available.

IN CAR FIXED PHONE

The in-car fixed phone is a hands-free mobile phone. It is available as an optional extra. The in-car fixed phone is a hands-free mobile phone. It is available as an optional extra. The in-car fixed phone is a hands-free mobile phone. It is available as an optional extra.

POWER SEATS

The power seats are available as an optional extra. They provide a comfortable and supportive seating position. The power seats are available as an optional extra. They provide a comfortable and supportive seating position. The power seats are available as an optional extra.

POWER SUNROOF

The power sunroof is available as an optional extra. It provides a bright and airy interior. The power sunroof is available as an optional extra. It provides a bright and airy interior. The power sunroof is available as an optional extra.

REAR IN-SCREEN ANTENNA

Seamlessly integrated into the rearview mirror, the 16.1-inch touchscreen infotainment display displays video from the rear camera, so you can see what's behind you.

REAR SUNBLIND

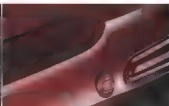
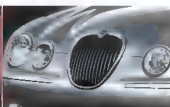
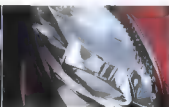
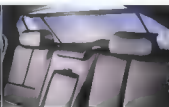
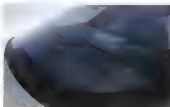
With the second row folded down, the second row sunblind can be lowered to provide privacy and shade for passengers in the second row.

XENON HEADLIGHTS

Available as an option, xenon headlights provide superior visibility in low-light conditions. They also have a longer life span than standard halogen headlights.

AUTOMATIC HEADLIGHT ACTIVATION

A sensor can detect if the front of the vehicle is in a dark environment, and automatically turn on the headlights.



ELECTROCHROMIC DOOR MIRRORS

11.6-inch electrochromic, heated door mirrors. Includes optional side-view mirror, plus the standard automatic side-view mirror. Includes side-view mirror, plus the standard automatic side-view mirror. Includes side-view mirror, plus the standard automatic side-view mirror.

Available as an option.

REAR PARKING ASSIST

Optional rear parking assist system. Includes rear parking assist system. Includes rear parking assist system. Includes rear parking assist system.

RAIN-SENSING WIPERS

Optional rain-sensing wipers. Includes rain-sensing wipers. Includes rain-sensing wipers. Includes rain-sensing wipers.

DRIVE AWAY DOOR LOCKING

Optional drive away door locking. Includes drive away door locking. Includes drive away door locking. Includes drive away door locking.

SPECIFICATIONS AND DIMENSIONS

ENGINE	2.5 V6 2.5 V6 Sport	2.5 V6 SE	3.0 V6 SE	3.0 V6 Sport	4.2 V8 SE 4.2 V8 Sport	S-TYPE R (4.2 V8 S/C)
Cylinders/valves per cylinder	6/4	6/4	6/4	6/4	8/4	8/4
Bore/stroke - mm	81.65/79.5	81.65/79.5	81.0/79.5	81.0/79.5	84.0/90.0	86.0/90.0
Capacity - cc	2497	2497	2967	2967	4196	4196
Maximum power - DIN bhp (kW)	201 (150)	201 (150)	240 (179)	240 (179)	300 (224)	405 (298)
EEC PS (kW) @ rev/min	201 (147) @ 4800	201 (147) @ 4800	234 (172) @ 4800	238 (175) @ 4800	298 (218) @ 6000	396 (291) @ 4100
Maximum torque - DIN lb ft (Nm)	184 (250)	184 (250)	221 (300)	221 (300)	310 (420)	401 (553)
EEC lb ft (Nm) @ rev/min	188 (255) @ 4000	181 (245) @ 4000	216 (293) @ 4100	216 (293) @ 4100	303 (413) @ 4100	399 (541) @ 3800
Compression ratio - 1	10.5	10.5	10.5	10.5	13.1	9.3
Transmission	5-speed manual	6-speed automatic	6-speed automatic	5-speed manual	5-speed automatic	6-speed automatic

PERFORMANCE (MANUFACTURER'S ESTIMATES)

Acceleration 0-60 mph (0-100 km/h) - sec	8.2 (8.6)	9.4 (9.9)	7.5 (7.9)	7.1 (7.6)	6.7 (6.5)	5.3 (5.6)
Top speed - mph (km/h)	142 (229)	150 (240)	165 (233)	166 (235)	155 (250) Limited	155 (250) Limited

FUEL CONSUMPTION (1)

Urban - mpg (l/100km)	21.2 (17.3)	19.4 (14.5)	18.5 (15.2)	18.2 (16.2)	16.5 (17.1)	15.3 (18.5)
Extra urban - mpg (l/100km)	38.7 (47.3)	35.8 (27.5)	35.1 (28.0)	34.7 (27.7)	34.2 (28.2)	32.5 (32.2)
Combined - mpg (l/100km)	29.6 (29.5)	27.4 (18.3)	26.4 (18.0)	27.4 (18.0)	26.5 (18.5)	27.5 (12.5)
Carbon dioxide emissions - g/km	229	249	259	269	274	314
Tank capacity - gals (Ltr) approx. (incl. 5 Ltr reserve)	15.0 (69.3)	15.0 (69.3)	15.0 (69.3)	15.0 (69.3)	15.0 (69.3)	15.0 (69.3)

WEIGHT (2)

Kerb weight - lb (kg)	3572 (1620)	3647 (1653)	3771 (1710)	3689 (1673)	3626 (1653)	3969 (1800)
Gross vehicle weight - lb (kg)	4690 (2127)	4754 (2156)	4809 (2188)	4736 (2148)	4839 (2195)	4938 (2240)
Permitted roof load - lb (kg)	220 (100)	220 (100)	220 (100)	220 (100)	220 (100)	220 (100)
Permitted trailer load, unbraked - lb (kg) (3)	1654 (750)	1654 (750)	1654 (750)	1654 (750)	1654 (750)	1654 (750)
Permitted trailer load, braked - lb (kg) (3)	3528 (1600)	4079 (1850)	4079 (1850)	4079 (1850)	4079 (1850)	4079 (1850)
Permitted towbar download - lb (kg)	165 (75)	165 (75)	165 (75)	165 (75)	165 (75)	165 (75)

WHEELS/TYRES

Wheel type	Helios Alloy 6.5" x 16"	Spartan Alloy 7.5" x 16"	Spartan Alloy 7.5" x 16"	Heracles Alloy 7.5" x 17"	Kronos Alloy 7.5" x 17"	Zeus Alloy 8.0" x 18" Front
	Heracles Alloy 7.5" x 17"				Heracles Alloy 7.5" x 17"	9.5" x 18" Rear
Tyre size	205/60 ZR16	205/60 ZR16	225/55 ZR16	225/50 ZR17	225/50 ZR17	245/45 ZR18 F
	225/55 ZR17				225/50 ZR17	225/55 ZR18 R
Turning circle - ft, in (m)	37' 8" (11.48)	37' 8" (11.48)	37' 8" (11.48)	37' 8" (11.48)	37' 8" (11.48)	37' 8" (11.48)
Boot volume - cu ft (litres) - VDA	14.1 (400)	14.1 (400)	14.1 (400)	14.1 (400)	14.1 (400)	14.1 (400)
Boot volume with rear seats folded - cu ft (litres) - VDA	28.6 (810)	28.6 (810)	28.6 (810)	28.6 (810)	28.6 (810)	N/A

1. Figures are based on a 75% urban/25% extra urban/50% combined cycle driving pattern.
2. Figures are based on a 75% urban/25% extra urban/50% combined cycle driving pattern.
3. Figures are based on a 75% urban/25% extra urban/50% combined cycle driving pattern.



STANDARD AND OPTIONAL EQUIPMENT

		2.5 V6	2.5 V6 Sport	2.5 V6 SE	3.0 V6 Sport	3.0 V6 SE	4.2 V8 Sport	4.2 V8 SE	5-TYPE R (4.2 V8 S/C)
TRANSMISSION/SUSPENSION/BRAKES									
Brakes	<ul style="list-style-type: none"> Electronic Park Brake Brembo, four-piston with silver painted callipers and Jaguar R logo 								
Overdrive control	<ul style="list-style-type: none"> Dynalene Stable Control Tractor control 								
Suspension	<ul style="list-style-type: none"> Standard Sports (only available with 17 or 18" wheels) CAIS (Computer Active Technology Suspension, only available with 17 or 18" wheels) M suspension including CAIS 								
Transmission	<ul style="list-style-type: none"> 5-speed manual 6-speed electronic automatic 								
EXTERIOR FEATURES									
Chrome finish grille surround, boot plinth, bumper blades and window surrounds									
Body coloured grille surround, boot plinth, bumper blades and black window surrounds									
Body coloured rear spoiler									
Exterior mirrors	<ul style="list-style-type: none"> Power-adjustable, heated Electrochromic, interior and door mirrors Power fold back 								
Front fog lights									
Garage door opener									
Headlights	<ul style="list-style-type: none"> Automatic headlights Headlight powerwash Manual headlight levelling Xenon headlights with automatic headlight levelling (1) 								
Heated front windscreen									
Heated rear window with layer									
Metallic paint									
Rain-sensing windscreen wiper	Only available with electrochromic mirrors								
Rear parking assist									
Sunroof	<ul style="list-style-type: none"> Glass, electric with tilt and slide 								
Wheel	<ul style="list-style-type: none"> Cast alloy 6.5" x 16" Jifangs Cast alloy 7.5" x 16" Spind Cast alloy 7.5" x 16" Aramis Cast alloy 7.5" x 17" Xenon Cast alloy 7.5" x 17" Sport Cast alloy 7.5" x 17" Heracles Cast alloy 8" x 18" 29.5" x 8" Zeus Two-piece alloy 8" x 18" Indragopalis (interior finish) Two-piece alloy 8" x 18" Monarch (silver finish) Spoke space saver Spoke full size (16" or 17") 								

STANDARD AND OPTIONAL EQUIPMENT

		2.5 V6	2.5 V6 Sport	2.5 V6 SE	3.0 V6 Sport	3.0 V6 SE	4.2 V8 Sport	4.2 V8 SE	S-TYPE R (4.2 V8 5/C)
INTERIOR THEME, TRIM AND SEATING									
Classic interior theme	Colour keyed upper fascia, door top rolls and carpets. Bronze stained birds eye maple veneer fascia and door trims	■		■		■		■	■
Sport interior theme	Warm Charcoal upper fascia and door top rolls. Red carpets, grey stained birds eye maple veneer fascia and door trims with Sport seats				■		■		
R interior theme	Warm Charcoal upper fascia and door top rolls. Red carpets, grey stained birds eye maple veneer fascia and door trims with R seats and gearknob								
Steering wheels	<ul style="list-style-type: none"> Leather Speed leather 5R leather R leather Wood/leather 	■	■	■	■	■	■	■	■
Gearknobs	<ul style="list-style-type: none"> Leather (manual) Sport leather with chrome sides (automatic) R leather with chrome sides Wooden (automatic) 	■			■		■		■
Seats, front	Electrically adjustable, driver and front passenger	■	■	■	■	■	■	■	■
Climate seats, both	Heated	■							
Classic seats, leather	<ul style="list-style-type: none"> 4-way driver, 6-way passenger 10-way driver, 8-way passenger 8-way driver, 6-way passenger 4-way driver with memory pack, 8-way passenger 10-way driver with memory pack, 8-way passenger 16-way driver with memory pack, 16-way passenger 			■				■	
Sport seats, leather (perforated)	<ul style="list-style-type: none"> 4-way driver, 6-way passenger 10-way driver with memory pack, 8-way passenger 		■		■				
R seats, leather (two tone)	<ul style="list-style-type: none"> 16-way driver with memory pack, 16-way passenger 						■		■
R seats, leather (monotone)	<ul style="list-style-type: none"> 16-way driver with memory pack, 16-way passenger 								
Seat, leather		■							
Seats, rear	<ul style="list-style-type: none"> Head restraints - 3 and Isofix seat brackets Fold down seat (split 60/40) 	■	■	■	■	■	■	■	■
INTERIOR FEATURES									
Air conditioning	Automatic climate control with air filtration, dual zone for driver and passenger temperature control	■		■	■	■	■	■	■
Cruise control	With steering wheel audio and telephone controls			■					
Cupholders	<ul style="list-style-type: none"> Front (with powerports) Rear (only available with leather seats) Front (with powerports) and rear (only available with leather seats) 			■		■	■	■	■
Foot pedals	Electrically adjustable	■							
Footwell mats	Target, front and rear								■
Power-assisted steering	Speed-sensitive, variable-ratio	■	■	■	■	■	■	■	■
Ski hatch with bag (only available with leather seats)		■							■
Steering column	Electrically adjustable with tilt away	■	■	■	■	■	■	■	■
Sunblind	Rose, electric								
Switches	Illuminated with safety switch, driver and passenger	■	■	■	■	■	■	■	■
Trip Computer	With tank function	■	■	■	■	■	■	■	■

		2.5 V6	2.5 V6 Sport	2.5 V6 SE	3.0 V6 Sport	3.0 V6 SE	4.2 V8 Sport	4.2 V8 SE	S-TYPE R [4.2 V8 S/C]
AUDIO/COMMUNICATIONS									
Audio equipment	- Jaguar sound system with 4 horn-cone speakers, single slot CD/radio, EON 825, PTV, TA and automatic volume control	■	■	■	■	■	■	■	■
	- Radio/cassette (in lieu of single slot CD/radio)	△	△	△	△	△	△	△	△
	- Mini Disc/radio (in lieu of single slot CD/radio)	□	□	□	□	□	□	□	□
	- CD autochanger (4-disc capacity)	□	□	□	□	□	□	□	□
	- Jaguar Alpine Premium sound system with 16 speakers, DSP and power amplifier [2]	□	□	□	□	□	□	□	□
JaguarVoice	- Voice control of audio, automatic climate control and, if fitted, telephone and navigation [3]	□	□	□	□	□	□	□	□
JaguarVoice/cruise control	- Voice control of audio, automatic climate control and, if fitted, telephone and navigation (with cruise control) [3]	□	□	□	□	□	□	□	□
Navigation system [4]	- Touch-screen	□	□	□	□	□	□	□	□
Navigation/TV system [4]	- Touch-screen and TV tuner	□	□	□	□	□	□	□	□
Telephone system	- Web integrated GSM	□	□	□	□	□	□	□	□

SAFETY

Adaptive Restraint Technology System (A.R.T.S.)		■	■	■	■	■	■	■	■
Airbags	- Front and side for driver and front passenger	■	■	■	■	■	■	■	■
	- Side curtain	■	■	■	■	■	■	■	■
Anti-lock braking system		■	■	■	■	■	■	■	■
Emergency brake assist		■	■	■	■	■	■	■	■
Energy Absorbent Seating System		■	■	■	■	■	■	■	■
First aid kit		□	□	□	□	□	□	□	□
High-level stop light		■	■	■	■	■	■	■	■
Seat belt pre-tensioners	- Front and rear	■	■	■	■	■	■	■	■
Warning triangle		□	□	□	□	□	□	□	□

SECURITY

Security	- Security system with central locking, ultrasonic intrusion-sensing, radio frequency remote control and engine immobiliser (Thatcham 1 approved)	■	■	■	■	■	■	■	■
----------	---	---	---	---	---	---	---	---	---

OPTIONAL PACKS

V6 S Pack	- Classic leather seats 8-way/6-way and 8-speed electronic automatic transmission	□	□	□	□	□	□	□	□
Memory pack	- Memory for driver's seat, (with entry/exit function), door mirrors, steering column and adjustable foot pedals (if fitted)	□	□	■	□	■	■	■	■
Winter pack	- Headlight powerwash, heated front windscreen, heated front seats	□	□	□	□	□	□	□	□

■ Standard □ Optional at extra cost △ Optional at no extra cost □ Not available □□ Linked option

[1] Only available with headlights/powerscreen.

[2] If radio/cassette head unit is specified. Jaguar Alpine Premium sound system also requires CD autochanger.

[3] Available in English, French, German, Spanish or Italian.

[4] Country mapping DVD covers.

Available in Belgium, Denmark, Finland, France, Germany, Ireland, Italy, Luxembourg, Netherlands, Norway, Portugal, Spain, Sweden, Switzerland, Switzerland and United Kingdom.

* Limited coverage.

SE models are known as Executive in certain parts of the world.

Specifications vary from country to country. Please contact your dealer for details.

THE JAGUAR OWNERSHIP EXPERIENCE



JAGUAR FINANCIAL SERVICES

Jaguar Financial Services offer a range of finance and insurance plans tailored to provide maximum choice and flexibility. You'll be as impressed with the finance as you are with the car. Your Jaguar dealer will match your personal or business requirements to the most appropriate finance plan, provide you with quotations and process your application.

COMPANY CAR OPT OUT

Because of the changes in company car Benefit in Kind taxation introduced in April 2002, many company fleet operators and company car drivers are considering their alternatives. Jaguar Financial Services and Jaguar Cars Limited have jointly developed a wide range of finance and insurance plans for business customers and private individuals who may have chosen to opt out of their company car scheme. A combination of Jaguar Privilege PCP, Jaguar Service Contract and Jaguar Insurance provides an excellent package for drivers who have chosen to opt out. Please contact your Jaguar dealer for further information.

WWW.JAGUAR.COM

Your personal Jaguar journey may begin with a visit to www.jaguar.com. The website includes helpful tools such as a dealer locator, specifications and price lists, the latest information on all the Jaguar models, information on clubs, and a fascinating look into the passion and legacy that inspire the Jaguar name.

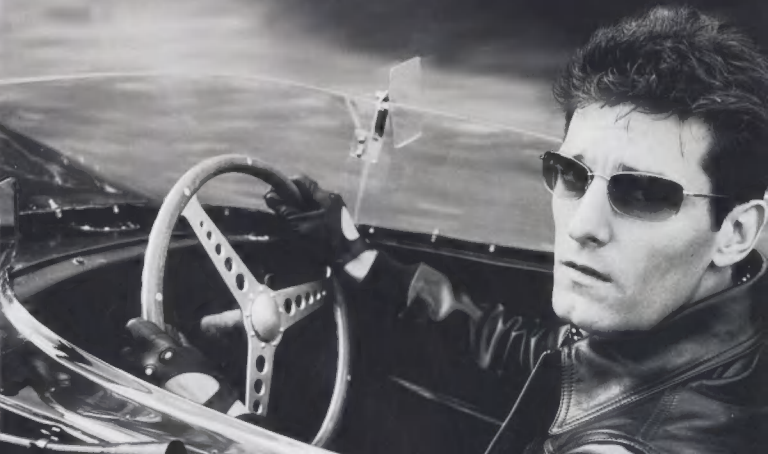
JAGUAR MAGAZINE

In this unique owners publication you will read about exotic and exciting drives to take with your Jaguar, stories of other Jaguar owners and their experiences with their cars, highlights on Jaguar's activity in the exciting world of Formula One racing, and the finer things that go hand in hand with a luxury lifestyle.

OWNERSHIP

Your Jaguar comes with Total Care which incorporates 3 year unlimited mileage Vehicle Warranty, together with a 3 year unlimited mileage Paint Surface Warranty and a 3 year unlimited mileage Corrosion (Perforation) Warranty. Also included in Total Care is the support of 24 hour Jaguar Assistance Incident Management, including onward travel and hotel accommodation in the UK. Jaguar European Emergency Assistance affords you similar cover should you be travelling in Continental Europe. Furthermore, optional extended warranties are available allowing you to extend the 3 year unlimited mileage warranty cover for a further 12, 24 or 36 months (years 4, 5 and 6).

Mark Webber, Jaguar Racing's Formula 1 driver in a 1956 D-type





IMPORTANT NOTICE

Jaguar Cars Limited is constantly seeking ways to improve the specification, design and production of its vehicles and when we take place continuously. Whilst every effort is made to produce up to date literature, this brochure should not be regarded as an infallible guide to current specifications, nor does it constitute an offer for the sale of any particular vehicle. (Dealers and dealers are not agents of Jaguar Cars Limited and have no authority to bind Jaguar Cars Limited by any express or implied undertaking or representation).

ENVIRONMENTAL NOTICE

Jaguar Cars Limited has a vision of being amongst the world's leading companies in demonstrating progress towards sustainability. We aim to do this by contributing to a better quality of life for communities affected by the design, manufacture, use and disposal of Jaguar cars. We believe that playing a supportive role in the communities in which we operate is a privilege, not an obligation. Corporate citizenship goes to the very heart of our company.

It is Jaguar's policy to continually improve its high environmental standards in all areas of business activity.

This literature is produced using virgin wood fibre from speedily renewable, forest earnings and sustainable forests. Pulp used are Elemental Chlorine free.

Jaguar Cars Limited
Enniscorthy Drive
Cwmwystwyne, RDP, England

WWW.JAGUAR.COM

Printed in England



JCM13/07/06