

WOLSELEY

CARS

EIGHT

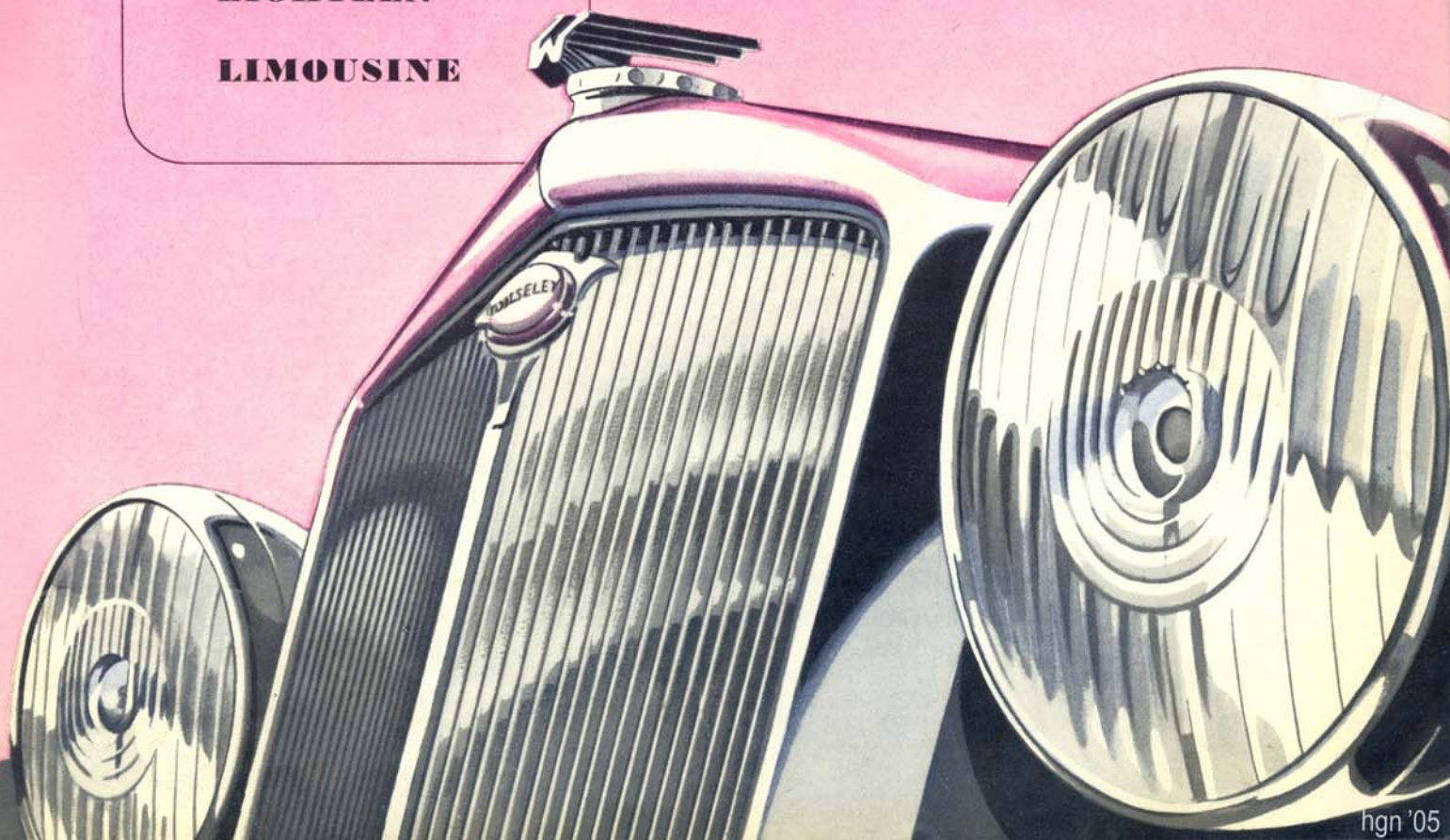
TEN

TWELVE

FOURTEEN

EIGHTEEN

LIMOUSINE



Wolseley offer Reliability Comfort and Performance with Economy

This folder does not pretend to be a descriptive catalogue, but rather an abridged list that will enable the prospective purchaser to decide which model of the Wolseley range may best suit his purpose. There is a Wolseley, from the sprightly aristocratic "Eight" to the dignified and luxurious Limousine, to meet the needs of every class of motorist. Each model of the range has its individual characteristics, but they have this in common—all bear the stamp of quality which for half a century has been the hall-mark of Wolseley productions.

Wolseleys are known to perform well, but performance is not obtained at the expense of economy. The efficient overhead-valve engine, in all models, is designed to produce a high brake horse-power. This is obtained by a careful layout of the induction system, S.U. carburation, and a thermostatically controlled cooling system. To reduce friction and obtain longer engine life, Wolseley engines are now fitted with a new form of wire-wound piston. Quick and silent gear changes are ensured with the 4-speed gearbox having synchromesh on 2nd, 3rd and top, and in conjunction with the lively engine, quick getaway is assured.

Lockheed hydraulic braking provides a quick, straight-line halt. Due to their large braking area, the smooth and powerful brakes operate with the lightest of pedal pressures.

The steering on all models is light and positive, and operates on the Bishop cam principle. On all models, with the exception of the "Eight," the steering column is adjustable for height and rake, and in conjunction with

sliding seats an ideal seating position may be found to suit drivers of different statures.

Maximum motoring comfort can only be secured by a happy combination of two vital factors—suspension and seating design.

Wolseley "phased" suspension is designed to provide a smooth ride, in which the car is quite free from pitching. It is based upon semi-elliptic springs, in which the periodicity of front and rear springs is at a predetermined variance. They cannot swing in unison, and consequently the suspension is flexible yet firm.

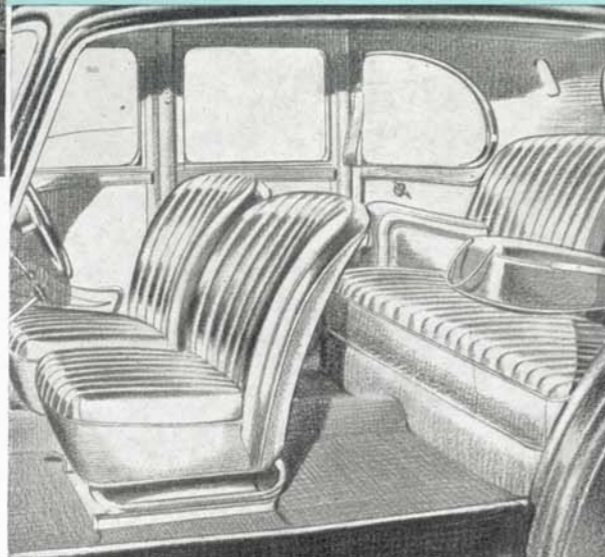
Coupled with "phased" suspension, the seating is anatomically correct and conforms to the human figure. The cushions and squabs are soft and resilient, and long journeys may be undertaken without undue fatigue or any feeling of car tiredness.

Wolseley cars are noted for their high-class finish. The most modern equipment is installed in the Wolseley plant, and no pains are spared to ensure that Wolseley cars have a lasting quality. Wings, bonnets, wheels and other chassis and body parts are now treated with an effective rustproof coating that is covered and sealed by successive layers of cellulose or synthetic enamel. Rust problems are therefore reduced to a minimum.

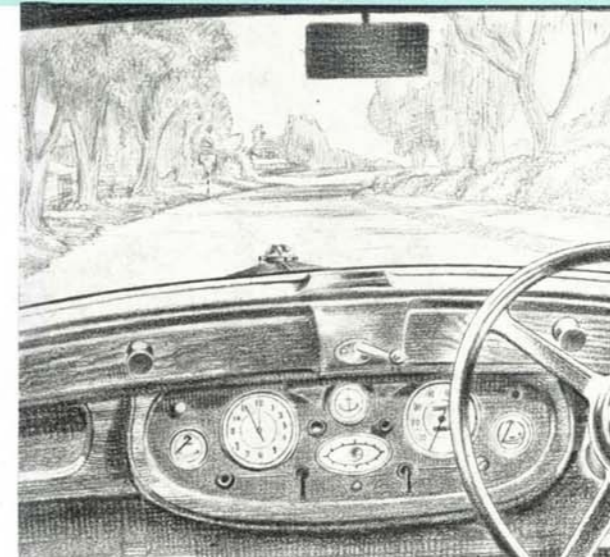
High-class motoring will be yours when you possess a Wolseley.



Above The typical radiator and front view of Wolseley cars has a dignified and pleasing appearance. Lighting on the Limousine, 18/85 and 14/60 is by the safety night-pass system, and on other models the usual dip and switch mechanism is provided, both of which are in full conformity with the Ministry of Transport regulations.



Left High quality coachwork, with anatomically correct construction of the seating, makes riding both in the rear and front seats a comfortable and pleasant experience. Wolseley "phased" suspension eliminates the all too familiar see-saw motion; this and the general roominess of all models makes travelling in a Wolseley a luxury.



Right A wide and unobstructed range of vision is obtainable by the driver and passengers in Wolseley cars. The single handle in the centre of the frieze (on all models except the "Ten") operates the windscreen, which remains fixed over a wide range of opening. The dashboard instruments, with large dials, are arranged at a convenient angle for easy reading, and are softly illuminated by diffused lights.



Above A puncture on the road presents little inconvenience to Wolseley owners. The larger models incorporate the built-in Jackall system. The car can be jacked up very simply by operating a small lever from inside the car, and the spare wheel, conveniently situated in a separate compartment at the rear, can be lifted out and changed quickly and easily with the minimum of effort on the part of the driver.

buy wisely—buy WOLSELEY

THE WOLSELEY RANGE

4 & 6 Cylinder
Cars of
exceptional
value



THE WOLSELEY 18/85 SALOON
6 cyl. - 5 passenger

Inbuilt quality
providing comfort
&
reliability

features



THE WOLSELEY "EIGHT" SALOON
4 cyl. - 4 passenger

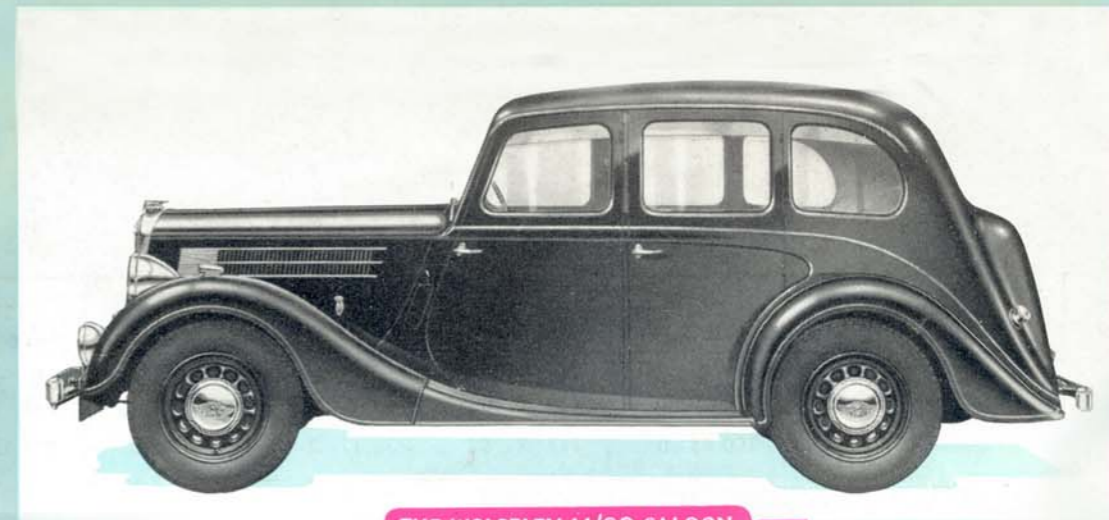


THE WOLSELEY 12/48 SALOON
4 cyl. - 5 passenger

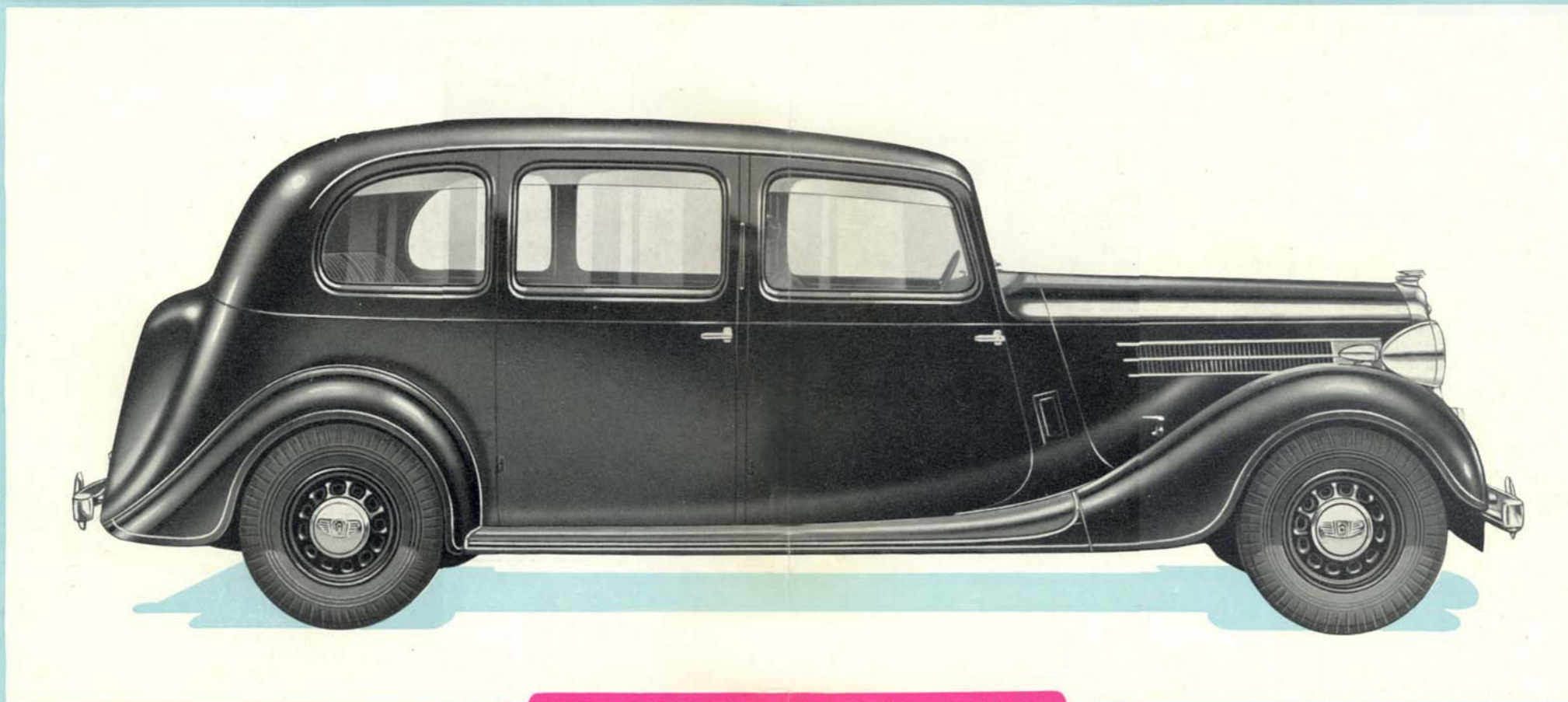


THE WOLSELEY "TEN" SALOON
4 cyl. - 4 passenger

- The equipment is lavish on all models.
- ★ Triplex toughened glass all round.
 - ★ A large luggage compartment.
 - ★ Facia boards and interior woodwork of polished walnut.
 - ★ Rubber-backed pile carpet.
 - ★ Two ashtrays.
 - ★ Dual silent windscreen wipers.
 - ★ Over-centre rear blind control.
 - ★ Self-cancelling Trafficators.
 - ★ Chromium-plated bumpers front and rear.
 - ★ Interior roof-light.
 - ★ Air cleaner and intake silencer.
 - ★ Dry single-plate Borg & Beck clutch with light pedal action.
 - ★ Low-pressure Dunlop tyres.
 - ★ Wide-opening windscreen.
 - ★ External oil filter.
- In the larger models, 12/48, 14/60, 18/85 and Limousine, there is a host of additional items, such as :-
- ★ Hydraulic jacks (Bevelift jack on the "Ten").
 - ★ Separate spare wheel compartment.
 - ★ Built-in rear number-plate, which incorporates stop-light and reversing light (also on the "Ten").
 - ★ Fog-lamp.
 - ★ Pass-light system (on 14/60, 18/85 and Limousine).
 - ★ Ventilating louvres to all door-windows (also on the "Ten").
 - ★ Arm slings each side of rear seat.
 - ★ Centre folding arm-rest to rear seat.
 - ★ Twin interior roof-lights (on 18/85 and Limousine).
- Full information concerning each individual Wolseley model is given in the main catalogue. Your Wolseley Dealer will be pleased to supply you with a copy.



THE WOLSELEY 14/60 SALOON
6 cyl. - 5 passenger



THE WOLSELEY 25 H.P. LIMOUSINE
6 cyl. - 7 passenger

Production of this model is strictly limited

buy wisely - buy **WOLSELEY**

DETAIL	"EIGHT" SALOON	"TEN" SALOON	12/48 SALOON	14/60 SALOON	18/85 SALOON	LIMOUSINE
PRICE	£ s. d. 360 0 0	£ s. d. 420 0 0	£ s. d. 490 0 0	£ s. d. 535 0 0	£ s. d. 590 0 0	£ s. d. 1650 0 0
PURCHASE TAX..	100 15 0	117 8 4	136 17 2	149 7 2	164 12 9	918 3 4
TOTAL	£460 15 0	£537 8 4	£626 17 2	£684 7 2	£754 12 9	£2568 3 4
ENGINE DATA	Annual Tax.. .. £10 H.P. (R.A.C. rating) 8.06 Cubic capacity (c.c.) 918 No. of cylinders .. 4 Valves Pistons Compression ratio .. 7.3 : 1 Carburetter. Make and type .. Single S.U. downdraught Mixture control .. Manual	£12 9.99 1,140 4 6.8 : 1 Single S.U. horizontal Manual	£16 11,978 1,547 4 6.6 : 1 Single S.U. downdraught Manual	£19 14,069 1,818 6 6.6 : 1 Twin S.U. downdraught Manual	£24 17.96 2,321 6 6.5 : 1 Twin S.U. downdraught Manual (electrically operated)	£35 25.01 3,485 6 6 : 1 Twin S.U. downdraught Manual (electrically operated)
Fuel feed Lubrication	All models fuel feed by S.U. electric pump All models full pressure with external filter					
CHASSIS DETAILS	All Borg & Beck single dry plate, flexible centre All four-speed boxes, synchromesh on second, third and top All three-quarter floating, spiral bevel pinion Clutch Gearbox Rear axle Reduction ratio .. 5.285 Frame Channel steel boxed members Springing (.....All "phased" suspension—semi-elliptic—hydraulic dampers.....) Steering All Bishop cam, column adjustable for height and rake on all models except the "Eight" Brakes (.....Lockheed hydraulic on all models, operating on all four wheels.....) Jacking system .. Mechanical Bevelift Jackall hydraulic Jackall hydraulic Jackall hydraulic					
ELECTRICAL	Voltage 6 Battery capacity .. 75 a.h. Dynamo Lights	12 50 a.h.	12 50 a.h.	12 50 a.h.	12 50 a.h.	12 60 a.h.
OVERALL DIMENSIONS	Length 12' 1" Height 5' 0" Width 4' 8" Wheelbase 7' 5" Track (rear) .. 3' 10 ¹ / ₄ " Track (front) .. 3' 8 ⁵ / ₈ "	12' 3" 5' 1 ¹ / ₄ " 4' 9" 7' 6" 4' 0" 3' 10"	13' 7" 5' 6" 5' 7" 8' 2" 4' 8" 4' 6"	14' 4" 5' 6" 5' 7" 8' 8 ¹ / ₂ " 4' 8" 4' 6"	14' 4" 5' 6" 5' 7" 8' 8 ¹ / ₂ " 4' 8 ¹ / ₂ " 4' 6 ³ / ₄ "	17' 8" 6' 0" 6' 0" 11' 9" 5' 1" 4' 9"

Wolseley Motors Limited reserve the right to amend specification and prices from time to time as may be necessary without notice.

Terms of business, conditions of sale and guarantee are those printed in full in the main catalogue.

HIRE-PURCHASE

All new Wolseley models can now be acquired on very advantageous "Out of Income" terms through our own Company—Nuffield Acceptances Limited.

Each transaction, therefore, is kept quite confidential, as no outside party intervenes.

Full details can be obtained from any Wolseley Distributor or Dealer, or direct from Nuffield Acceptances Limited, Nuffield House, Piccadilly, London, W.1.

WOLSELEY MOTORS LTD., WARD END, BIRMINGHAM, 8