

1992 MODELS. EDITION NUMBER 2

VAUXHALL
SENATOR



VAUXHALL

In some respects, the Senator is a car of many contrasts. High performance with controlled exhaust emissions. Maximum driver control with minimum effort. Huge interior comfort with little disturbance from the outside world. But when it comes to craftsmanship, attention to detail and advanced technology, there is no such contradiction. Senator has simply the finest, the closest and the most.





CONTENTS

4

First class travel

6

Fingertip control

8

Senator 2.6i

10

Interior luxury

12

Senator 3.0i

14

*Comfort and
convenience*

16

Senator CD

18

*Feature
innovation*

20

*Total harmony
from
drawing-board
to road*

24

*Dealer fit options
and audio*

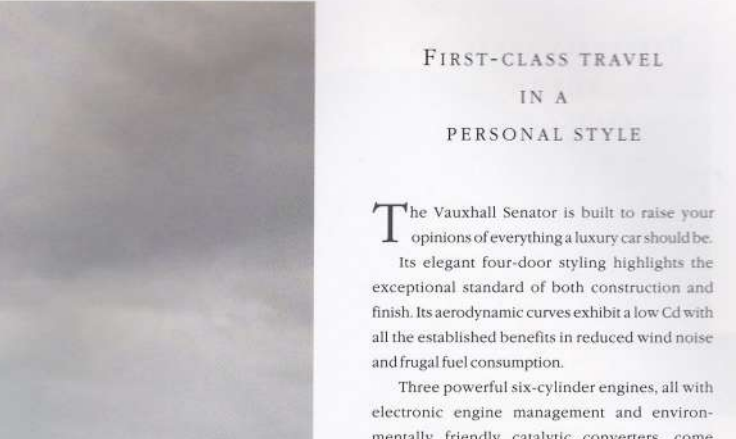
26

Specifications

30

Customer care





FIRST-CLASS TRAVEL
IN A
PERSONAL STYLE

The Vauxhall Senator is built to raise your opinions of everything a luxury car should be.

Its elegant four-door styling highlights the exceptional standard of both construction and finish. Its aerodynamic curves exhibit a low Cd with all the established benefits in reduced wind noise and frugal fuel consumption.

Three powerful six-cylinder engines, all with electronic engine management and environmentally friendly catalytic converters, come together with advanced automatic transmissions and speed-sensitive power-assisted steering to make driving a Senator an effortless pleasure.

Both chassis and suspension are finely tuned to incorporate Vauxhall's unique Advanced Chassis Technology (ACT), for a smooth, supple ride, with taut, confident handling, while the inherent safety of electronic anti-lock brakes (ABS) adds even greater peace of mind.

Inside, the Senator philosophy has created the space for comfortable, relaxed travel. Supple leather or soft wool cloth trim, beautiful wood veneer and a vast array of valuable features will envelop you and your passengers in a world of executive style.

But Senator doesn't forsake technology for tradition. Its ergonomic fascia combines advanced electronics with a classical elegance of line to keep you in complete control at all times.

With a winning combination of traditional craftsmanship and attention to detail, contemporary design and the very latest in automotive technology, 1992 Senator brings a new meaning to first class travel with a total driving environment that has to be experienced to be believed.

PERFECTLY ARRANGED
FOR THE
DISCERNING TRAVELLER

The mark of a successful facia is the ease and speed with which the driver can monitor a car's progress and make adjustments where necessary.

In this respect, Senator is more than admirable. The driver's cockpit area was designed after extensive ergonomic research. Every control is

within easy reach; every instrument is informative, well illuminated and easy to read, whether it's the

analogue display that's now standard on all models or the high-tech LCD panel (illustrated left) that can be specified at no extra cost on the Senator CD.

To keep you in touch with the condition of the car's essential functions, Senator has an electronic check control panel which performs a six-point check sequence on engine start-up, informing the driver the instant anything needs attention.

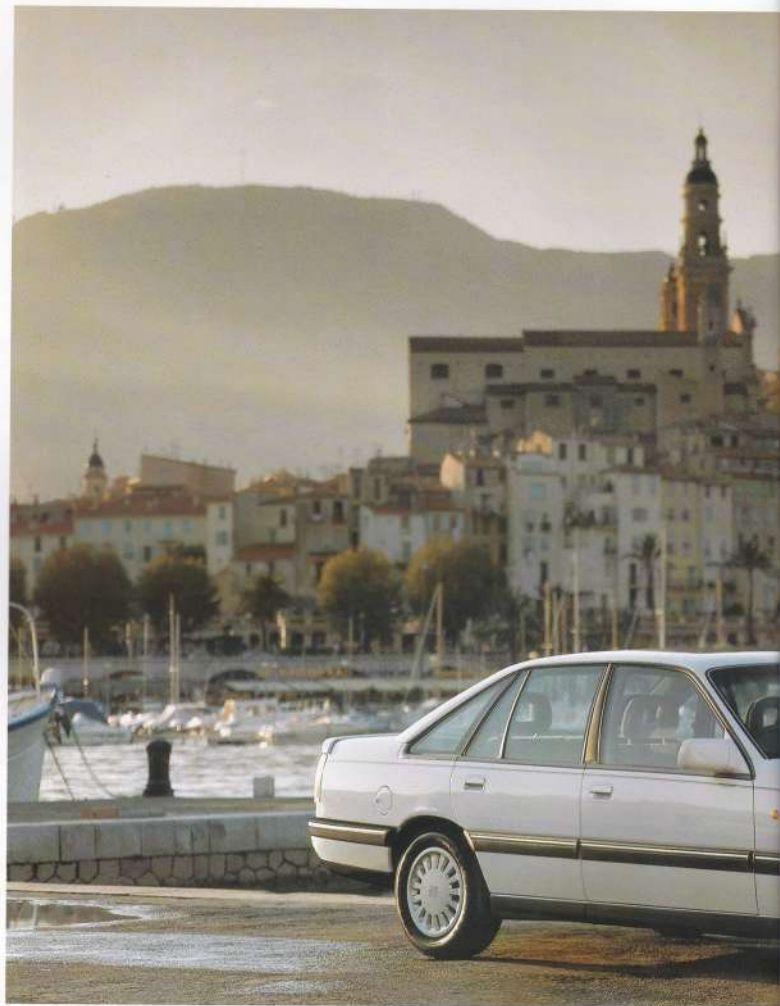
Driver controls are grouped into two areas. Those most vital and often used (such as indicators and wiper controls), are situated literally at your fingertips on the two steering column stalks, while less used switches are situated on the facia and centre console.

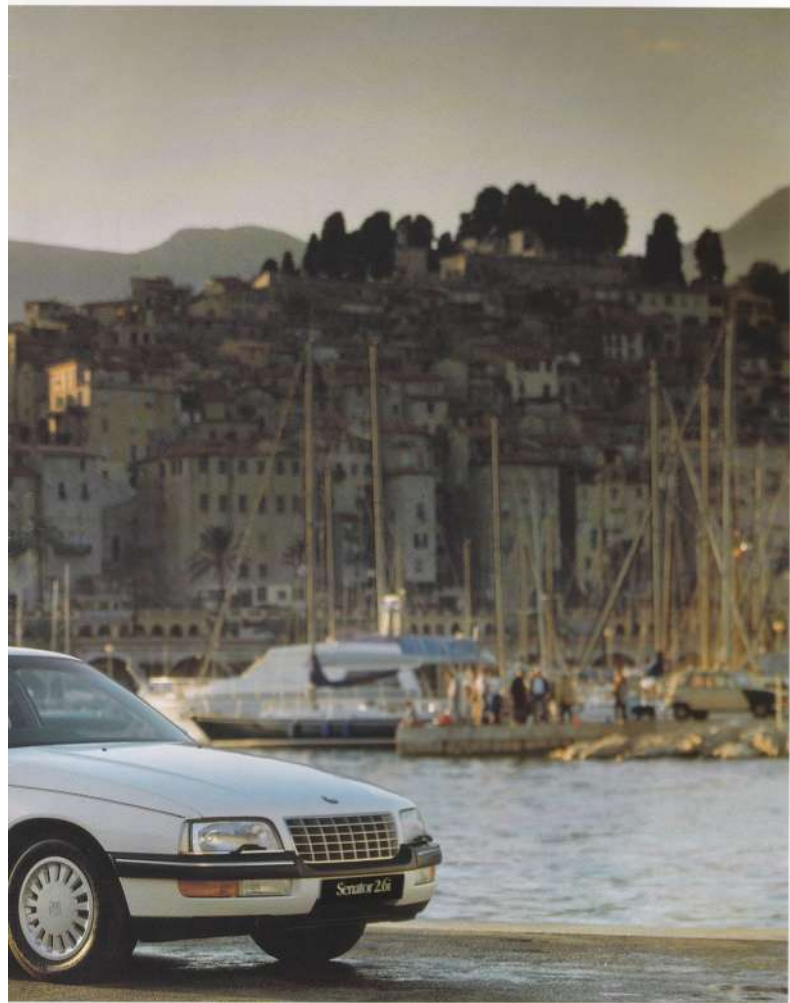
Two new audio systems also adorn Senator's centre console. Both feature a Radio Data System receiver and Dolby equipped cassette player while CD models also get a compact disc player with boot-mounted 10-disc autochanger.

Even the audio controls, however, require the minimum of stretching or effort. Which, after all, is exactly what Senator is all about.









ACHIEVEMENT BRINGS ITS OWN REWARDS

AN AMBIENCE
THAT CREATES PEACE
OF MIND

Take your seat in a Vauxhall Senator and you will be left in no doubt as to the true meaning of top-of-the-range interior luxury and convenience.

Natural trim materials, traditional craftsmanship and a comprehensive feature specification have come together to create a cabin environment that fulfils all the modern day criteria for first class travel.

You'll find soft Kendal wool trim, colour-keyed cut pile velour carpets, beautifully grained wood veneer inserts for facia and door trim, and soft-feel fabric for headlining and front screen pillars in every Senator 2.6i and 3.0i, while the top-of-the-range CD swaps wool trim for the added refinement of supple leather.

A comfortable driver is a safe driver. So no expense has been spared to create a driving environment that can be fully adjusted.

And because Vauxhall believe that a car's occupants should be spared the noise and distractions of the outside world, Senator is not only packed with sound insulation, but designed to create less noise in the first place.

GM's superior skills in the wind tunnel have led to a car that slips through the air more quietly than the average, and our acknowledged engineering prowess has created engines that are altogether smoother and quieter at all levels of operation.

So whether the journey is a short trip or a long haul, Senator will provide that all-important sanctuary from the hustle and bustle of modern day motoring.

Illustrated right: Senator CD interior









PERFECTION PURSUED FOR PLEASURES UNTOLD



Above: Senator 2.6i Interior.

Right: All Senators feature a split-folding rear seat with fold-down centre armrest.





MILES AHEAD IN COMFORT

If total passenger comfort and convenience is the aim of a luxury saloon then Senator achieves this with room to spare.

Access to both front and rear seats is effortless thanks to large, wide-opening doors. Senator's spacious cabin provides ample room at head, shoulder and waist, there's more than enough kneeroom and the footwells are deep and wide.

Senator seats are more than just relaxing, they positively surround you with comfort. And just as both front seats offer high degrees of adjustability, so the rear is split-folding, allowing for versatile access to the capacious boot.

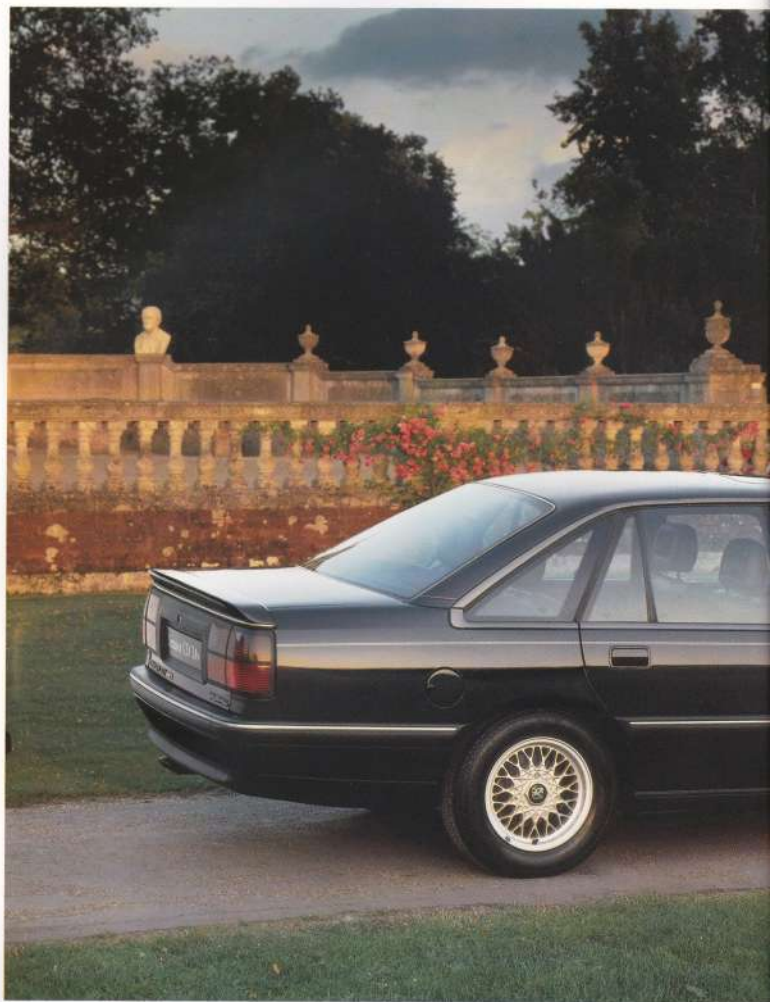
For the safety and convenience of rear seat passengers, Senator provides two height-adjustable seat belts, a static centre lap belt and adjustable head restraints. And to keep them in the lap of luxury there are separate heating and ventilation outlets in the rear.

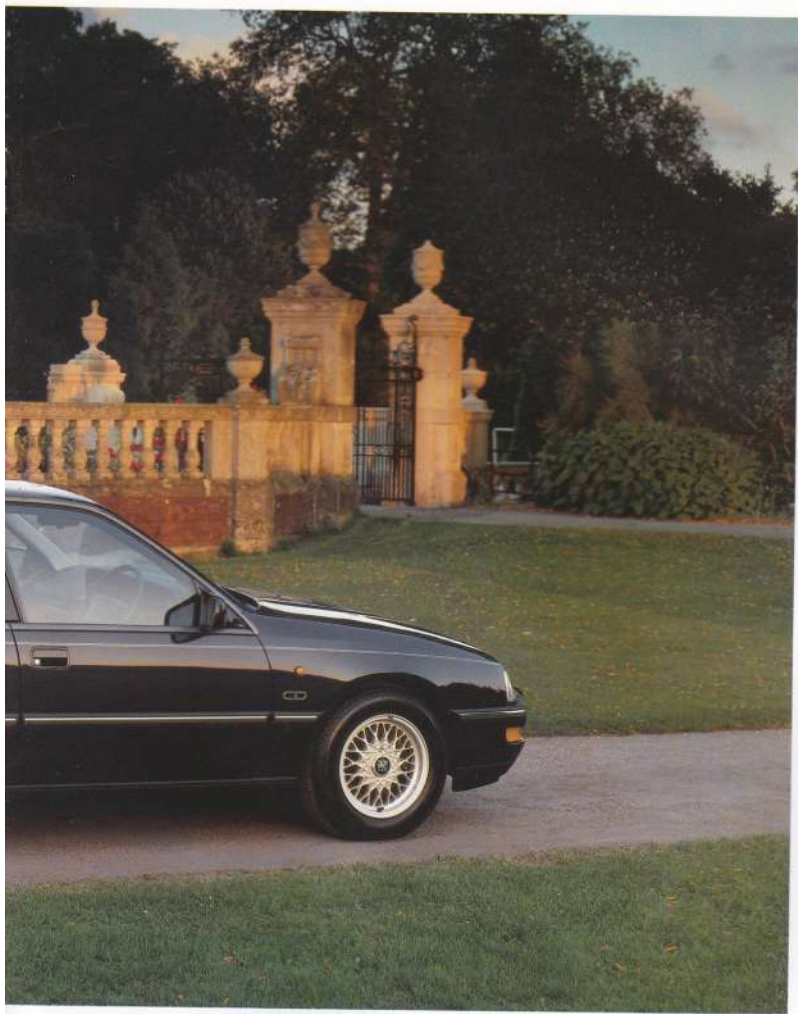
Senator's heating and ventilation system is engineered to supply a layered mix of warm and cool air throughout the car, without the faintest hint of a draught.

Naturally, the system can be adjusted to provide individual air temperatures to driver and front passenger. And those desired temperatures are maintained regardless of variations outside the car. The CD models also feature full air conditioning, even including a cold air supply to the glovebox.

When it comes to reaching your destination with the minimum fuss and the utmost style, Senator offers a complete package of luxury and sophistication that is both rare and distinctive.







THE DEDICATION TO EXCELLENCE DESERVES APPRECIATION

INNOVATIVE DESIGN IS THE RULE

While Senator's overall interior environment is designed to make even the longest journey a totally comfortable and enjoyable experience, it's the extra details, the practical Vauxhall innovations, that give Senator the edge in travel comfort.



Senator's front seats are fully and swiftly adjustable for rake, reach, height and lumbar support (they were developed over two years for optimum levels of comfort), the steering column is tiltable, and all four inertia reel seat belts have five-position height adjustment. Even the head restraints are adjustable for height and tilt.

Every Senator feature is functional in its own right, adding to your convenience and control without intruding on that overall impression of elegance and good taste.

Even the smallest item can add to this impression, like the miniature torch incorporated into the door/ignition key, making it so much easier to lock and unlock your car in the dark. With Vauxhall's acclaimed security deadlock central locking system, this feature is all the more valuable.

An integral part of Senator's impressive security record, the deadlock system ensures that doors cannot be opened without the correct key. So even if a window is broken, the door cannot be opened by reaching in and lifting the lock button. As a further safeguard the Senator is also equipped with a fully integrated high security electronic alarm system.

Electrically operated windows may not come as a surprise on a car of Senator's standing, but few manufacturers include a one-touch open and close facility, with rear window de-activation from the front seat, and even fewer incorporate a computer that will sense any overload and quickly reverse the

motor in the event of a passenger's fingers being trapped as the windows close. That all four windows can be closed from outside the car, simply by turning the door key, is typical of Senator convenience.



An electrically-operated sliding/tiltable glass sunroof, electric headlamp levelling, electrically adjustable and heated door mirrors and twin front fog lamps are provided as standard equipment on every Senator.

Cruise control (illustrated below), electronic ride control and electrically heated front seats on both CD models enhance the feeling of luxury and convenience even further to relieve you of the routine of many driving chores and allow you and your passengers to enjoy every journey in the Senator to the fullest extent.



Right: Illuminated vanity mirrors, height adjustable seat belts and, for rear seat passengers, separate heating and ventilation outlets. It is Vauxhall's special attention to every detail that makes the Senator interior perfect for every journey.



TOTAL HARMONY FROM DRAWING-BOARD TO ROAD

As part of the worldwide General Motors family, Vauxhall can call upon a wealth of experience and reserves of computer-aided design, research and development expertise that are unmatched in the industry.



Senator was designed and engineered using one of the most sophisticated computers in the world, the Cray Vector Supercomputer. The car's sleek curves were finely honed in some of the most advanced wind tunnels available and like every new GM car or component, it was subjected to the closest scrutiny under an exhaustive test programme in GM's vast Hydropulse Laboratory.

Months before production was due to start, a whole fleet of Senators were either hurled at concrete walls in crash tests of all types or driven for thousands of miles in a road test programme spanning 13 different proving grounds and race tracks in six countries.

Not one part earns a place on the Senator until it is more than up to the task. And not one Senator leaves the factory until we are positive that it's as well-built as we can possibly make it.



That's why Senator is the ultimate expression of Vauxhall design and technology. And that's why Senator is such a complete luxury car.

INHERENT PASSENGER SAFETY

Driver and passenger safety is a major consideration throughout Senator design and construction. Its sleek attractive bodywork, for example, is more than just aerodynamically efficient (Cd 0.30), it's designed with 'crumple zone' front and rear bodywork giving progressive deformation in the event of an accident, and extra protection to passengers in their central 'safety cell'.

Anti-burst door locks, energy absorbing steering wheel and column, 'anti-submarining' seat ramps, height adjustable seat belts and head restraints front and rear, and of course, electronic anti-lock braking (ABS) are further examples of how Senator helps protect you and your passengers.

POWERFUL ENGINES

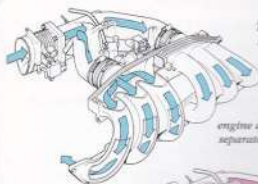
Everything you'd expect of Vauxhall's most prestigious car, Senator's choice of three engines offers a sophisticated blend of smooth power, excellent flexibility, impressive fuel economy and low maintenance requirements.

The latest 2.6i engine combines many of the previous 2.5i design features like electronic fuel injection and hydraulic tappets. Now, with advanced Motronic M1.5 engine management and a 'dual-ram' variable intake system to give 150PS, it has a superb performance potential plus a wide spread of torque, peaking at a low 3600rpm with 220Nm.

Already proving so effective on the top-of-the-range Senator 3.0i 24-valve engine, the advanced dual ram manifold with its revolving central flap allows these two engines the best of both worlds. Up to 4000rpm the flap remains closed, dividing the intake into two separate groups of three pipes (the ideal situation for optimum torque delivery) then at

higher rpm the flap opens, uniting the intake passages for better high speed breathing.

On the 3.0i 24-valve engine, dual ram helps lift maximum power to an incredible 204PS with peak torque of 270Nm achieved at 3600rpm, though there



The 'Dual Ram' intake system means that the 2.6i engine and 3.0i 24-valve unit reach peak torque extraordinarily early. Up to 4000 rpm, the engine draws air through two separate groups of three pipes (shown left).



Above 4000 rpm a central flap opens, joining all six intakes for better high-speed breathing (shown right).

is no doubt that this unit's many other race-bred design features like the multi-valve aluminium cylinder head with twin chill-cast nitrided camshafts, fully mapped ignition and twin nozzle fuel injectors all contribute an important part.

ENVIRONMENTALLY FRIENDLY

While the power and flexibility of the Senator engines is without question, performance is not the only requirement, of course. In keeping with increased concerns for our environment, the entire Senator range is now equipped with a highly sophisticated emission control system that employs twin three-way closed loop catalytic converters.

In addition, each Senator makes use of a Lambda sensor which checks the composition of the spent gases as they pass through the exhaust system and reports back to the Motronic engine management computer to adjust the timing or fuel injection system and keep emissions to a bare minimum. Like all catalyst equipped cars, Senator must only be run on unleaded fuel.

ADVANCED TRANSMISSIONS

Translating Senator's undeniable power into the smooth acceleration that befits its executive status, every model benefits from a sophisticated 4-speed, 3-mode automatic transmission as standard, though a 5-speed manual can be specified at no extra cost.

The Hydramatic transmission offers a choice of three driving modes; Economy, Sport and Winter.

ECONOMY is automatically engaged from start-up for normal driving. When SPORT is selected the transmission holds each gear slightly longer, shifting at higher revs. And WINTER helps avoid wheel-slip in icy conditions by allowing the car to pull away from standstill in third gear. Whichever mode you select, the transmission can sense coming gear shifts and communicate with the engine management system to retard the ignition timing slightly during the actual shift for even smoother gearchanges. It will also compare engine and vehicle speeds before allowing any manual downshifts that might cause over-revving.



Senator's optional 5-speed gearboxes may not appear as sophisticated in operation as the automatic, but they're just as advanced. Not only has each gear ratio been carefully chosen to allow you the utmost control of Senator's smooth engine delivery, but Senator CD 24v comes with an even tougher manual gearbox with extra-close ratios to match the engine's even more dynamic response.



REFINED SUSPENSION

Since its launch, Senator's well-engineered chassis and all-independent suspension layout has gained an excellent reputation with the motoring press for its surefooted roadholding, superbly supple ride and all-round handling superiority. This is due in no small part to Vauxhall's unique package of suspension design features collectively termed Advanced Chassis Technology (ACT).

Coupled with gas pressure MacPherson strut damper cartridges for the front and telescopic dampers with progressive rate miniblock coil springs at the rear and anti-roll bars at both ends, ACT gives Senator additional road stability

and balance, especially under braking. The greater the upsetting force, the more the suspension responds, making Senator a much safer car in every roadgoing situation.

Originally designed especially to handle the greater forces exerted by the incredibly powerful 3.0i 24-valve engine, every Senator model is now fitted with 'multi-link' rear suspension.

Retaining all the benefits associated with ACT, 'multi-link' rear suspension offers precise steering response, reduced torque steer and of course, superb handling under all conditions with no deterioration in ride, making it the state-of-the-art for comfort and safety in large, high performance saloon cars.

ANTI-LOCK BRAKING

Designed to complement Senator's ACT, the Bosch electronic anti-lock braking system (ABS-2) monitors each wheel independently to prevent them locking up and skidding when the brakes are applied, no matter how hard you push the pedal. Even under the most adverse conditions, like icy roads, ABS-2 will help keep the car controllable under emergency braking.



ELECTRONIC RIDE CONTROL

Electronic Ride Control (standard on CD, optional on other models), allows the driver to select the rate at which the suspension operates from a simple facia control.

There are three settings: 'Medium', which equates to the rate considered as normal for cars without this feature, 'Comfort', which relaxes the suspension to allow a softer, more comfortable ride, and 'Sport', which gives Senator a harder, faster response and a slightly firmer ride.

For added safety, the system is self-monitoring and fail-safe. It will not allow the 'Comfort' setting to remain in force at speeds of over 71mph and should there be any malfunction of any suspension component, or of the electronic system itself, the

computer will attempt to correct it. If the error persists, a facia warning light alerts the driver and the system reverts automatically to the 'Medium' setting, storing the error message in its memory for later retrieval by a service technician.

Winning a top award for vehicle security three times in succession is a measure of Vauxhall's commitment to providing the best possible security features. On the Senator they already include:

- ◆ Central door locking with deadlock system, which also includes the boot.
- ◆ Fuel filler flap included in central locking.
- ◆ Special side profile keys, difficult to copy and offering 2,000 different combinations.
- ◆ Steering column lock.
- ◆ Automatic closure of powered windows from outside the car by turning the key in the driver's door to 30 degrees.
- ◆ Stereo radio/cassette players feature a display panel that can be easily removed to make the unit incomplete and therefore virtually useless to a potential thief.
- ◆ Further audio security is assured, with all units having a burnt-in security code.
- ◆ Vehicle chassis number, radio serial number and code number logged by Vauxhall at factory.
- ◆ Lockable centre caps on Senator CD alloy wheels, opened only with special key.
- ◆ Security Handbook included with new car documents.

TOP SECURITY MEASURES FOR YOUR PROTECTION



Adding to free-of-charge Vauxhall security glass etching of the car's registration number, Senator security features now go even further with the sophisticated high-security car alarm fitted to every model in the Senator range.

The fully integrated alarm works in conjunction with Senator's deadlock central door locking system, monitoring signals from all doors, boot and bonnet, immobilising the car through the starter motor and sensing movement within the car through special motion sensors.

The alarm is activated by operating the deadlock when locking the driver's door and disarmed simply by unlocking the car in the normal way.

Any attempt to interfere with the car or its contents triggers the alarm's sensors and the separate horn unit blasts out intermittently for 30 seconds before it resets automatically.

Lastly, the Senator system carries protection against rocking, temperature changes within the car, wind pressure and other common 'false alarm' problems and can cater for different circumstances such as leaving children or pets temporarily in the car or unlocking the boot without affecting the alarm. The unit even conducts a self-diagnostic test at each arming, indicating any fault with a flashing LED.

THE FREEDOM TO CHOOSE



Whilst it may be foolish to presume that Senator could be improved in the way of luxury, there is no denying that accessories and dealer fit options do provide that additional element of choice.

Recognising this, Vauxhall has produced a range of additional features for this flagship model to help tailor the car exactly to owners' needs, extending its abilities to match their every requirement.

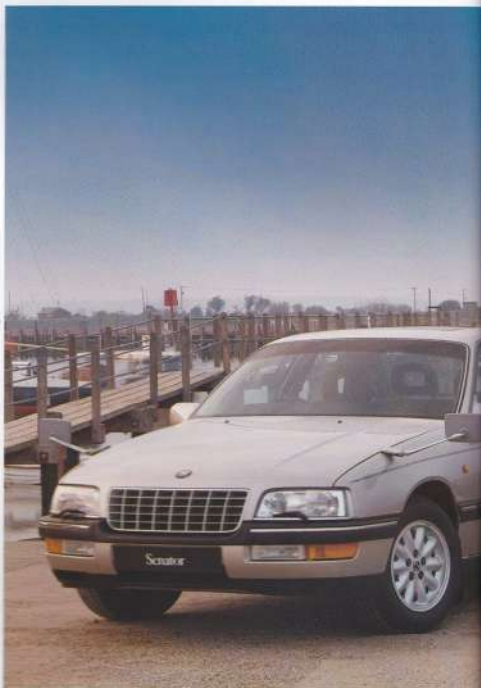
There's the practical towing attachment and mirrors, specially designed to let you exploit Senator's prodigious ability as a towcar. Then there's the modular roof carrier system, with specialised fittings to accommodate everything from small boats to bicycles and skis to sailboards.

Helping to preserve your investment by protecting your Senator inside and out are a range of mudflaps and tailored floor mats that combine good looks with hard-wearing practicality.

Large or small, you can be assured that every Senator product has been designed and manufactured to the same exacting standards as Senator itself and the 'Vauxhall Approved' label is your guarantee of quality and value.

Many Vauxhall Dealerships have a retail shop displaying a selection of Senator dealer fit options and other accessories, but for a full picture of the range ask for a Vauxhall Car Range Accessories brochure.

Senator's tailored floor mats are available in hard-wearing black rubber and luxurious colour co-ordinated velour.



Above and main picture: handsome dealer fit wheels lend Senator a stylish, sporting presence while mudflaps help keep those good looks in protecting the body from grit and road dirt.



Senator's specially-designed tow bar is tested and approved, ensuring safe, trouble-free towing - as befits a former Caravan Club Toucar of the Year.

AUDIO

Vauxhall has a long tradition of excellence in the field of car entertainment - and an enviable reputation for innovation. So in this exciting period of progress in audio technology, it should come as no surprise that Vauxhall is once again raising the stakes with a completely new range of advanced stereo systems that bring the best of the new developments to the Vauxhall customer.

Every Senator fully reflects this commitment. Its six-speaker sound system offers faithful reproduction of the spoken word as well as music of all types. The SC 804 radio/cassette player provides every imaginable feature for pure listening pleasure, while for those who choose the Senator CD, there's the crystal-clear offered by compact disc, with a 10-disc autochanger opening up the possibility of many hours of continuous musical indulgence.

Both new units are equipped to receive Radio Data System (RDS) broadcasts and offer the full range of RDS facilities (see right for details).

Security takes a step into the future too. As well as the burst-in security code, all Senator's new audio units also feature a removable display panel, that when removed leaves the unit virtually useless to any potential thief.



SC 804

This top quality unit has a mouth-watering specification including Dolby B and C as well as soft-touch controls and high power for even purest sound quality. This unit is standard on Senator 2.0i and 3.0i.

Features include:

- 4 figure security code burnt into memory chip
- Removable display for added security
- Automatic volume control
- Fader and balance controls
- Separate treble and bass controls
- Maximum output 20 watts per channel
- 6 speakers
- Microprocessor-controlled quartz tuning
- FM, MW, LW and SW reception
- Radio Data System (RDS)
- Travel Information Service
- 6 station preset buttons
- Automatic search tuning
- Tip-and-down manual tuning function
- Autostore function for FM and MW
- Soft touch cassette controls
- Autoreverse function
- Cassette programme search
- Dolby B and C noise reduction systems
- Fast forward and fast reverse wind
- Cassette standby facility
- Radio reception during fast forward and rewind



4870

As befits the Senator CD's level of luxury, the 4870 is a state-of-the-art audio system of incomparable quality and is complete with a boot-mounted compact disc autochanger that takes up to 10 discs.

Features as for SC 804 plus:

- Boot mounted Compact Disc player with 10-disc autochanger

RADIO DATA SYSTEM

Senator's new audio units incorporate the latest technology, including the full range of Radio Data System (RDS) services.

The Radio Data System (RDS) provides a range of new facilities and services designed not just to enhance listening enjoyment and convenience but actually to extend the scope of the radio's usefulness to the general listener.

In the UK, both the BBC and some independent local radio stations are broadcasting RDS signals alongside their normal programme signal. This RDS signal contains coded information that is received and decoded by a special unit in the radio.

Automatic tuning

The first advantage offered by RDS is an automatic tuning system. By locking-on to an RDS programme identification signal - for example BBC Radio 4 - rather than a specific frequency, RDS can search out the strongest source of that signal, then switch automatically to maintain the best reception. This avoids the need for constant re-tuning as you travel from area to area, and your listening pleasure remains undisturbed.

With the latest RDS technology of the Vauxhall sets, even pre-set stations not actually being listened to are continually being monitored for perfect reception if and when they are selected.

RDS also removes the uncertainty of tuning by displaying the RDS station names rather than just frequencies.

Travel Information Service

The second major advantage offered by RDS is the Travel Information Service, which aims to provide motorists with all the information they need about road conditions as they actually need it.

Pressing the TP button ensures that travel flashes from the closest BBC station are automatically broadcast - interrupting other radio programmes or even recorded music. Even with the volume control turned right down, the RDS travel flash will still be heard at a pre-determined level since it overrides the control.

When complete, the network of BBC local radio stations will cover virtually the whole of the UK, providing an invaluable service for drivers.

SPECIFICATIONS

STANDARD AND OPTIONAL FEATURES

2.6i

3.0i

CD

CD24v



SEATS

Kernal wool trim	•	•		
Leather trim			•*	•*
Open type front and rear seat head restraints	•	•	•	•
Fully reclining front seats with valances (CD models have net pockets on seat backs)	•	•	•	•
Height adjustable front seats	•	•	•	•
Front seats with two-way lumbar adjustment	•	•	•	•
Electrically heated front seats	○	○	•	•
Front seat centre armrest (leather trimmed on CD)	•	•	•	•
Split-folding rear seat back and fold-down centre armrest with load-through facility	•	•	•	•

FACIA, INSTRUMENTS AND CONTROLS

Colour-keyed facia with wood veneer inserts	•	•	•	•
Integrated centre console	•	•		
Leather trimmed centre console with wood veneer inserts			•	•
Riv counter, trip odometer, water temperature gauge, instrument panel light dimmer	•	•	•	•
Multi-function check control warning panel** and low fuel level warning light	•	•		
Liquid crystal display (LCD) instrumentation with voltmeter and oil pressure gauge			N/C	N/C
***Seven-function trip computer	○	○		•
4-spoke steering wheel (leather trimmed on CD)	•	•	•	•
Tiltable steering column	•	•	•	•
Lockable, illuminated glovebox with cloth inner surface and asymmetrically positioned lock	•	•	•	•
Quartz clock (clock integral with trip computer on CD)	•	•	•	•

HEATING AND VENTILATION

Air blend heater with 5-speed fan and illuminated controls	•	•	•	•
Automatic temperature control with variable side-to-side settings	•	•	•	•
Side window demist vents and adjustable face-level air vents	•	•	•	•
Rear passenger compartment heating ducts with adjustable ventilation nozzles	•	•	•	•
Full air conditioning, including glovebox, with push button operation	○	○		

AUDIO EQUIPMENT (see page 25 for details)

SC 804 stereo radio/stereo cassette player with removable display & 6 speakers	•	•		
4870 stereo radio/stereo cassette/compact disc (CD) player with removable display, boot mounted			•	•
10-disc autochanger & 6 speakers			•	•
Security code protection for audio equipment	•	•	•	•
Radio data system (RDS) with travel information service	•	•	•	•
Cassette storage facility in front centre armrest	•	•	•	•
Electrically operated aerial	•	•	•	•

INTERIOR LIGHTING

Interior courtesy light, with delay cut-off, operated by front and rear door switches	•	•	•	•
Adjustable map reading lights integral with courtesy light	•	•	•	•
Rear reading lights	•	•	•	•
Illuminated glove box, boot and engine compartment	•	•	•	•

ADDITIONAL INTERIOR FEATURES

5-position height adjustable inertia reel front and rear seat belts and one centre static rear lap belt	•	•	•	•
Front seat belt buckle mounted on seat frame	•	•	•	•
Soft-feel sitable front and rear anchor handles with cross hooks	•	•	•	•
Internal beanbag release, tiltable illuminated handbox, steering column lock	•	•	•	•
Extensive sound insulation	•	•	•	•
One-piece moulded headlining with soft-feel padding, soft-feel A-pillar covers	•	•	•	•
Leather covered handbrake handle/gate	•	•	•	•
Velour carpet on rear parcel shelf, velour carpeted boot with sill protection, carpeted rear seat back	•	•	•	•
Provision for load retention straps in boot. Spare wheel cover	•	•	•	•
Velour door trim panels with wood veneer inserts, carpeted front door pockets	•	•	•	•
Illuminated front and rear cigar lighters, front ashtray with fingertip control and two rear ashtrays	•	•	•	•
Fabric covered twin sunroofs, height adjustable dipping rear view mirror	•	•	•	•
Illuminated vanity mirror with cover for driver and front passenger	•	•	•	•
Colour-keyed cut-pile velour carpet	•	•	•	•
Velour covered lower instrument panel, velour carpeted boot	•	•	•	•
8-piece chrome-plated tool kit	•	•	•	•



MECHANICAL

Computer-controlled 4-speed automatic transmission with economy, sport and winter driving modes	●	●	●	●
5-speed manual gearbox	N/C	N/C	N/C	N/C
Twin 3-way closed loop ceramic monolith catalytic converters	●	●	●	●
Twin 3-way closed loop metallic monolith catalytic converters				●
Speed-sensitive power assisted steering	●	●	●	●
Electronic anti-lock braking system (ABS)	●	●	●	●
Cruise control	○	○	●	●
Limited-slip differential		○	○	●
Multi-link independent rear suspension	●	●	●	●
Electronic ride control with comfort, medium and sport suspension settings	○	○	●	●

EXTERIOR LIGHTING

Halogen headlights	●	●	●	●
Dark-style rear lights	●	●	●	●
Light-on warning buzzer	●	●	●	●
Twice reversing lights and parking lights	●	●	●	●
Twice rear fog lamps	●	●	●	●
Hazard warning lights	●	●	●	●
Side repeat indicators	●	●	●	●
Electric headlamp leveling system	●	●	●	●
Integral halogen front fog lamps	●	●	●	●
Long range halogen driving lights integral with headlights	●	●	●	●
Headlamp wash/wipe	●	●	●	●
Kerb illumination door lights and door-open warning lights	●	●	●	●

EXTERIOR STYLING

Dark grey bumpers and side protection mouldings with bright insert	●	●	●	●
Body colour front and rear under bumper valance, lower part of valance in black	●	●	●	●
Aerodynamic sill mouldings, Boot lid spoiler with chrome strip	●	●	●	●
Body colour door mirror housings and door handles	●	●	●	●
Double coachline stripe	●	●	●	●
Twin rectangular exhaust tailpipes				●

WHEELS AND TYRES

Low profile tyres	●	●	●	●
Flash wheel covers	●	●	●	●
Spoked alloy road wheels with anti-theft centre caps	○	○	●	●

ADDITIONAL EXTERIOR FEATURES

Laminated windscreen with graduated tint shadeband	●	●	●	●
Green tinted glass all round	●	●	●	●
Electrically operated windows front and rear with one-touch operation, and safety auto-reverse facility	●	●	●	●
Central locking (doors, boot, fuel flap) with security deadlock and touch-key	●	●	●	●
Ultrasonic security alarm system	●	●	●	●
Electrically operated sliding/slidable glass sunroof with interior blind	●	●	●	●
Heated rear window with automatic timed cut-off and manual override	●	●	●	●
Heated twin jet windscreen washer nozzles	●	●	●	●
Electrically adjustable and heated door mirrors	●	●	●	●
2-speed windscreen wipers plus intermittent and flick wipe. Electric screenwash	●	●	●	●
Boot padlock	●	●	●	●
Twin gas assisted bonnet struts	●	●	●	●
Two-tone horn	●	●	●	●
Two-coat metallic paint	○	○	N/C	N/C
Two-coat pearlescent paint	○	○	N/C	N/C

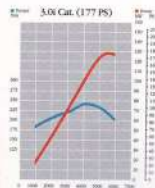
● = Standard equipment ○ = Factory fitted option at extra cost N/C = No cost factory fitted option

* Senator CD is also available at reduced cost with Kenial wool trim

** Warning panel monitors six functions: engine oil level, engine coolant level, front disc pad wear, screen wash fluid level, bulb test for head/tail lights and brake lights.

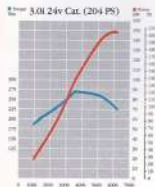
*** Functions include time, stopwatch, outside air temperature, instantaneous fuel consumption, average fuel consumption, average speed and theoretical fuel range.





ENGINES

	MAXIMUM POWER	MAXIMUM TORQUE	ENGINE FEATURES	FUEL
2.6i Cat. 2594cc	150PS (110kW) @ 5600rpm	162.3 lb.ft. (220 Nm) @ 3600rpm	6-cylinder, cam-in-head with Dual Ram intake system, hydraulic tappets and thermostatically-controlled viscous cooling fan, Bosch Motronic M1.5 engine management system with multi-point fuel injection and mapped ignition. Two ceramic monolith catalytic converters and Lambda sensor. Compression ratio 9.2:1.	Unleaded petrol only
3.0i Cat. 2969cc	177PS (130kW) @ 5800rpm	177.0 lb.ft. (240 Nm) @ 4200rpm	6-cylinder, cam-in-head with hydraulic tappets, temperature-controlled viscous cooling fan, 12 crankshaft counterbalance weights and thermostatically-controlled engine oil cooler. Bosch Motronic M1.5 engine management system with multi-point fuel injection and mapped ignition. Two ceramic monolith catalytic converters and Lambda sensor. Compression ratio 9.2:1.	Unleaded petrol only
3.0i 24v Cat. 2969cc	204PS (150kW) @ 6000rpm	199.2 lb.ft. (270 Nm) @ 3600rpm	6-cylinder, double overhead camshaft 24-valve alloy cylinder head with Dual Ram intake system, hydraulic tappets, 12 crankshaft counterbalance weights and thermostatically-controlled engine oil cooler. Bosch Motronic M1.5 engine management system with multi-point fuel injection and mapped ignition with selective knock control. Two metallic monolith catalytic converters and Lambda sensor. Compression ratio 10.0:1.	Unleaded petrol only



TRANSMISSIONS

MANUAL	CLUTCH DIAMETER	GEAR RATIOS					Rev.	FINAL DRIVE RATIOS
		1	2	3	4	5		
2.6i	5-speed	240mm	3.95:1	2.19:1	1.39:1	1.00:1	0.84:1	3.53:1
3.0i	5-speed	240mm	3.95:1	2.19:1	1.39:1	1.00:1	0.84:1	3.53:1
3.0i 24v	5-speed	240mm	3.81:1	2.11:1	1.34:1	1.00:1	0.81:1	3.40:1
AUTOMATIC								
All models	4-speed	-	2.40:1	1.48:1	1.00:1	0.72:1	-	1.92:1

Computer-controlled 4-speed automatic transmission, with three different operating modes for sport, economy and winter driving, standard on all models. 5-speed manual gearbox with hydraulic clutch optional at no cost on all models. Rear-wheel drive. Limited slip differential available as an extra cost option on 3.0i and CD models.

SUSPENSION

Front: Independent. MacPherson struts with gas pressure dampers and coil springs. Anti-roll bar. Negative scrub radius.

Rear: Independent. Multi-link suspension system with progressive rate matrixlock coil springs and gas-pressure telescopic dampers. Anti-roll bar.

Electronic ride control standard on CD (optional on 2.6i/3.0i), offers three damper settings: 'Sports', 'Medium' and 'Comfort'.

BRAKES

Dual circuit, servo assisted.

Front: 11.65in. dia. ventilated disc brakes.

Rear: 10.6in. dia. disc brakes.

Asbestos-free brake linings. Brake pad wear warning.

light. Handbrake-on and low brake fluid warning light. Plastic coated brake pipes. Electronic anti-lock braking system (ABS) standard on all models.

WHEELS

2.6i/3.0i - 6j x 15 steel wheels with flush covers.

CD - 7j x 15 spoked alloy wheels with anti-theft centre caps.*

7j x 15 spoked alloy wheels available as an extra-cost option on 2.6i/3.0i.*

*NB: The CD and 2.6i/3.0i with optional alloy wheels have a 6j x 15 steel wheel as a spare.

TYRES

All models except 3.0i 24v - 205-65 VR 15.

3.0i 24v - 205-65 VR 15.

STEERING

Servotronic speed-sensitive power assisted steering.

Recirculating ball system.

Energy absorbing steering column.

5.2 turns lock-to-lock.

Turning circle: 33.1ft. (10.1m).

ELECTRICS

12 volt negative earth system.

90 amp alternator.

55Ah maintenance-free battery (66Ah - CD).

BOOT CAPACITY (VDA method)

530 litres (18.7 cu ft.).

FUEL CAPACITY

16.5 imp. gallons (75 litres).

PERFORMANCE AND FUEL ECONOMY

Model	Transmission	PERFORMANCE		FUEL ECONOMY mpg (litres/100km)		
		Maximum Speed (mph)*	Acceleration 0-62mph (100km/h) (secs)*	Simulated Urban Driving	Constant speed	
					50mph (90km/h)	75mph (120km/h)
2.6i	5-speed manual	133	10.5	20.0 (14.1)	36.7 (7.7)	30.1 (9.4)
2.6i	4-speed automatic	130	11.3	19.5 (14.5)	36.7 (7.7)	30.1 (9.4)
3.0i (inc CD)	5-speed manual	140	9.0	18.1 (15.6)	35.8 (7.9)	29.4 (9.6)
3.0i (inc CD)	4-speed automatic	134	10.5	18.6 (15.2)	38.2 (7.4)	31.4 (9.0)
3.0i 24v	5-speed manual	149	7.8	19.8 (14.5)	37.2 (7.6)	30.7 (9.2)
3.0i 24v	4-speed automatic	146	8.8	19.5 (14.5)	38.2 (7.4)	31.4 (9.0)

*Manufacturer's figures

Fuel consumption data for Vauxhall passenger cars officially certified by the United Kingdom Government as required by the Passenger Car Consumption Order 1985.

IMPORTANT: The results given relate to the particular car tested; inevitably there are differences between individual cars of the same model. In addition, some cars may incorporate particular modifications. Driving style, road and traffic conditions, vehicle mileage and standard of maintenance may also affect fuel consumption. Therefore the results do not express or imply any guarantee of the fuel consumption attainable.

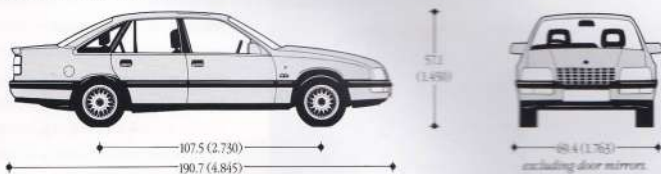


WEIGHTS

	Kerbweight (kg.)		Gross vehicle weight (kg.)		Max. roof rack loading (kg.)	Max. towing weights (kg.)			Maximum trailer noseweight load (kg.)	Rear overhang (metres)	Speed (mph) per 1000rpm manual transmission	
	Man	Auto	Man	Auto		Trailer with brakes		Trailer without brakes			4th	5th
						Man	Auto					
2.6i	1474	1494	2005	2005	100	1600	1600	720	75	1.18	19.9	23.7
3.0i	1474	1494	2005	2005	100	1700	1700	720	75	1.18	19.9	23.7
3.0i CD	1548	1568	2055	2055	100	1700	1700	720	75	1.18	19.9	23.7
3.0i 24v CD	1588	1608	2065	2065	100	1700	1700	750	75	1.18	19.9	24.6

Gross vehicle weight is the total permissible weight of the vehicle including passengers and their luggage. To determine total carrying capacity, deduct kerbweight from gross vehicle weight. The maximum towing weights are based on the ability of the car - with two occupants of 150lbs each - to restart on a 12% gradient, which is approximately 1 in 8.5 at sea level. At altitudes above 1500 metres (4922ft.), the engine output may drop with a corresponding reduction in towing capability. Any extra weight, such as luggage or additional passengers, should be deducted from the maximum towing weight. With a trailer fully loaded, maximum noseweight should not exceed the figure shown. Always fit Vauxhall officially approved towing attachments and accessories available from your Vauxhall dealer. They are the only ones approved by GM for use on Vauxhall cars.

DIMENSIONS inches (metres)



NB: overall width including door mirrors is 76.1 (1.932)

BODY

Aerodynamic drag co-efficient, Cd 0.30
All steel body with extensive anti-corrosion protection. Safety crumple zones, front and rear. Rigid passenger safety cell. Concealed windscreen wipers. Flush fitting glass all round. Flush door handles. Concealed front towing eye. Single two-way key operated locks and ignition. Burst-proof door locks. Child-proof rear door locks. Front and rear bumpers will withstand minor impacts without permanent damage.

ANTI-CORROSION PROTECTION

Anti-corrosion protection comprises: partial use of zinc-coated sheet metal, zinc phosphated bodyshell primed electrostatically (cathodic). All weld seams and joints sealed with special compound. Areas prone to stone damage on underbody coated with stone-impact primer. Anti-corrosion primers used extensively on bonnet, boot lid, doors, wings and other panels. Paint finish applied electrostatically.

PFK coating applied to wheelarches and underbody areas. Polymer reinforced anti-corrosion wax pumped into door sills and other underbody cavities. Plastic fenders and rear wheelarch liners. All Sensors carry a 6-year body panel anti-perforation warranty.

COLOURS AND TRIMS

EXTERIOR COLOURS

	MODEL AND TRIM COLOUR			
	2.6i Kendal	3.0i Kendal	CD Leather	CD Kendal

SOLID COLOURS

Glacier White	Grey	Grey	Anthracte	Grey
Kings Blue	Grey	Grey	Grey	Grey
Burgandy Red	Grey	Grey	Anthracte	Grey

2-COAT METALLIC COLOURS

Star Silver	Blue	Blue	Anthracte	Blue
Mistral Grey	Grey	Grey	Grey	Grey
Bombardier Silver	Anthracte	Anthracte	Anthracte	Anthracte
Diamond Black	Grey	Grey	Grey	Grey

2-COAT PEARLESCENT COLOURS

Emerald Green	Beige	Beige	Grey	Beige
Satin Red	Grey	Grey	Anthracte	Grey
Spectral Blue	Blue	Blue	Grey	Blue

NB: For exterior colour illustrations, please refer to the Vauxhall Car Colours brochure. In addition, all Vauxhall dealers have a comprehensive colour and trim album, with actual interior trim samples and highly accurate exterior colour illustrations, available for inspection.



VAUXHALL. NO. 1 FOR CUSTOMER CARE

Senator models are just part of the comprehensive range of Vauxhall cars – one of the widest in the UK. And one which has an enviable reputation for sound quality, affordable technology, attractive styling and 'driveability'.

There's also the added peace of mind of Vauxhall Assistance and Vauxhall Price Protection. Order a new Senator from the current available range offered and the price you are quoted is the price you pay – irrespective of any subsequent price rises between order and delivery of your new car. The only qualifications are that your order must be placed no more than three months ahead of your required delivery date and that you take delivery as soon as the car is available. Regrettably, Price Protection does not cover Government-imposed changes to Car Tax and VAT, both of which are outside of our control.

And when you buy a Senator, you can be sure that you and your car will have the

full backing of Vauxhall Motors, part of the world's largest motor manufacturer – General Motors.

Vauxhall has one of the largest franchised dealer networks in the UK with over 550 dealerships. And, as the list of services shows, your Vauxhall dealer is able to provide so much more than new and used cars. When it comes to service and parts, he is committed to providing high standards of customer care and support. He can also arrange



motor insurance, extended mechanical and breakdown protection and may also offer car hire and leasing.

The comprehensive Vauxhall new car warranty provides reassuring cover for the first 12 months of ownership with no restrictive clauses on total mileage. There's further cover too with Vauxhall's 6-year body panel anti-perforation warranty that – unlike those of some manufacturers – requires no periodic checks. Both these warranties are transferable if the car is sold within the warranty periods.

As part of the Company's total customer care concept, Vauxhall's Service & Parts operations are fully integrated into one customer-focused organisation – Vauxhall Aftersales. The aim is to provide Vauxhall owners with the best after-sales care in the motor industry.

Vauxhall has forged a strong reputation for vehicles that have minimal routine servicing requirements as a way of



VAUXHALL
Assistance

Vauxhall Assistance is the most comprehensive motoring assurance package in the UK. Designed and run in conjunction with the RAC, it is automatically extended to every new Vauxhall car for the first 12 month warranty period. Its wide-ranging list of benefits includes: full roadside rescue and recovery including at home* service, replacement loan car* and overnight accommodation* where necessary, European cover and a helpful Accident Management Service.

You'll also be entitled to many other RAC benefits including free technical advice on all aspects of motoring, holiday discounts, free legal advice and support, and full European travel insurance and booking service. Ask your dealer for full details.

**Subject to certain limitations*



VAUXHALL
Sureguard

Vauxhall Sureguard is one of the most comprehensive mechanical and breakdown insurance schemes offered by any manufacturer.

For a period of up to four years, it offers extended cover against mechanical failure as well as all the regular benefits of Vauxhall Assistance, including replacement loan car* and the Accident Management Service. Plus there's Sureguard Business Plan, specially tailored for the high mileage business driver, with its own special benefits being available for two or three years from the vehicle's registration date.

Ask your local Vauxhall dealer for full details – or pick up a Sureguard brochure.



VAUXHALL
Insurance

Are you paying more to insure your new Vauxhall than you need to?

The Vauxhall Insurance Plan (VIP) could bring you substantial savings because it is specially designed for all Vauxhall owners.

VIP provides you with a very competitive quotation from one of a specially selected panel of insurers – including Lloyds syndicates – recognising the individual circumstances of the driver and regardless of the model of vehicle, new or pre-owned.

Ask your dealer for details of the Vauxhall Insurance Plan or, alternatively, ring the VIP quotation Hotline on 0762 327979 (8.30-6.30 weekdays, 8.30-5.30 Saturdays).

lowering overall running costs for owners.

Factory-run courses ensure that dealer technicians are always abreast of the latest developments and are expert in the use of the sophisticated electronic test equipment that is such an important feature of the modern Vauxhall dealer workshop. All of which points to the advantages of entrusting servicing to the people that know best – your local Vauxhall dealer.

Naturally, genuine Vauxhall replacement parts are a key element of the service provided by dealers. It's therefore reassuring to know that Vauxhall's massive central

warehouse has an inventory of around 24 million replacement parts – all rapidly available for urgent despatch to supplement your dealer's stock. In addition to rapid availability, all parts carry a 12-month unlimited mileage warranty against defect.

And when you're abroad, you still have the service and parts backing of GM service points throughout Europe.

FOR EXTRA PEACE OF MIND

All Vauxhall dealers offer a free security window etching service with all new cars sold. Unless the customer declines, every new Vauxhall will have its windows etched with the registration number of the vehicle.

Window etching makes a vehicle far less attractive to the professional car thief and, in some circumstances, means that the vehicle's owner can be more easily traced.

As an added deterrent to potential thieves, all etched Senators carry window stickers with the message: Auto Crime Protected.

FREE CAR LOAN

But that's not all. Should the 'etched' vehicle be stolen during the first year of ownership, the owner need only 'phone Freephone Vauxhall Security (after reporting the theft to the police) and he or she is entitled to the free loan of a car, excluding fuel and insurance, for up to seven days.

Once the windows have been etched by a Vauxhall dealer, ownership details are registered on the Vauxhall Security computer.

The benefits of the scheme are renewable after the first year for a nominal fee and can be transferred to a new owner at a small additional cost.

VAUXHALL Motability

Disabled people in receipt of the DSS Mobility Allowance or the War Pensioners' Mobility Supplement receive special help from Vauxhall.

Attractive preferential prices or the advantages of low cost contract hire are available on many Nova, Astra, Cavalier and Carlton models through your local Vauxhall Motability Registered Dealer. In addition, those receiving the DSS Severe Disablement Allowance also qualify for preferential prices through our own Mobility Plan.

For full details contact your local Vauxhall dealer, whose trained Motability staff will be pleased to help you. Alternatively, ring Vauxhall Motability Helpline on 0582 696332.

VAUXHALL Master Hire Leasing

A nationwide network of selected Vauxhall dealers provides competitively priced, service-oriented car contract hire to business, professional and local authority users. And the full service is based at a nearby Vauxhall dealership.

Vehicle leasing has many advantages, not least being the reduced burdens on company finances.

Call Master Hire Leasing on 0926 452557 for the location and number of your nearest Master Hire Leasing dealer. Their Master Hire specialist will be pleased to discuss the advantages of contract hire relevant to your business.

VAUXHALL Rental

Vauxhall Rental offers an extensive range of vehicles from a network of registered dealers.

Only Vauxhall dealers offer Vauxhall Rental, so you can be confident that the vehicle you select will be clean, well prepared and maintained and offered at really competitive rates. Ring Vauxhall Rental Headquarters on 0582 609960 for details of your nearest Vauxhall Rental dealer.



Every effort has been made to ensure that the contents of this publication were accurate and up-to-date at the time of going to press (January 1992). However, with Vauxhall's policy of continuous product improvement, the Company reserves the right to change specifications and make modifications to the vehicles described and illustrated at any time.

Vauxhall cars are equipped with components manufactured by various General Motors operating units and outside suppliers.

Any alterations affecting the description and illustrations in this publication will be notified to Vauxhall dealers at the earliest opportunity. Please consult your Vauxhall dealer for the latest information.

The colours reproduced may vary slightly from the actual paint colour or material due to the limitations of the printing process.

It should be noted that Vauxhall dealers are not the agents of Vauxhall Motors Limited and are not authorised to bind the Company by any specific or implied undertaking or representation.



Vauxhall is backed by the worldwide resources of General Motors.



VAUXHALL

Vauxhall Motors Limited, Luton, LU1 3YT
V7367 Published February, 1992