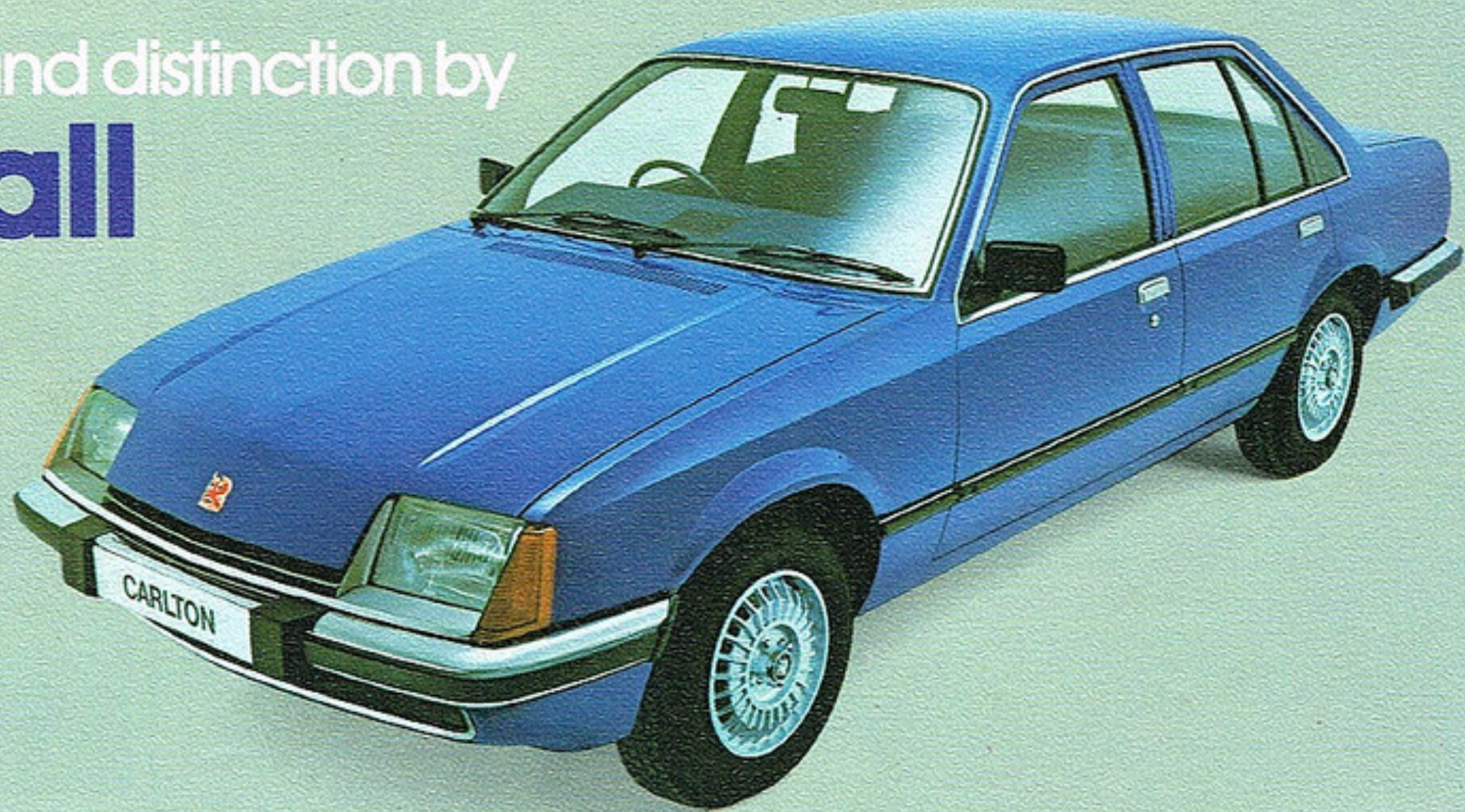


Cars of quality and distinction by
Vauxhall



Vauxhall – First choice

Among Vauxhall's 31-model line-up, there's a car to meet almost every motoring need, comprising Chevette, Viva, Cavalier and now the dynamic new Carlton and Royale models – all are superbly engineered and with an ever-widening appreciation of their sheer driveability and passenger comfort.

For from the smallest to the largest and most prestigious Vauxhall, high quality standards apply – in materials, production and testing. This ensures exceptional durability, thus preserving the investment your new car represents.

And Vauxhall bring you a wider-than-ever choice of body size and style – saloons, coupés, hatchbacks, estates – many in E-for-economy models up to GLS, with 'L' and 'GL' levels in between.

Engine sizes range from '1300' to '2800' – with GM's super smooth automatic

transmission available on all except the '1300'.

Vauxhall quality and value extend in other directions too. For example, front seat belts and thorough underbody protection are standard features on *all* Vauxhall models.

Then there's the 12 months' unlimited mileage warranty covering every new Vauxhall. Plus VIP – Vauxhall Insurance Plan – which can bring specially-reduced car insurance to Vauxhall owners in England, Scotland and Wales.

And when you need service – in every meaning of the word – then Euroservice Maintenance Plan facilities are available within Vauxhall's nationwide dealer network and at GM service points throughout Europe.

Take the wheel for a test drive at your local Vauxhall dealership soon.



Chevette

Fun to drive from the word 'go' – that's Chevette. Sporty style, nippy performance, nimble handling, superb roadholding and sure-footed braking all combine in a car with a truly unique character that has rapidly become an unqualified success with today's motorists. The sparkling 9-model line-up – saloons, hatchbacks and estate – gives all-round versatility plus real motoring economy.

Chevette Saloons meet the needs of people looking for sporty performance, overall economy, comfortable road-hugging ride, a choice of 2- or 4-doors and generous capacity boot. You choose from E, L and GL levels of luxury.

Chevette Hatchbacks pioneered the hatchback trend in Britain with their lively blend of saloon-style comfort and estate-



Chevette

type practicality. Whether you specify E, L or GL variants, all offer up to a hefty 34.5 cu. ft. load capacity with the rear seat down.

Chevette L Estate is as stylish and distinctive as its stablemates but this purpose-built thoroughbred offers 53 cu. ft. of load space, thanks to its fold-down rear seat, long flat luggage deck and high-lift tailgate.

Other useful features include a protective load deck mat and a cover for the easily accessible spare wheel.

Every Chevette has a high standard of specification including fitted front seat belts, factory-applied underbody seal, electric screenwash and 2-speed wipers.

On every Chevette, taut handling is assured with rack and pinion steering, all-coil spring suspension and anti-roll bars front and rear.



Note: Under-riders illustrated are an accessory and bright wheel-arch trim withdrawn

Viva



Note: Sports road wheels may vary from style shown

Classic good looks coupled with rugged dependability and proven economy have kept Viva high in the motoring popularity stakes. Powered by reliable 1300 and 1800 engines, it has benefited from continuing refinement and improvement to its generous specification.

Viva Saloons include 1300 E, 1300 L and 1300/1800 GLS variants in ascending degrees of luxury. There's a choice of 2- or 4-doors on all models except the ultra luxurious 1800 GLS, where 4-doors are standard. This 1800 Viva GLS is also available with GM automatic transmission.

Viva Estates in 1300 L and 1300 GLS trim levels, offer elegant 2-door-plus-tailgate styling and a highly practical 51.5 cu. ft. load capacity with the rear seat down.

In effect, Viva gives you more car for your money.



Note: Sports road wheels may vary from style shown

Cavalier

Elegant good looks, high standards of reliability, economy and performance make the Cavalier a highly-popular model among medium size cars.

From the surprisingly nippy 1300 L Saloon right up to the sleek and versatile new 2000 GLS Sports Hatch, the range combines practicality with sheer style,



exceptional roadholding with crisp handling.

Cavalier 1300 L and 1600 L saloons come with the choice of two or four doors.

For even greater luxury and performance the 4-door 1600 and 2000 Cavalier GL Saloons are unbeatable in their class.

The 2000 GLS Coupé has roadholding and performance to match its sleek style, and the GLS Sports Hatch in 1600 and 2000 versions is a sporty yet practical load carrier with great panache.

All Cavaliers feature attractive and durable cloth upholstery, fitted front inertia reel seat belts, reclining front seats,



Note: Seat trim may vary from style shown



Cavalier

halogen headlamps, heated rear window and face level air and side window demister vents.

The higher-performance Cavaliers have the 2000 engine – a cam-in-head design with hydraulic tappets that require no adjusting. Performance of these models is no less than vivid, with the 1600-engined versions not far behind.



Carlton

The beautifully-proportioned Carlton Saloon and Estate combine superb roadholding and impressive performance with remarkable spaciousness and luxury.

The computer-tuned suspension system is of advanced design and gives the Carlton impressive roadholding and ride comfort.

Inside plush velour cloth upholstery, adjustable front seat head restraints, push button radio and a driver's seat adjustable for height as well as reach and rake hint at the comprehensive features that make the Carlton highly distinctive among 2-litre cars.

The capacious boot swallows more than 14.0 cu. ft. of luggage.

A powerful and well-proven 2000 engine can sweep the Carlton to well over 100mph, with powerful acceleration to match.



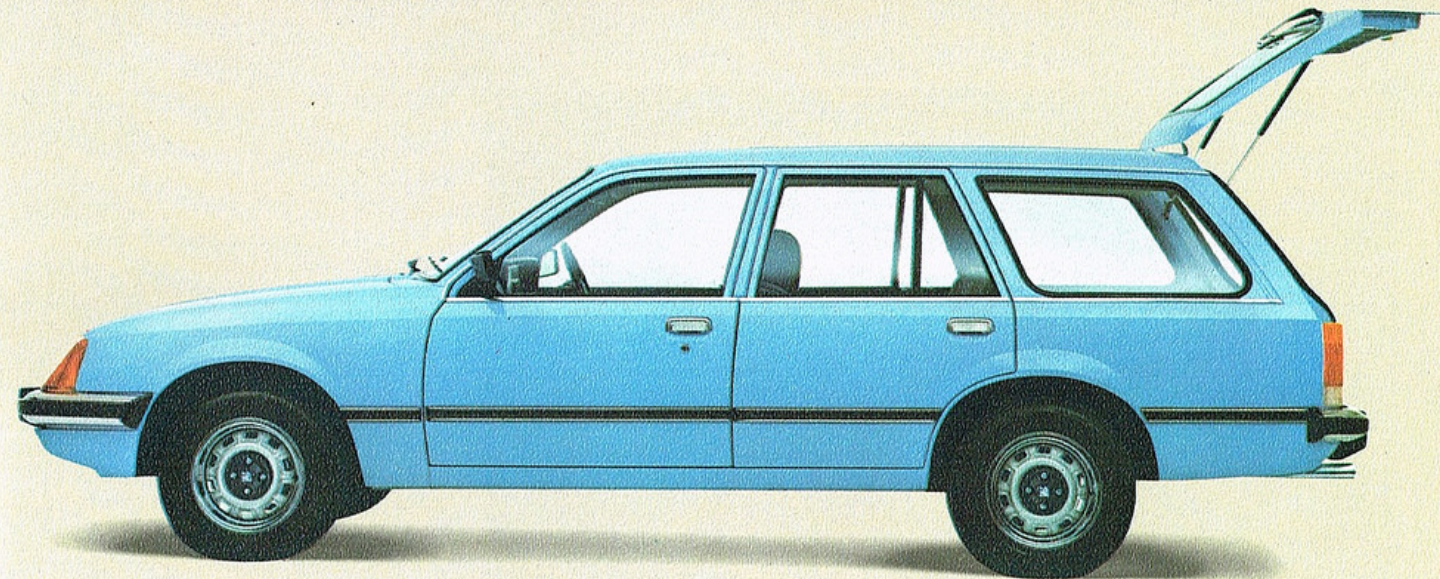
Carlton



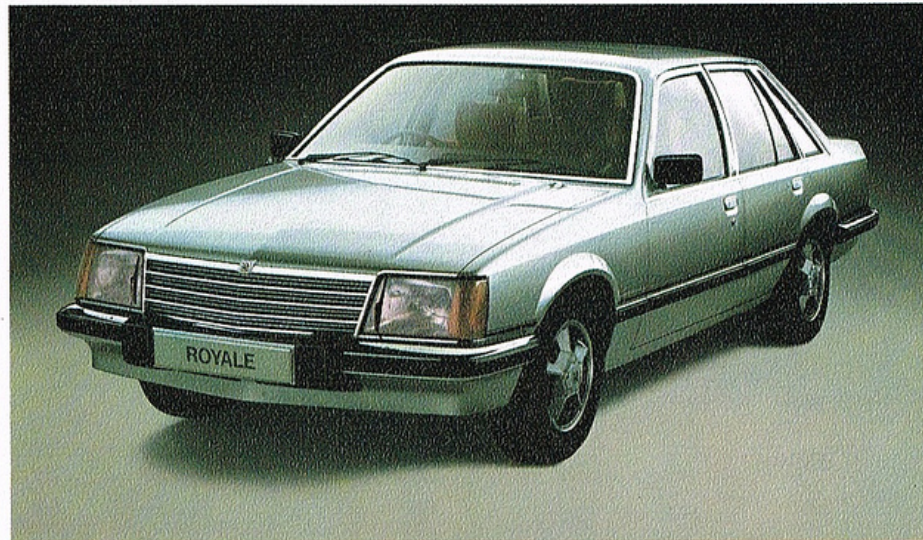
The Carlton Estate, with the same high levels of features as the Saloon, makes the ideal dual-purpose car for business or pleasure.

With the rear seat down it can take up to 76.3 cu. ft.

Gas-filled struts make light work of lifting the tailgate, which also incorporates a wash/wipe system.



Royale



Spacious comfort, discreet opulence, innovative engineering – all combine to make the Royale one of Europe's truly great cars.

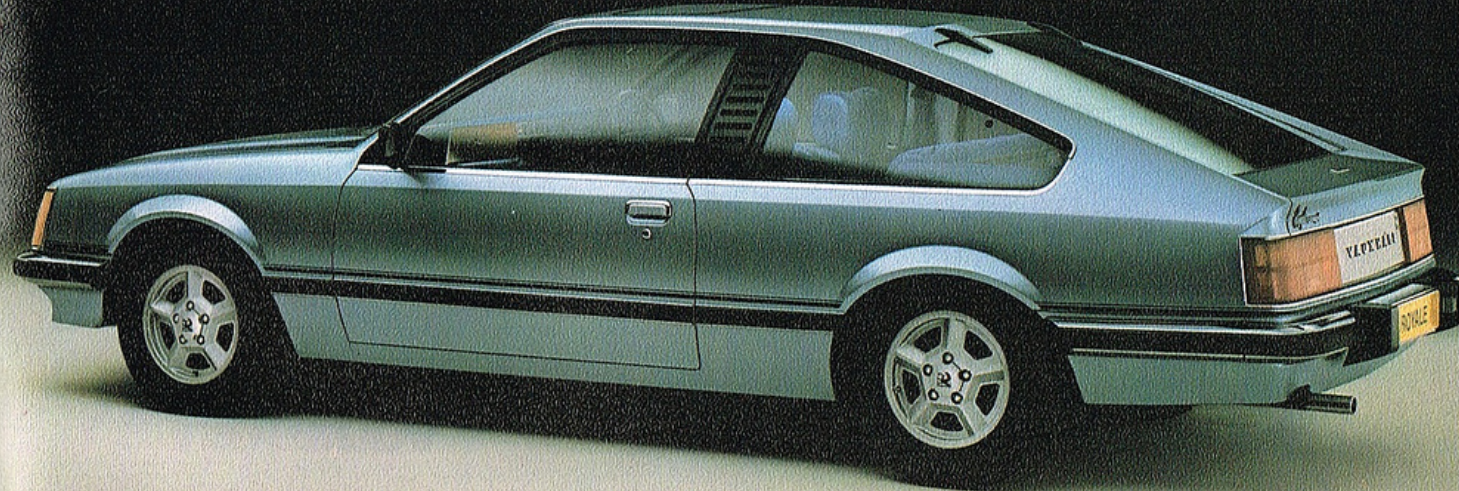
In effect, the Royale is two cars: Saloon and Coupé. There is nothing ordinary about either model, which share a comprehensive luxury specification.

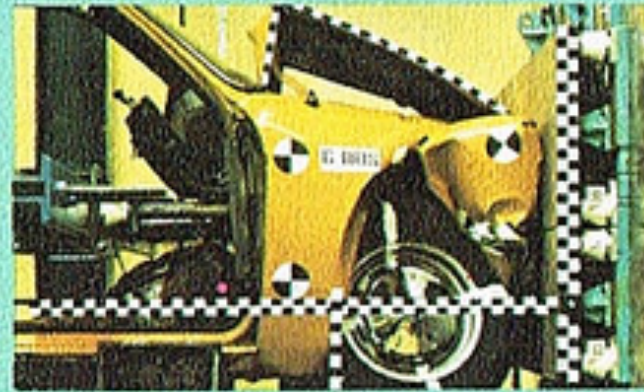
Automatic transmission is standard; so too are power steering and power-operated windows.

There is tinted glass all round, and a sunshine roof.

Those are just a few of the features indicative of the thoughtful approach to a car of great distinction.

A well-proven, powerful six cylinder 2800 engine provides performance levels in keeping with its prestige appearance.





Quality controlled from start to finish. Quality starts at the design stage, with the elimination of corrosive traps in the body. Then come constant checks during assembly, plus a highly effective body protection treatment. Randomly-chosen current production models undergo the same tests they sustained as prototypes at Millbrook Proving Ground. There, brutal punishment is meted out, including impact barrier tests to prove effectiveness of front and rear 'crumple zones'. At Vauxhall, quality is coupled to reliability and safety. All through.

Vauxhall  

The information contained in this brochure was accurate at the date of going to press (September 1978). The Company, however, reserves the right, while preserving the essential characteristics of the models described and illustrated, to introduce at any time modifications, changes of details, equipment or accessories as may be considered necessary to improve the models described or for any other reason of a constructional or operational nature. Every

endeavour will be made to bring the brochure up-to-date at regular intervals, but in order to avoid any misunderstandings, any person interested should enquire of the Company, or their dealers or distributors, as to whether there have been any material alterations since the date of issue of this brochure. The colours reproduced may vary slightly from the actual paint colour due to limitations of the printing process.