



VAUXHALL 72



VIVA 2-DOOR

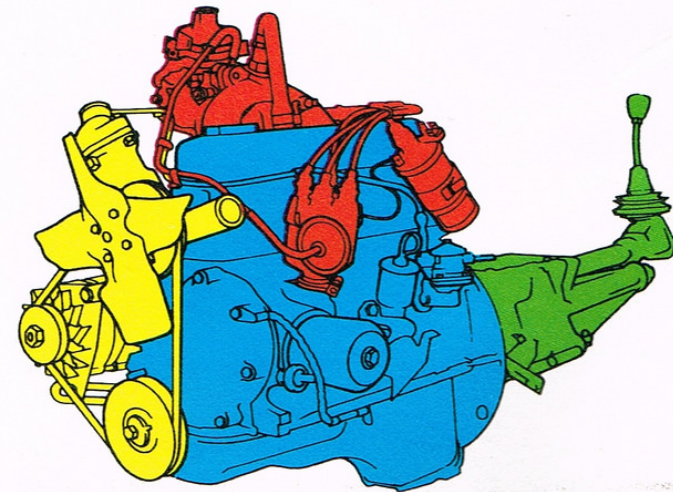
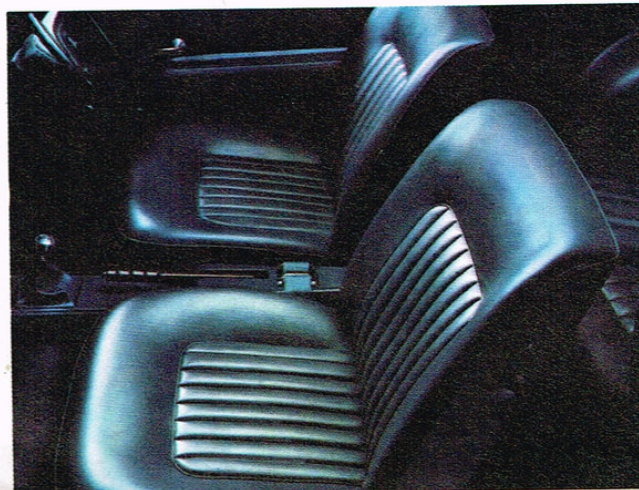
The trim lines of the Viva 2-door conceal lots of room inside. With big, wide-opening doors and wonderfully comfortable seating; and with quick-release safety catches for the tip-forward front seats.

For the driver, there's a short, stubby gear lever right to hand (4-speed, all-synchromesh to get you places smooth and fast), and instrumentation that includes bi-metal gauges giving a steady reading under all conditions. There's through-flow ventilation with adjustable face level air vents, and air extractors in the rear of the car: there's a heater and demister with a 2-speed booster fan.

The engine is the flexible and willing 1256 cc unit that leaves the others behind without burning up the petrol, too!

Viva 2-door comes in three versions: standard, de Luxe and SL (Super Luxury).

You'll find there's an enticing range of optional equipment available too — among this, GM Automatic transmission and Starmist metallic finish Magic Mirror paintwork. Underbody seal is standard.





VIVA 4-DOOR

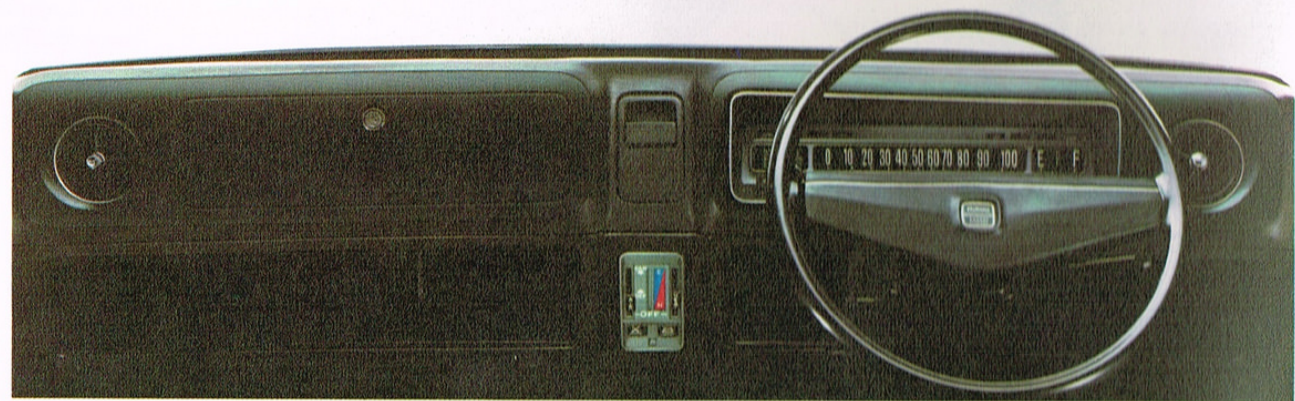
In this beautiful saloon, you have all the positive advantages of the Viva with the added usefulness of four doors. Just fine for how-quickly-they've-grown-up families!

The Viva 4-door comes in de Luxe and SL versions, with the same finishes and options available as for the 2-door models.

The Vauxhall safety story

All Vauxhall cars have special built-in safety features. Many are common to all models in the range. They include an energy-absorbing steering column designed to collapse progressively on impact; a dual-circuit braking system to guard against brake failure due to fluid loss; fork bolt locks with strong anti-burst characteristics; and built-in seat belts at no extra cost. Your safety comes first with us at Vauxhall.





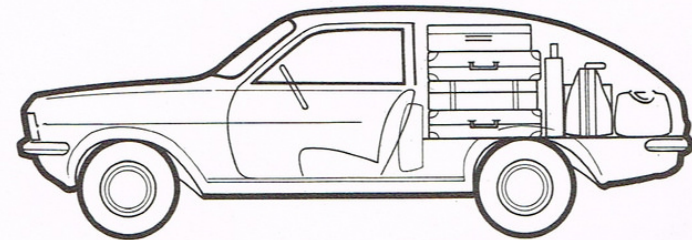


VIVA ESTATES

Viva Estates are big – and they're beautiful. With 62.3 cubic feet (A.M.A.) of luggage space extending from the folding rear seat to the tailgate. With floor covering in easy-clean Vynide and a very low loading height. The counterbalanced tailgate opens wide and well clear of the body.

Inside, see how comfortable the seating arrangements are, how comprehensive the instrumentation. You'll find everything that goes to make the Viva Saloon such a good buy – and everything to make it the Estate Car you've always had in mind.

Viva Estates come in de Luxe and SL versions and are powered by Vauxhall's latest 1256 cc engine, with the option of the '1600' unit. They are available in a wide range of Magic Mirror acrylic colours – other options include Starmist metallic paintwork and GM Automatic transmission. Underbody seal is standard.





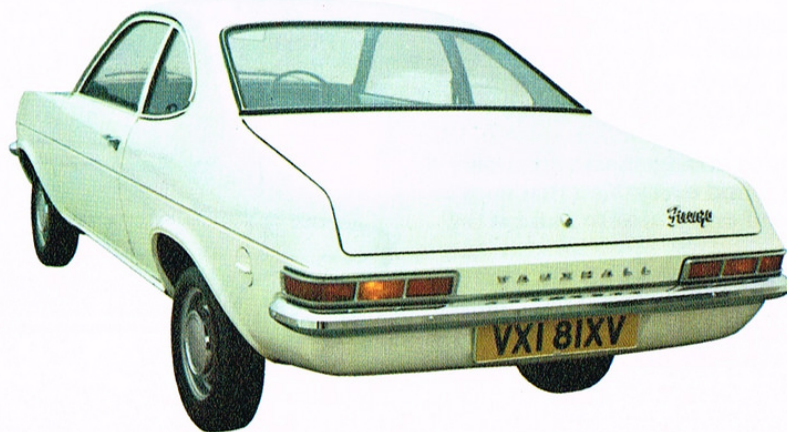
FIRENZA

Firenza is a car that's elegant all round, with sportiness thrown in for good measure!

And good measure is certainly what you get with the Firenza. Rack and pinion steering and coil springs all round give you superb handling. While the comfort angle is covered by the form-fitting seating in luxurious Ambla with plenty of leg room front and rear: the face-level fresh air vents that are adjustable to any angle.

Good measure is what you get where power is concerned. The standard unit in the Firenza de Luxe and SL (Super Luxury) versions is the lively 1256 cc engine, with the more powerful '1600' unit optionally available.

Choose from a wide range of colours in Magic Mirror acrylic lacquer, with metallic finish Starmist as an optional extra. And all models come complete with underbody seal applied in the factory.

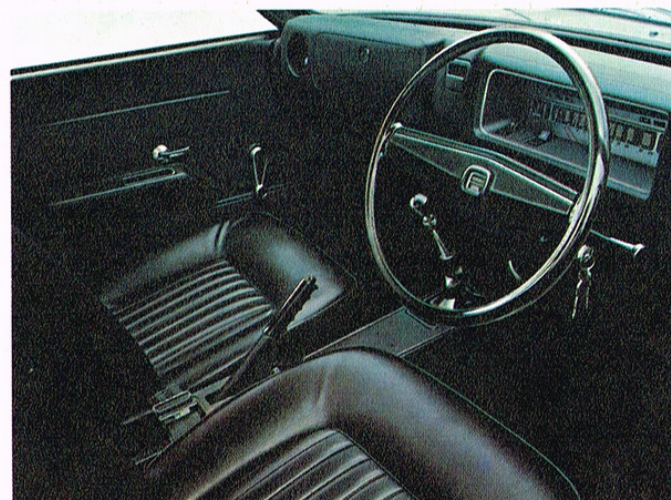


Here's where the sporting characteristics of the elegant Firenza are really exploited to the full. 2 litres under the bonnet make this a highly individual car with a highly impressive performance.

The power derives from Vauxhall's well proved 1975 cc overhead camshaft engine, using twin carburettors to get the best from it.

To match the way the Firenza 2000 SL performs, there's a special gearbox and toughened suspension, with anti-roll bars front and rear. Plus 10-inch disc brakes up front, 9-inch drums in the rear — power assisted all round. Like all Firenza models, the 2000 SL comes complete with an alternator to keep the battery at peak power even when the engine is idling.

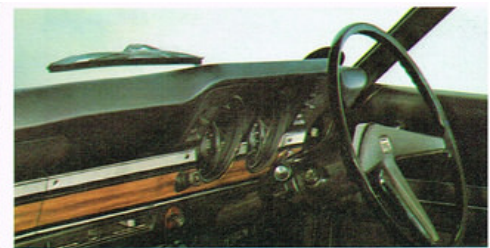
Internal appointments are as the Firenza SL with the 1256 cc unit, with the same optional extras available. And what about Rostyle wheels and a black Vinyl roof cover to individualise your Firenza SL or 2000 SL even further . . . ?



FIRENZA 2000 SL

7





VICTOR

Meet the car designed for anything but a pint-sized family! But that's just one way of looking at Victor. Because it's very much a car designed for the driver with performance in mind.

Victor's family outlook comes from its practical proportions and down-to-earth qualities. There's more than enough room inside for really long-leggers — five adults or countless kids. There's more than enough attention to detail in the well appointed interior: in the form-fitting seats, the easy-read instrumentation, the controls right to hand, the choice of 3-speed column-gear-change or 4-speed floor change — the choice of front bench seats or individualised seating front *and* rear.

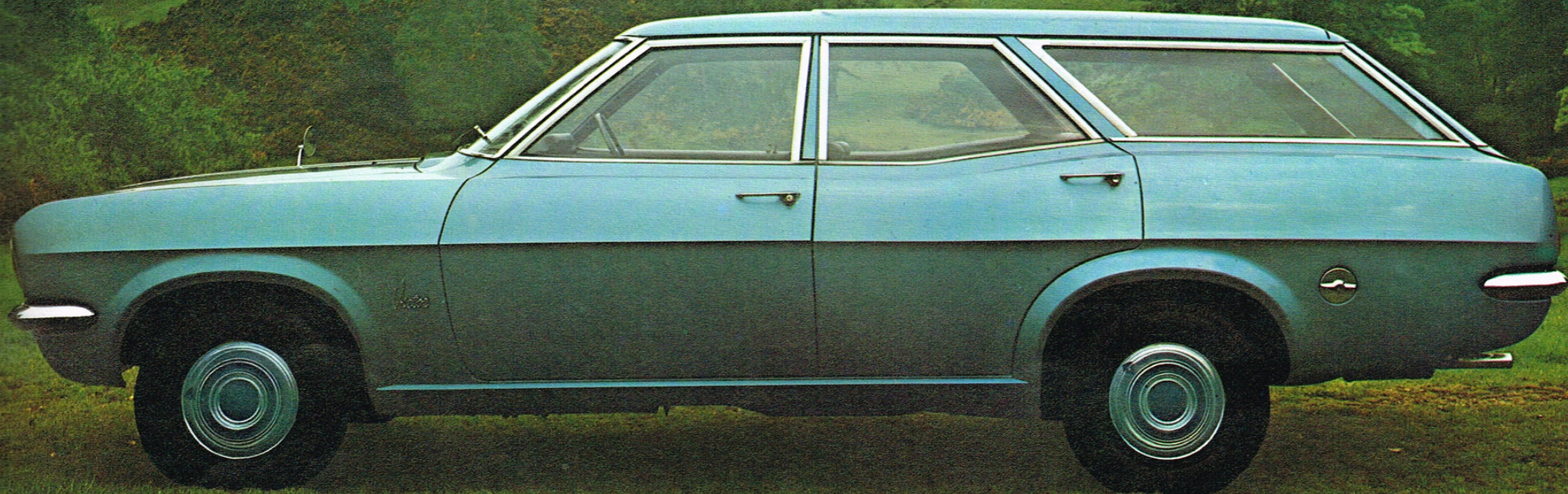
Victor's performance comes from the choice of engines available. The '1600' (1599 cc) unit that goes with the Victor Super — which gives you lively performance coupled with low consumption: and the 2000 (1975 cc) unit of the Victor 2000 SL — with power enough to really kick over the traces.

Try a Victor for size. For power. For the choice of options that goes with it . . . like GM Automatic transmission (with the 2000 engine), overdrive . . .

See the wide range of colours in Magic Mirror acrylic lacquer, with optional Starmist metallic finish. See what Victor has to offer *you* . . .







VICTOR ESTATES

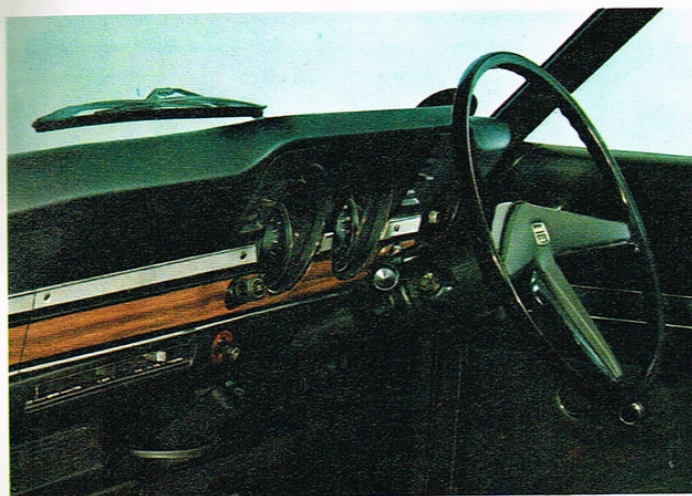
With the Victor Estate, the inside story is one of luxury — whether you choose the Super or 2000 SL version. In the same way, the appointments are as comprehensive as you could wish for, with front bench seats the practical choice for the Super.

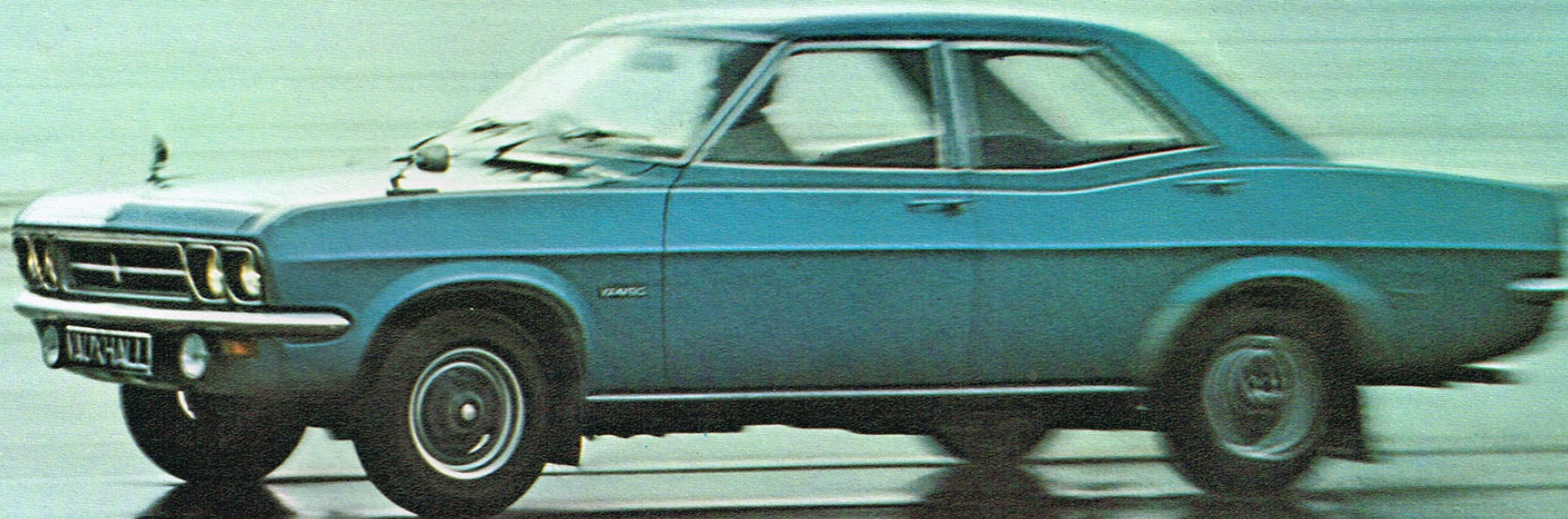
There's no less than 67 cubic feet* of luggage space on the deck, with an easy-lift counterbalanced tailgate. The loading height is good and low, too.

Now choose the power you'd like in your Victor Estate. The '1600' engine with the Super (2000 optional). The SL version has the 2000 (1975 cc) unit as standard. And if you really want to pack in the power as well as the goods and chattels, there's the 3300 SL Estate. This gives you a lot of muscle and a very easy stride. . .

There's a beautiful choice of Magic Mirror colours, including the optional Starmist metallic finish. GM Automatic transmission is optional on 2000 and 3300 models, too. Underbody seal is standard.

*A.M.A. Cargo Volume Index.





VX 4/90

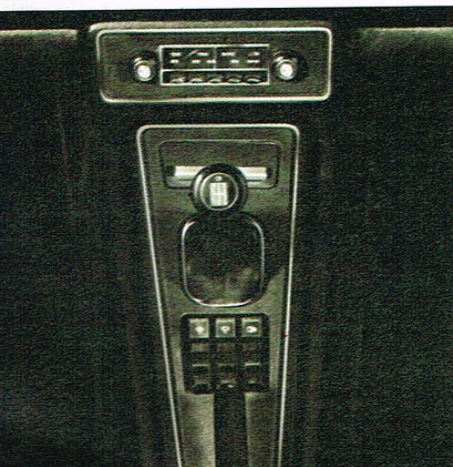
Once you've settled into Vauxhall's VX 4/90, you'll settle for nothing less than the best ever again!

The VX 4/90 gives you the ultimate in 2-litre motoring, with all the power you need in Vauxhall's tried and tested 1975 cc engine with its overhead camshaft and twin carburetters.

You get power assisted brakes (front discs)*; beautifully positioned gear lever in a central console (four-speed gearbox and overdrive are standard); rack and pinion steering, and a wide track and all-coil suspension to hold you firm on the road and smooth out the bumps.

And all the luxury is there, with deep-pile carpeting, the interior richly upholstered in Ambla with reclining front seats, and full instrumentation and controls.

Rostyle wheels give the VX 4/90 a very distinctive look — and, of course, it comes in a wide range of Magic Mirror colours with optional Starmist metallic finish. Underbody seal is standard.





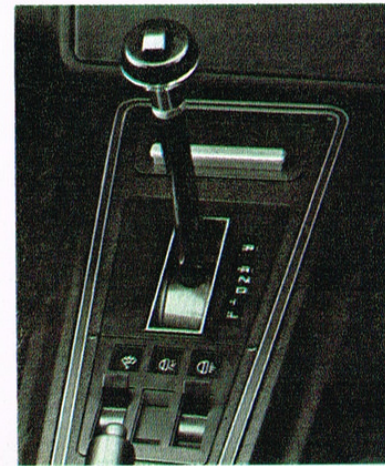
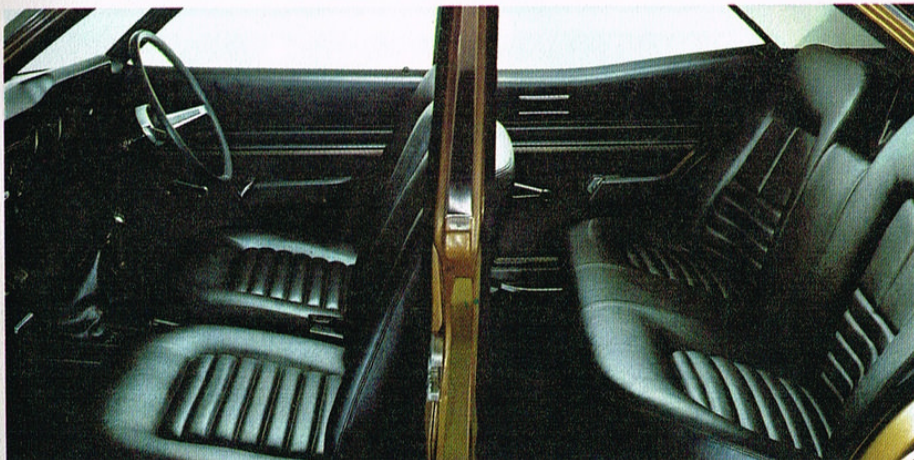
VENTORA

Introducing the travelling power-pack. The Ventura. It sports a bigger-than-3-litre engine but is as docile as a car with half as much—thanks to six cylinders.

Matching its beefy 3.3 litre power, Ventura has power assisted brakes with front discs, a wide track and coil springs all round.

Inside, the Ventura is super luxurious, with front reclining seats, individualised rear seating, the ultimate in instrumentation, a leather rim, alloy-spoked steering wheel, cigar lighter and heated rear window.

Outside, the Ventura sports Magic Mirror paintwork (with a choice of Starmist metallic finishes at no extra cost). The roof is distinctively covered in black Vinyl; a distinctive harmonica grille and special wheel trims complete its distinguished appeal. Underbody seal is standard.





CRESTA

The Vauxhall Cresta is a big car in every way . . . built to take a full-size five in comfort: and built to take the miles in its stride.

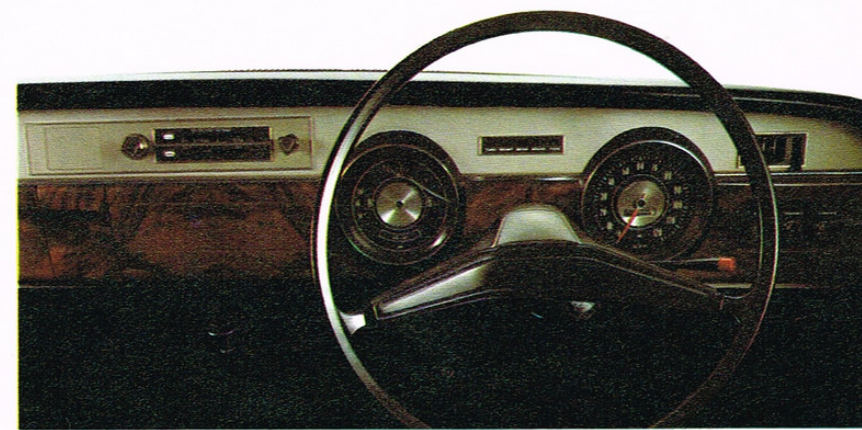
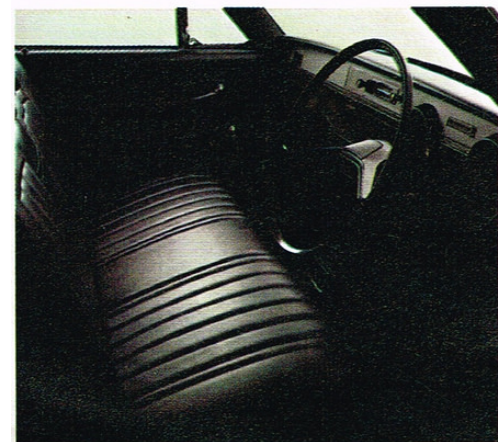
The Cresta has a beautifully shaped bench seat in the front (with individual seats optionally available). There are armrests on all the doors, with front door map pockets and courtesy light switches.

The rich walnut facia reminds you that the Cresta is big in luxury and, naturally enough, there's tailored carpeting right through the car.

3.3 litres in the Cresta let you take it easy whatever the speed, with power assisted brakes to give you confident stopping power.

To end up, there's 30 cubic feet of boot space. Enough room? Enough said!

The Cresta comes in standard and de Luxe versions and is available in many different Magic Mirror colours (with optional Starmist metallic finish). Underbody seal is standard.





VISCOUNT

Automatically supreme in the Vauxhall range. With the superb GM Automatic transmission. With power assisted steering. With power assisted brakes (front discs). With power windows all round, controllable from the fascia. With wall-to-wall deep pile carpeting and leather upholstery.

There are so many other luxuries built into the Viscount . . . such as the fascia clock, cigar lighter, reclining front seats, heated rear window . . . even a carpeted boot with its own lighting.

One luxury you can take for granted — Vauxhall's mighty 3.3 litre engine — as effortless at top speed as when it's idling. Strong, smooth and silent . . .

The Vauxhall Viscount. Automatically the best. Available in standard Magic Mirror paintwork or Starmist metallic finish. Complete with full underbody seal.



Vauxhall Rangefinder

Models	Engines	Price	Transmissions	Models	Engines	Price	Transmissions
VIVA SALOONS				VICTOR ESTATES			
2-door	4-cyl 1256cc (62.5bhp)	£802		Super Estate	4-cyl 1599cc (80bhp)	£1183	O
2-door de Luxe	4-cyl 1256cc (62.5bhp)	£883	A	2000 SL Estate	4-cyl 1975cc (108bhp)	£1308	O A
2-door SL	4-cyl 1256cc (62.5bhp)	£989	A	3300 SL Estate	6-cyl 3294cc (140bhp)	£1464	O A
4-door de Luxe	4-cyl 1256cc (62.5bhp)	£921	A	Dimensions: Length 14ft 8 $\frac{3}{4}$ in Width 5ft 7in			
4-door SL	4-cyl 1256cc (62.5bhp)	£1027	A	Optional on Super, 1975cc (108bhp) engine			
Dimensions: Length 13ft 6in Width 5ft 5in				VX 4/90			
Optional on SL models, 1599cc (80bhp) OHC engine				4-cyl 1975cc (112bhp)			
VIVA ESTATES				Dimensions: Length 14ft 8 $\frac{3}{4}$ in Width 5ft 7in			
De Luxe Estate	4-cyl 1256cc (62.5bhp)	£996	A	VENTORA 2			
SL Estate	4-cyl 1256cc (62.5bhp)	£1102	A	6-cyl 3294cc (140bhp)			
Dimensions: Length 13ft 6in Width 5ft 5in				Dimensions: Length 14ft 8 $\frac{3}{4}$ in Width 5ft 7in			
Optional on SL, 1599cc (80bhp) OHC engine				CRESTA			
FIRENZA				6-cyl 3294cc (140bhp)			
De Luxe	4-cyl 1256cc (62.5bhp)	£973	A	CRESTA De Luxe			
SL	4-cyl 1256cc (62.5bhp)	£1052	A	6-cyl 3294cc (140bhp)			
2000 SL (OHC)	4-cyl 1975cc (112bhp)	£1227	A	Dimensions: Length 15ft 7in Width 5ft 9 $\frac{3}{4}$ in			
Dimensions: Length 13ft 6in Width 5ft 5in				VISCOUNT			
Optional on De Luxe and SL models, 1599cc (80bhp) engine				6-cyl 3294cc (140bhp)			
VICTOR SALOONS				£2066			
Super	4-cyl 1599cc (80bhp)	£1071	O	£1978			
2000 SL	4-cyl 1975cc (108bhp)	£1196	O A	AS manual gearbox			
Dimensions: Length 14ft 8 $\frac{3}{4}$ in Width 5ft 7in				Dimensions: Length 15ft 8 $\frac{1}{2}$ in Width 5ft 9 $\frac{3}{4}$ in			
Optional on Super, 1975cc (108bhp) engine				Transmissions: O = Overdrive optional at extra cost			
				OS = Overdrive standard A = GM Automatic optional at extra cost AS = GM Automatic standard			
				Vauxhall Motors Limited, Luton, England			
				The right is reserved to alter any details of specification and equipment without notice. V2057/10/71. Printed in England.			