

1995 ELITE SALOON AND ESTATE MODELS EDITION NUMBER 2

OMEGA

FROM VAUXHALL

ELITE



VAUXHALL

The Omega Elite from Vauxhall is a luxury car that demands you reassess your perception of what's really important.

Because that's how Vauxhall approached the task of defining their requirements when planning for a new flagship.

As a consequence, Safety, Comfort and, above all, sheer Quality suffuse every facet of the design, and the result is a range of impeccably stylish saloons and estates that fulfil every need and exceed every expectation.

ELITE

FROM VAUXHALL



Contents

An Elite Assembly 4

A Certain Style 6

Creature Comforts 8

Insider Information 10

Stronger, Safer, More Secure 12

The Balance of Power 16

Elite. A Personal Choice 18

Specifications 20

Customer Care 24



In the Elite, Vauxhall has created a car free of compromises and second-bests. Quality in every detail, first class safety and cossetting comfort combine to make the Elite a uniquely satisfying driving experience.

The guiding principle of 'quality above all else' serves it well and gives an aura of pres-

tige obvious to even the casual observer. The elegant proportions of both saloon and estate are perfect; the styling details restrained yet distinguished; the overall effect, stunning.

But in the Elite, beauty is far more than skin deep – those bodies enclose cabins that are safe and stylish, spacious and equipped with

AN ELITE ASSEMBLY



everything you could possibly need – and all you could possibly wish for.

Underpinning it all is engineering of the highest calibre. Power is provided by a state-of-the-art 3.0i 24-valve V6 or a refined 2.5 turbo diesel. Transferring that power to the road with a minimum of fuss is a computer-controlled,

load-sensing automatic transmission. Ride quality reaches new heights and handling is assured and composed thanks to chassis dynamics that are in the very highest bracket of excellence.

Elite. The name tells you everything you need to know.



A CERTAIN STYLE

The flawless paint and tight shut lines; the timeless elegance and imposing presence; the classic detailing and perfect proportions.

Elite's curvaceous styling – highlighted by 2-coat metallic or pearlescent paint and finished off by classic five-spoke alloy wheels – sends a powerful, subtle but unmistakable message. Quality is everything.

SHARED BEGINNINGS, DIFFERENT ENDINGS

The Elite bodystyles achieve a difficult double act, featuring a collection of individually stun-



ning design details, yet creating an overall impression that's greater than the sum of even those outstanding constituent parts.

The depth of the quality of design can be gauged by the attention lavished on the simplest functional feature – from the flowing shapes of the door handles to the boot and tailgate latch which so stylishly incorporates the Griffin badge.

But the success of the design rests on the overall impression. The elegance of the



basic proportions

combines with the glassy upper

body and gently sloping profile to give the cars real impact. Yet the low nose and slim rear end give them an appealingly solid, compact appearance.

Saloon and estate share the same front end. The classic chrome grille discreetly signals the cars' prestige and focuses the attention on the proud Griffin badge.

The sloping bonnet and graceful front wings lead back to the sharply raked windscreen that signals the

parting of the ways for estate and saloon styling.

Saloons continue back to a rounded, raised bootline which, in common with the side panels and bonnet, bears a subtle swage line. Along with the bright-highlighted side moulding, it's the last shared detail.

The estate's individual look begins with a roofline that rises gently in concert with the waistline to give a purposeful aerodeck look, complemented by the practical roof rails. The styling terminates in a huge, rounded tailgate, completing a dynamic look that's a million miles away from the traditional, boxy estate image.

AERODYNAMISM

Given Vauxhall's acknowledged mastery of the aerodynamic arts, it should come as no surprise that the elegant Elite shapes are exemplary in this respect too.

Bumpers and valance mouldings – with flush fitted fog lamps – integrate smoothly and help channel air around the nose, while unique one-piece lamp lenses add style and efficiency to an impeccably aerodynamic frontal aspect.

Working backwards, both bodyshells boast other features designed to further aid efficient airflow management. The windscreen surround has a lip to keep water away from the



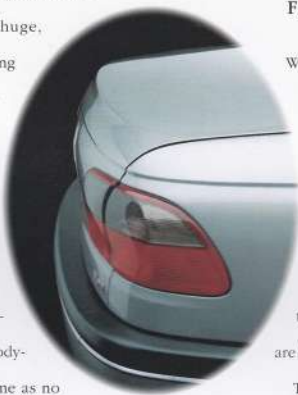
side windows, and colour keyed door mirrors deflect wind and water away from the side windows. The side glass itself – along with the beautiful door handles and the fuel filler flap – is flush fitting to reduce turbulence.

FUNCTIONAL FORMS

While appearance is vital, achieving those looks can't be allowed to compromise functionality – even in a luxury car. Vauxhall understands this perfectly, and in creating the two Omega styles, ensured from the very start that they would be as practical as they are beautiful.

The saloon – and particularly – the estate's rear end style allows provision for huge load areas, made all the more versatile and usable by the clever split/folding arrangements of the rear seats.

In this, and every other area of their design, both these cars demonstrate a seamless combination of form and function that marks them, and their drivers, apart from the crowd.





CREATURE COMFORTS

Telephone installation kit is available as a no cost option.

The compact impression an Elite gives on the road is shattered the moment you step into the passenger compartment.

The immediate feeling is one of roominess and light, aided by efficient use of space, large, deep windows and programmed glass sunroof. Once accustomed to this, you can start to appreciate the finer points of a design intended to provide an oasis of air-conditioned calm in a high pressure world.

The cabin echoes the themes of the bodystyling, with the bold sweeping curves complemented by brilliant detailing of controls and displays. Materials are of a uniformly high quality and the resulting ambience is a happy marriage of tradition and leading-edge modern.

Seats – heated in both front and rear – support as surely as they cosset, covered in supple leather or optional velour; leather also sheathes the steering wheel, there's thick carpet



on the floor and deep-grained, soft-touch mouldings everywhere else completing an interior that's a tactile, as well as visual, delight.

Rear seat passengers get their own heating and ventilation ducts and reading lamps – and the rear windows even have demist vents so they don't miss the view either.

And so that drivers can enjoy the surroundings as surely as their guests, conducting the Elite has been made as effortless as it is

satisfying. There's speed sensitive power steering and automatic transmission (though a 5-speed manual can be specified) there's tap-up tap-down cruise control and all controls and switches are perfectly placed and ideally weighted for fingertip control.

It's a cabin that engenders a feeling of quiet satisfaction in its occupants. An environment that makes you feel you've really arrived – even if you've just set off.

INSIDER INFORMATION

That the Elite's cabin achieves its 'sanctuary from-the-real-world' aim is evident from the briefest encounter. However, the longer you spend with the car, the more you start to appreciate the thoroughness with which its designers approached their task.

Electric windows are *de-rigueur* in a car of this calibre – Elite boasts one-touch operation, safety auto-reverse and a pre-programmed electric tilt/slide sunroof too, all of which can be closed from outside the car using the infra-red



remote control; other thoughtful details include an electrically operated rear sunscreen on saloon models to guard against glare and keep

the rear of the car cool and shady and a photo-chromatic rear view mirror that darkens when it detects the glare from headlamps of a following car.

It's all a direct result of the Quality, Safety, Comfort design philosophy – and it applies just as keenly to every other area of the interior environment.

FACIA. THE FACTS

From the driver's seat, the Elite's operating essentials are spread before you, switches easily reachable, instruments instantly readable.

To the left of the instrument binnacle is the alphanumeric readout of the Driver Information Centre, showing audio details, and trip computer information as well as dis-



Classic
Outs. Temp.
16.5 °C
2035



playing time/date and outside temperature. And, with full servo-operation – and a 3-position memory function for the driver's seat – a perfect driving position and lasting front seat comfort become a push-button formality.

The centre console houses an advanced heating and ventilation system that incorporates a pollen filter, air-recirculation and individual, side-to-side temperature control. It works in conjunction with the CFC-free air-conditioning system to give the occupants total, independent control over their cabin environment.

IN CAR ENTERTAINMENT

Just below these controls sits the heart of the Elite's in-car entertainment system – for once a description that's entirely justified. There's speed sensitive volume control and a stereo radio unit with the very latest in RDS EON services; there's an auto-reverse cassette player and, to top it all off, there's a boot-mounted



six-disc CD auto-changer. Eight speakers guarantee that sound quality more than lives up to the promise of the system's exotic specification.

The unit is four-figure security coded and, with a remote display – the Driver Information Centre doubles as an audio readout panel – and an aerial built into the rear screen, security is assured.

COMMUNICATIONS ON THE MOVE

As befits its status as a car for the coming century, Omega can be fully-equipped to take advantage of the mobile communications revolution.* If specified as an option, the lid of the central armrest unit hinges forward and accommodates a special housing for an in-car telephone. This has the twin advantages of facilitating hand-free conversations and also conceals the equipment when not in use.



For hands-free operation, the system broadcasts the call through the left front audio speaker, while automatically muting the output from the 'stereo'. The in-car conversant can speak directly at the phone, or into a neat roof-mounted microphone. The system's rear aerial is included, but the handset is not.

** Telephone installation kit is available as a no cost option. NB. Certain handsets are not compatible. See your dealer for details.*

STRONGER. SAFER. MORE SECURE

Safety and security are key issues in today's motoring world, with growing public awareness and concern putting both firmly at the top of the agenda for the future.

Now, that safer, more secure future has arrived, in the shape of the Omega Elite.

INTEGRATED SAFETY

Passive safety starts with designed-in strength. The Elite's computer-optimised bodyshell is based around a hugely rigid passenger survival cell, protected front and rear by progressive deformation zones. Side impact protection is particularly strong, with twin door bars and strengthening of strategic structural points.

Moving inside, the Elite is equipped to look after you like no other car thanks to the 'Reflex' 3-phase integrated safety system. It starts with seat-belt web-clamps – on front and outer rear belts – which are activated by heavy



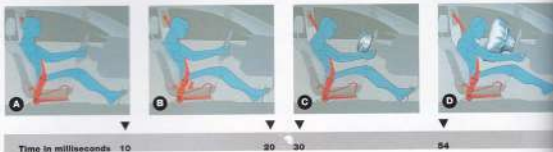
braking and prevent any unspooling of belt material. Heavier collisions trigger the Body-lock restraint system, a seat-belt pre-tensioner which almost instantly takes up any slack in the belt caused by clothing or posture, holding the occupant securely in the seat.

Finally, frontal impacts above 20mph activate the twin airbag safety system which deploys the driver and front seat passenger full-size airbags. In Omega, these are nearly twice the size of some manufacturers' Eurobags.

Elite's passive safety measures also include height adjustable seatbelts, five height adjustable head restraints and anti-submarining ramps in every seat cushion; saloon and estate have a load area floor net and the estate has a



- A** Web clamp locks
- B** Body-lock completed
- C** Airbag activates
- D** Bag unfolds
- E** Bag fully inflated
- F** Full contact made, bag already deflating
- G** Rebound phase, bag deflates



vertical load net to prevent loads shifting into the passenger area.

ACTIVE SAFETY

The Elite also features an array of safety systems designed to make driving less hazardous. Besides the superb chassis dynamics, the Elite features four-wheel anti-lock braking which, on 3.0i models, is combined with Traction Control. The resulting integrated system works unobtrusively to ensure the driver retains full control



whether braking, accelerating or cornering under even the most demanding of road conditions.

ADVANCED SECURITY

The Elite can protect itself and your possessions just as surely as it looks after you.

Its formidable defences start with all-round central locking and security deadlocks on



84

150

all doors, the boot/tailgate and the fuel filler flap. A sophisticated alarm system provides comprehensive all-round protection, operated by an infra-red remote control.

The remote and its receiver use an ever-changing rolling-code system, which randomly selects a sequence from over 69 billion possible combinations thereby defeating the 'grabbers' used by hi-tech car thieves.

But at the core of the Elite's anti-theft armoury is the Engine Deadlock Immobiliser. This state-of-the-art system is activated automatically when the ignition key is removed. When the ignition is turned back on, a transponder in the key sends a coded signal to the engine management system. If the code is accepted as correct, the engine starts. If there's no signal or the wrong key is used the engine simply will not run. The signals cannot be



interfered with and the transponder itself is virtually unbreakable.

Audio security, too, is well up to the mark. The separate display makes theft less appealing, and the unit's 4-figure 'burnt-in' code makes re-coding impossible.





THE BALANCE OF POWER

The Omega philosophy of 'Quality, Safety and Comfort' dictates that, when it comes to engineering, the Elite places refinement and 'power in reserve' above such bar-room trivia as 0-60mph acceleration and top speed.

So the engines are powerful, muscular and wonderfully refined; the automatic transmission shifts imperceptibly and changes down at a moment's notice; the chassis offers a fluid ride, tenacious grip and assured handling; the overall effect is a joy to drive.

POWER IN RESERVE

The Elite's engines are among the most advanced available in their respective fields.

The 3.0i 24v V6 is the ultimate expression of Vauxhall's ECOTEC engine programme – that's Economy, Ecology, Technology. In practical terms, that means it employs state-of-the-art

petrol engine technology to deliver outstanding mid-range performance, excellent fuel economy and low toxic emissions.

The figures read 210PS and 270Nm at just 3600rpm, in the

real world, its virtually flat torque curve means instant response and acceleration on



demand in any gear throughout the rev range.

Choose the diesel option, and you get a 2.5 litre six-cylinder turbo diesel that's generally recognised as the world's finest of its type. With a sophisticated electronic control system, the unit offers low noise levels, and outstanding



refinement – especially at idle – plus petrol-style power delivery and performance with traditional diesel car economy.

Unusually, this unit has a special oxidising catalyst that makes it one of the 'cleanest' of all road car engines, cutting exhaust gas pollution and 'diesel soot' to the absolute minimum.

SOPHISTICATED TRANSMISSIONS

Elite's standard automatic transmission is among the most advanced on the road today. It too has



electronic control, which is linked to the engine electronics to ensure ultra-smooth shifts both up and down the 'box.

There are four speeds, three selectable modes for Economy, Sport and Winter driving and a manual shift option too, allowing far more control than many autos in this sector, which tend to take decision making away from the driver. And, with a lock-up clutch in 3rd and 4th and unique load-sensing 'adaptive shift pattern' technology, there's virtually no fuel penalty over a traditional manual five-speed.

A five-speed manual is available on Elite, at no extra cost, fitted in conjunction with a hydraulically-operated clutch which reduces pedal effort, gives smoother operation and increases driving pleasure.

CHASSIS ENGINEERING

A wide track and superb body control combine to make the Elite's chassis inherently safe and stable on all types of road.

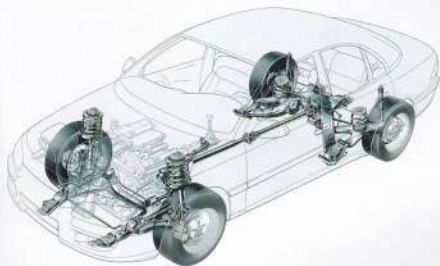


The front suspension uses a modified MacPherson strut arrangement and incorporates silicon-filled hydro-bushes to insulate the body and steering wheel from any road vibrations. At the rear, a clever double insulated multi-link set-up combines cornering agility and grip with a superb ability to soak up the bumps and irregularities of our far from perfect roads. Saloons and estates have self-levelling rear suspension as standard. Brakes are discs all-round, ventilated at the front, and stopping power is boosted by four-wheel ABS, linked on 3.0i models to an electronic Traction Control system.

ENVIRONMENTAL MATTERS

Vauxhall has long been in the vanguard of moves to make motoring 'greener'. The Elite follows proudly in this tradition.

Manufacturing and recycling techniques are attuned to the green '90s, and the cars themselves incorporate all the green technology available today to ensure maximum fuel efficiency and minimal exhaust pollution, low drive-by noise levels and a minimum of fuel vapour escape.



ELITE. A PERSONAL CHOICE

Vauxhall Approved dealer-fit options and accessories allow you to build still further on the Elite's truly exceptional standard equipment levels and create a luxury car perfectly suited to your needs.

Vauxhall's roof carrier system, for example, is tailor-made for transporting a wide range of sports and recreational equipment. Consisting of a base carrier of lockable roof bars, specialist attachments can be added to create a genuinely versatile system. These include an aerodynamic, lockable Sportbox and units for transporting a boat, skis, surfboard/windsurfer, bicycle or luggage.

With its power and poise – aided by the standard self-levelling rear suspension – Elite is a natural tow-car. And to let you make the most of its capabilities there's a custom-designed towbar and electrical coupling kit. The towbar itself is designed to locate on to special 'built in' mounting points.



A towing mirror is also available for optimum rearward vision. Simple to fit and remove, this is a legal requirement when towing a caravan or large trailer. All items are tested to EU safety standards.

A strong emphasis has been placed on the range of safety items available for the new car. Vauxhall Approved child seats, including the Freeway (6 months to 4½ years) and Cruiser

(6 months to 6 years), keep youngsters securely fastened in the vehicle,

while the Star-Riser booster cushion enables 4 to 11 year olds to be harnessed comfortably using Elite's standard seat belts.

Vauxhall's easy-to-fit dog guard means that the family pet can also be carried safely in the loadspace of Elite estate models. And to help cope with those unforeseen emergencies, a fire extinguisher, 5- or 10-litre spare



fuel container, spare bulb kit, first aid kit and hazard warning triangle provide peace of mind on the road.

To prevent loose items sliding around inside the luggage area, a boot storage box is available for saloons, while an anti-slip mat keeps larger objects more securely in place.

A cargo liner helps keep the load area clean when transporting dirty items, while outside, tough, stylish mudflaps help keep grit and road spray away from body panels.



team – ensuring total consistency of quality and fit. These items include front and rear skirts, side sills, boot top spoiler and a choice of two light alloy wheel styles.



Inside, a beautifully crafted **H** steering wheel, combining the



highest quality

wood and

leather, epitomises the Elite's unique blend of style and practicality. Fully tested to the

highest safety standards, it is,

of course, compatible with the standard driver's airbag.

If you're looking to add an element of personal character to your Elite, the brand new range of **H** bodystyling accessories has been developed in close co-operation with Omega's design



Indeed, all Elite dealer-fit options and accessories are designed and manufactured to the same high standards as the car itself. The 'Vauxhall Approved' label is your personal guarantee of quality and value.

For more information, visit your nearest Vauxhall dealer and ask for a free copy of the latest Vauxhall Car Range Accessories Brochure.



Leather upholstery/Heated seats



Full-size air bags



Rear passenger centre console



Rear side window de-mist vents



Electrically operated front and rear windows

SPECIFICATIONS

STANDARD AND OPTIONAL FEATURES	Elite		Elite	
	Sal	Est	Sal	Est
SAFETY				
Driver's and front passenger's full-size airbags	•	•		
Twin side impact door bars	•	•		
Front seat body-lock restraint system	•	•		
Front and outer rear seat belt web clamps	•	•		
Height adjustable inertia reel front and outer rear seat belts	•	•		
One centre static rear seat lap belt	•	•		
One centre three-point inertia reel rear seat belt	•	•		
Safety auto reverse facility for electrically operated windows/sunroof	•	•		
Anti-submergence ramps in all seats	•	•		
Front and three rear fully adjustable open type head restraints	•	•		
Laminated windscreen	•	•		
Rigid passenger safety cell and deformation zones front and rear	•	•		
Electronic anti-lock braking system (ABS)	•	•		
Plastic seamless fuel tank	•	•		
STYLING				
Body colour flush door handles and door mirror housings	•	•		
Chrome inserts to side protection mouldings and bumpers	•	•		
Body colour front and rear lower bumper mouldings and sill protection mouldings	•	•		
Dark-style tail lamps	•	•		
Twin exhaust outlets (3.0i models)	•	•		
Two-tone metallic or pearlescent paint	•	•		
LIGHTING				
Haloing headlamps with integral front turn indicators	•	•		
Lights-on warning buzzer	•	•		
Twin reversing lights and twin front and rear fog lamps	•	•		
Hazard warning lights and side repeat indicators	•	•		
Electric headlamp levelling and high pressure headlamp washers	•	•		
Kerb illumination lights in front and rear door doors	•	•		
Interior courtesy light operated by front and rear door switches	•	•		
Interior courtesy light with delay fade	•	•		
Twin adjustable front map reading lights and rear reading lights	•	•		
Illuminated glove box and load area	•	•		
MECHANICAL				
Five-speed manual gearbox	N.C.	N.C.		
Four-speed automatic transmission with adaptive shift patterns ¹ and economy, sport and winter driving modes	•	•		
Speed sensitive power assisted steering	•	•		
Traction Control (3.0i models)	•	•		
Cruise control	•	•		
Catalytic converter	•	•		
Automatic rear suspension levelling	•	•		
Tool kit	•	•		
16.5 imp. gallon (75 litre) fuel tank	•	•		
SECURITY				
Remote control central locking (doors, boot/taillgate, fuel flap) with security deadlock			•	•
Provision for outside closure of windows and sunroof			•	•
Remote control ultrasonic security alarm system			•	•
Engine Deadlock Immobiliser			•	•
HEATING AND VENTILATION				
Air blend heater with four-speed fan and illuminated controls			•	•
Cabin pollen filter and air recirculation system			•	•
Variable side-to-side cabin temperature settings			•	•
Full air conditioning (CFC-free) including glovebox			•	•
Adjustable face-level air vents and front and rear side window demist vents			•	•
Rear passenger compartment heating ducts			•	•
Centre console mounted rear passenger ventilation outlets			•	•
SEATS				
Leather seat trim			•	•
Rear window seat trim			N.C.	N.C.
Driver's seat with manual lumbar adjustment, electrical lum. adj. rails, height and tilt adjustment and three position memory (memory includes both door mirrors and photo-chronatic rear view mirror)				
Front passenger seat with manual lumbar adjustment, electrical lum. adj. rails, height and tilt adjustment			•	•
Electrically heated front and rear seats			•	•
Front seat centre armrest			•	•
Storage pockets on front seat backs			•	•
Split-folding rear seat with fold down centre armrest			•	•
Load-through facility in rear centre armrest			•	•
COMFORT AND CONVENIENCE				
Green tinted glass with windscreen shadeband			•	•
Electrically operated front and rear windows with one touch facility			•	•
Electrically operated sliding/tiltable glass sunroof with multi-position pre-set facility and interior blind			•	•
Electrically operated rear window sunblind			•	•
Telephone installation kit including roof aerial and centre console flip up telephone cover			N.C.	N.C.
Roof rails††			•	•
Heated rear window			•	•
Intermittent tailgate wash/wipe			•	•
Twin electrically adjustable heated door mirrors (wide angle on driver's side)			•	•
Heated twin jet windscreen washer nozzles			•	•
Two-speed windscreen wipers plus intermittent and flick wipe			•	•
Wood effect inserts on doors and gear lever surround			•	•
Rear passenger compartment centre console with cigar lighter			•	•
Front and rear assist handles, armrests and coat hooks			•	•



Electric sunroof



Sunroof multi-position pre-set facility



Load floor net



Rear reading light



Kerb illumination light

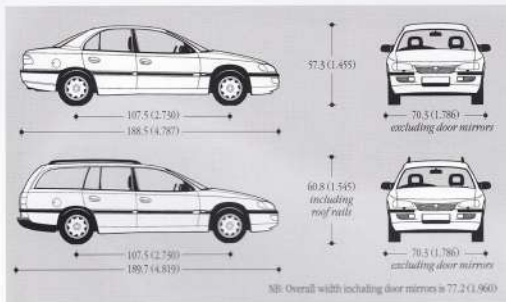
	Elite	Sal	Est
COMFORT AND CONVENIENCE (continued)			
Photo-chromatic automatic anti-dazzle rear view mirror	●	●	
Fully carpeted boot/load area with load floor net	●	●	
Retractable load compartment cover	●		
Load area floor rubbing strips and load restraining net	●		
Colour-keyed velour carpet and carpet mats	●	●	
Storage bins on rear wheel arches	●		
Spare wheel storage for tool kit	●	●	
Two-tone horn	●		

FACIA, INSTRUMENTS AND CONTROLS

Rev counter, trip odometer and instrument panel light dimmer	●	●	
Multi Function Display (MFD) incorporating digital clock, date, audio information and outside temperature	●	●	

● = Standard equipment. N/C = No cost factory fitted option. † = Load-sensing automatic transmission for improved economy and drivability. †† = Must be used with separate cross bars (available as a Vauxhall accessory) if luggage is to be carried on the roof. * = Check control warning system features engine oil level, engine oil pressure, engine coolant level, windscreen washer fluid level, front brake pad wear, bulb test for head/tail and brake lights. Trip computer incorporates functions for instantaneous fuel consumption, average fuel consumption, average speed, range (based on fuel remaining) and stop-watch.

DIMENSIONS (inches (metres))



LOAD CAPACITIES (VDA method)

litres (cu.ft.)	Seat up	Seat down
Saloon	530 (18.7)	-
Estate (to glass line)	540 (19.1)	1000 (35.3)
Estate (to roof)	965 (34.1)	1800 (64.6)

ESTATE LOAD SPACE DIMENSIONS

	(in.)	(centm.)
Maximum length - rear seat down	81.0	2057
Maximum length - rear seat up	47.6	1208
Maximum width rear floor	56.5	1434
Width between wheelarches	44.2	1125
Maximum cargo height	33.9	862

	Elite	Sal	Est
FACIA, INSTRUMENTS AND CONTROLS (continued)			
* Driver information Centre comprising Multi Function check control warning panel and trip computer	●	●	
Leather covered four-spoke steering wheel	●	●	
Leather covered gear knob and gaiter with manual gearbox	●	●	
vertical lift-knob, handbrake and gaiter with automatic transmission	●	●	
Driver's side storage box, lockable glovebox and cigar lighter	●	●	

AUDIO EQUIPMENT (see page 23 for details)

SC 804 CDC stereo radio/stereo cassette/compact disc (CD) player with remote display, six disc boot mounted autochanger and eight speakers	●	●	
Security code protection for audio equipment	●	●	
Radio data system (RDS EON) with Traffic Programme	●	●	
Rear screen aerial with signal amplifier	●	●	

BODY

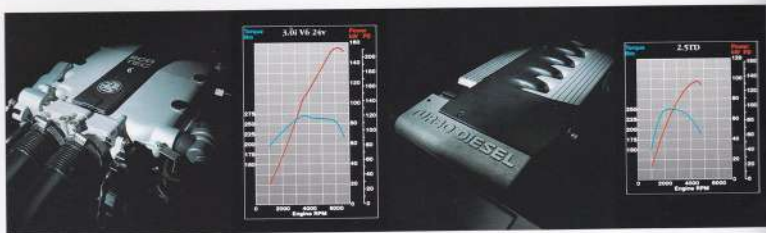
Aerodynamic drag co-efficient:
Saloon - Cd 0.29 Estate - Cd 0.32
All steel body with extensive anti-corrosion protection. Flush fitting front and rear screens and side window glass. Front and rear towing eyes. Burst-proof door locks. Child-proof locks on rear doors. Gas assisted bonnet struts. Nitrogen-filling gas assisted boot lid struts on saloon models. Tailgate assist struts on estate models. Polypropylene front and rear bumpers capable of withstanding minor impacts up to 2.5mph without permanent damage.

ANTI-CORROSION PROTECTION

Partial use of zinc-coated sheet metal, zinc phosphated bodyshell primed electrostatically (cathodic). All weld seams and joints sealed with special compound. Areas prone to stone damage on underbody coated with stone-impact primer. Anti-corrosion primers used extensively on bonnet, boot lid, tailgate, doors, wings and other panels. Paint finish applied electrostatically. PVC coating applied to wheelarches and other underbody areas. Polymer reinforced anti-corrosion wax pumped into door sills and other underbody cavities. Plastic front wheelarch liners. All Omegas carry a six-year body panel anti-perforation warranty.

INSURANCE GROUPS

2.5TD - group 14, 5.0i V6 24v - group 16.
Insurance groups as recommended by the Association of British Insurers.



ENGINES

Engine	Maximum Power	Maximum Torque	Engine Features
2.5TD 2498cc Diesel	130 PS (96kW) @ 5500rpm	184.4 lb.ft. (250Nm) @ 2200rpm	Six-cylinder unit with overhead camshaft, intercooled turbocharger and one viscous and two electric cooling fans. Bosch VP36 indirect diesel injection. Digital engine management system. Activated charcoal evaporation control canister. Ceramic monolith oxidising catalytic converter. Compression ratio 22.0:1.
3.0i V6 24v 2962cc ECOTEC-V6	210 PS (155kW) @ 6200rpm	199.2 lb.ft. (270Nm) @ 3600rpm	V6 unit with four valves per cylinder actuated by two overhead camshafts per bank, variable intake manifold, hydraulic tappets and electric cooling fan. Motronic M2.8.1 engine management system with direct ignition. Twin-jet sequential port fuel injection with knock control and air mass metering. Oil/water heat exchanger. Exhaust gas recirculation. Activated charcoal evaporation control canister. Lambda sensor and twin three-way closed loop catalytic converters. Compression ratio 10.8:1.

Please note: the 3.0i V6 24v petrol engine complies with EU '96 emission regulations and runs on unleaded fuel only.

PERFORMANCE AND FUEL ECONOMY

Model	Transmission	PERFORMANCE (manufacturer's figures)			FUEL ECONOMY mpg (litres/100km)		
		Maximum speed (mph)	Acceleration	Acceleration	Urban driving	50mph (90km/h)	75mph (120km/h)
			0-60mph (secs)	30-50mph (4th gear) (secs)			
2.5TD saloon	5-speed manual	124	11.0	9.0	51.0 (59.1)	50.4 (58.6)	37.2 (77.0)
2.5TD saloon	4-speed automatic	121	11.0	-	29.7 (75.5)	50.4 (58.6)	37.2 (77.0)
2.5TD estate	5-speed manual	121	11.0	9.5	51.0 (59.1)	47.9 (57.9)	35.3 (80.0)
2.5TD estate	4-speed automatic	118	12.0	-	28.7 (78.5)	48.7 (57.4)	35.8 (77.8)
3.0i V6 24v saloon	5-speed manual	149	8.3	8.5	52.1 (52.8)	58.2 (57.2)	32.1 (88.4)
3.0i V6 24v saloon	4-speed automatic	146	9.5	-	21.4 (73.2)	58.8 (57.2)	32.5 (87.7)
3.0i V6 24v estate	5-speed manual	144	8.8	8.8	21.6 (73.5)	57.7 (57.3)	30.4 (88.5)
3.0i V6 24v estate	4-speed automatic	141	9.8	-	20.9 (73.5)	58.2 (57.4)	30.7 (87.2)

Fuel consumption data for Vauxhall passenger cars officially certified by the United Kingdom Government as required by the Passenger Car Fuel Consumption Order 1993.

Important. The results given relate to the particular car tested, inevitably there are differences between individual cars of the same model. Driving style, road and traffic conditions, vehicle mileage and standard of maintenance may also affect fuel consumption. Therefore the results do not express or imply any guarantee of the fuel consumption attainable.

WEIGHTS AND TOWING DATA

Saloon 4-door	Kerbweight (kg.)		Gross vehicle weight (kg.)		Maximum roof rack loading (kg.)	Towing weights (kg.)		Maximum trailer noseweight load (kg.)	Maximum trailer rear overhang (metres)	Speed (mph) per 1000rpm manual transmission.		
	Man	Auto	Man	Auto		trailer with brakes	trailer without brakes			4th	5th	
2.5TD Elite	1625	1645	2125	2125	100	1750	1750	750	75	1.14	21.3	28.1
3.0i 24v Elite	1625	1665	2125	2125	100	1850	1800	750	75	1.14	19.9	24.6
Estate 5-door												
2.5TD Elite	1675	1695	2250	2250	100	1600	1600	750	75	1.17	21.3	28.1
3.0i 24v Elite	1675	1695	2250	2250	100	1700	1700	750	75	1.17	19.9	24.6

Gross vehicle weight is the total permissible weight of the vehicle including passengers and their luggage. To determine total carrying capacity, deduct kerbweight from gross vehicle weight. The maximum towing weights are based on the ability of the car - with two occupants of 70kg (150lbs) each - to re-tension on a 12% gradient, which is approximately 1 in 8 at sea level. At altitudes above 1500 metres (4921ft), the engine output may drop with a corresponding reduction in towing capability. Any extra weight, such as luggage or additional passengers, should be deducted from the maximum towing weight. With a trailer fully loaded, maximum noseweight should not exceed the figure shown. Always fit Vauxhall officially approved towing attachments and accessories available from your Vauxhall dealer. They are the only ones approved by GM for use on Vauxhall cars.

TRANSMISSIONS

Manual	Clutch Diameter	Gear Ratios	Final Drive Ratios						
			1	2	3	4	5	Rev.	
2.5TD	5-speed	228mm	3.81	2.11	1.34	1.00	0.76	3.40	3.45:1
3.0i V6 24v	5-speed	240mm	3.81	2.11	1.34	1.00	0.81	3.40	3.70:1
Automatic									
2.5TD	4-speed		2.86	1.62	1.00	0.72	-	2.00	3.45:1
3.0i V6 24v	4-speed		2.40	1.48	1.00	0.72	-	2.00	3.90:1

Hydraulic, asbestos-free single plate clutch. Five-speed gearbox available at no cost. Rear-wheel drive. Computer-controlled four-speed automatic transmission with adaptive shift patterns and economy, sport and winter driving modes standard.

SUSPENSION

Front: Independent. MacPherson struts with twin tube gas pressure damper cartridge and coil springs. Anti-roll bar. Negative scrub radius.

Rear: Independent. Multi-link rear suspension with twin tube telescopic gas pressure dampers on all models. Anti-roll bar. Automatic rear suspension levelling.

STEERING

Steer sensitive power assisted recirculating ball system. Turning circle (kerb-to-kerb) - 10.2m (33.5ft). Three turns lock-to-lock.

WHEELS AND TYRES

7j x 15 five-spoke alloy wheels with lockable centre caps 205/65 R15 low profile tyres.

NB: A 6 1/2 x 15 steel spare wheel is standard on all models.

BRAKES

Dual circuit, servo assisted (sprated servo on 3.0i and estate models). Electronic anti-lock braking system (ABS) standard on all models. Asbestos-free brake pads.

Handbrake on and low brake fluid warning lights. Brake pad wear warning light.

Rear: 11.65in. dia. ventilated disc brakes

Rear: 11.3in. dia. disc brakes.

ELECTRICS

120 amp alternator.

85Ah maintenance-free battery (2.5TD).

66Ah maintenance-free battery (3.0i V6 24v).

AUDIO

Vauxhall has a long tradition of excellence in the field of its Car Entertainment – and an enviable reputation for innovation. So it is no surprise that the new Elite offers an advanced stereo system that is at the forefront of current development – both in terms of features and security measures.

The SC 804 CDX boasts cassette player and compact disc facility – with a six disc boot mounted autochanger – as well as automatic volume control and maximum output of 20 watts per channel.

It also includes a Radio Data System facility and features a superb eight-speaker sound system that provides truly outstanding sound reproduction. The unit switches on and off automatically with the ignition and also has independent operation via the on/off volume knob. The Elite audio system is one of the best protected in any car. As well as the four-figure 'burnt-in' security code, it also has a remote audio display panel. There is no integral display on the audio unit itself, the audio information is displayed on the Multi Function Display (MFD) panel. This makes the unit virtually useless to any thief since it cannot be easily utilised in any other application. Additionally, the Elite features a rear screen aerial for increased security.

SC 804 CDC

This advanced new unit features a cassette player and compact disc facility with boot mounted autochanger as well as soft touch controls and extra power.



Features include

- Four figure security code burnt into memory chip
- Eight speakers
- Microprocessor-controlled quartz tuning
- FM, MW, LW and SW reception
- Six station preset buttons
- Radio Data System (RDS EON)
- Traffic programme
- Automatic search tuning on all wavebands
- Autotone function for FM and MW – automatically tunes and stores the six strongest available FM and MW stations ready for push button selection
- Automatic speed-related volume control
- Separate treble and bass controls
- Radio reception during list forward and rewind
- Cassette standby facility
- Cassette programme search
- Autoreverse function
- Soft touch cassette controls
- Dolby B and C noise reduction
- Compact disc player with boot mounted six disc autochanger
- CD standby facility
- CD track skip and search facility
- Maximum output 20 watts per channel

RADIO DATA SYSTEM

The Elite audio unit offers the full range of Radio Data System (RDS EON) services.

Automatic tuning

The first advantage offered by RDS is an automatic tuning system. By locking-on to an RDS station identification signal – for example BBC Radio 4 – rather than a specific frequency, RDS can search out the strongest source of that signal, then switch automatically to maintain the best reception. This avoids the need for constant re-tuning as you travel from area to area, and your listening pleasure remains unimpaired.

RDS also removes the uncertainty of tuning by displaying the RDS station names rather than just frequencies.

Traffic Programme

The second major advantage offered by RDS is the Traffic Programme, which aims to provide motorists with all the information they need about road conditions as they actually need it.

Pressing the TP button ensures that travel flashes from the closest BBC radio station are automatically broadcast – interrupting other radio programmes or even recorded music. Even with the volume control turned right down, the RDS travel flash will still be heard at a pre-determined level.

When complete, the network of BBC local radio stations will cover virtually the whole of the UK, so this invaluable service will help you get to where you're going – whatever your destination.

COLOURS AND TRIMS

Elite style is exemplified by this range of colour and trim combinations to suit a variety of preferences. Our interior trim colours are carefully selected to complement the exterior paintwork while the trim material and patterns are designed to reflect the status of the model. For exterior colour illustrations please refer to the Vauxhall Car Colours brochure. In addition, all Vauxhall dealers have a comprehensive colour and trim album with actual trim samples and highly accurate exterior colour illustrations, available for inspection.

Exterior Colours	Trim name and trim colour	
	Elite	Elite Leather
Two-coat metallic colours		
Diamond Black	Black	Black
Smoke Grey	Black	Black
Two-coat pearlescent colours		
Polar Sea Blue	Grey	Grey
Rioja	Black	Black
Satin Red	Black	Black
Velvet Green	Black	Black
Nautilus	Grey	Grey
Magic Grey	Black	Black

LEATHER



DOTS



VAUXHALL FIRST FOR CUSTOMER CARE

ELITE represents only a part of the comprehensive range of Vauxhall cars - one of the widest in the UK. And every single car comes with the reassurance of the Vauxhall Customer Care package.



VAUXHALL



Choosing a new Elite means you can enjoy the peace of mind offered by **Vauxhall Assistance**, **Vauxhall Price Protection** and **Vauxhall Security**. Order a new Vauxhall for build in the current model year (as confirmed by your dealer) and the price you are quoted is the price you pay – irrespective of any subsequent price rises between order and delivery of your new car. The only qualifications are that your order must be placed no more than three months ahead of the required delivery date and that you take delivery as soon as the car is available. Regrettably, Price Protection does not cover Government-imposed tax changes.

Vauxhall justifiably has an excellent reputation for vehicle security. However, should you be unfortunate enough to have your new Vauxhall stolen within the first 12 months of registration, simply phone Freephone Vauxhall Security – after reporting the theft to the police – and you'll be entitled to the free loan of a car, excluding fuel and insurance, for up to 7 days.

So that you can buy a Vauxhall with confidence, there's a **no-quibble Exchange Plan** on all our new cars. It's simple. Providing you've driven less than 1,000 miles, if you change your mind about your new Vauxhall within 30 days of buying it – for whatever reason – we'll be happy to change it for another new Vauxhall. The plan does not affect your statutory rights and certain exclusions apply.

To eliminate any uncertainty about 'hidden' costs when buying your new car, Vauxhall quote a recommended price for an **on-the-road package**. This includes number plates and delivery to the Vauxhall dealer and should be added to the published list price of any model to arrive at the total. Full details can be found in the Vauxhall price guide or ask your dealer.

The comprehensive Vauxhall new car warranty provides reassuring cover for the first 12 months of

ownership with no restrictive clauses on total mileage. There's further cover too with **Vauxhall's 6-year body panel anti-perforation warranty** that requires no periodic checks. Both warranties are transferable if the car is sold.

The benefits of buying Vauxhall are apparent even when the time comes to sell. With the success of **Network Q** – Vauxhall's fully-warranted pre-owned car operation – there's even more of a demand for high quality used Vauxhalls.

As part of Vauxhall's total customer care concept, our Service and Parts operations are fully integrated into one customer-focused organisation – **Vauxhall Aftersales**.

Vauxhall has one of the largest franchised dealer networks in the UK with over 500 dealerships, each one committed to providing high standards of aftersales care and support. The **Vauxhall Customer Assistance Centre** is unique in the industry, providing help and advice on a range of customer enquiries.

Vauxhall's Aftersales support also extends to a national network of **Vauxhall Approved Accident Repair Centres**. Independent assessment on a regular basis ensures that stringent operating standards are maintained and is your assurance of excellent workmanship, outstanding customer care and value for money.

MasterFit is the drive-in maintenance service for Vauxhall drivers which provides friendly convenient fitting of Vauxhall replacement parts by Vauxhall trained technicians at competitive prices. Vauxhall has a strong reputation for vehicles which have minimal routine servicing requirements to help reduce running costs. Naturally, Vauxhall replacement parts are a key element of the service provided by dealers. The Vauxhall central warehouse has an inventory of around 24 million replacement parts – all rapidly available and carrying a 12-month unlimited mileage warranty against defect.





Vauxhall Assistance

Complete peace of mind, whatever Vauxhall you drive

Vauxhall Assistance is one of the most comprehensive motoring assistance packages in the UK. It is automatically extended to every new Vauxhall car for the first 12 month warranty period.

This vehicle-based cover is designed to keep Vauxhall drivers mobile following an accident or other roadside incident. It covers almost any journey interruption, whether it is due to mechanical break-down, a flat tyre, illness while driving - or even the loss of keys. Drivers are allocated a special Vauxhall Assistance Emergency Contact Number.

Among its wide-ranging list of benefits are:

Full rescue service - includes roadside assistance round-the-clock, 365 days a year.

Recovery - if a problem cannot be solved at the roadside, or if someone is taken ill while driving, the driver, vehicle and passengers are transported to their nearest Vauxhall dealer or to any British destination.

'At home' service - if there is a vehicle problem at the driver's home, help will be sent.

Onward travel - if a vehicle is immobilised by a roadside accident, Vauxhall Assistance can help the driver (and passengers) reach their destination.

*Overnight hotel accommodation or loan car - may be provided when a vehicle is immobilised through major breakdown or accident.**

The Vauxhall Assistance package also comprises European Cover and a helpful Accident Management Service that relieves members of much of the paperwork - and a lot of the worry - that follow a road accident.

You will also be entitled to many other benefits including free technical advice on all aspects of motoring, holiday discounts, free legal advice and support, and a full European travel insurance and booking service. Ask your dealer for full details.

*Subject to certain limitations

Vauxhall Finance

No-nonsense funding from the people who understand your needs

From hire purchase to leasing, Vauxhall Finance offers a wide variety of finance packages to help you acquire a new or used vehicle through your Vauxhall dealer.

As a subsidiary of General Motors Acceptance Corporation, we are part of the largest automotive finance organisation in the world, with more than 70 years experience in automotive funding. Who better to advise you on financing your Vauxhall motoring? For further information, please contact Vauxhall Finance, Wesley House, 19 Chapel Street, Luton LU1 2SE.

Written questions on request. Security may be required.

Vauxhall Choices 1•2•3

The easy route to driving a Vauxhall

Vauxhall's Choices 1•2•3 Finance Plan gives you the buying power to obtain a new Vauxhall without the need to purchase it outright.

Simply decide which model you require, how long you'd like to keep the car under the Choices 1•2•3 plan and what mileage you think you'll cover each year. Your Vauxhall dealer will tell you the Buy Back Price which Vauxhall will guarantee** to you at the end of the agreed period, and what your instalments will be.

At the end of the agreed period you have three choices: If we agree a resale value greater than the Buy Back Price, you can apply this surplus towards another vehicle on a Choices 1•2•3 plan. Alternatively, you can buy the car outright for the agreed Buy Back Price, or hand it back in line with your Vauxhall Buy Back guarantee and walk away.** Ask your local Vauxhall dealer for full details of Choices 1•2•3. Written quotations are available on request - please write to Vauxhall Finance, Wesley House, 19 Chapel Street, Luton LU1 2SE.

**The vehicle must be returned in acceptable condition as defined in the guarantee offer, if the originally contracted mileage has been exceeded you will be required to pay an agreed excess mileage charge. Choices 1•2•3 is subject to credit approval. Security may be required.

Vauxhall Sureguard

Protection for up to 3 years beyond your first year warranty

Offering mechanical and breakdown protection for 1, 2 or 3 years beyond your first year warranty, Sureguard is the new vehicle mechanical insurance provided by Vauxhall. One of the most comprehensive policies offered by any manufacturer, Sureguard not only provides protection against the costs of mechanical failure, but also offers other benefits such as extending Vauxhall Assistance cover for the duration of the policy.

There is a range of policies to suit all types of driver. Ask your local Vauxhall dealer for more information on Sureguard - or telephone free of charge on 0800 413816.

Vauxhall Rental

Quality car rental with the accent on value

Vauxhall Rental offers an extensive range of vehicles from a network of registered dealers.

Only Vauxhall dealers offer Vauxhall Rental, so you can be confident that the vehicle you select will be clean, well prepared and maintained and offered at really competitive rates. Ring Vauxhall Rental Headquarters on 01582 861800 or 863333 for details of your nearest dealer.

Vauxhall Motability

The specialist approach to assisted mobility

People in receipt of the Higher Mobility Component of the Disability Living Allowance receive special help from Vauxhall.

Attractive preferential prices or the advantages of low cost contract hire are available on many Corsa, Astra and Cavalier models through your local Vauxhall Motability Registered Dealer. In addition, Orange Badge holders also qualify for preferential prices through our own Motability Plan.

For full details contact your local Vauxhall dealer, whose fully trained Motability staff will help you, or ring the Vauxhall Motability Helpline on 01582 861888.

Vauxhall Mastercover

Service and maintenance made easy

Mastercover is a comprehensive service and maintenance policy available on all new Vauxhalls for 2-4 years or 24,000-70,000 miles from date of first registration. The vehicle is covered for all scheduled services, including labour and parts, during the period as well as any unforeseen maintenance such as mechanical or electrical repairs, including up to 5 tyres (on 36 and 48 month policies), whilst the complete range of Vauxhall Assistance and Vauxhall Security benefits are included. Full details and a brochure are available from your local Vauxhall dealer.

Vauxhall Master Hire Leasing

The locally available contract hire service

A nationwide network of selected Vauxhall dealers provides competitively priced, service oriented car contract hire to business, professional and local authority users. And the full service is based at a nearby Vauxhall dealership.

Vehicle leasing has many advantages, not least being the reduced burdens on company finances. Call Master Hire Leasing on 01926 452557 for the location and telephone number of your nearest Master Hire Leasing dealer. Their Master Hire specialist will outline the advantages.

Vauxhall Insurance

A comprehensive plan for new and used cars

The Vauxhall Insurance Plan (VIP) is a quality policy with wide cover and many attractive features. With a VIP policy, you do not get caught out by hidden policy excesses and limitations of cover. Remember, all comprehensive policies are not the same. Features include:

Up to 65% No-Claims Bonus, transferable from your existing insurer; bonus can be protected for a small additional premium.

Introductory bonuses for ex-company car drivers.

New-for-old replacement if, in its first year of registration, the car is stolen or repairs cost more than 60% of the purchase price.

Up to 50 days free European 'Green Card' cover.

Full audio equipment cover for original factory-fit audio.

Unlimited windscreen cover - subject to a £40 excess.

Unlimited manslaughter defence costs.

Personal accident benefits up to £5000.

Personal effects covered up to £100.

Uninsured loss legal protection service - up to £50,000.

Free legal advice service.

Medical expenses up to £200.

VIP could also bring you substantial savings because, by using a specially selected panel of insurers - including Lloyds syndicates - it can offer a very competitive quotation regardless of the model or vehicle, new or pre-owned.

Ask your dealer for details of the Vauxhall Insurance Plan or ring the VIP quotation and instant cover hotline on 01705 650650.

For a brochure on any of our models, call free
on 0800 444200

From Corsa, Tigra, Astra and Astra Convertible to Cavalier, Calibra, Omega, Frontera and Monterey, Vauxhall offers a range of cars to suit all tastes, all pockets and all requirements.

The GM Card from Vauxhall

If you've got designs on a new Vauxhall - it's time to take a look at the GM Card

Switch to The GM Card and earn substantial savings towards a new Vauxhall.

If you're in the market for a new Vauxhall, it's time you considered The GM Card - available as either a MasterCard or VISA card. Because, in addition to charging no annual fee and offering an attractive APR of just 19.99%, every time you pay with the Card you get 5% back in Rebate Points to put towards a new Vauxhall. This is also over and above any Vauxhall or dealer offer.

There are three ways to save with The GM Card.


1. Earn Rebate Points worth 5% of everything you buy with the Card up to a maximum of £2,500 over five years.
2. Earn an extra 5% on Partner Points[®] when you use your Card at GM Card Partners - participating UK Esso Service Stations, Comet, Best Western Hotels and Going Places shops. There is no limit to the amount of these points you can accumulate.
3. Transfer your existing credit and store card balances and earn Rebate Points worth 5% of the total amount you transfer (up to your credit limit naturally)**.

If you choose a Vauxhall as your next company car (fully allocated), you'll receive vouchers worth the amount of points you have (less £15) to spend in a wide range of High Street stores, hotels and travel agents.

What's more, The GM Card is widely accepted. In fact, it's welcomed in over 10 million outlets worldwide. For your convenience, a free, 24 hour Customer Service Line is available every day of the year.

So apply today for the credit card that credits you with savings towards a new Vauxhall.

To apply or find out more simply **CALL FREE 0800 44 55 66** (Please quote reference F05).



*Vauxhall cannot be held liable for any loss. Written conditions available on request from The GM Card, P.O. Box 2020, Birmingham B1 7YS. Credit is available to persons aged 18 and over who reside in the UK on 21 and over in the Channel Islands and is subject to status and conditions. Credit charges and the APR may vary. The maximum purchase transaction is equal to or less than the date last referenced amount payable to your date of purchase. **Based on points on cash advances and balance transfers from date of transaction. Monthly minimum payment required is 5% of the outstanding balance (subject to the minimum £10). Rebate Points are earned on purchases using The GM Card and additional Rebate Points - Partner Points (this being the "Wholly Bonus Programme" as set out in Clause 10 of The Rebate Points Programme) - Points are earned on purchases at participating UK Esso sites (this will only include fully branded outlets), UK outlets of Going Places, Best Western Hotels and Comet (excluding outlets with the exception of the catering and pet care), Esso, Shell, and other petrol and motor parts and the sale of and/or through of tires and accessories, the sale of food and beverages, shops and currency exchange in the case of Going Places, the purchase of gift vouchers in the case of Comet, and the purchase of their travel, transport and recreation goods and services as well as other outlets on the date of Best Western Hotels; Partner Points can also be earned on Best Western conference or group bookings that are non-commercial, provided they are booked exclusively through Best Western Conference Rate Sites and guaranteed with The GM Card. You can earn up to 100 Rebate Points and unlimited Partner Points per year. Rebate Points and Partner Points are redeemable as discounts on your Vauxhall purchase and must be redeemed within 12 months of issue. The Rebate Points Programme (including Partner Points) is the sole responsibility of Vauxhall Motors Ltd, and is subject to the Rebate Points Programme Rules. The GM Card is issued by HSBC Bank plc.



Every effort has been made to ensure that the contents of this publication were accurate and up-to-date at the time of going to press (April 1995).

Vauxhall cars are equipped with components manufactured by various General Motors operating units and outside suppliers. In line with Vauxhall's policy of continuous product improvement, the company reserves the right to change specifications and make modifications to the vehicles described and illustrated at any time.

Any such modifications will be notified to Vauxhall dealers at the earliest opportunity; please consult your local dealer for the latest information.

The colours reproduced in this brochure may vary slightly from the actual paint colour or trim material due to the limitations of the printing processes. However, all Vauxhall dealers have a comprehensive colour and trim album, with highly accurate exterior colour samples and actual interior trim samples, available for customer inspection.

Please note that Vauxhall dealers are not the agents of Vauxhall Motors Limited and are not authorised to bind the company by any specific or implied undertaking or representation.

It is advisable to ensure that your motor insurance policy provides adequate cover for any additional fitted accessories.

As part of Vauxhall's philosophy of environmental care, this brochure is printed on chlorine-free paper that has been made using only specially farmed, sustainable timber resources.

All rights reserved. No part of this publication may be reproduced in any form or by any means, without the prior written permission of Vauxhall Motors Limited.

Published April, 1995 (Broadway)

Vauxhall Motors Limited, Luton LU1 3YT



VAUXHALL