

1998 MODELS EDITION NUMBER 1

FRONTERA SPORT

FROM VAUXHALL



VAUXHALL



FRONTERA SPORT

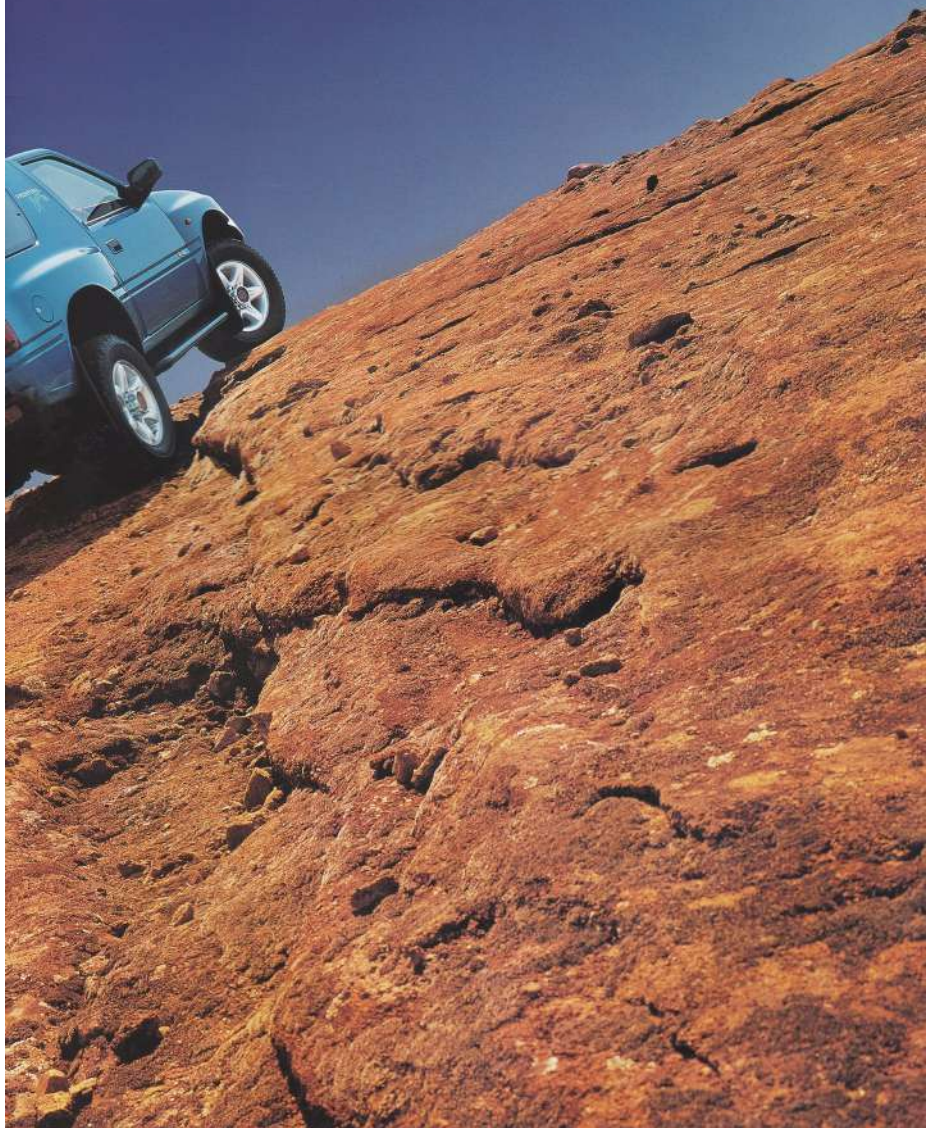
Drive a Frontera Sport and fun and excitement are never out of reach. Individuality and style are matched by versatility and value. Comfort, performance and safety go hand-in-hand. And the go-anywhere potential of four-wheel drive adds a whole new dimension to both work and play. So whatever you want to do, you can do it in a Frontera Sport.

Contents

| | |
|-------------------|----|
| Rugged Style | 4 |
| Total Control | 6 |
| Well-equipped | 8 |
| Inside Story | 10 |
| Hidden Strengths | 12 |
| Off-road | 14 |
| Personal Choice | 16 |
| Specifications | 18 |
| Freedom of Choice | 22 |
| Customer Care | 23 |
| Colours | 25 |



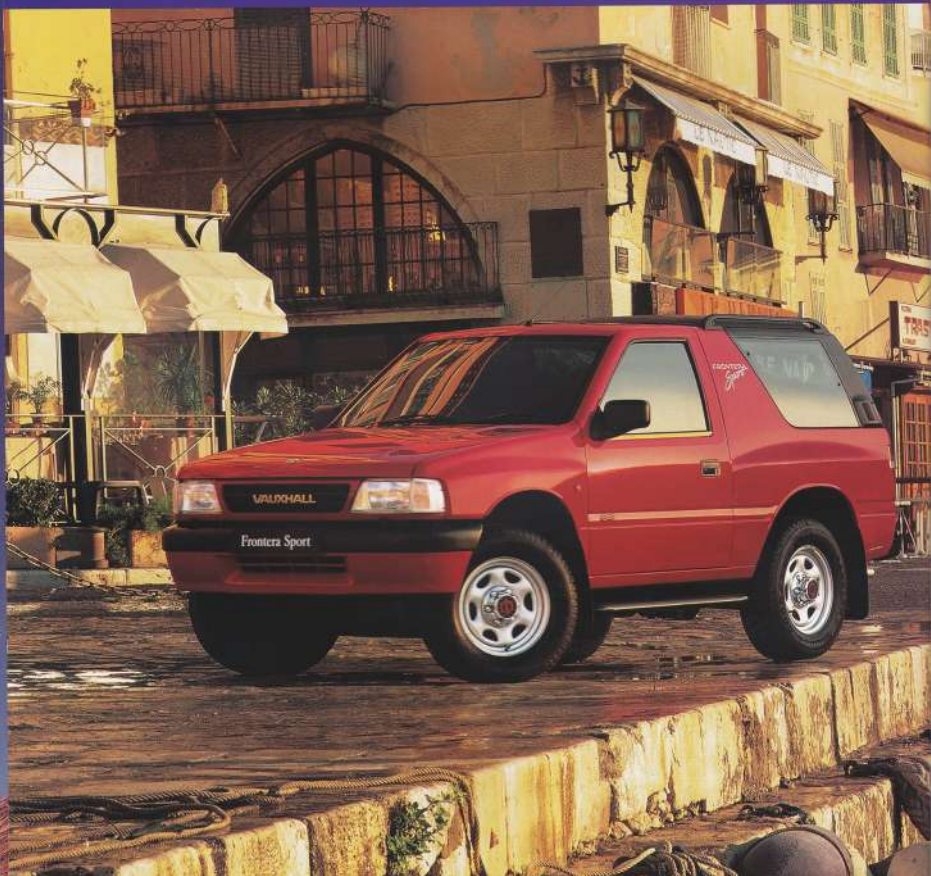
*Phosphorescent paint, roof
racks and side steps are
available at extra cost.*



Frontera Sport is the all-purpose, all-action 4x4 that can't help but get noticed. With its rugged off-road stance, versatile airtop and bright colours, it's designed for maximum impact and maximum fun on or off the road.

Yet beneath that dynamic exterior, the Sport is as tough as they come - with selectable four-wheel drive and a choice of 2.0i petrol or 2.5TDS diesel engines. No other vehicle offers such versatility, value and all-round ability. And no other does it in such style.

- Selectable four-wheel drive with high- and low-ratios
- Automatic freewheeling front hubs
- Power-assisted steering
- Electronic ABS braking system (available at extra cost)
- Airtop with removable windows
- Tinted glass
- Tiltable glass sunroof (Sport S)
- Silver-coloured spare wheel disc



Rugged Style

*Side steps, headlight
numbered and roof
racks are available
at extra cost.*



Total Control



Remote control door locking included.



For 1998, Frontera Sport gives you the convenience of remote central locking at the touch of a button. As well as activating door and tailgate locks, the radio frequency handset simultaneously operates the sophisticated security alarm, which detects movement in the vehicle. For added protection the latest electronic engine deadlock immobiliser is armed simply by removing the key from the ignition.

Frontera's practicality is carried through to the stylish interior, where the Sport's flowing body lines are echoed in the curves of the fascia with its comprehensive instrumentation and user-friendly controls.

- Remote central door locking (including tailgate)
- Electronic engine deadlock immobiliser and alarm
- Security-coded SC-303 stereo radio/cassette player with removable display and six speakers
- Leather-covered four-spoke steering wheel (Sport S)
- Lockable glovebox
- Tilttable steering column (Sport S)



Well-equipped

Two full-size airbags are available at extra cost.

Spacious, comfortable and well-equipped, the Frontera Sport interior ensures relaxed, enjoyable travel. Four adults can be carried with ease, or the whole rear seat can be folded forward for extra luggage capacity.

A commanding driving position means superb visibility. Malibu cloth seats and luxurious 'easy clean' velour carpets add distinctive style. And while high levels of safety, security, comfort and convenience are all standard, Sport S models add that extra touch of luxury.

A further array of options are available at extra cost, including twin full-size airbags for added safety and driver's seat height adjuster for optimum comfort and visibility, allowing you to tailor your Frontera to your own personal needs.

- Air-conditioning (available at extra cost on Sport S)
- Twin full-size airbags (available at extra cost)
- Reclining sports front seats with folding rear seat
- Driver's seat height adjuster (available at extra cost)
- Heated front seats (available at extra cost on Sport S)
- Front door pockets, rear stowage and tailgate net pockets
- Electrically adjustable door mirrors (Sport S)
- Electrically operated front windows (Sport S)



Inside Story

A look beneath Frontera's stylish body lines reveals its hidden strengths.

Vauxhall engineers have combined the latest technology with a tough, ladder-frame chassis and utterly dependable four-wheel drive system to allow this stylish 4x4 to tackle all terrain from town to country.

Sport's multi-functional airtop features removable roof panel, side and rear windows.

Long-range, 80-litre fuel tank with underbody protection.

A heavy gauge, box section, ladder-frame chassis provides a high level of torsional stiffness – essential for off-road driving.

Ventilated disc brakes.

Multi-link coil spring rear suspension features gas-pressure dampers and links for low-speed ride smoothness and greater axle articulation.

Optional limited-slip differential provides additional traction in treacherous off-road and wintry conditions.

Potentiometer "drive by wire" throttle (diesel).



Five-speed manual transmission has gearbox ratios optimised to match each engine's characteristics.

High- and low-ratio four-wheel drive is selected through the two-speed transfer box.

Recirculating ball power-assisted steering offers reduced kickback on rough terrain combined with excellent on-road stability.

A choice of 2.0i petrol or 2.5 turbo diesel engines ensures a power unit for every application.

Gas-pressure dampers coupled with long suspension travel ensure a smoother ride with improved control and traction over rough surfaces.

Optional anti-lock brakes (ABS) operate in both two- and four-wheel drive mode.

Front hubs engage automatically when four-wheel drive is selected. Optional manual locking front hubs are available as a no-cost option.

Sport S models are now fitted with 7J x 16 six-spoke alloy wheels (steel spare) and wide 255/65 R 16 all-weather tyres. These are optional at extra cost on Sport models which are fitted as standard with 6½J x 16 steel wheels and 235/70 R 16 all-weather tyres.

Hidden Strengths

Frontera Sport is built to take you where you want to go, when you want to go. Whatever the surface, whatever the conditions, sure-footed traction is provided by easy-to-operate four-wheel drive with selectable high- and low-ratios and freewheeling front hubs that lock automatically once four-wheel drive is engaged.

With a tough chassis, high ground clearance, strong pulling power, power-assisted steering and servo-assisted, four-wheel ventilated disc brakes, Frontera Sport is the ideal vehicle for towing and leisure activities in the great outdoors.

*Options, mpf rates and finance numbers
are available at www.vauxhall.co.uk*



Front-wheel drive
brakes provide
superb stopping
power. Optional
electronic 4H
reduces braking
distances in slippery
conditions.

Superb torque
characteristics
help the new
2.5TDS provide a
loading capability
of up to 2000kg.

The coil spring
rear suspension
provides excellent
ride articulation
and smooth on-
road performance.



New 2.5TDS turbo diesel engine

The 2.5 litre turbo diesel engine has been optimised to significantly reduce interior noise. The latest electronic diesel injection system increases power and torque for smoother throttle control and lower emissions. They combine to make the Frontera quieter and more comfortable – particularly from cold starts - and increase driver satisfaction.

Innovative technology has been applied to the electronic accelerator pedal system to boost Frontera's performance even further. The "drive by wire" throttle enhances responsiveness, putting you firmly in control both on- and off-road.

2.0i petrol engine

The 115PS 2.0i petrol engine combines exceptional torque (172Nm at 2800rpm) with lively performance and excellent fuel economy. Advanced features include Bosch Motronic M1.5.4 engine management and multi-point fuel injection. Exhaust Gas Recirculation (EGR) improves emission control, and a Direct Ignition System (DIS) provides a more consistent spark.

Selectable four-wheel drive

In 'normal' road conditions, including wet and even frosty weather, two-wheel drive (2H) should be selected, in which case Frontera's front hubs 'freewheel' to maximise fuel economy and reduce road noise and friction.

But in any situation where wheel-slip is a possibility – such as mud, sand or snow – four-wheel drive is easily engaged simply by stopping the vehicle and selecting either 4L (low-ratio) – to permit the use of effective engine braking – or 4H (high-ratio) – normally used only in wide open spaces. With four-wheel drive engaged, Frontera's front hubs lock automatically as you drive off.

Manual locking hubs can be specified at no extra cost, while a limited-slip differential is also available (at extra cost) for the ultimate in all-surface traction.

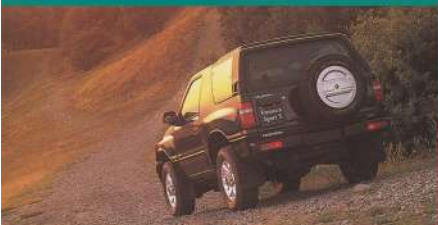
When four-wheel drive is no longer required, simply stop the vehicle, shift the transfer lever back to the 2H position and reverse for about one metre to disengage the front hubs.

Off-road

If you enjoy discovering new horizons, Frontera will really move you.

With its tough, ladder-frame chassis, superb ground clearance and remarkable torque levels, Frontera is built to cope with the sort of inhospitable conditions that leave most other cars stranded. Simply slip into four-wheel drive and let Frontera's sure-footed traction take you safely where you want to go.

To prove the point Frontera recently won gold in the first ever Panama-Alaska Rally. Not only did the Frontera 2.5TDS complete the arduous 12,000km course from the tropical rainforests of Panama to the frozen wastes of Alaska - but it romped home top of the four-wheel drive class.



And what better way to test a 4x4's staying power than pitting it against some of the toughest terrain known to man during a month-long race through nine countries? The number of competitors fell from 24 to just seven as their vehicles failed to survive the gruelling course, but Frontera never faltered, arriving in Anchorage without a hitch.

To help you appreciate Frontera's gold medal capabilities for yourself, Vauxhall offers new Frontera buyers a free off-road driving skills course.

Held at specially selected venues across the UK, this comprehensive one-day training programme guides you through the pleasures and

pitfalls of off-roading, while encouraging a greater awareness of safety and concern for the environment. A combination of theory and practice familiarises you with Frontera's latent strengths. After which you can tackle routine driving hazards with renewed confidence.

And, if after just one day off-road you find yourself hooked, you can join the action in the Vauxhall Off-Road Club. Free membership for the first 12 months, after buying a new Frontera, gives you the opportunity to enjoy a host of weekend breaks and off-road fun days.

Please call 01582 734403 for more details of both the one-day training programme and the Vauxhall Off-Road Club.



Personal Choice

Interior protection accessories include tailored floor mats, a cargo liner and practical waterproof seat covers.



Frontera accessory security equipment includes a synchro locking wheel nuts and steering wheel security bar.



Add style and protection with stainless steel lamp grilles.



A range of towing accessories includes electrical coupling kits, towing mirrors and fixed ball or detachable tow bars.



With Vauxhall accessories you can create a unique vehicle, totally in tune with your personal needs. All our accessories are designed, manufactured and tested to the same standards as the car itself. And every accessory carries the Vauxhall Approved label – your personal guarantee of quality and value.

The following are just examples of what is available for your Frontera Sport. For more details, ask your dealer for the latest Vauxhall Accessory Collection brochure.

- Roof carrier system with attachments for boat, skis, surfboard/windsurfer, bicycles or Sportbox
- Bonnet protector
- Luggage compartment mat
- Interior wood-effect trim set or leather gear knobs
- Upgraded audio equipment including CD autochanger
- Baby seat, child seat, child booster cushion
- Warning triangle, spare bulb kit, fire extinguisher, first aid kit

VAUXHALL LINE

- Wrap around plastic front style bar (illustrated below)
- Side sill and step kits (illustrated below)
- Front fog and driving lamp kits

Frontera Sport S features body colour front style bar and sidesteps together with roof rails and lockable roof bars. Shown with surfboard/windsurfer carrier.





Twin front airbags.



Heated front seats.



CFC-free air-conditioning.



Ultrasonic alarm sensor.

Specifications

Standard and optional features

Sport Sport S

| Sport | | Sport S | | |
|--|----|---------|---|---|
| Safety | | | | |
| ● | ● | ● | ● | Height-adjustable inertia-reel front seatbelts |
| ● | ● | ● | ● | Two inertia-reel rear seatbelts |
| ● | ● | ● | ● | Fully adjustable open-type front seat head restraints |
| ● | ● | ● | ● | Laminated windscreen |
| ○ | ○ | ● | ● | Driver's and front passenger's full-size airbags |
| ○* | ○† | ● | ● | Electronic anti-lock braking system (ABS) |
| Facia, instruments and controls | | | | |
| ● | ● | ● | ● | Rev counter |
| ● | ● | ● | ● | Oil pressure gauge and voltmeter |
| ● | ● | ● | ● | Four-wheel drive indicator light |
| ● | ● | ● | ● | Four-spoke steering wheel (leather-covered on Sport S) |
| ○ | ○ | ● | ● | Tiltable steering column |
| ● | ● | ● | ● | Trip odometer |
| ● | ● | ● | ● | Digital clock |
| Audio equipment | | | | |
| ● | ● | ● | ● | SC 303 stereo radio/cassette player with removable display and six speakers |
| ● | ● | ● | ● | Radio data system (RDS EON) with Traffic Programme |
| ● | ● | ● | ● | Flexible roof-mounted aerial |
| Seating and upholstery | | | | |
| ● | ● | ● | ● | Malibu cloth seat and door trim |
| ● | ● | ● | ● | Reclining sports front seats |
| ○ | ○ | ● | ● | Driver's seat height adjuster |
| ○ | ○ | ● | ● | Electrically heated front seats |
| ● | ● | ● | ● | Map pockets on front seat backs |
| ● | ● | ● | ● | Folding rear seat |
| Heating and ventilation | | | | |
| ● | ● | ● | ● | Air blend heater with four-speed fan and illuminated controls |
| ● | ● | ● | ● | Air recirculation system |
| ● | ○ | ● | ● | Full air-conditioning (CFC-free) |
| ● | ● | ● | ● | Adjustable face-level air vents and front side window demist vents |
| Interior lighting | | | | |
| ● | ● | ● | ● | Interior courtesy light operated by front door switches |
| ● | ● | ● | ● | Interior courtesy light delay cut-off |
| ● | ● | ● | ● | Twin front map lights |
| ● | ● | ● | ● | Illuminated load area |
| Additional interior features | | | | |
| ● | ● | ● | ● | Passenger assist handle |
| ● | ● | ● | ● | Front door pockets |
| ● | ● | ● | ● | Twin sun visors and front passenger's vanity mirror |
| ● | ● | ● | ● | Dipping rear-view mirror |
| ● | ● | ● | ● | Lidded storage compartment between front seats |
| ● | ● | ● | ● | Front ashtray and ashtray |
| ● | ● | ● | ● | Load-restraint lashing eyes |
| ● | ● | ● | ● | Cepelated passenger compartment and load area |
| ● | ● | ● | ● | Rear storage pockets |
| ● | ● | ● | ● | Talgate net pocket |
| Security | | | | |
| ● | ● | ● | ● | Security code protection and removable display panel for audio equipment |
| ● | ● | ● | ● | Electronic engine deadlock immobiliser |
| ● | ● | ● | ● | Radio-frequency remote control central locking (doors and talgate) |
| ● | ● | ● | ● | Locking fuel filler flap |
| ● | ● | ● | ● | Remote control ultrasonic security alarm system |
| ● | ● | ● | ● | Lockable glovebox |
| ● | ● | ● | ● | Locking nuts for alloy wheels |

Sport Sport S

| Mechanical | |
|-----------------------------------|---|
| ● ● | Five-speed manual gearbox |
| ● ● | Power-assisted steering |
| ● ● | Catalytic converter (2.0) |
| ● ● | Selectable four-wheel drive |
| ● ● | High- and low-ratio transfer box |
| ● ● | Underbody protection guards |
| ● ● | Automatic free-wheeling front hubs |
| N/C ¹ N/C ¹ | Manual locking front hubs |
| ○ ○ | Limited-slip differential (rear axle) |
| Exterior lighting | |
| ● ● | Lights-on audible warning |
| ● ● | Twin reversing lights and twin rear fog lights |
| ● ● | Hazard warning lights and side repeat indicators |
| ○ ² ○ ² | Front driving lights |
| ○ ³ ○ ³ | Front fog lights |
| ● ● | Electric headlight beam leveling |
| Wheels and tyres | |
| ● | 6 1/2 J x 16 steel wheels and 235/70 R 16 all-weather tyres |
| ○ | 7 J x 16 alloy wheels (steel spare) with locking wheel nuts and 235/70 R 16 all-weather tyres |
| ○ ● | 7 J x 15 alloy wheels (steel spare) with locking wheel nuts and 255/65 R 16 all-weather tyres |
| Exterior and convenience features | |
| ● ● | Green-tinted glass |
| ● ● | Removable airtop |
| ● ● | Removable rear window and rear side windows |
| EP ● | Electrically operated front windows |
| EP ● | Twin electrically adjustable/heated door mirrors |
| ○ ● | Tiltable glass sunroof |
| ● ● | Twin-air windshield wiper nozzles |
| ● ● | Two-speed windshield wipers plus intermittent wipe |
| ● ● | Intermittent rear window wash/wipe |
| ● ● | Heated rear window |
| ○ ○ | High pressure headlight washers |
| ○ ⁴ ○ ⁴ | Roof rails |
| ○ ○ | Fixed tow bar |
| ○ ⁵ ○ ⁵ | A-line plastic front style bar |
| ○ ○ | Stowsteps (black) |
| ● ● | Rear door-mounted exterior spare wheel with centre disc |
| ○ ⁶ | Body-colour hard spare wheel cover |
| ● ● | Front and rear formed mudflaps |
| ○ ○ | Two-coat metallic paint |
| ○ ○ | Two-coat pearlescent paint |

● = Standard equipment

○ = Optional at extra cost.

N/C = No-cost option.

1 = ABS not available with manual locking front hubs.

2 = Available only in conjunction with extra-cost option A-line plastic front style bar.

3 = Available only in conjunction with extra-cost option A-line plastic front style bar and matching fog light pods.

4 = Roof rails must be used with separate crossbars (available as a Vauxhall accessory) if luggage is to be carried on the roof.

5 = A-line plastic front style bar available in black, metallic or pearlescent paint only.

6 = Optional with metallic or pearlescent paint colours only.

Special extra-cost option pack

EP = Electric Pack: Electrically operated front windows and twin electrically adjustable/heated door mirrors, plus a lidded storage compartment between the front seats.



Front electric windows.



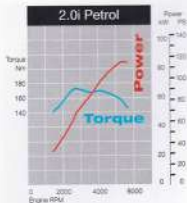
A-line plastic front style bar with driving lights, fog lights and fog light pods.



Electrically adjustable/heated mirrors.



Tiltable glass sunroof.



Engines

2.0i Petrol

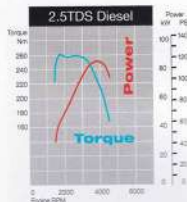
Capacity: 1999cc.
Max. power: 115PS (85kW) @ 5200rpm.
Max. torque: 172Nm (128.0 lb.ft.) @ 2900rpm.
Compression ratio: 10.0:1.

Configuration: Four-cylinder, eight-valve unit with overhead camshaft, alloy cylinder head, hydraulic tappets and electric cooling fan. **Engine management:** Bosch Motronic M1.5.4 system. Computer controlled multi-point fuel injection, DIS ignition system with dual spark coil and selective knock control. **Emission control:** cooler. Maintenance-free poly-vee ancillary drive belt. **Thermostatically controlled of cooler.** Maintenance-free poly-vee ancillary drive belt. **Thermostatically controlled:** Electronically controlled exhaust gas recirculation. Secondary air injection. Activated charcoal evaporation control catalyst. Lambda sensor and three-way closed-loop catalytic converter. Unleaded petrol only.

2.5TDS Diesel

Capacity: 2499cc.
Max. power: 115PS (85kW) @ 3600rpm.
Max. torque: 260Nm (191.8 lb.ft.) @ 1800rpm.
Compression ratio: 21.0:1.

Configuration: Four-cylinder, eight-valve unit with intercooled turbocharger, hydraulic tappets and viscous cooling fan. Thermostatically and pressure controlled oil cooler. Maintenance-free poly-vee ancillary drive belt. **Engine management:** Bosch VIEL. 655 electronic indirect diesel injection. **Emission control:** Exhaust gas recirculation.



Performance (manufacturer's figures)

| Model | Maximum speed (mph) | Acceleration 0-60mph (secs) | Acceleration | | Maximum gradeability* | |
|--------|---------------------|-----------------------------|----------------------------|------------|-----------------------|--|
| | | | 30-60mph (4th gear) (secs) | High ratio | Low ratio | |
| 2.0i | 96 | 14.5 | 11.3 | 47% | 80% | |
| 2.5TDS | 96 | 14.8 | 8.7 | 49% | 80% | |

*Gradeability figures are theoretical for vehicles in standard condition at full Gross Vehicle Weight, for guidance only. Actual gradeability will depend on tyre to surface adhesion.

Fuel economy mpg (litres/100km)

| Model | Urban driving | Extra urban driving | EC directive 93/116 | | CO ₂ emissions (g/km) |
|---------------|---------------|---------------------|---------------------|----------------------------------|----------------------------------|
| | | | Combined figure | CO ₂ emissions (g/km) | |
| 2.0i manual | 18.2 (15.5) | 25.4 (9.9) | 23.9 (11.8) | | 279 |
| 2.5TDS manual | 22.1 (12.8) | 33.6 (8.4) | 28.2 (10.0) | | 266 |

The fuel consumption figures shown comply with EC directive 93/116 to provide a realistic indication of fuel consumption by taking into account everyday driving conditions, such as cold starts, acceleration, braking and even differences in the weight of models with the same engine. Important: The results given relate to the particular car tested; therefore there are differences between individual cars of the same model. In addition, some cars may incorporate particular modifications. Driving style, road and traffic conditions, vehicle usage and standard of maintenance may also affect fuel consumption; therefore the results do not express or imply any guarantee of the fuel consumption attainable.

Transmission ratios

| Model | Clutch diameter | 1 | Gear ratios (mph/1000rpm - high-ratio) | | | | | Rev. | Transfer box ratios | | Final drive ratio |
|----------------|-----------------|-------------|--|--------------|--------------|--------------|--------|--------|---------------------|--------|-------------------|
| | | | 2 | 3 | 4 | 5 | High | | Low | | |
| 2.0i 5-speed | 216mm | 3.79:1(4.3) | 2.17:1(7.5) | 1.41:1(11.6) | 1.00:1(16.3) | 0.86:1(18.9) | 3.72:1 | 1.00:1 | 1.87:1 | 5.33:1 | |
| 2.5TDS 5-speed | 241mm | 3.77:1(6.2) | 2.25:1(8.6) | 1.40:1(13.9) | 1.00:1(19.4) | 0.81:1(24.0) | 3.87:1 | 1.00:1 | 2.05:1 | 4.00:1 | |

Weights and towing data

| Model | Kerbweight (kg) | Gross vehicle weight (kg) | Maximum towing weights (kg) | | | |
|----------------|-----------------|---------------------------|-----------------------------|------------------------|--------------------|--------------------|
| | | | Trailer with brakes | Trailer without brakes | Trailer noseweight | Trailer noseweight |
| 2.0i Sport | 1700 | 2200 | 2000 | 750 | 75 | |
| 2.5TDS Sport | 1852 | 2510 | 2000 | 750 | 75 | |
| 2.0i Sport S | 1702 | 2200 | 2000 | 750 | 75 | |
| 2.5TDS Sport S | 1834 | 2510 | 2000 | 750 | 75 | |

Gross vehicle weight is the total permissible weight of the vehicle including passengers and their luggage. To determine total carrying capacity, deduct kerbweight from gross vehicle weight. The maximum roof rack loading should not exceed a total of 50kg. The maximum load limit is valid for surfaced roads. In off-road conditions the maximum should be reduced to 30kg. The maximum towing weights are based on the ability of the car - with two occupants of 70kg each - to maintain on a 12% gradient, which is approximately 1 in 8.3 at sea level. At gradients above 10% metres, the engine output may drop with a corresponding reduction in towing capacity. Any extra weight, such as luggage or additional passengers, should be deducted from the maximum towing weight. Always fit suitable towing attachments and accessories available from your Vauxhall dealer. They are designed specifically for Vauxhall models and carry a 12 month guarantee.

Engine availability and insurance groups

| Engine | Sport | Sport S |
|---------------|--------|---------|
| 2.0i manual | ● (10) | ● (10) |
| 2.5TDS manual | ● (10) | ● (10) |

Figures in brackets indicate insurance group as recommended by the Association of British Insurers.

Transmissions

- High- and low-ratio transfer box
- Rear-wheel drive in high-ratio only
- Selectable four-wheel drive in high- and low-ratios
- Automatic telescoping front hubs
- Manual locking front hubs optional at no cost
- Limited-slip differential (rear axle) optional at extra cost

Five-speed manual gearbox: Standard on all models.

Mechanical, asbestos-free single plate clutch.

Fuel tank capacity

- 80 litres (17.8 gallons)

Brakes

Front ventilated disc brakes: 280mm diameter.

Rear ventilated disc brakes: 313mm diameter.

- Dual circuit, servo-assisted system
- Electronic anti-lock braking system (ABS) optional at extra cost
- Asbestos-free brake pads
- Handbrake-on and low brake fluid warning lights
- Front and rear brake pad wear audible warning device

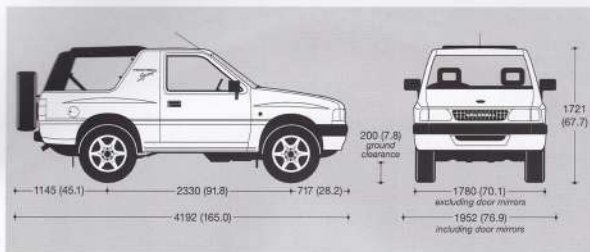
Suspension

Front: Independent, double wishbone, longitudinal torsion bar spring. Twin-tube gas-pressure dampers. Anti-roll bar.
Rear: Multi-link rear suspension with tapered, progressive rate coil springs and progressive rate bump stops. Twin-tube gas-pressure dampers. Anti-roll bar.

Steering

- Power-assisted recirculating ball system
- Turning circle (kerb-to-kerb): 10.76m (35.3ft.)
- Turns lock-to-lock: 3.2

Exterior dimensions millimetres (inches)



Loadspace dimensions millimetres (inches)

| | |
|---------------------------------|-------------|
| Maximum length - rear seat down | 1033 (40.7) |
| Maximum length - rear seat up | 603 (23.7) |
| Width between wheel arches | 967 (38.8) |
| Height from load floor to roof | 968 (38.3) |

Load capacities (VDA method)

| | Rear seat up litres (cu.ft) | Rear seat down litres (cu.ft) |
|---------------|--------------------------------|----------------------------------|
| To glass line | 300 (10.6) | 620 (21.9) |
| To roof | 420 (14.8) | 1160 (41.0) |

Electrics

Alternator: 2.0 - 100 amp (120 amp with air-conditioning), 2.5TDS - 80 amp

Low maintenance battery: 2.0 - 80Ah, 2.5TDS - 15Ah

Body

- Extensive anti-corrosion protection
- Separate ladder-type chassis frame
- Underbody protection equipment includes: front skid plate, sump guard, transfer box guard and fuel tank guard
- Removable airtop roof panel, rear side windows and rear window
- Flush-fitting door and tailgate handles
- Offside hinged rear door
- Back bumpers with integrated body-colour front spoiler
- Spare wheel mounted on rear door

Anti-corrosion protection

- Partial use of zinc-coated sheet metal
- Zinc phosphated bodysteel primed electrostatically (cathodic)
- All weld seams and joints sealed with special compound
- Paint finish applied electrostatically
- PVC coating applied to wheel arches and other underbody areas
- Anti-corrosion wax pumped into doors, sills and other underbody cavities
- Plastic front wheel arch liners
- Mufflers front and rear
- All Frontiers carry a six-year body panel anti-perforation warranty



Maximum recommended wading depth at 3mph



Maximum departure, ramp and approach angles when off-roading



The safe maximum angle of tilt



Underbody protection



Alloy wheels with locking nuts



Ventilated disc brakes



Spare wheel centre disc

Audio

Equipped to take full advantage of the new RDS technology, this unit also offers an autoreverse cassette player with Dolby B noise reduction and cassette programme search.



SC 303

General features

- Four-figure security code
- Removable display for added security
- Fader and balance controls
- Separate treble and bass controls
- Maximum output seven watts per channel

Tuner features

- Microprocessor-controlled quartz tuning
- FM, MW and LW reception
- Radio Data System (RDS EON)
- Traffic Programme
- Six station preset buttons
- Automatic search tuning on all wavebands
- Autostore function for FM and MW

Cassette player features

- Autoreverse function
- Cassette programme search
- Dolby B noise reduction
- Fast forward and fast reverse wind
- Cassette standby facility
- Radio reception during fast forward and rewind

Freedom of Choice

Fun and freedom are never far away with a Frontera Sport. When you want to feel the wind in your hair or the sun on your face simply remove the unique airtop, or just its side and rear windows, for total versatility.



Colours and Trim

Stylish Malibu cloth seats trimmed with black complement whichever one of the exciting range of body colours you choose.

Due to the limitations of the printing process the colours and trims illustrated may vary from the actual paint colour or trim material.

However, all Vauxhall dealers have a comprehensive colour and trim display, with actual exterior paint and interior trim samples, available for inspection.

| | All models Malibu cloth |
|--|----------------------------|
| Solid colours | Trim colour |
| Glacier White | Black |
| Atlantis Blue | Black |
| Flame Red | Black |
| Apple Green | Black |
| Two-coat metallic colour (at extra cost) | |
| Diamond Black | Black |
| Two-coat pearlescent colours (at extra cost) | |
| Polar Sea Blue | Black |
| Velvet Green | Black |
| Chianti Red | Black |
| Arden Blue | Black |
| Titanium | Black |
| Brocade Yellow | Black |



The Vauxhall Experience

When you order a new Vauxhall, you're buying not just the car but a unique package of benefits we call the Vauxhall Experience. The package is designed to take care of your motoring needs until you buy your next Vauxhall. Here is a handy overview.

Immediate peace of mind

Choose Vauxhall and you have the confidence of knowing we'll do everything possible to give you peace of mind motoring. That's why every new Vauxhall comes with a 12-month warranty, providing comprehensive cover, no matter how many miles you've driven. There's also Vauxhall's body panel anti-perforation warranty, offering six years' full cover. Both warranties are transferable if you sell the vehicle.

We have also reduced the worry of becoming stranded following a roadside incident or emergency – indeed all new Vauxhalls come with 12 months' Vauxhall Assistance, including rescue and recovery plus a home call-out service.

No hidden extras

Even while you're deciding about your choice of new model, Vauxhall eliminates the traditional uncertainty surrounding 'hidden purchase costs' by publishing a 'delivered total' price. This includes the cost of number plates and delivery to your Vauxhall dealer. Full details are listed in the latest Vauxhall Price Guide. Please note that the delivered total price excludes road fund licence, fuel and insurance.

Having ordered your new Vauxhall for build in the current model year (as confirmed by your dealer), you can relax in the knowledge that the price you're quoted will be the price you'll eventually pay, irrespective of any increases that may occur prior to delivery. We simply ask that you place your order no more than three months ahead of the required delivery date and pick up your new Vauxhall as soon as it becomes available. Understandably, this does not include Government tax charges.

At your convenience

When it comes to continuing service, it's worth remembering that there are around 500 Vauxhall dealers across the UK from the

Shetland Isles to Cornwall, so the dedicated support of a Vauxhall specialist is always close at hand. Naturally, quality Vauxhall replacement parts are an essential part of the process. Vauxhall's UK-based central parts facility is one of the most sophisticated in the industry, supplying regular, frequent deliveries, with every part carrying a 12-month unlimited mileage warranty against defect.

Of course, whether we're talking about servicing, repairs, a new set of tyres or an exhaust, we recognise that flexibility and convenience are key. That's why many of our dealers now offer a Vauxhall MasterFit Centre, providing a new kind of service which is geared exclusively to the needs of the Vauxhall driver. Vauxhall MasterFit offers while-you-wait or book in advance servicing and repairs at competitive prices, with hours to suit busy people. You can discuss the work being carried out with the technician, if desired, and work will not be commenced without your approval. You also have the confidence of knowing we use only Vauxhall parts fitted by Vauxhall trained technicians.

Should you be unlucky enough to be involved in an accident, just one phone call to Vauxhall Accident Support will relieve you of the hassle. Our national network of Vauxhall Approved Accident Repair Centres are independently assessed on a regular basis to ensure that the stringent operating standards are maintained. They also offer the highest levels of workmanship.

And finally...

Last but not least, the advantages of buying Vauxhall are even apparent when you come to trade in your car. Indeed, with the success of Network Q in offering a range of fully-warranted used vehicles, each one subject to a comprehensive, 114-point service, there is sure to be a good demand for high quality used Vauxhalls.

Vauxhall Assistance

Vauxhall Assistance is provided automatically with every new Vauxhall for the first 12-month warranty period and covers everything from accidents, mechanical breakdown and flat tyres to illness while driving – even lost keys. With Vauxhall Assistance help is literally just a free* phone call away, 24 hours a day, 365 days a year! (*mobile phone users will be charged at their standard tariff).

Benefits include:

- Full rescue service including roadside assistance
- Recovery – if a problem cannot be solved at the roadside, or if someone is taken ill while driving, the driver, vehicle and all passengers will be transported to the nearest Vauxhall dealer or to any single UK destination
- 'At home' service – help will be sent if there is a vehicle problem at the driver's home
- Accident assistance – if your vehicle is immobilised by an accident, both the vehicle and occupants will be recovered to your choice of destination (Vauxhall recommend a Vauxhall Approved Accident Repair Centre, where appropriate)
- Vehicle theft – certain benefits also apply should your vehicle be stolen

For full details of benefits and conditions please see the Vauxhall Assistance glovebox booklet.

Finance

Acquiring a car will probably involve one of the largest financial outlays you'll ever make, so it's good to know Vauxhall Finance is committed to making the process of buying or leasing as painless as possible. With more than 75 years' experience, the company offers one of the UK's most comprehensive and competitive ranges of finance plans, with something to suit everyone from private motorists to the self-employed, partnerships, limited companies and small and large fleet owners.

Ownership plans (i.e. those where you gain ultimate ownership of the vehicle at the end of the contract) include hire purchase, lease purchase and Choices 1•2•3. Usmanship plans (i.e. those where you effectively lease the vehicle) include Evolution personal leasing and, for business users, Smartlease and Master Hire Leasing.

Your dealer will explain how each plan works and outline their relative benefits. Alternatively, you can obtain a written quotation by contacting Vauxhall Finance, Wesley House, 19 Clapnet Street, Luton LU1 2SE. Security may be required.

Fleet Support Services

At Vauxhall we recognise the special needs of the company car sector. That's why we provide a dedicated support service for fleet managers. For more information on issues like whole-life costs, company vehicle taxation, leasing, demonstrators or finance call us direct on 01582 426600.

Sureguard

Offering mechanical and electrical breakdown protection for one, two or three years beyond your first year warranty, Sureguard is the new vehicle mechanical warranty available from Vauxhall. One of the most comprehensive warranties offered by any manufacturer, Sureguard not only provides protection against the costs of mechanical and electrical failure, but also offers other benefits such as extending Vauxhall Assistance cover for the duration of the warranty.

There is a warranty to suit every Vauxhall model, depending on the engine size and the period of cover required. And you can pay for Sureguard at the same time that you pay for your new car, thereby building the cost of the warranty into the overall finance agreement for your car. Speak to your Vauxhall dealer or call *Freefone* 0800 413816.

Insurance

If you think all comprehensive insurance policies are the same, spare five minutes to consider a Vauxhall Insurance policy. Available for both new and used cars, Vauxhall Insurance policies provide a high level of cover, regardless of model.

Vauxhall Insurance policies are available to suit every type of Vauxhall driver – indeed, Vauxhall Insurance makes it a rule never to refuse a quote. And with full access to a specially selected panel of insurers, a Vauxhall Insurance policy can save you money, too.

It is worth speaking to us, even if you have an existing insurance policy. So for instant cover or a quotation call 01705 650850.

Motability

Vauxhall offers special help to all those receiving the Higher Mobility Component of the Disability Living Allowance. The service includes preferential prices and special access to low cost contract hire. Orange Badge holders also qualify for attractive terms through our own Mobility Plan. For full details contact your local Vauxhall Motability dealer or ring the Vauxhall Motability Helpline on 01582 861888.

Tax Free Sales

Vauxhall Tax Free Sales offers a specialist service for diplomatic staff and members of the armed forces serving or being posted overseas. This includes a network of dealers in the UK, access to five NAAFI car showrooms situated in Germany and a Vauxhall dealer in Roermond, Holland. Call our UK number, 01582 864410, for more details.

Car & Van Rental

Whether you're hiring a van to assist with a house move, renting a larger car to accommodate the family holiday or simply treating yourself to a weekend away, Vauxhall Car and Van Rental has a model to suit your needs. Only Vauxhall dealers offer this service, so you can be sure that the vehicle you get will be well maintained and made available at a very competitive price. Call 01582 861800 for the details of your nearest dealer.



From Corsa, Tigra, Astra, Astra Convertible and Vectra to Calibra, Omega, Elise, Sintra, Frontera and Monterey, Vauxhall offers a range of cars to suit all tastes, all pockets and all requirements.

For a brochure on any of our models, call

Lo-call 0345 400800

www.vauxhall.co.uk



It swipes pounds off a new Vauxhall

Start using a GM Card and we could be paying hundreds or even thousands of pounds towards your next Vauxhall.

How does it work? Simple.

Every time you use your GM Card you're credited with 5% worth of your purchase price in Rebate Points. Then later, when you buy your new Vauxhall, every Rebate Point you've earned will give you a £1 saving on the cost of your new Vauxhall, up to a limit of £2500.

What's more, if you use your GM Card at one of our GM Card Partners – Axis, Best Western Hotels or Going Places shops – you accumulate a further 5% worth of Points, known as Partner Points, with no upper limit. Together these give you a potential return of 6% on your GM Card purchases. And you still get the benefit of any other offers from Vauxhall or your local dealer at the time you buy your car.

In addition, the GM Card itself has no annual fee and an attractive APR of 20.99%. It's available as either Visa or MasterCard, which means it's welcomed at over 15 million outlets worldwide, providing superb flexibility and convenience.

So there's every reason in the world to switch to a GM Card. And the sooner you do, the sooner you start cutting the price of your next Vauxhall.

For more information, or to request an application form, please call us on 0345 GM APPS (Lo-call 0345 46 27 77), quoting 002.



*Written quotation of our credit terms available on request from The GM Card, P.O. Box 3015, Birmingham B1 2DQ. Credit is available to persons aged 18 and over and resident in the UK for 21 and over in the Channel Islands and is subject to status and conditions. APR of 20.99% for purchases and Balance Transfers. A handling fee of 1.5% (or minimum £1.50) will be made on the amount of each Cash Advance other than Balance Transfers. APR of 22.99% for Cash Advances other than Balance Transfers. Credit charges and the APRs may vary. No interest on purchases if balance is paid in full by due date, otherwise interest payable from date of purchase. Interest payable on Cash Advances and Balance Transfers from date of transaction. Monthly minimum payment required is 3% of the outstanding balance (minimum £5.00) or the balance if less. Rebate Points are earned on purchases using the GM Card. Additionally, Partner Points are earned on purchases at the UK outlets of Going Places (except for Travelers Cheques and currency exchanges), UK Best Western Hotels (excluding hotels in Northern Ireland and except for Pleasure Cruises and vacations) and cash withdrawals, but excluding non-commercially conducted or group bookings when booked centrally through Best Western Conference Sales Office and guaranteed with The GM Card) and also outlets in the UK, France, Germany, Italy, Spain, Morocco and Sweden. You can earn up to 2500 Rebate Points, and unused Partner Points which are redeemable as discounts on new Vauxhall vehicles and must be redeemed within five years of issue. Rebate Points are not earned on Balance Transfers and other Cash Advances. Rebate Points may not be redeemed by Mobility Contract Hire customers. The Rebate Points Programme (including Partner Points) is the sole responsibility of Vauxhall Motors Ltd, and is subject to the Rebate Points Programme Rules. The GM Card is issued by HFC Bank plc. Registered office: South Street, Warrick, Warrick, Warwickshire CV34 4JG. Registered in England 1117905. Details above correct at time of going to press.

Colours

Fromira Sport style is exemplified by this choice of exterior colours. Two-coat metallic and pearlescents are available at extra cost on all models.

General Motors has invested hundreds of millions of pounds in its European paint plant technology in recent years, not only bringing exceptionally high standards of exterior finish but also putting them among the most environmentally friendly paint facilities in the world.

Solid colours achieve their shine through a gloss contained within the paint resin, whilst two-coat metallic and pearlescent colours rely upon

thousands of tiny particles suspended within the basecoat to produce their distinctive finishes. Aluminium particles create the effect of constantly changing shades in metallic colours, whereas mica particles in pearlescent colours produce a shimmering iridescence and create the illusion of constantly changing colour. Two-coat colours are protected and enhanced by a coat of clear lacquer.

This application of the latest in paint plant technology helps maintain the 'new car' look for longer as well as enhancing overall durability.

Two-coat Pearlescent



Polar Sea Blue



Velvet Green



Chianti Red



Arcan Blue



Titanium



Brocade Yellow

Solid



Glacier White



Atlantis Blue



Flame Red



Apple Green

Two-coat Metallic



Diamond Black

Every effort has been made to ensure that the contents of this publication were accurate and up-to-date at the time of going to press (September 1997).

Vauxhall cars are equipped with components manufactured by various General Motors operating units and outside suppliers. In line with Vauxhall's policy of continuous product improvement, the company reserves the right to change specifications and make modifications to the vehicles described and illustrated at any time.

Any such modifications will be notified to Vauxhall dealers at the earliest opportunity; please consult your local dealer for the latest information.

The colours reproduced in this brochure may vary slightly from the actual paint colour or trim material due to the limitations of the printing process.

Please note that Vauxhall dealers are not the agents of Vauxhall Motors Limited and are not authorised to bind the company by any specific or implied undertaking or representation.

It is advisable to ensure that your motor insurance policy provides adequate cover for additional fitted accessories.

As part of Vauxhall's philosophy of environmental care, this brochure is printed on chlorine-free paper that has been made using only specially farmed, sustainable timber resources.

All rights reserved. No part of this publication may be reproduced in any form or by any means, without the prior written permission of Vauxhall Motors Limited.

Published September 1997 (GH)

DEALER

Vauxhall Motors Limited, Luton LU1 3YT
www.vauxhall.co.uk

V10308



VAUXHALL



FRANCE 98
WORLD CUP

OFFICIAL SPONSOR