

ALL-NEW
VAUXHALL

CAVALIER



Edition No.3.1982



Cavalier.

A new dimension in power, economy and value.

A medium size car credited with over 46 miles to the gallon at a steady 56 mph has to be out of the ordinary.

The new Vauxhall Cavalier is such a car. The two body styles – Saloon and Hatchback – have supremely efficient aerodynamic shapes to score wind-cheating gains in performance and economy.

Interior space and comfort for five is out of all proportion to the Cavalier's overall size. Luggage space too, is exceptionally generous.

Front wheel drive emphasises the new Cavalier's total modernity, coupled with the choice of two advanced power units, including a 1600 that represents a milestone in engine technology for the power it develops and the economy it delivers.

In fact, there's a lot of advanced engineering in the Cavalier design. Meeting the engineering challenge of today to produce more fuel-efficient cars involves not only engine design but opens up new avenues of exploration in aerodynamics, weight saving and overall mechanical efficiency. Being backed by the immense resources of General Motors and the Company's countless advanced technology programmes, the new Cavalier is able to introduce an entirely new set of values for

medium-sized European cars. It's also one of the reasons why the Cavalier offers so much choice. It may be the traditional virtues of the Saloon that appeal, or the fast lines of the Hatchback.

If sporty appearance is your style, the SR version of the Saloon or Hatch is for you, with its highly distinctive equipment and finish.

This catalogue will help you choose which Cavalier is right for you. Then drive a Cavalier to confirm that you're behind the wheel of one of Europe's best engineered cars.





Please note: headlamp wash/wipe illustrated is an extra cost option.

Style with efficiency.

The style is distinctive. It's also highly efficient, having been developed in wind tunnels to slip through the air with the minimum of resistance.

As a result, the new Cavalier Saloon has a drag co-efficient of only 0.39 when the current average for European saloons is 0.44. And the Hatch is even lower with 0.38!

In practical terms, it means you get a whole package of bonuses. You'll be impressed by the quietness, the smooth power, the limpet-like road-holding and the infrequent stops to 'fill-up'.

Equally, you'll wonder how so much space has been created in a car so sensibly sized. The Cavalier seats five comfortably and it can teach others a thing or two about luggage space. It's hard to visualise 18.0 cu.ft. of boot until you've loaded up and still have room to spare.

Part of the answer is space-creating front wheel drive – more of the total length of the car can be given over to extra space inside – where it matters.

Practical

The Cavalier positively bristles with practical features of the sort that add to the pleasures of driving and ownership. There's the deep front air spoiler effectively promoting superb roadholding; steel beam wrap-around bumpers with clip-on thermoplast covers to minimise unsightly scuffing from accidental knocks, with the same going for the deep body side protection mouldings.

Powerful halogen headlamps of a size usually found only on much larger cars take the strain out of night driving. Extra deep screens and side windows, plus slim pillars, take the guesswork out of reversing and parking. Even those well raked front screen pillars are designed to counteract turbulence and cut down on dirt accumulating on the side windows in bad weather. The large, ribbed covers on the rear light clusters do a similar job to keep your rear lighting extra bright.



Please note: the passenger door mirror shown on the car illustrated is a Vauxhall accessory.



Space, comfort, luxury and refinement.

Room. The sort of room and comfort you expect. Now it's here, together with an exceptionally fine level of finish and appointments.

When you step inside through the wide-opening doors, you'll note how the space-creating possibilities of front wheel drive have been fully exploited.

Comfort

Full foam seats moulded for comfort and support and trimmed in hard wearing, crease-resistant luxury cloths, are complemented by

colour-keyed carpets giving a soft feel underfoot.

The reclining front seats have 5.7in of fore and aft adjustment and all models have head restraints.

Rear passengers aren't forgotten either. Recessed backs on the front seats provide much-appreciated extra knee room for extra comfort.

A handy centre console and tray, plus a driver's door pocket, take all those 'wanted on journey' items. And although the levels of trim and features vary from model to model, every Cavalier is well insulated from noise to make the going quiet.

Whilst pampering passengers with its comfort

and refinement, the Cavalier is unashamedly a driver's car. The cockpit style, curved instrument panel is to a new design and presents controls and instruments in a totally logical pattern, all easily read and instantly reached. On the move, and regardless of outside weather conditions, the sophisticated heating and ventilation system will cope with your every demand. It's so efficient that air inside the car can be changed completely every four minutes.

From the highly affordable Cavalier to the top of the range Cavalier GLS, your choice will represent a standard of motoring refinement that's hard to beat.



Cavalier

1300S 2/4 door Saloon 1600S 4-door Saloon

When you look over the car badged 'Cavalier' it's hard to appreciate that this model is the price leader of the Cavalier range.

Tweed cloth upholstery, front head restraints and infinitely adjustable reclining seat backs and inertia reel belts are standard.

And this Cavalier scores with extra refinements of the sort usually reserved for more expensive models. Swivelling twin sun visors, dipping rear view mirror, illuminated heater controls, boot mat, assist handles with coathooks, intermittent wiper action, locking petrol cap, reverse lights and body side protection mouldings are among the many refinements. And with either engine you can opt for automatic transmission.



Interior trim may vary slightly from that illustrated.



Cavalier L

1300S/1600S 4-door Saloon, 5-door Hatch

If the Cavalier appears refined by ordinary standards, the Cavalier L is certainly a notch up the scale on its rivals.

Donegal Tweed cloth upholstery sets the interior style, complemented by deep, loop-pile carpeting. Saloons even have the boot side panels carpeted. On the Hatch, wheelhousings, rear side panels and load deck, are also carpeted.

The closed-type front head restraints are adjustable for height and tilt angle.

Built in twin speakers on the fascia enhance the sound quality of the push-button radio. There are other nice touches too, like the quartz-activated clock, an illuminated cigar lighter, glove locker and boot.



Interior trim may vary slightly from that illustrated.

Cavalier GL

1300S/1600S 4-door Saloon, 5-door Hatch

If you like your motoring overlaid with a lot of extra luxury and refinement, the Cavalier GL is the car that embodies it all. Beautifully.

To complement the extra visual distinction of the GL, inside there's the luxurious appearance and feel of Velour cloth upholstery, Velour carpets and doors – with continental-style front armrests – also trimmed in cloth. To guard against kick marks the lower door sections are carpeted.

The 4-spoke steering wheel fronts a comprehensive array of instruments which feature a rev. counter, voltmeter and oil pressure gauge.

Extensive sound insulation, including an under-bonnet sound-absorbing mat, ensures that already low noise levels are even further subdued.



Please note: the passenger door mirror shown on the car illustrated is a Vauxhall accessory.



Cavalier SR

1600S 4-door Saloon 1600S 5-door Hatch

The Cavalier SR 1600S has been specially developed for those who like their motoring with extra panache.

And it's an eye-stopper of a car with its two-tone paint scheme, SR striping and rear spoiler. Always the complementary second colour is 2-coat Anthracite Metallic, with the Anthracite colour extended to key mouldings. Sports alloy 5½ x 14 road wheels are standard, shod with wide 195/60 low profile radials. Inside, body-hugging Recaro seats are upholstered in Highland Check cloth. There's a host of comfort and convenience features such as push-button radio, continental-style front armrests and driver's and passenger's door pockets plus full instrumentation ahead of the 3-spoke steering wheel.



Interior trim may vary slightly from that illustrated.

Cavalier GLS

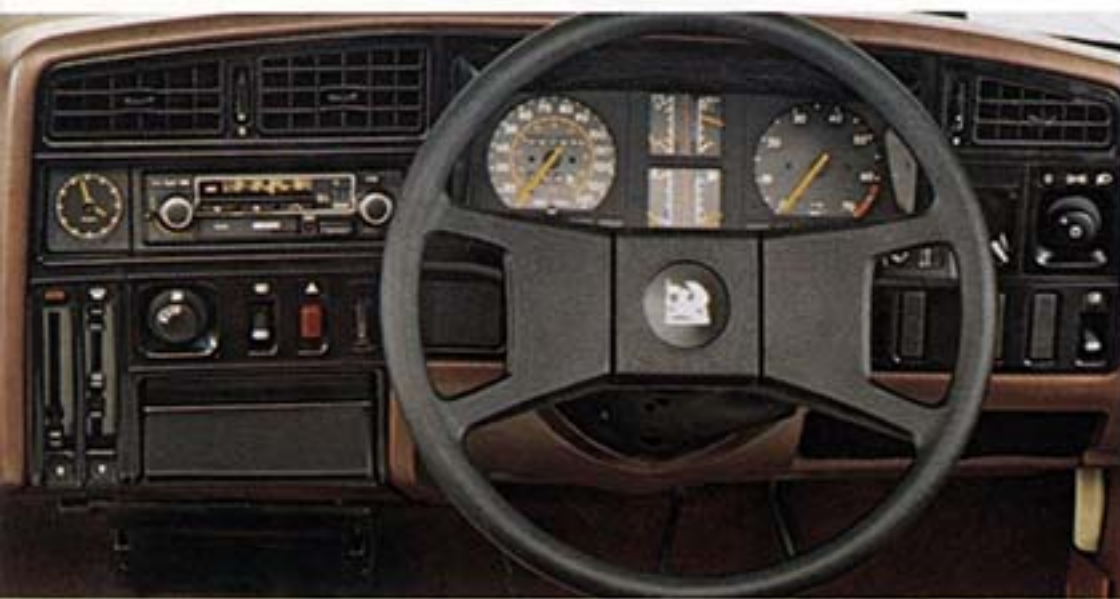
1600S 4-door Saloon 1600S 5-door Hatch

Cavalier GLS is the ultimate Cavalier, with all the luxury refinements you're ever likely to need.

There's a sliding steel sunroof for fine-weather motoring and when it's extra bright, you'll appreciate the bronze-tinted glass all round plus a shade band at the top of the laminated front screen. A remote control passenger door mirror is also standard.

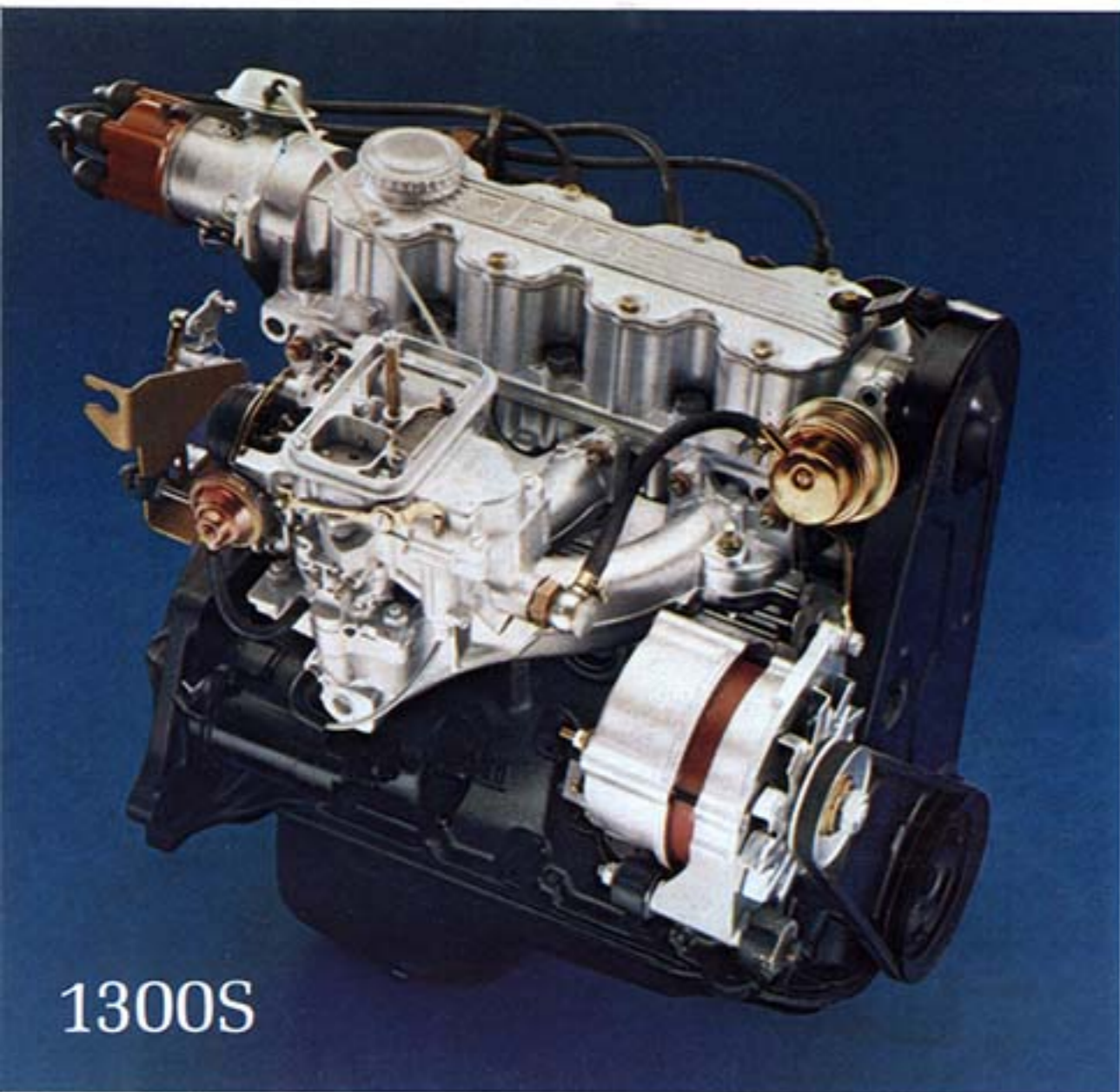
Patterned light alloy road wheels, together with a colour-contrasting coach line just below the glass level, accentuate the top-of-the-range image.

The interior too, is all that you would expect of a top luxury car. Upholstery and equipment is to the same high standard of the GL, with the addition of a mono radio incorporating a stereo cassette with four speakers.

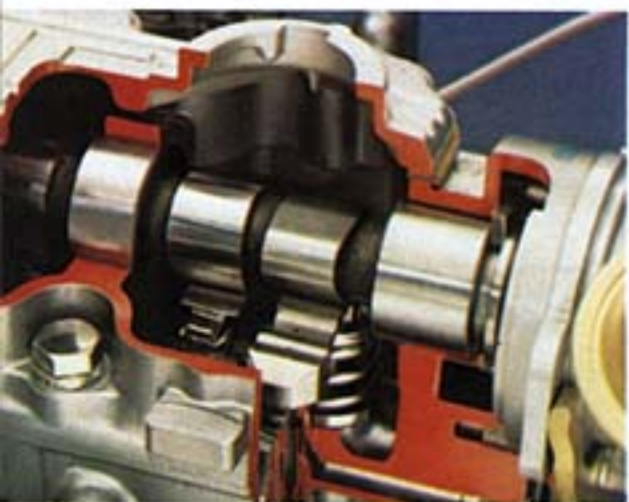




Cavalier. In the mainstream of advanced engineering.



1300S



Hydraulic tappets automatically regulate valve clearances. No adjustment is ever necessary.



The overhead camshaft is driven by a hard-wearing toothed belt. It's silent, needs no lubrication and adjustment is easy.

Modern Vauxhalls have an enviable reputation for the way they perform, not only in terms of sheer 'go', but also for their tautness and response on the road. If you haven't driven a Vauxhall recently, the new Cavalier sums it all up: crisp and well balanced.

The front wheel drive/transverse engine layout not only gives this latest Vauxhall the edge on spaciousness – it also helps to raise the standards of roadholding for medium sized cars.

Uncomplicated, robust and reliable, the Cavalier's fwd even saves on maintenance. If ever necessary, even the clutch can be replaced without removing the engine and the same goes for the transmission and differential.

When it comes to power, there's the choice of two technically advanced engines. Both are overhead cam designs featuring hydraulic tappets that never need adjustment and alloy cross-flow cylinder heads for maximum efficiency and lower pollutant levels. And both are special in the way they deliver power with remarkable economy.

Power

Where out and out performance isn't the main consideration, the free-revving 1300S will be the logical choice. Developing a lusty 75Hp @ 5800rpm, it can punch the Cavalier well into the upper 90's where speed limits allow.

What's more, with 74.5 lb/ft of torque at 3800rpm, the flexibility of the 1300S means less gear changing. Motorway cruising is effortless. And in addition to the economy of first cost, the Cavalier 1300S owner gains with £-saving mpg.

As on the 1600S the cooling system is sealed, so there are no problems with boiling and permanent anti-freeze protects in winter. An electric cooling fan cuts in automatically to ensure that the engine runs at the most efficient temperature.

As a measure of what General Motors' engineering means in practical terms, there's no

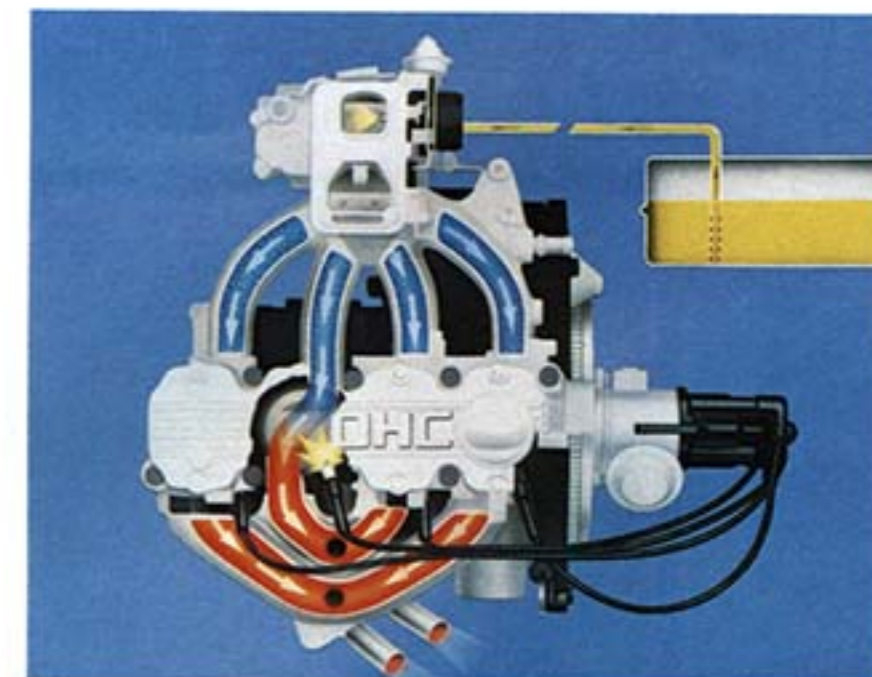
finer example than the all-new 1600S power unit.

This is the engine that points the way to the future. It produces 90Hp – as much as some 2.0 litre engines – and fuel economy figures to shame many 1300's!

Many features, of course, combine to produce such remarkable economy. There's the alloy cross-flow cylinder head with the hot exhaust side kept well away from the intake side to convert petrol into power more efficiently. The electronic ignition is factory-adjusted and ignition timing remains constant to help fuel economy. Hydraulic tappets keep valve timing 'spot-on' and also contribute to low noise levels at high revs.

Strength

Compared with its predecessor, the new 1600S shows a weight saving of 18 per cent with a 20 per cent performance gain. For great strength and quiet running there's an extra deep, rigid cast iron cylinder block and five-bearing crankshaft with no less than eight counterweights to soak up the rotating forces. Even piston and main bearing clearances are 'paired' through selective assembly to damp down noise.



On the cross-flow cylinder head, fuel/air is drawn in on one side and expelled on the other for maximum efficiency.

A torsional vibration damper at the free crankshaft end further improves smooth running.

The 1300S 4-speed manual transmission has already proved itself over millions of miles and comfortably transmits the high torque and lusty power of the ohc 1300.

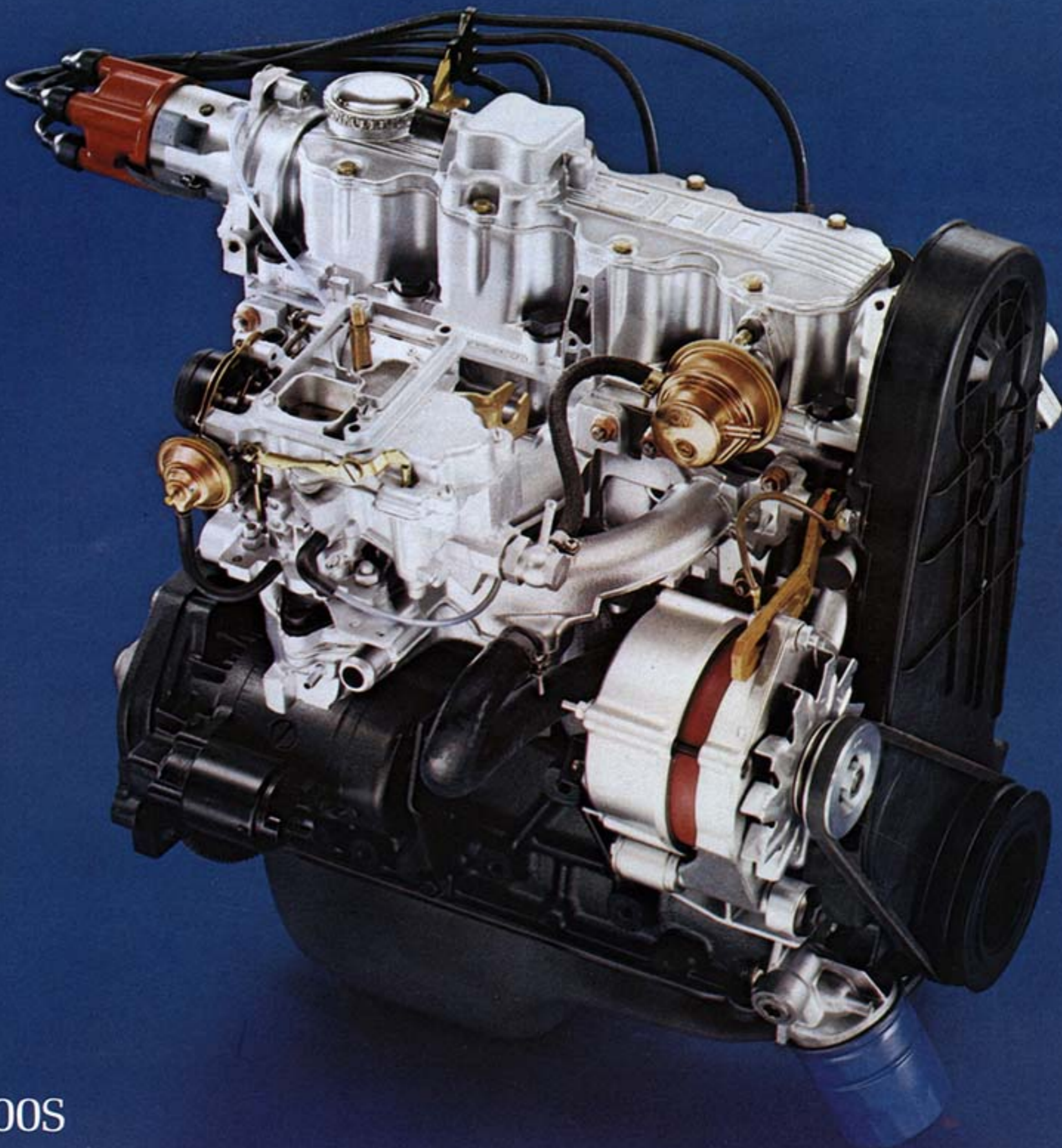
The extra-powerful torque of the new ohc 1600S, though, called for a completely new transmission.

Broadly based on that of the 1300s, it is designed to cope with all the extra power produced by the 1600S engine.

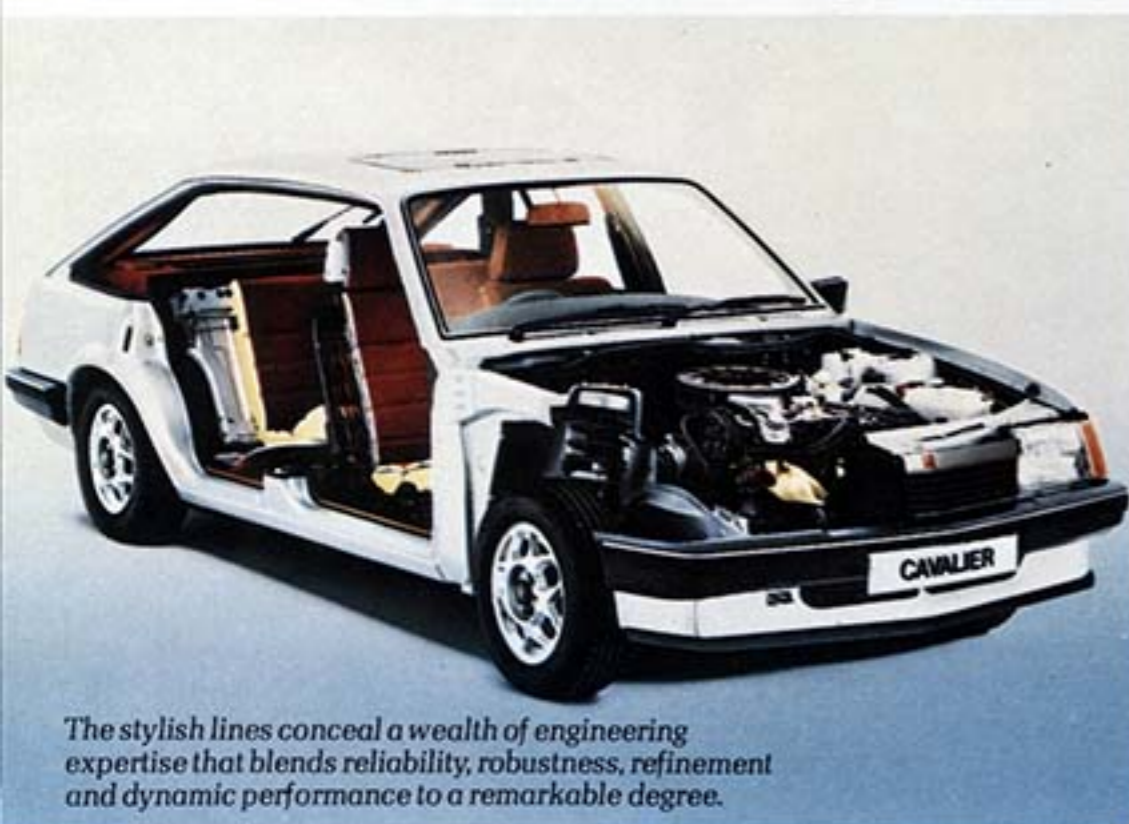
It incorporates special oil ducts to counteract heat build-up in the transmission shafts, which have needle bearings to ensure super slick gear changes.

Other features – also shared with the 1300S – include a direct single-rod shift mechanism for positive action, gear ratios optimally tuned to the engines and effective suppression of torsional movements of the power plants.

The newly-developed 3-speed GM automatic transmission available on both 1300S and 1600S Cavaliers has an outstandingly smooth change action. A precision-matched torque converter and new vane-type oil pump ensure particularly high



1600S



The stylish lines conceal a wealth of engineering expertise that blends reliability, robustness, refinement and dynamic performance to a remarkable degree.

efficiency with a sharp narrowing of the differences in mpg between manual and automatic transmission.

If advance-design engines focus attention on new standards of fuel economy, much of the credit is also due to space-age techniques employed for the body design. The Cavalier shows valuable weight savings without any loss of structural rigidity or component strengths.

On the road, you're immediately aware of the Cavalier's tautness. Front wheel drive's potential for improved roadholding is exploited by the sophisticated suspension – MacPherson strut at the front and Miniblock tapered springs at the rear. It's a combination that produces roadholding and ride qualities way above the norm for family cars.

Thanks to its special design, the service-free rack and pinion steering is beautifully light, precise, and has a steering geometry that ensures good straight ahead stability.

High performance calls for highly efficient brakes. The Cavalier's servo-assisted system – front discs and rear drums – provides reassuring stopping power with light pedal pressures. Being diagonally split, in the unlikely event of one circuit failing, the other still functions.

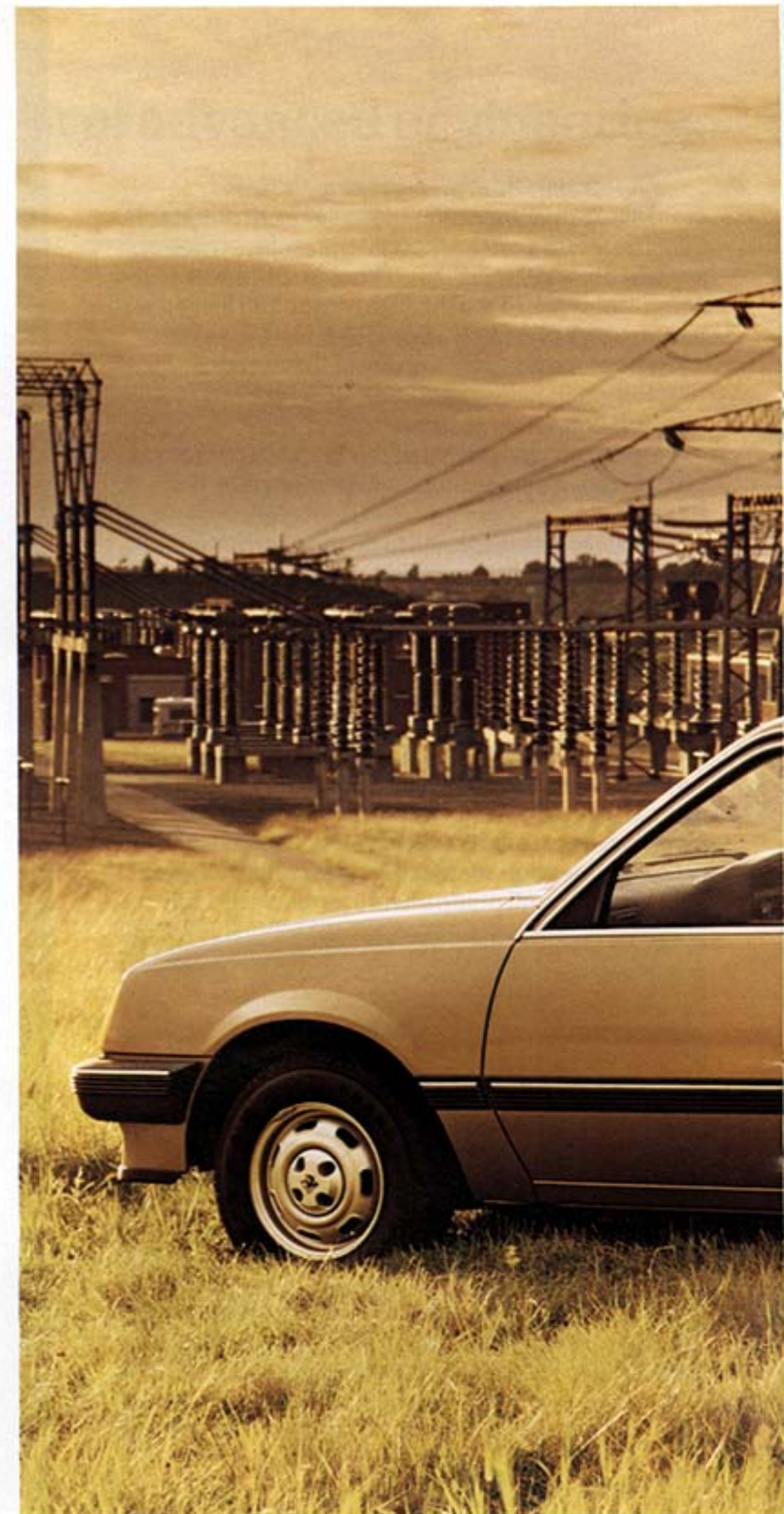
If ever you need the spare wheel, it's stowed in an underfloor recess together with the tools in a foam-lined, rattle-free compartment. For extra safety, the 13.4 gallon fuel tank is located ahead of the rear axle.

The all-steel body has front and rear crumple zones to give controlled deformation rates under impact; also locks and hinges form a safety barrier in the event of side impact.

Throughout, the Cavalier receives one of the most thorough anti-corrosion treatments ever applied to cars and with a superb final paint finish.

Extensively tested in the extremes of Arctic cold and Mediterranean heat, the Cavalier's all-round durability ensures enduring value-for-money.

Please note: the passenger door mirror shown on the Cavalier GL in Reed Green is a Vauxhall accessory.





GM automatic transmission.

Driving with GM automatic is so smooth. And quiet changes up and down are virtually imperceptible. Driving is utterly tireless. It's easier on your car too.

Because of GM automatic's ultra smoothness, no shocks are transmitted to the engine or transmission, and there are no worries about clutch wear and adjustment.

Being automatically in the correct gear for any given road speed or condition, the engine is never slogged or raced. Which saves wear and tear on the engine and produces the most efficient use of fuel.

For fully automatic driving, you need only move the selector twice regardless of how distant your journey - once to engage D-drive and finally, N-neutral or P-park. For safety, Park and Neutral are the only selector positions which permit the engine to be started.

GM automatic gives you complete command. With the full-manual over-ride feature, you can make lightning-fast clutchless changes, or select and hold a lower gear when negotiating long descents.

When you need an extra spurt of acceleration, by squeezing the throttle pedal to the floor the GM automatic's 'kick-down' comes in extra fast.

The 3-speed automatic specially developed for the Cavalier's 1300S and 1600S engines is a particularly compact design. Its high efficiency ensures that the differences in mpg between manual and automatic transmissions is greatly reduced.

DoT Fuel Consumption Tests

| | Mpg (Litres/100Km) | | |
|--------------------|--------------------|----------------|------------|
| | Simulated | Constant Speed | |
| | Urban | 56 mph | 75 mph |
| | Driving | (90Km/h) | (120Km/h) |
| Cavalier 1300S (M) | 28,8 (9,8) | 42,8 (6,6) | 32,1 (8,8) |
| Cavalier 1300S (A) | 29,1 (9,7) | 41,5 (6,8) | 31,4 (9,0) |
| Cavalier 1600S (M) | 29,4 (9,6) | 46,3 (6,1) | 35,3 (8,0) |
| Cavalier 1600S (A) | 28,5 (9,9) | 42,2 (6,7) | 32,5 (8,7) |

(M = Manual transmission. A = Automatic transmission.)

Specification

Engines:

'1300S' 1297cc ohc 4-cylinder. Hp (DIN) 75.0 @ 5800 rpm. Torque (max) 74.5 lb/ft @ 3800 rpm.

'1600S' 1598cc ohc 4-cylinder. Hp (DIN) 90.0 @ 5800 rpm. Torque (max) 93.0 lb/ft @ 3800 rpm.

Both engines feature: alloy cross-flow cylinder head, hydraulic tappets, automatic choke, electric fan, Varajet II carburettor.

Compression ratio 9.2:1. (4-star fuel). '1600S': Electronic transistorised breakerless ignition with Hall transmitter.

Transmission:

Mechanical clutch. 4-speed all-synchromesh gearbox. Front wheel drive. Final drive ratios: 1300S manual - 4.18; 1600S manual - 3.74; 1300S automatic - 3.74; 1600S automatic - 3.33. GM 3-speed automatic transmission optional at extra cost.

Gear ratios

| | Manual | | Automatic |
|----------|---------|---------|------------------|
| | '1300S' | '1600S' | |
| 1st gear | 3,636 | 3,545 | P-park |
| 2nd gear | 2,211 | 2,158 | R-2.07 |
| 3rd gear | 1,429 | 1,370 | N-neutral |
| 4th gear | 0,969 | 0,971 | D-2.84/1.60/1.00 |
| Reverse | 3,182 | 3,333 | 2-2.84/1.60 |
| | | | 1-2.84 |

Suspension:

Independent front, with MacPherson struts and heavy duty rubber bearings. Separate shock absorber cartridge. Anti-roll bar. Compound crank rear suspension. Miniblock springs with progressive rate. Telescopic shock absorbers mounted upright close to wheels. Anti-roll bar on '1600S'. Uprated struts and shock absorbers on SR.

Brakes:

Dual circuit, diagonally split. Servo-assisted. 9.3 in dia floating caliper discs at front, 7.9 in dia drums at rear. Pressure conscious reducing valve. Handbrake-on and fluid loss warning light.

Steering:

Dampened rack & pinion. Energy absorbing steering column. 33.1 ft turning circle.

Wheels/tyres:

5½ x 13 steel wheels, 155SR radials on Cavalier.

5½ x 13 steel wheels, 165SR radials on Cavalier L.

5½ x 13 steel wheels; wheel trim rings; 165SR radials on Cavalier GL.

5½ x 13 alloy wheels, 165SR radials on Cavalier GLS.

5½ x 14 sports alloy wheels, 195/60 HR low profile radials on Cavalier SR.

Electrics:

12 volt negative earth system. 45 amp alternator.

Fuel capacity:

13.4 Imperial gallons (61 litres). Fuel system accepts fuel with up to 6 per cent methanol content.

Load capacities:

Saloon: 18.0 cu.ft. boot. Hatchback total load capacity: 42.9 cu.ft. Volume beneath rear cover: 15.7 cu.ft. Volume up to glass line with rear seat down: 27.9 cu.ft.

Colours and Trims

| | Cavalier | L | GL & GLS |
|------------------------|--------------------|----------------------|----------------------|
| Exterior colour | Tweed cloth | Donegal Tweed | Dapple Velour |
| Polar White | Red | Red | Red |
| Henna Red | Red | Red | Red |
| Royal Red | Beige | Beige | Beige |
| Ember Red | Beige | Beige | Beige |
| Jamaica Yellow | Beige | Beige | Beige |
| Reed Green | Beige | Green | Green |
| Light Grey | Grey | Grey | Grey |
| Smoke Blue | Grey | Grey | Grey |
| *Silver Metallic | Red | Red | Red |
| *Dove Blue Metallic | Grey | Grey | Grey |
| *Antique Gold Metallic | Beige | Beige | Beige |
| *Silver Green Metallic | Beige | Green | Green |

*Metallic paint finish optional at extra cost.

For additional information, please refer to separate Colour & Trim leaflet.

SR. 2-tone exterior colour

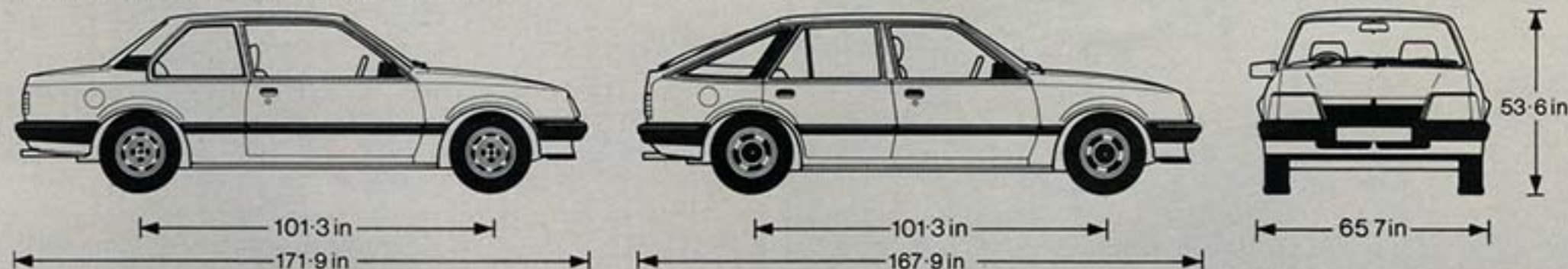
| | Highland Check |
|---|----------------|
| Polar White/Anthracite Metallic | Beige |
| Light Grey/Anthracite Metallic | Black |
| †White Gold Metallic/Anthracite Metallic | Beige |
| †Astro Silver Metallic/Anthracite Metallic | Black |
| †Carnelian Red Metallic/Anthracite Metallic | Beige |
| †Opal Green Metallic/Anthracite Metallic | Beige |
| †Aquamarine Blue Metallic/Anthracite Metallic | Black |
| †Two-coat metallic paint finish optional at extra cost. | |

| Weights | Kerb weight | | GVW | |
|---------------------|-------------|------|------|------|
| | (M) | (A) | (M) | (A) |
| | lbs | lbs | lbs | lbs |
| 2-dr 1300S | 2028 | 2105 | 3131 | 3219 |
| 4-dr 1300S | 2072 | 2149 | 3186 | 3274 |
| 4-dr 1600S | 2183 | 2249 | 3307 | 3373 |
| 4-dr 1300S L/GL | 2116 | 2194 | 3186 | 3274 |
| 4-dr 1600S L/GL/GLS | 2227 | 2293 | 3307 | 3373 |
| 4-dr 1600S SR | 2315 | 2381 | 3307 | 3373 |
| 5-dr 1300S L/GL | 2172 | 2249 | 3241 | 3329 |
| 5-dr 1600S L/GL/GLS | 2282 | 2348 | 3362 | 3428 |
| 5-dr 1600S SR | 2370 | 2436 | 3362 | 3428 |

(M = Manual transmission, A = Automatic transmission.)

Gross vehicle weight is the total permissible weight of the vehicle including passengers to the designated seating capacity, and their luggage. To determine total carrying capacity, deduct kerb weight from gross vehicle weight.

Roof rack, maximum load: 176 lb evenly distributed.



Cavalier range - equipment

Cavalier

Interior. Tweed cloth trim. Reclining front seats. Height-adjustable see-through head restraints. Front inertia reel seat belts. Provision for rear seat belts. Colour keyed carpet. Boot mat. Sound insulation. Front & rear door armrests. Driver's door pocket. Front & rear assist handles with rear coathooks. 2-spoke steering wheel. Central console & tray. Gear lever gaiter. Rubber-covered throttle pedal. Twin swivelling sun visors. Vanity mirror. Front & rear ashtrays. Dipping rear view mirror. Single key operated locks & ignition. Childproof rear door locks. Ignition steering column lock. Internal bonnet lock. Colour keyed instrument panel. Glove locker with lid & compartment. 2-speed wipers with intermittent wipe. Electric screenwash. Stalk control for headlamp dip/flash and turn indicators. Interior light. Front door courtesy switches. Air blend heater with 3-speed blower fan. Illuminated heater controls. Side window demist vents. Adjustable face level air vents. Rear extractor vents. Illuminated switches. Instrument console incorporating trip speedo; fuel & water temperature gauges; warning lights for alternator, oil pressure, main beam and direction indicators, handbrake-on and brake fluid loss.

Exterior. Comprehensive anti-corrosion protection. Deep front air spoiler. Thermoplast-covered bumpers. Body side protection mouldings. Halogen headlamps. Heated rear window. Driver's door mirror. Black door handles. Hazard warning flashers. Rear fog guard lamp. Reverse lights. Lockable fuel cap. Bright surround to front/rear screens. Cavalier boot badge.

Cavalier L. As for Cavalier plus:

Interior. Donegal Tweed cloth trim. Front seat head restraints, fully upholstered and adjustable for height and angle. Colour-keyed loop pile carpet. Push-button radio. Additional sound insulation. Additional colour-keyed trim. Passenger's door pocket. 2-spoke de luxe steering wheel. Illuminated cigar lighter. Illuminated glove locker. Boot lamp. Quartz clock. Carpeted load cover (hatchback). Load area lamp (hatchback). Carpet-covered boot side panels. Carpet-covered wheelhousings (hatchback). Carpeted rear side panels (hatchback).

Exterior. Extra brightwork. Retracting aerial. Remote control driver's door mirror. L boot/tailgate badge.

Cavalier GL. As for Cavalier L plus:

Interior. Dapple Velour cloth trim. Velour-covered front seat head restraints. Colour-keyed Velour carpet. Carpeted rear shelf (saloon). Boot - complete carpeting (saloon). Continental front door armrests. Cloth door trim. Carpeted lower door trim. Additional colour-keyed trim. Full instrumentation with additional rev. counter, voltmeter, oil pressure gauge. 4-spoke soft-feel steering wheel. Additional sound insulation. Headlamps-on warning buzzer. Engine compartment lamp. Underbonnet insulating mat.

Exterior. Tailgate wash/wipe (hatchback). Wheel trim rings. GL Boot/tailgate badge.

Cavalier GLS. As for Cavalier GL plus:

Interior. Mono radio/stereo cassette player with 4 built-in speakers and balance control. **Exterior.** Sliding steel sun roof. Tinted glass all round with laminated screen & tinted shade band. Remote control passenger door mirror. Side repeater flashers. Colour contrasting accent stripe. GLS Boot/tailgate badge.

Cavalier SR. As for Cavalier plus:

Interior. Recaro reclining front seats. Closed-type front head restraints. Highland Check cloth seat trim. 3-spoke sports steering wheel. Loop pile carpet. Revised door trim with continental-style front armrests. Passenger door pocket. Push-button radio. Quartz-activated clock. Illuminated cigar lighter. Boot lamp (saloon). Load area lamp (hatchback). Illuminated glove box. Extra instrumentation including rev. counter, voltmeter, oil pressure gauge.

Exterior. Two-tone paintwork in selected body colours. Complementary second colour in Anthracite 2-coat metallic. Anthracite-coloured mouldings. SR striping. Remote control driver's door mirror. Retracting aerial. Rear spoiler. Tailgate wash/wipe (hatchback). SR Boot/tailgate badge.

Options

An attractive range of options, plus specially-developed accessories, enable the Cavalier owner to equip his car exactly to his or her liking.

For instance there's a choice of sun roofs – the transparent, removable type shown in the illustration below or the sliding, steel-type that can be adjusted to any desired opening along its



length of travel.

The headlamp wash/wipe system is a useful driving aid by maintaining headlamp brightness in the worst of weather. To ensure the best possible sound quality, optional radios with stereo cassette players include four speakers and a balance control.

| Option | Cav | L | GL | GLS | SR |
|--|-----|---|----|-----|----|
| Inertia-type rear seat belts | ● | ● | ● | ● | ● |
| Tinted glass, laminated screen with shade band | | ● | ● | ■ | ● |
| Headlamp wash/wipe | | ● | ● | ● | ● |
| Removable transparent sun roof | | ● | ● | ● | ● |
| Sliding steel sun roof | | ● | ● | ■ | ● |
| Tailgate wash/wipe (Hatch) | | ● | ■ | ■ | ■ |
| Automatic transmission | ● | ● | ● | ● | ● |
| Sports alloy road wheels | | | ● | ■ | ■ |
| Push-button radio | ● | ■ | ■ | ■ | ■ |
| Mono radio/stereo cassette | | ● | ● | ■ | ● |
| Stereo radio/stereo cassette | | ● | ● | ● | ● |
| Metallic paint finish | ● | ● | ● | ● | ● |

● – Optional. ■ – Standard equipment.

Euroservice

To maintain your Vauxhall at peak efficiency, Vauxhall dealers operate the Euroservice Maintenance Plan. Two simplified service schedules, at 6,000 and 12,000 mile intervals respectively, can be completed by any UK Vauxhall dealer and at GM service points throughout Europe. With factory-trained technicians using special tools, and fitting factory-supplied parts, you have service back-up second to none.

Master Hire

Often, usership can be more beneficial than ownership – through the highly flexible Vauxhall Master Hire system.

A Master Hire lease can run for up to three years at the same monthly rental. So you get years of stable vehicle costs free from inflation; you can budget ahead with accuracy.

Your lease can be arranged at any of over 150 Master Hire dealers throughout the country – with service in all parts of Great Britain. If you would like to know more about Master Hire, contact Vauxhall Motors Ltd., Route 8332 (SH2), Kimpton Road, Luton, Beds.

Vauxhall Rental

You can hire one of the latest Vauxhall models at any of over 150 Vauxhall Rental offices throughout the UK. For further details of your nearest office, telephone Luton (0582) 21122 extension 8332.

You can save on insurance with VIP

By owning a Vauxhall you could lower your motoring costs even further with the help of the Vauxhall Insurance Plan.

It's exclusively for Vauxhall owners and has the full backing of Vauxhall Motors plus the complete security of a Lloyd's Motor Insurance Syndicate.

Whether your Vauxhall is new or a used model of any age, VIP could provide you with maximum insurance cover for greatly reduced premiums.

And the lower premiums you pay don't mean lower protection. Just the opposite. You enjoy much better cover with VIP.

VIP is available in England, Scotland and Wales, but not Northern Ireland or abroad. For more details and a form for a no-obligation, free quotation, write to The HP Motor Insurance Services Ltd., (Vauxhall Insurance Plan), FREEPOST, 293-305 High Street, Stratford, London E15 2BR. No stamp is needed.



an optional long-term warranty scheme for new cars that guarantees your peace of mind.

'Sureguard' is one of the most comprehensive optional long-term warranty covers for new cars currently available in the U.K. And at extra-keen value-for-money prices, plus choice of protection over two years with unlimited mileage or for three years for up to 65,000 miles. Your new car is well and truly covered and you drive with the extra peace of mind made possible by the sheer scope of 'Sureguard's' protection.

EXAMINE THESE MANY ADDITIONAL ADVANTAGES OF 'SUREGUARD'

- Supplements your new-car warranty during the first year – so in the event of a valid claim you're covered for towing-in charges plus reimbursement towards the cost of a rental car if necessary in the UK.
- Protection against mechanical and electrical repairs during private or business mileage in the UK or Continental Europe. And 'Sureguard' can apply to self-drive hire cars and driving school cars – with no additional special clauses applying.
- No time limit on Continental usage.
- Can be obtained for all new Vauxhall cars within 30 days of original registration date and available through most Vauxhall dealers.
- Extensively backed by Vauxhall dealer network in the UK and vast GM Euroservice dealer network throughout Europe.
- 'Sureguard' cover is transferable on the private sale of the car at no additional charge, adding to its value as a used car.
- No limit on the number of claims that can be made.
- Simple claims procedure ensures repairs are made swiftly and efficiently.
- Vauxhall 'Sureguard' is under-written by a member of the British Insurance Association and operated by Hogg Robinson – leading international insurance brokers.

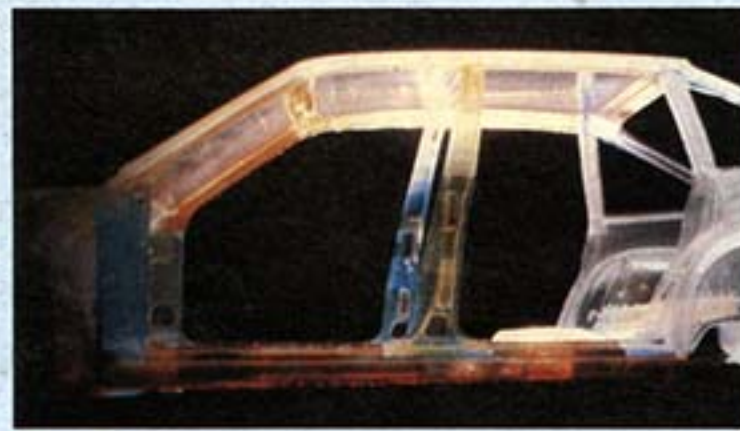
SO MUCH 'SUREGUARD' PROTECTION FOR SO LITTLE COST

| 2nd year coverage (12 month period after expiry of manufacturer's warranty). | | 2nd and 3rd year coverage (24 month period after expiry of manufacturer's warranty). | |
|---|--------|---|---------|
| Small cars (Chevette, Astra) | £58.00 | Small cars (Chevette, Astra) | £112.00 |
| Medium cars (Cavalier) | £66.00 | Medium cars (Cavalier) | £124.00 |
| Large cars (Carlton, Viceroy, Royale) | £77.00 | Large cars (Carlton, Viceroy, Royale) | £150.00 |

VAT does not apply. Prices subject to alteration without notice.

Vauxhall 'Sureguard' optional long term warranty scheme is operated subject to the limitations and conditions set out in the official

Policy Document. A copy of this document may be examined at any Vauxhall Dealership authorised to operate the scheme.



The information contained in this brochure was accurate at the date of going to press (March, 1982). The Company, however, reserves the right, while preserving the essential characteristics of the models described and illustrated, to introduce at any time modifications, changes of details, equipment or accessories as may be considered necessary to improve the models described or for any other reason of a constructional or operational nature. Every endeavour will be made to bring the brochure up-to-date at regular intervals, but in order to avoid any misunderstandings, any person interested should enquire of the Company, or their dealers or distributors, as to whether there have been any material alterations since the date of issue of this brochure. The colours reproduced may vary slightly from the actual paint colour due to limitations of the printing process.



Vauxhall-Opel Passenger Car Marketing,
Vauxhall Motors Limited, Luton, England, V2523 Published April, 1982



Your Vauxhall dealer:



Haines + Strange Ltd

Albion Street, Cheltenham, GL52 2RH

Telephone: 0242 25252



Vauxhall. Backed by the world-wide resources of General Motors.

Vauxhall cars are designed in Europe specifically to meet the demanding requirements of European motorists. The advanced technology in today's Vauxhalls though, is made possible by the Company being part of General Motors, the world's largest car and truck manufacturer.

At General Motors' 330-acre Technical Centre in the US, research and development facilities are on an unrivalled scale.

Aerodynamics, new engines, transmissions, electronics, new propellants, manufacturing techniques - these and every other aspect of car design are the subject of intensive development providing backing for General Motors' divisions throughout the world.

The facilities are further strengthened by General Motors' research and development centres such as the Millbrook

Proving Ground in the UK.

It enables Vauxhall to introduce new technology and advanced design features ahead of the field thus benefiting our customers.

It is well-proven technology aimed at designing fuel-efficient, stylish and practical cars that represent outstanding value for money.