

THE NEW VAUXHALL

# ASTRA

A PREVIEW





The new Vauxhall Astra will soon be making its debut in dealership showrooms. Then, its exciting style, high technology and class-leading standards will re-shape opinions on just how good a car of this type and size can be.

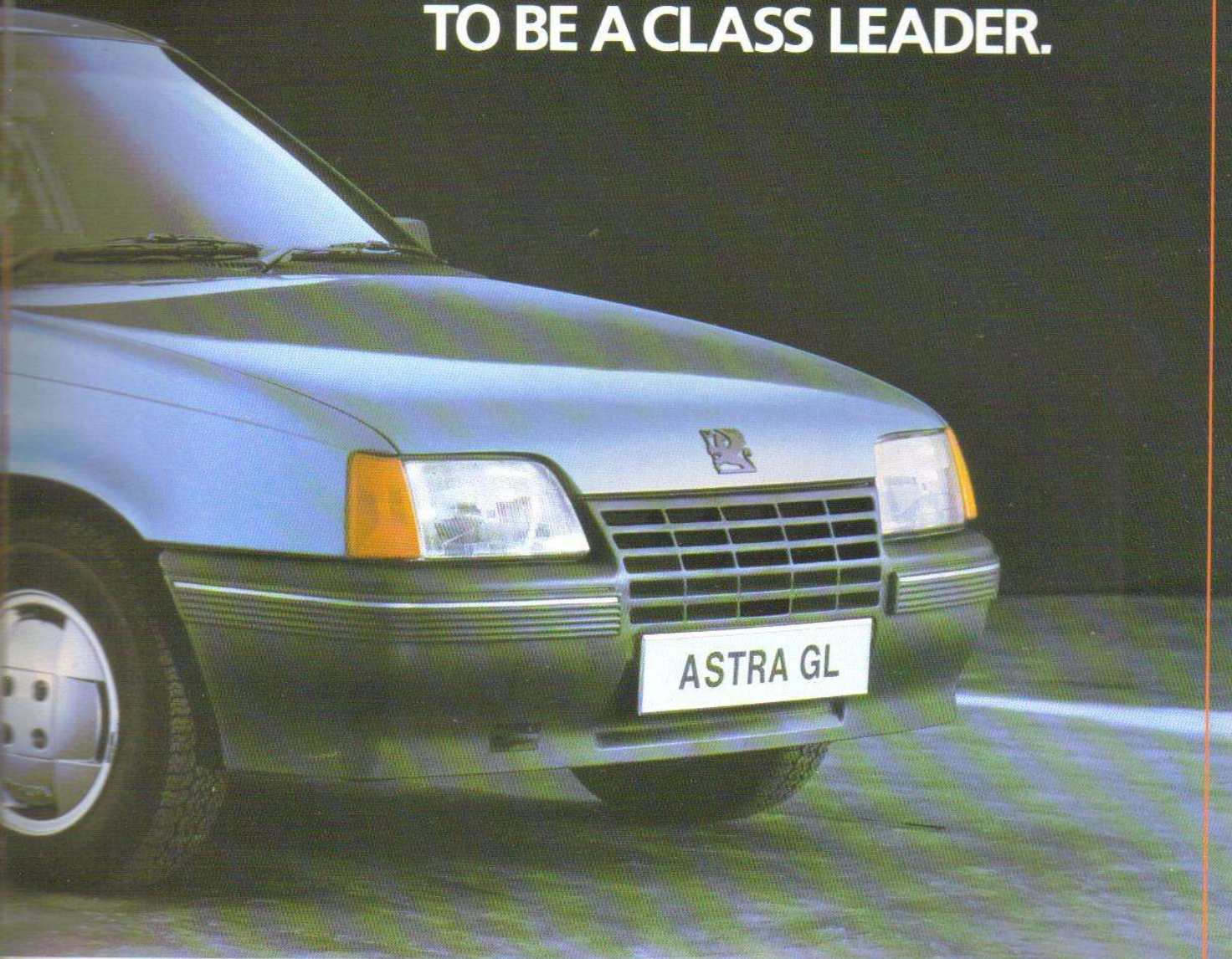
It scores by being designed and developed to an entirely new concept.

And being built by advanced manufacturing techniques that establish equally new levels of quality and durability.

The new Astra range of 12 hatchbacks and 5 estates can show the best windcheating shapes of any cars in their class; the best combination



# NEW ASTRA. DESIGNED AND BUILT TO BE A CLASS LEADER.



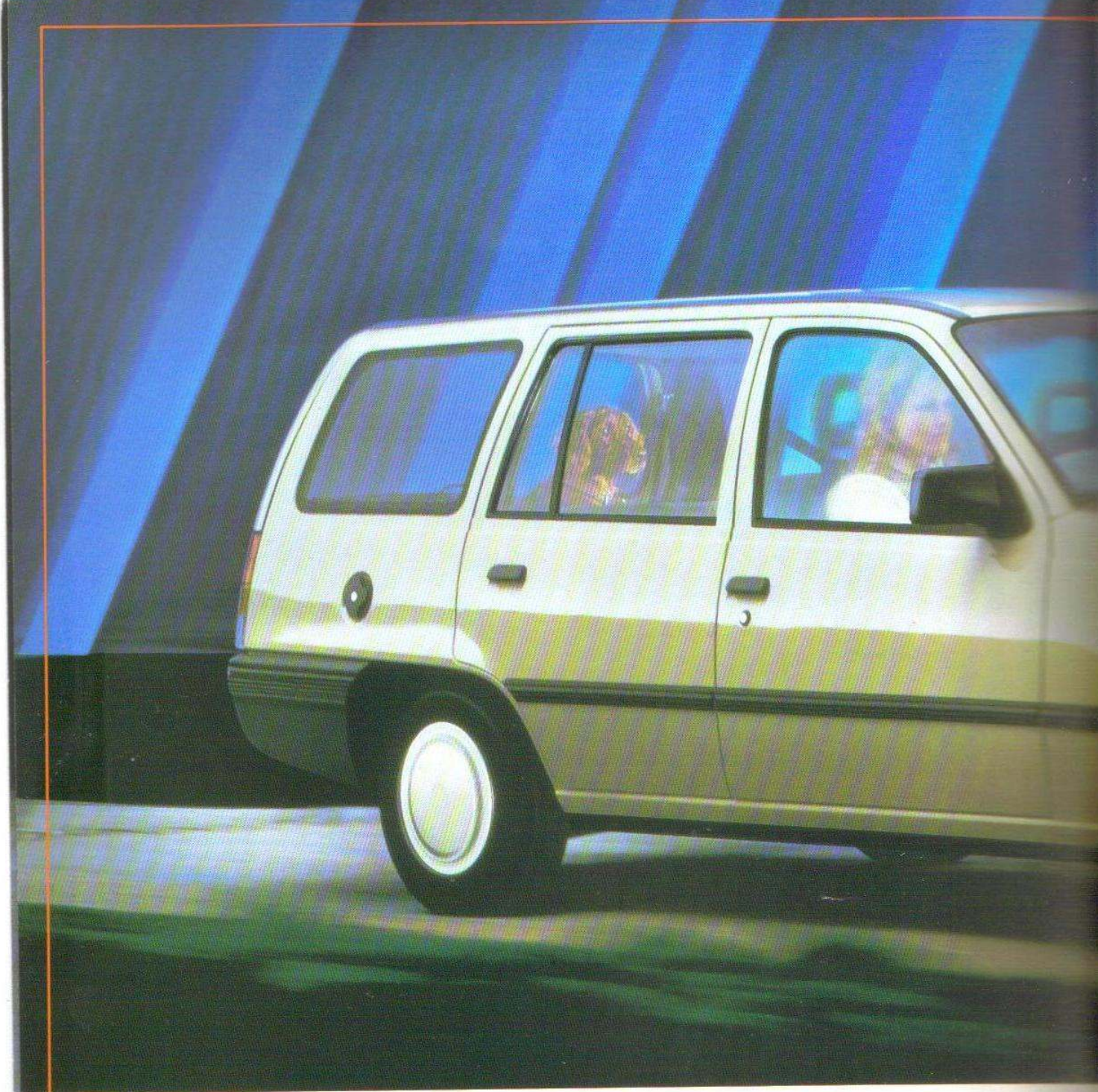
*Astra GL illustrated with optional alloy wheels.*

of performance and economy; exceptional roominess; easy, low-cost servicing.

The new Astra has the proven strengths of its predecessor's mechanical specification, even further refined and there's the safe, sure handling and stability that earned high praise from the motoring press and made the Astra a benchmark.

The luxurious GL and sporty SR hatchbacks shown here are just two from a wide choice of specification levels — including the sensational 126mph Astra GTE — and at value-for-money prices.





The new Astra Estate swallows a lot more than most estate cars that are in a class above it in terms of size.

Yet it's remarkably compact and delightfully manoeuvrable. The new Astra Estate's space utilisation scores by being completely uncluttered. And the near vertical tailgate gives lots of valuable extra inches inside — especially useful for those large, oblong loads.

And an Astra Estate isn't short on muscle either. It makes most other estates look downright inadequate with its heavy-load capabilities and punchy performance.

There are plenty of thoughtful

# ASTRA ESTATE. THE CLASS LEADER IN SPACE.



design points too, such as vertical rear light clusters, so there are no projections to get in the way and a specially designed rear bumper making loading even easier. And every model has numerous features special to an estate.

Inside, an Astra Estate offers the same degree of comfort and luxury as its hatch counterpart. So all told, it's the smartest 'hold-all' you can be seen in.



*Automatic transmission, illustrated left, is optional at extra cost.*



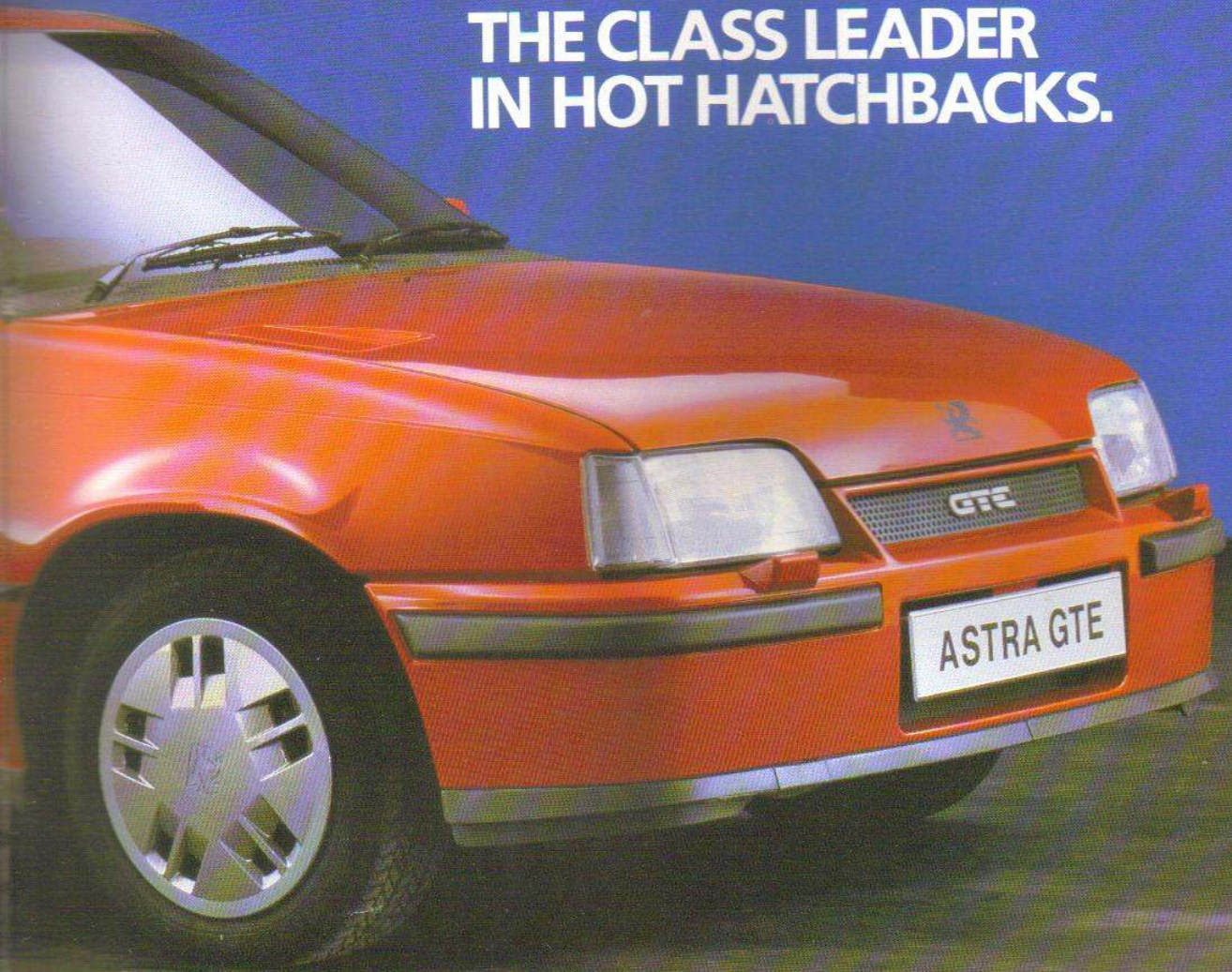
Hot hatchback enthusiasts will soon be revising their 'short list' of favourites with the arrival of the exciting new Astra GTE on the scene.

On speed alone it's in the 'scalding' class — up to 126mph max, with the getting there just as exhilarating. And its amazingly low drag co-efficient is world-beating for this class of car.

Under the streamlined bonnet, the potent, highly-developed 1800 fuel-injected engine has 115 horsepower on tap to smooth the way around town or clear fast lanes fast. The 5-speed close ratio gearbox begs to be used at the slightest



# ASTRA GTE. THE CLASS LEADER IN HOT HATCHBACKS.



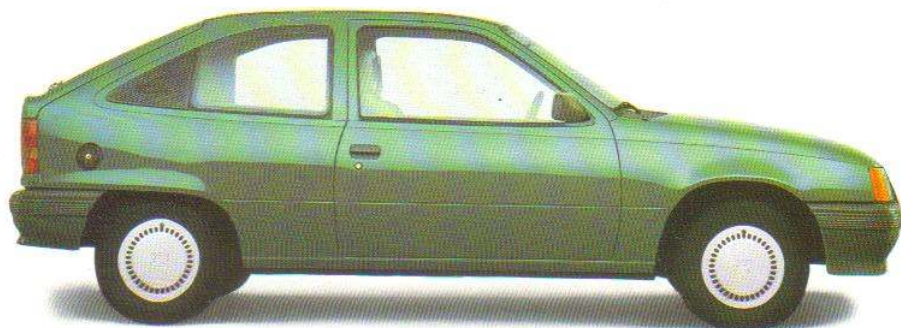
excuse with its slick action and electrifying results.

Speed though, is only one facet of the GTE's super talent as a performance car.

With special nose and tail sections incorporating finely-developed spoilers, the GTE runs true in all road conditions.

Slip behind the wheel of an Astra GTE at the first opportunity. You'll fit like a glove in the sports-style seating. And a glance at the GTE's ultra modern LCD instrument panel will confirm that you're in command of a hatch that's destined to go places. Very quickly indeed.





#### **ASTRA 3-door Hatchbacks**

These models offer choice of 1200S/1300S engines and are remarkably well-equipped. 'L' specification extends the luxury even further, with the sporty SR powered by the potent 1600S engine coming in with individual style.



#### **ASTRA 5-door Hatchbacks**

Astra, Astra L and Astra GL; 5-door models with a power choice of 1200S/1300S/1600S petrol engines (depending on trim level) plus 1600 diesel 'L'. GL models are ultra luxurious and superbly refined.

*Astra GL illustrated with optional alloy wheels.*



#### **ASTRA Estates**

Three and five-door estates with huge space advantages. In 'L' specification there's a choice of 1300S/1600S petrol engines or 1600 diesel. All incorporate unique estate-only design features.



#### **ASTRA GTE**

The sports hatch *par excellence*. Stunning 126mph top speed with all the right equipment and essential aerodynamics deserving of a thoroughbred.

Yes, I like the look of the new Vauxhall Astra.  
Please send me full literature when available.

Your friendly Vauxhall-Opel dealer.

Name \_\_\_\_\_

Address \_\_\_\_\_  
\_\_\_\_\_  
\_\_\_\_\_  
\_\_\_\_\_

Telephone \_\_\_\_\_

**COUNTY MOTORS (GRIMSBY) LTD.**  
26-32 BRIGHOWGATE  
GRIMSBY  
DN32 0QS  
Telephone: 58486/7/8

Every effort has been made to ensure that the contents of this publication were accurate and up to date at the time of going to press (August 1984). However, with Vauxhall-Opel's policy of continuous product improvement, the Company reserves the right to change specifications and make modifications to the vehicles described and illustrated at any time.



Vauxhall-Opel Passenger Car Marketing  
Vauxhall Motors Limited, Luton, England  
Published August 1984. V6001.