

VAUXHALL

ASTRA



Edition No.3. 1982



Alloy wheels and tinted glass on the car illustrated are optional at extra cost.

Astra.

Engineered for space, performance and value.

Among its contemporaries, the Astra is a remarkable car. It offers an outstanding combination of exceptional roominess within compact overall size, plus pace-setting roadholding, handling and performance with economy that makes it great fun to drive. The Astra's up-to-the-minute, aerodynamically efficient styling – extensively proven in wind tunnel tests – is matched by interiors that epitomise good design. Space-saving front wheel drive makes more room for passengers and luggage. Advanced computer-design techniques achieve maximum strength with minimum weight – an important aspect of the Astra's economy potential. Built-in ruggedness for extra reliability is coupled to really simplified maintenance to keep running costs well below the norm.

There are two saloons and three hatchbacks with the well-proven 1200S engine to bring advanced engineering into a really economical price area.

Six hatchbacks introduce the 1300S overhead cam engine and the highly potent 1600S ohc unit. And both engines are available with the newly developed GM 3-speed automatic transmission.

Four roomy estates, including an E model, provide a wide choice with 1300S or 1600S power and three or five doors according to your preference.

Drive an Astra at the first opportunity – it's the only way to appreciate the refinement, quality and value built into a car that has earned its place among the top ten best-sellers in the UK.





Shaping up for all-round performance

Whichever Astra body style is for you, all three share the same careful attention to detail design. Being aerodynamically efficient, the Astra uses less power to overcome air resistance, which means your petrol stretches further and performance edges higher too, and wind noise is lessened.

The deep front air spoiler smooths out the air flow over and under the car. Front end 'lift' is minimised and even in strong crosswinds the Astra is remarkably stable.

Easy driving

Powerful broad beam halogen headlights and wrap around indicators blend with the matt black grille. Steel bumpers front and rear have protective thermoplastic clip-on-covers. The short sloping bonnet, slim pillars and deep glass area aid confident driving and make parking easy in those tight spots. Even the driver's door mirror is aerodynamically styled to deflect spray away from the side windows.

The Astra Saloon shares the same stylish outline and dimensions as the hatch, but here's where Astra engineering ingenuity comes into its own. The boot lid, hinged below the rear screen, swings open to reveal a capacious 14.5 cu.ft. of luggage space and a flat floor with no sill for easy loading.

The Astra Hatch opens up to give up to 34.6 cu.ft. A rear cover conceals valuable items from view and is easily stowed when greater cargo capacity is needed.

Naturally, there's even more space in the Astra Estate - up to 50.3 cu.ft. In fact, the Astra Estate can take more payload than any other estate car in its class; and as much - and in some instances more - than cars which are larger.

The almost square-shaped rear makes it all possible. Then there's the long, wide flat floor, a really generous width across the tailgate and a low floor height to take the strain out of loading and unloading.





Space. Comfort. Luxury.

Astra interiors are a blend of spacious comfort and refined luxury. The big-car airiness comes from the clever use of space – made possible by the front wheel drive/transverse engine layout.

Both front and rear seats are full size, with plenty of room for shoulders and legs. The body-contoured reclining front seats incorporate special spinal supports to make sure that even the longest journeys are fatigue-free. And on all models front head restraints are standard.

Whilst the Astra is big on passenger appeal, it is also a car that's a driver's delight.

Ahead of the soft feel sports steering wheel, controls are arranged according to primary and secondary functions. Primary functions are those directly concerned with driving – headlight dip switch, indicators, wiper, washer and horn – and are given preference in location. Both levers controlling these functions give precise finger-tip control; the driver's hands never need to leave the wheel.

When you're seated comfortably, the Astra's mixed air heating system ensures you stay that way.

Central fresh air vents on the fascia are independently adjustable so that you can have cool air at head level and warm air at foot level.

Complete with side window demist vents and a powerful 2-speed radial fan, the system is so efficient that the entire volume of air inside the car can be changed up to *three times per minute*.

Choice

Astra saloons offer the choice of two trim/equipment levels, with Plain Tweed cloth on the E and Chevron Tweed cloth for the L. On hatchbacks you can choose E or L plus the GL model with luxury velour.

The estate comes with E or L trim – both ideal for a car that adapts perfectly to its dual role of hard-working estate and comfortable family transport.





Astra E.

For 1982, the Astra 1200SE 2-door Saloon is joined by the 1200SE 3-door Hatchback and 1300SE 3-door Estate - two new models that lower the price threshold of advanced car design still further.

Even with sporty fast-back styling, the saloon offers 14.5 cu.ft. of useable luggage space, the hatch up to 34.6 cu.ft. and the Estate a huge 50.3 cu.ft.

Round halogen headlamps are an E styling feature and the value specification includes a petrol locking cap and black thermoplastic covers for the steel beam bumpers.

New interior features include attractive hard wearing Plain Tweed cloth upholstery, open type front seat head restraints and front passenger assist handle.

The lively 1200S front wheel drive transverse mounted engine delivers 60 Hp and great economy, whilst the ohc 1300S with its 75 Hp ensures easy performance for the E Estate if fully laden.







Astra L.

Astra L models introduce extra wide choice. There's a 4-door saloon with 1200S engine and this unit also powers two hatchbacks with the alternative of 3 or 5 doors. These models bring the luxury of the L specification into a lower price area.

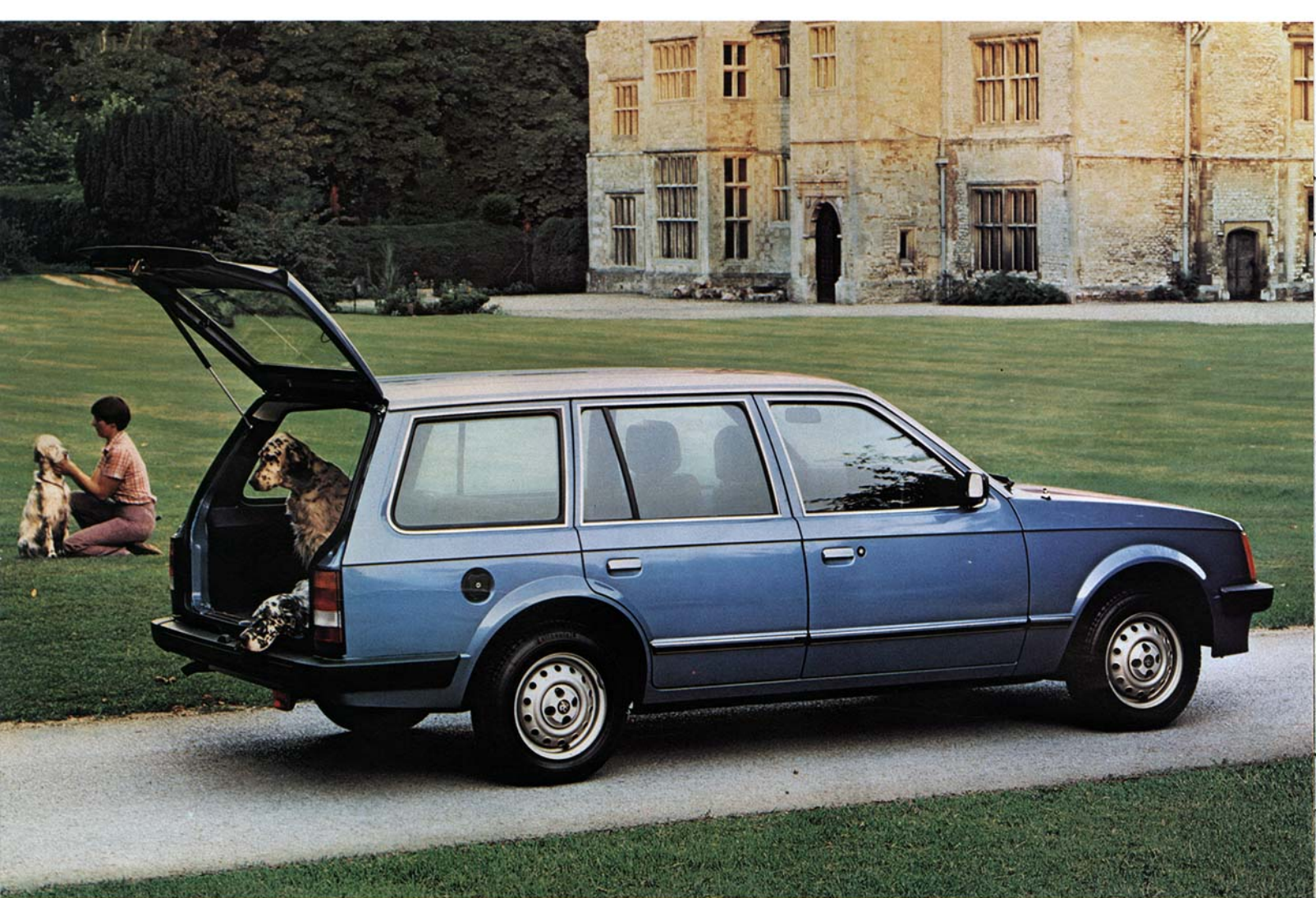
From this point hatchbacks and estates are powered by the advanced 1300S ohc engine on three and five door variants. If you like a car that can comfortably top 100 mph where speed limits allow and give remarkable economy as well, you can specify the powerful 1600S ohc engine with electronic ignition, on five door models.

On both 1300S and 1600S engines, GM automatic 3-speed transmission is optional at extra cost.

For 1982 we've also incorporated such worthwhile exterior improvements as body side protection mouldings, whilst inside a push-button radio and trip odometer are now standard. Along with smarter door trim, additional colour keying adds extra refinement and new-design front seat backs give rear passengers even more knee room than before.

The hatch combines sporty style with seating/load versatility, with the smart Astra L Estate carrying the big load theme even further. (See illustration and description overleaf).





Astra GL.

The GL Hatch is unmistakably the top Astra in the range. Velour upholstery is matched by velour carpeting, which extends to the load compartment. Luxury touches include continental-style front door armrests and carpeting on the lower door sections to obviate scuffing.

Behind the soft-feel 4-spoke steering wheel, the comprehensive fascia incorporates a push button radio, illuminated glove box and quartz clock among the many standard GL features. For extra convenience, the driver's door mirror is adjustable from inside and the interior rear view mirror is the dipping type.

Comfort

Body-contoured, the front reclining seats have head restraints adjustable for angle and height. Special spinal supports are built into the seats to make sure even the longest journeys are fatigue-free. And even with the rear seat completely folded down, the front seats still recline and can be set in the rearmost position – a boon for tall drivers.

Rich, crease resistant velour cloth upholstery is colour keyed to the equally luxurious, deep velour carpet. It has its own separate underlay to give a soft feel underfoot.

Convenience

Three point, inertia reel front seat belts have concealed automatic reels. There's ample stowage space for oddments with a centre console tray, two

The Astra L Estate is practical. It shows in the square shaped rear section, up to 50.3 cu. ft. of space, flat floor, low loading height and tailgate wash/wipe to make it the ideal dual-purpose car.

The long, high roofline gives the greatest possible load space and maximum length of the rear floor is 64.2 in. And there's the convenience of wide-opening side doors.

Loading height is an easy 22 in. from the ground. Even with the rear seat up there's a generous 15.5 cu.ft. of space.





door pockets and an illuminated glove locker. Other convenience features include assist handles for front and rear passengers, rear coat hooks, a passenger's sun visor and an interior light with front door courtesy switches.

Stylish steel wheels complement the GL Hatch's sporty appearance - matched on the road by the easy power of the free revving ohc engine.

Numerous options are available at extra cost so that you can tailor the Astra GL precisely to your liking. The range includes tinted glass all round and this option comes complete with a laminated screen and graduated shade band at the top.

There's a choice of two sun roofs - the sliding steel type or a transparent tinted sun roof that's completely removable. Sports alloy road wheels enhance appearance even further.

The Astra has always been acknowledged as great fun to drive and with road holding at the top of its class. When powered by the highly potent, all-new 1600S ohc engine, Astra performance is exhilarating to say the least, yet always maintaining levels of economy for which this Vauxhall is noted.



1600S



All-new 1600S ohc engine. The Bosch electronic ignition mounted on the top of the rocker cover is factory adjusted and ignition timing remains constant – an aid to fuel economy.

Engineering refinement

Although the Astra incorporates a high degree of technical innovation and engineering refinement, great emphasis was placed – at the design stage – on robustness and reliability coupled with really simple maintenance.

The 1200S engine has proved its worth over many millions of miles conventionally installed in European saloons and hatchbacks. Now, transversely mounted in the Astra, it combines willing performance with outstanding economy.

Specially developed for General Motors' front wheel drive cars, the 1300S and all-new 1600S with electronic ignition are among the most powerful in their class.

Advanced design

Both are overhead cam designs featuring hydraulic tappets that never need adjustment and alloy cross flow cylinder heads for maximum efficiency and lower pollutant levels. The 1600S, particularly, points the way to the future. It produces 90 Hp with equally powerful torque – 93.0 lb/ft at

3800 rpm – together with excellent fuel economy.

If you like to drive with verve, you'll like the Astra's suspension. MacPherson struts at the front have heavy duty shock absorbers with a Teflon coating to reduce friction.

At the rear, Minibloc coil springs combine with trailing links and a torsional cross-beam to give excellent anti-roll characteristics – aided by anti-roll bars both front and rear on 1300S/1600S models.

Precise, light action rack and pinion steering is matched by superb braking.

The dual circuit is diagonally split for extra safety. Large diameter front discs and rear drums have servo assistance to lighten pedal pressures.

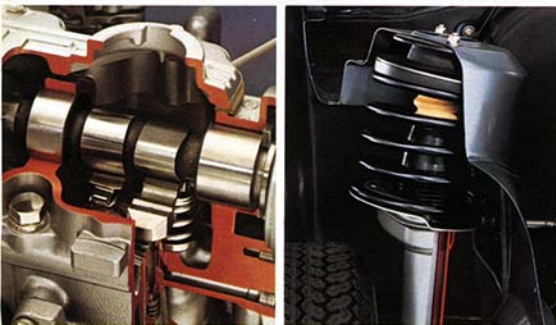
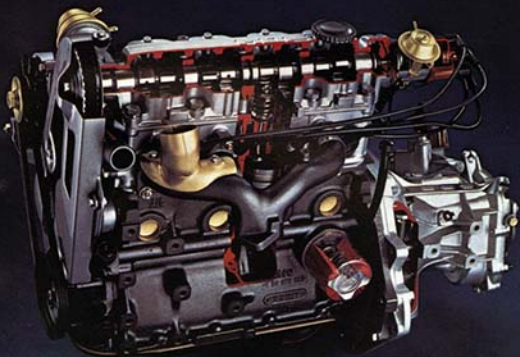
The all steel body has front and rear crumple zones that give controlled deformation rates under impact. Locks and hinges too, form a protective barrier around the car at waist level.

Economical to run, quick and easy to maintain, the Astra provides big car roominess and all round driving flair that have established it as the benchmark for its class.



At the design stage, special attention was paid to eliminating the traditional complications of front wheel drive. As a result, the Astra's system is robust, refined and easily maintained.

1300S



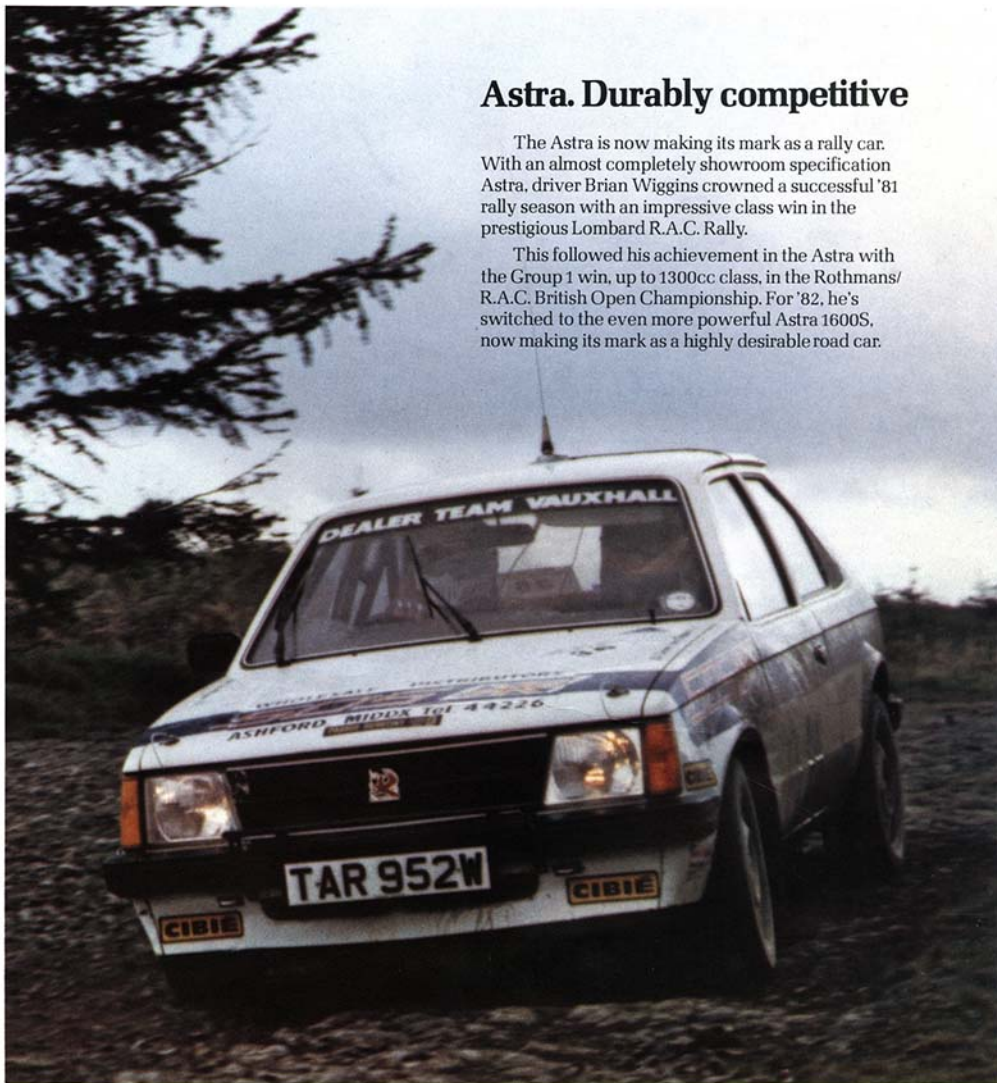
Hydraulic tappets regulate valve clearance automatically. No adjustment is necessary during the service life of the engine.

MacPherson strut front suspension is highly efficient in absorbing road shocks. The cartridge type shock absorber is easily replaceable.

Astra. Durably competitive

The Astra is now making its mark as a rally car. With an almost completely showroom specification Astra, driver Brian Wiggins crowned a successful '81 rally season with an impressive class win in the prestigious Lombard R.A.C. Rally.

This followed his achievement in the Astra with the Group 1 win, up to 1300cc class, in the Rothmans/R.A.C. British Open Championship. For '82, he's switched to the even more powerful Astra 1600S, now making its mark as a highly desirable road car.



Specification

Engines

'1200S' 1196cc ohc 4-cylinder. Hp (DIN) 59.0 @ 5800rpm. Torque (max) 64.9 lb/ft @ 3000rpm. Manual choke. Electric fan. Compression ratio 9.0:1 (Four-star fuel).

'1300S' 1297cc ohc 4-cylinder. Hp (DIN) 75.0 @ 5800rpm. Torque (max) 74.5 lb/ft @ 3800rpm.

'1600S' 1598cc ohc 4-cylinder. Hp (DIN) 90.0 @ 5800rpm. Torque (max) 93.0 lb/ft @ 3800rpm.

Both 1300S and 1600S engines feature: alloy cross-flow cylinder head, hydraulic tappets, automatic choke, electric fan, Varajet 11 carburettor. Compression ratio 9.2:1 (Four-star fuel). 1600S: Bosch electronic transistorised breakerless ignition with Hall transmitter.

Transmission

Mechanical clutch, 4-speed all synchromesh gearbox. Final drive ratios: 1200S and 1300S - 3.94:1. 1600S - 3.74:1. Estates - 4.18:1. GM3-speed automatic transmission optional at extra cost on 1300S and 1600S. Automatic final drive ratios: 1300S - 3.74:1. 1600S - 3.33:1.

Gear Ratios

1200S/1300S, first, 3.636:1; second, 2.211:1; third, 1.429:1; fourth, 0.969:1; reverse, 3.182:1.

1600S, first, 3.545:1; second, 2.158:1; third, 1.370:1; fourth, 0.971:1; reverse, 3.333:1.

Automatic ratios: P-park; R-2.07; N-neutral; D-2.84/1.60/1.00; 2-2.84/1.60; 1-2.84.

Suspension

Independent front, with MacPherson struts, coil springs and separate shock absorber cartridge. Compound crank rear suspension. Miniblock coil springs with progressive rate. Telescopic shock absorbers. Anti-roll bars front and rear on 1300S/1600S.

Brakes

Diagonally split dual circuit servo-assisted, 9.3in dia. front discs, 7.9in dia. rear drums. Pressure conscious reducing valve on 1300S/1600S hatch and saloon. Load-sensitive proportioning valve on estate. Handbrake-on and brake fluid loss warning light.

Steering

Rack and pinion. 32.6ft turning circle. Energy-absorbing steering column.

Wheels/Tyres

Astra E and L models: 5J steel wheels; 155SR 13 radials. Sports alloy wheels optional on L saloons and hatchbacks.

Astra GL Hatchbacks: 5J; 14-slot wheels; 155SR 13 radials.

Sports alloy wheels optional.

Electrics

12 Volt negative earth system. 45 Amp alternator. 44 Ah battery.

Fuel Capacities

Saloon and hatchback, 9.2 Imp. gallons (42 litres). Estate, 11.0 Imp. gallons (50 litres). Fuel system accepts petrol with up to 6 per cent methanol content.

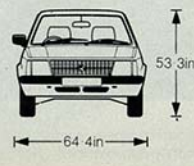
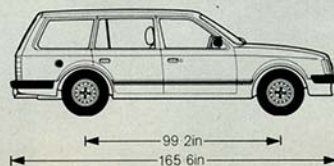
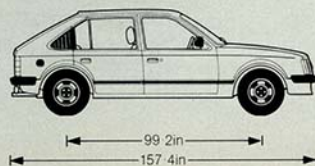
Colours and trims

	E	L	GL
Exterior colour	Tweed cloth	Chevron	Velour cloth
Polar White	Red	Red	Red
Smoke Blue	Blue	Blue	Blue
*Sapphire Blue Metallic	Blue	Blue	Blue
Reed Green	Beige	Beige	Beige
*Silver Green Metallic	Beige	Beige	Beige
Jamaica Yellow	Beige	Beige	Beige
*Antique Gold Metallic	Beige	Beige	Beige
Gazelle Beige	Beige	Beige	Beige
*Hazel Brown Metallic	Beige	Beige	Beige
Henna Red	Red	Red	Red
*Metallic paint optional at extra cost			
For additional information please refer to separate Colour & Trim leaflet.			

Weights	Kerbweight		GVW	
	(M) lbs	(A) lbs	(M) lbs	(A) lbs
Astra 1200S E 2-dr. Saloon	1852		2866	
Astra 1200S L 4-dr. Saloon	1962		2910	
Astra 1200S E 3-dr. Hatch	1852		2866	
Astra 1200S L 3-dr. Hatch	1918		2910	
Astra 1200S L 5-dr. Hatch	1962		2910	
Astra 1300S L 3-dr. Hatch	1918	1984	2910	2998
Astra 1300S L 5-dr. Hatch	1962	2028	2954	3042
Astra 1300S GL 3-dr. Hatch	1918	1984	2910	2998
Astra 1300S GL 5-dr. Hatch	1962	2028	2954	3042
Astra 1300S E 3-dr. Estate	1973	2028	3075	3131
Astra 1300S L 3-dr. Estate	1973	2028	3075	3131
Astra 1300S L 5-dr. Estate	2017	2072	3075	3131
Astra 1600S L 5-dr. Hatch	2072	2127	3086	3131
Astra 1600S GL 5-dr. Hatch	2072	2127	3086	3131
Astra 1600S L 5-dr. Estate	2127	2183	3175	3219

(M) - Manual Transmission (A) - Automatic Transmission

Gross vehicle weight is the total permissible weight of the vehicle including passengers to the designated seating capacity, and their luggage. To determine total carrying capacity, deduct kerb weight from gross vehicle weight. Roof rack, maximum load: 176 lb evenly distributed. For safety, it is inadvisable to exceed 60 mph with roof rack laden.



Astra range - equipment

Astra E

Interior. Plain Tweed cloth trim. Reclining front seats. See-through front head restraints. Front inertia reel seat belts. Carpeted passenger compartment. Boot mat. Front door armrests. Soft-feel steering wheel. Twin sun visors. Glove compartment. Internal bonnet release. Heated rear window. Stalk control for 2-speed wipers, intermittent wiper and electric screenwash. Stalk control for headlamp dip/flash and turn indicators. Front door courtesy switches. Front ashtray. Front passenger assist handle. Air blend heater with 2-speed blower fan. Adjustable face level air vents. Side window demist vents. Instrument console incorporating speedometer, odometer, fuel and water temperature gauges; warning lights for alternator, oil pressure, main beam and direction indicators; handbrake-on and brake fluid loss.

Exterior. Comprehensive anti-corrosion protection. Front air spoiler. Black thermoplastic clip-on bumper covers. Circular halogen headlamps. Driver's door mirror. Hazard warning flashers. Reverse lights. Locking fuel cap. E boot badge.

Astra LAs for the Astra E plus:

Interior. Chevron Tweed cloth trim. Fully upholstered and adjustable front seat head restraints. Colour-keyed carpet. Front door pockets. Push button radio. Central console and tray. Lidded glove box. Rear passenger assist handles. Rear armrests (4-dr models). Childproof rear door locks (4-dr models). Rear ashtrays. Illuminated heater controls. Trip odometer. Extended door trim. Extra colour-keying.

Hatchback only Load deck mat. Hinged rear load cover. Fold down rear seat.

Exterior. Extra brightwork. Rectangular halogen headlamps. Body side protection mouldings. Fully retracting aerial. L boot/taillgate badge.

Estate only Tailgate wash/wipe.

Astra GL As for Astra L plus:

Interior. Velour cloth trim. Additional sound insulation. Fitted Velour carpet. Carpeted load compartment. Full door trim. Continental-style front armrests. Carpeted lower door sections. 4-spoke soft-feel steering wheel. Illuminated glove box. Dipping rear view mirror. Load compartment light. Tailgate courtesy light. Illuminated cigar lighter. Quartz clock. Extended colour-keying.

Exterior. Styled steel wheels. Tailgate wash/wipe. Remote control driver's door mirror. Underbonnet lamp. GL tailgate badge.

Cargo space dimensions	Hatch	Estate
Max. length rear floor	49.6 in	64.2 in
Length behind rear seat	32.7 in	41.5 in
Max. width, rear floor	51.6 in	51.6 in
Tailgate opening width	42.1 in	44.3 in
Max. cargo height	32.3 in	33.2 in

Load Capacities (cu. ft.)

	Rear seat up	Rear seat down
Saloon	14.5	-
Hatch	13.4	34.6
Estate	15.5	50.3

Options

An attractive range of options plus specially developed accessories, enable the Astra owner to equip the car exactly to his or her liking.

Option:	Astra E	Astra L	Astra GL
Inertia-type rear seat belts	●	●	●
Tinted glass, laminated screen with shade band		●	●
Laminated screen	●	●	●
Removable transparent sunroof*		●	●
Sliding steel sunroof*		●	●
Tailgate wash/wipe†		●	S
Automatic transmission**		●	S
Sports alloy road wheels*		●	S
Push-button radio	●	S	S
Mono radio/stereo cassette with 4 speakers	●	●	●
Metallic paint	●	●	●

●—Optional. S—Standard equipment

* Not available on Estates

† Not available on Saloons, standard on L Estate

**Not available on 1200S engine

DoT Fuel Consumption Tests

Astra	Mpg (Litres/100km)		Simulated		Constant Speed	
			Urban Driving	56mph (90km/h)	75mph (120km/h)	
Astra E 1200S Saloon	(M)	31.4(9.0)	49.6(5.7)	35.3(8.0)		
Astra E 1200S Hatch	(M)	31.4(9.0)	49.6(5.7)	35.3(8.0)		
Astra E 1300S Estate	(M)	31.7(8.9)	47.9(5.9)	36.2(7.8)		
Astra L 1200S Saloon	(M)	31.4(9.0)	49.6(5.7)	35.3(8.0)		
Astra L 1200S Hatch	(M)	31.4(9.0)	49.6(5.7)	35.3(8.0)		
Astra L 1300S Hatch	(M)	31.7(8.9)	47.9(5.9)	36.2(7.8)		
Astra L 1300S Estate	(M)	31.7(8.9)	47.9(5.9)	36.2(7.8)		
Astra L 1600S Hatch	(M)	28.2(10.0)	44.8(6.3)	33.6(8.4)		
Astra L 1600S Estate	(M)	28.2(10.0)	44.8(6.3)	33.6(8.4)		
Astra GL 1300S Hatch	(M)	31.7(8.9)	47.9(5.9)	36.2(7.8)		
Astra GL 1600S Hatch	(M)	28.2(10.0)	44.8(6.3)	33.6(8.4)		
Astra E 1300S 3-dr Estate	(A)	31.4(9.0)	44.8(6.3)	33.6(8.4)		
Astra L 1300S Hatch	(A)	31.4(9.0)	42.8(6.6)	32.8(8.6)		
Astra L 1300S 3-dr Estate	(A)	31.4(9.0)	44.8(6.3)	33.6(8.4)		
Astra L 1300S 5-dr Estate	(A)	29.4(9.6)	44.8(6.3)	33.6(8.4)		
Astra L 1600S Hatch	(A)	29.7(9.5)	42.8(6.6)	31.4(9.0)		
Astra L 1600S Estate	(A)	29.7(9.5)	42.8(6.6)	31.4(9.0)		
Astra GL 1300S 3-dr Hatch	(A)	31.4(9.0)	42.8(6.6)	32.8(8.6)		
Astra GL 1300S 5-dr Hatch	(A)	29.4(9.6)	42.8(6.6)	32.8(8.6)		
Astra GL 1600S Hatch	(A)	29.7(9.5)	42.8(6.6)	31.4(9.0)		

M—Manual Transmission A—Automatic Transmission.

Euroservice

To maintain your Vauxhall at peak efficiency, Vauxhall dealers operate the Euroservice Maintenance Plan. Two simplified service schedules, at 6,000 and 12,000 mile intervals respectively, can be completed by any UK Vauxhall dealer and at GM service points throughout Europe.

With factory-trained technicians using special tools, and fitting factory-supplied parts, you have service back-up second to none.

Master Hire

Often, usership can be more beneficial than ownership – through the highly flexible Vauxhall Master Hire system.

A Master Hire lease can run for up to three years at the same monthly rental. So you get years of stable vehicle costs free from inflation; you can budget ahead with accuracy.

You can build-in maintenance schedules – or leave them out.

You may opt for a temporary replacement vehicle facility and competitive insurance can also be included. With Master Hire you decide.

Your lease can be arranged at any of over 150 Master Hire dealers throughout the country – with service in all parts of Great Britain. If you would like to know more about Master Hire, contact Vauxhall Motors Ltd., Route 8332 (SH2), Kimpton Road, Luton, Beds.

Vauxhall Rental

You can hire one of the latest Vauxhall models at any of over 150 Vauxhall Rental offices throughout the UK. For further details of your nearest office, telephone Luton (0582) 21122 extension 8332.

You can save on insurance with VIP

By owning a Vauxhall you could lower your motoring costs even further with the help of the Vauxhall Insurance Plan.

It's exclusively for Vauxhall owners and has the full backing of Vauxhall Motors plus the complete security of a Lloyd's Motor Insurance Syndicate.

Whether your Vauxhall is new or a used model of any age, VIP could provide you with maximum insurance cover for greatly reduced premiums.

And the lower premiums you pay don't mean lower protection. Just the opposite. You enjoy much better cover with VIP.

VIP is available in England, Scotland and Wales, but not Northern Ireland or abroad. For more details and a form for a no-obligation, free quotation, write to The HP Motor Insurance Services Ltd., (Vauxhall Insurance Plan), FREEPOST, 293-305 High Street, Stratford, London E15 2BR. No stamp is needed.



an optional long-term warranty scheme for new cars that guarantees your peace of mind.

'Sureguard' is one of the most comprehensive optional long-term warranty covers for new cars currently available in the U.K. And at extra-keen value-for-money prices, plus choice of protection over two years with unlimited mileage or for three years for up to 65,000 miles. Your new car is well and truly covered and you drive with the extra peace of mind made possible by the sheer scope of 'Sureguard's' protection.

EXAMINE THESE MANY ADDITIONAL ADVANTAGES OF 'SUREGUARD'

- Supplements your new-car warranty during the first year – so in the event of a valid claim you're covered for towing-in charges plus reimbursement towards the cost of a rental car if necessary in the U.K.
- Protection against mechanical and electrical repairs during private or business mileage in the U.K. or Continental Europe. And 'Sureguard' can apply to self-drive hire cars and driving school cars – with no additional special clauses applying.
- No time limit on Continental usage.
- Can be obtained for all new Vauxhall cars within 30 days of original registration date and available through most Vauxhall dealers.
- Extensively backed by Vauxhall dealer network in the U.K. and vast GM Euroservice dealer network throughout Europe.
- 'Sureguard' cover is transferable on the private sale of the car at no additional charge, adding to its value as a used car.
- No limit on the number of claims that can be made.
- Simple claims procedure ensures repairs are made swiftly and efficiently.
- Vauxhall 'Sureguard' is under-written by a member of the British Insurance Association and operated by Hogg Robinson – leading international insurance brokers.

SO MUCH 'SUREGUARD' PROTECTION FOR SO LITTLE COST

	2nd year coverage (12 month period after expiry of manufacturer's warranty).	2nd and 3rd year coverage (24 month period after expiry of manufacturer's warranty).
Small cars (Chevette, Astra)	£58.00	£112.00
Medium cars (Cavalier)	£66.00	£124.00
Large cars (Carlton, Viceroy, Royale)	£77.00	£150.00

VAT does not apply. Prices subject to alteration without notice.

Vauxhall 'Sureguard' optional long term warranty scheme is operated subject to the limitations and conditions set out in the official Policy Document. A copy of this document may be examined at any Vauxhall Dealership authorised to operate the scheme.



The information contained in this brochure was accurate at the date of going to press (March 1982). The Company, however, reserves the right, while preserving the essential characteristics of the models described and illustrated to introduce at any time modifications, changes of details, equipment or accessories as may be considered necessary to improve the models described or for any other reason of a constructional or operational nature. Every endeavour will be made to bring the brochure up-to-date at regular intervals, but in order to avoid any misunderstandings, any person interested should enquire of the Company, or its dealers, as to whether there have been any material alterations since the date of issue of this brochure. The colours reproduced may vary slightly from the actual paint colour due to limitations of the printing process.



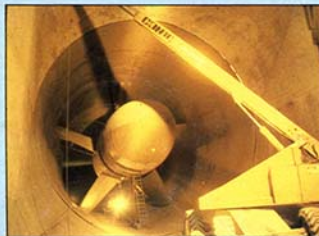
Vauxhall-Opel Passenger Car Marketing,
Vauxhall Motors Limited, Luton, England V2547 Published April, 1982

Your Vauxhall dealer:



Haines + Strange Ltd

Albion Street, Cheltenham, GL52 2RH
Telephone: 0242 25252



Vauxhall. Backed by the world-wide resources of General Motors.

Vauxhall cars are designed in Europe specifically to meet the demanding requirements of European motorists. The advanced technology in today's Vauxhalls though, is made possible by the Company being part of General Motors, the world's largest car and truck manufacturer. At General Motors' 330-acre Technical Centre in the US, research and development facilities are on an unrivalled scale.

Aerodynamics, new engines, transmissions, electronics, new propellants, manufacturing techniques - these and every other aspect of car design are the subject of intensive development providing backing for General Motors' divisions throughout the world. The facilities are further strengthened by General Motors' research and development centres such as the Millbrook

Proving Ground in the UK. It enables Vauxhall to introduce new technology and advanced design features ahead of the field thus benefiting our customers. It is well-proven technology aimed at designing fuel-efficient, stylish and practical cars that represent outstanding value for money.