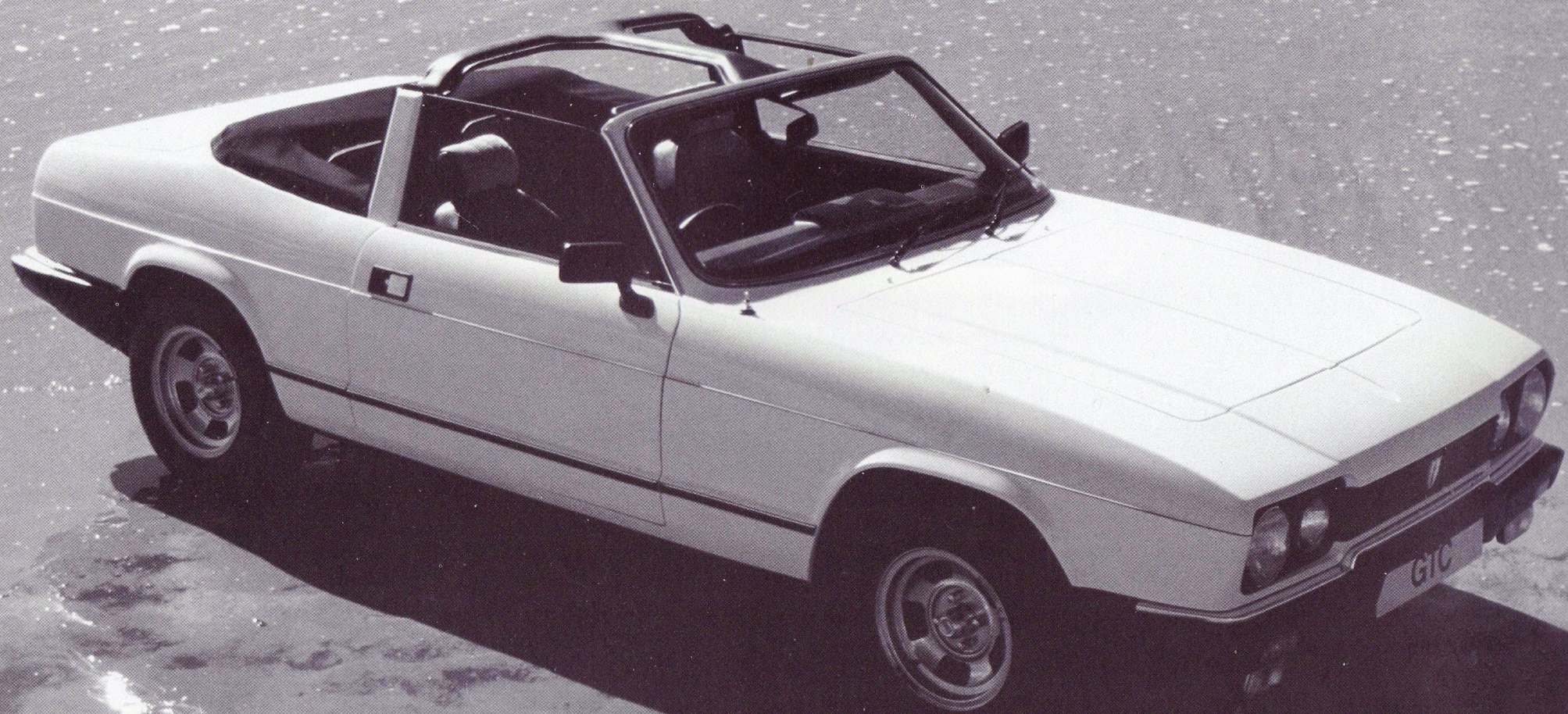




SCIMITAR









Scimitar GTC

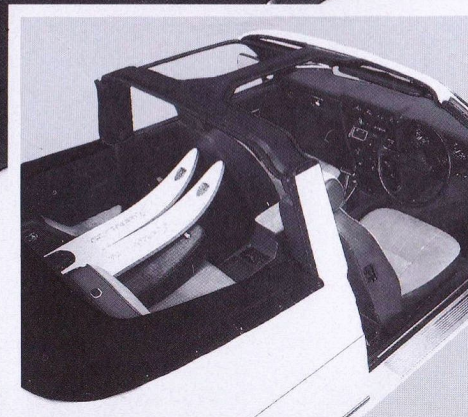
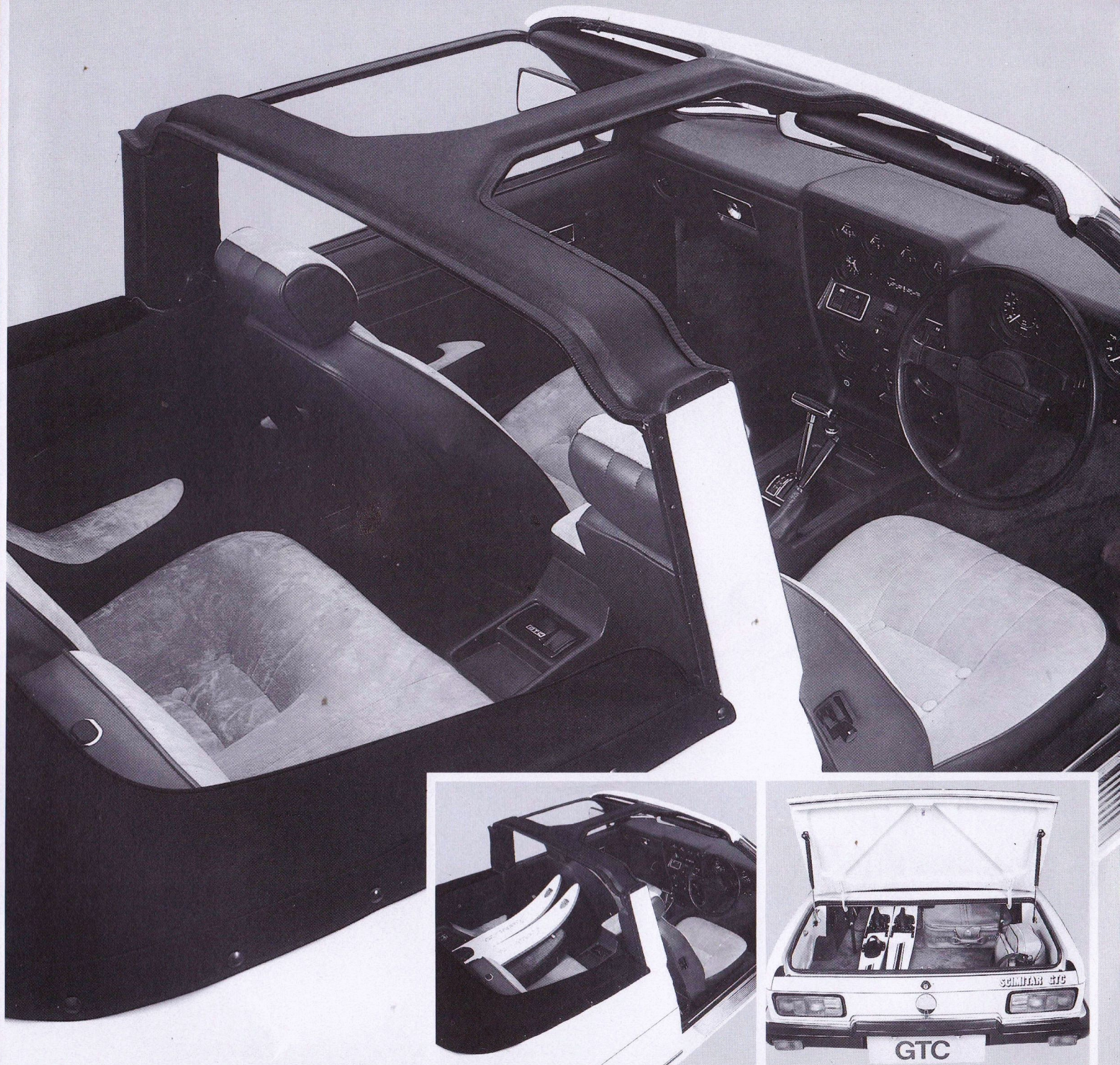
A stylish and sophisticated high performance 4 seater convertible. Ideal for pleasure and business, derived from the thoroughbred GTE, this car is destined to become a classic in its own right.

As a reminder of your earlier sports car days or the realisation of a dream, the GTC is the vehicle. The exhilaration of an open car is provided for the whole family with ample luggage space as well.

With 4 passengers there is 9 cubic feet of boot space, with additional space behind the rear seats when the hood is up.

The rear seats can be folded down individually, and with both down the total storage space expands to a massive 23 cubic feet.

An exciting, versatile and practical car to drive and to be seen in.





Scimitar GTE

Accepted throughout the motoring world as the original high performance estate, the GTE continues to woo many away from the mass produced alternatives. The style and concept of the GTE make it an original car for individualists.

The GTE is a successful combination of performance and practicality for both business and social needs. With all 4 seats occupied the luggage space is a good 20 cubic feet. The rear seats fold down individually, and with both folded flat, a cavernous 40 cubic feet is provided. Luggage access is through the rear tailgate.

This original and individual car so reminiscent of traditional sports cars in its performance and feel, at the same time provides the modern inter-city executive with effortless motorway travel.

