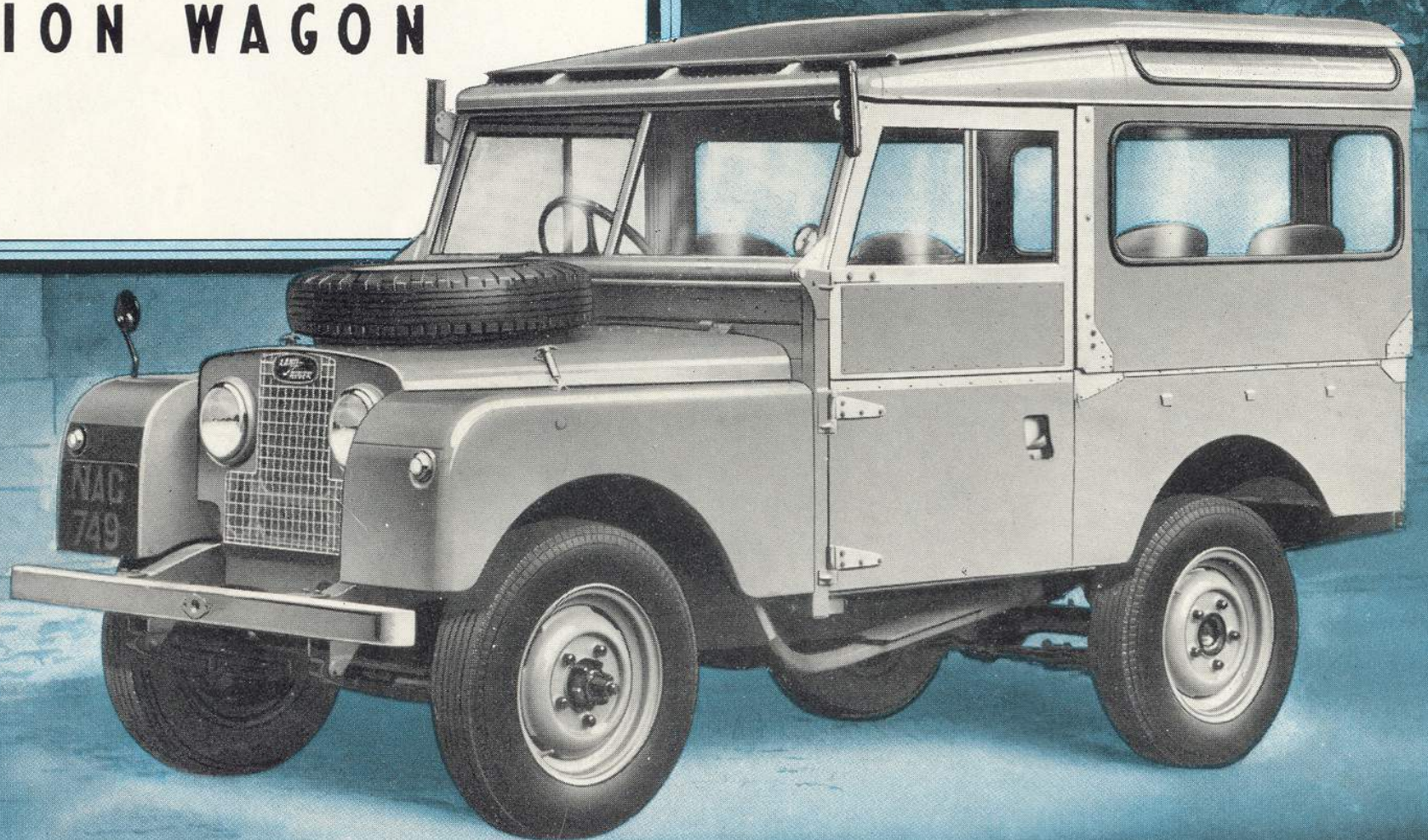




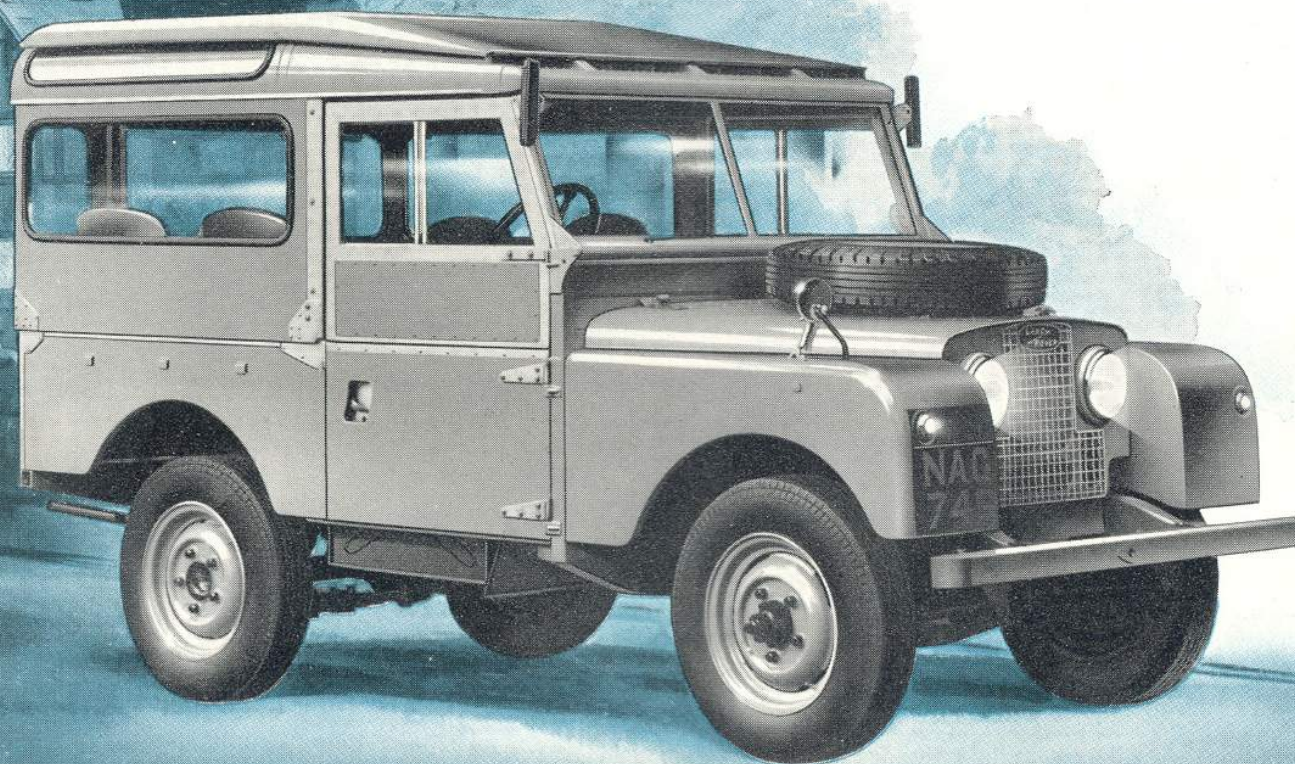
The **LAND** 
 **ROVER**

**4-WHEEL DRIVE
STATION WAGON**



The **LAND- ROVER**

**4-WHEEL DRIVE
STATION WAGON**



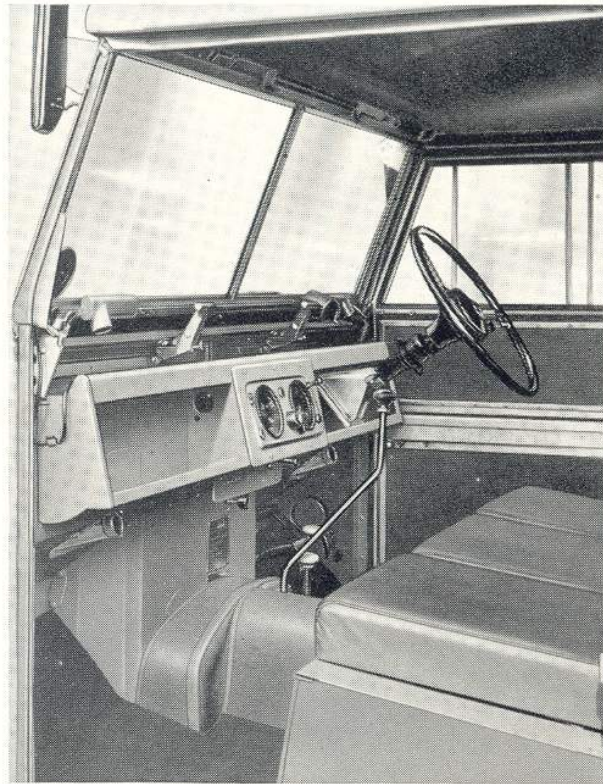
Here's a Station Wagon with a difference. It's the famous 4-wheel drive Land-Rover, with all the features of "the world's most versatile vehicle". It's for planes, meeting people . . . and for meeting a whole host of occasions this is the ideal vehicle. Fast, comfortable, economical and completely at home on every kind of road surface, the Land-Rover gives you 8 forward speeds, 2 reverse speeds and all the mobility and tenacity of 4-wheel drive.

The front compartment seats driver and two passengers, and four more seats in the rear compartment can be folded back to give a really useful load space. All body panels are of strong, light, and non-corrodible aluminium alloy.

—a 7-seater version of the
he toughness and reliability
for meeting trains, meeting



The rear compartment has plenty of room for four passengers on individual foam rubber tip-up seats. A wide rear door, opening from the side, and a folding step give easy access.

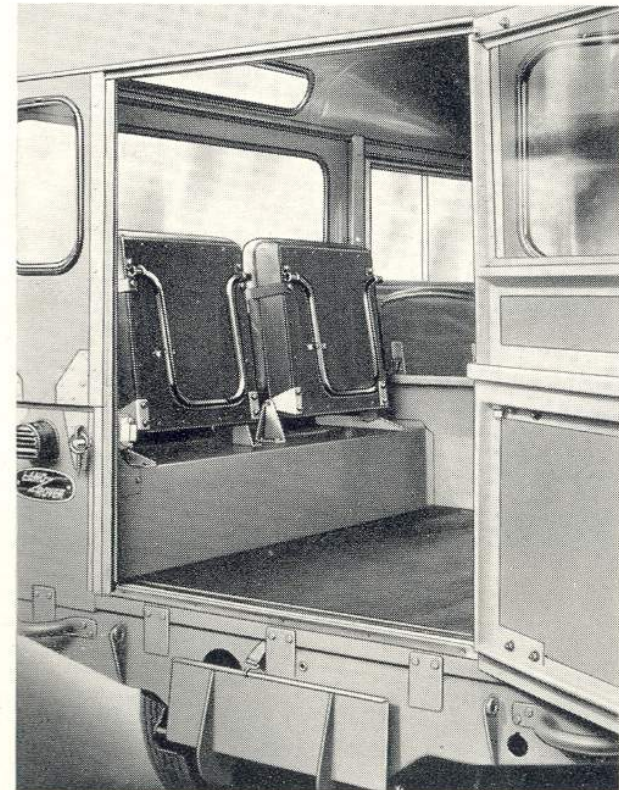


The front compartment will accommodate driver and two passengers. The dashboard has two handy parcel shelves, twin scuttle ventilators are fitted, and particular attention has been paid to thorough weather-proofing. Optional extras include a radio and heaters for front and rear compartments.



By Appointment to the late King George VI
Manufacturers of Land-Rovers
The Rover Co. Ltd.

The four rear seats can be folded back to give ample room for carrying extra-bulky loads. The roof is fitted with a ventilator and roof lamp and the large side windows, rear windows and curved Perspex roof panels give excellent all-round visibility.





C H A S S I S S P E C I F I C A T I O N

ENGINE. Flexibly mounted on rubber at four points. 4 cylinders, bore 77.8 mm. (3.063 ins.), stroke 105 mm. (4.134 ins.), capacity 1997 cc. (121.9 cu. ins.). Maximum B.H.P. 52 at 4,000 r.p.m. Maximum torque 101 lb./ft. (14 mKg.) at 1,500 r.p.m., compression ratio 6.8 : 1. Nickel chrome steel three-bearing counterbalanced crankshaft of ample dimensions. Camshaft in crankcase driven by double roller silent chain with hydraulic tensioner. Firing order 1,3,4,2.

VALVES. Overhead inlet valves operated by rocker and push rod from camshaft. Side exhaust valves with inserted valve seats operated by rocker in direct contact with camshaft.

PISTONS. Aluminium. Inverted V-shaped head to conform to patent design of semi-spherical combustion chamber giving increased compression turbulence. Two compression rings and two scraper rings fitted.

CLUTCH. Single dry plate, 9 ins. (230 mm.) diameter.

DYNAMO. Automatic voltage regulator, 12v.

STARTER. Operates on flywheel.

CARBURETTOR. Downdraught.

PETROL FILTER. Mounted on engine side of dash.

AIR CLEANER. Centrifugal and oil-bath type.

TRANSMISSION. Provision for eight forward speeds and two reverse. Transmission to rear and front axle by open propeller shaft via two-speed transfer box.

BRAKES. Hydraulically operated foot brakes requiring very light pedal pressure and infrequent adjustment. Mechanically actuated handbrake operates on transmission shaft to rear axle.

REAR AXLE. Semi-floating, spiral bevel type. Ratio 4.7 : 1.

FRONT AXLE. Fitted with differential similar to rear axle. Drive to front wheels through totally enclosed universal joints.

COOLING SYSTEM. Pump and fan, thermostatically controlled. Capacity 17 pints (9.75 litres).

LUBRICATION. By pressure from gear type pump forcing oil to all bearings, timing chain and valve gear. Capacity 10 pints (5.5 litres).

GEARS. Four forward speeds and reverse. Two-speed transfer box in conjunction with main gearbox gives eight forward speeds and two reverse. Ratios :

Gearbox	Transfer box	
	High ratio	Low ratio
First gear ...	16.171	40.688
Second gear ...	11.026	27.742
Third gear ...	7.435	18.707
Top gear ...	5.396	13.578
Reverse gear ...	13.745	34.585

IGNITION. Coil and battery, automatic advance. Battery 12v. 51 amp. hr.

CHASSIS. Side and cross members of box section forming exceptionally rigid assembly.

STEERING. Worm and nut, 15 : 1 ratio. Right or left-hand steering as required.

FUEL SUPPLY. 10-gallon (45 litres) tank under right-hand seat.

SPRINGS. Semi-elliptic front and rear. Telescopic type shock absorbers front and rear.

WHEELS. Detachable disc wheels with 16 in. x 6.00 tyres.

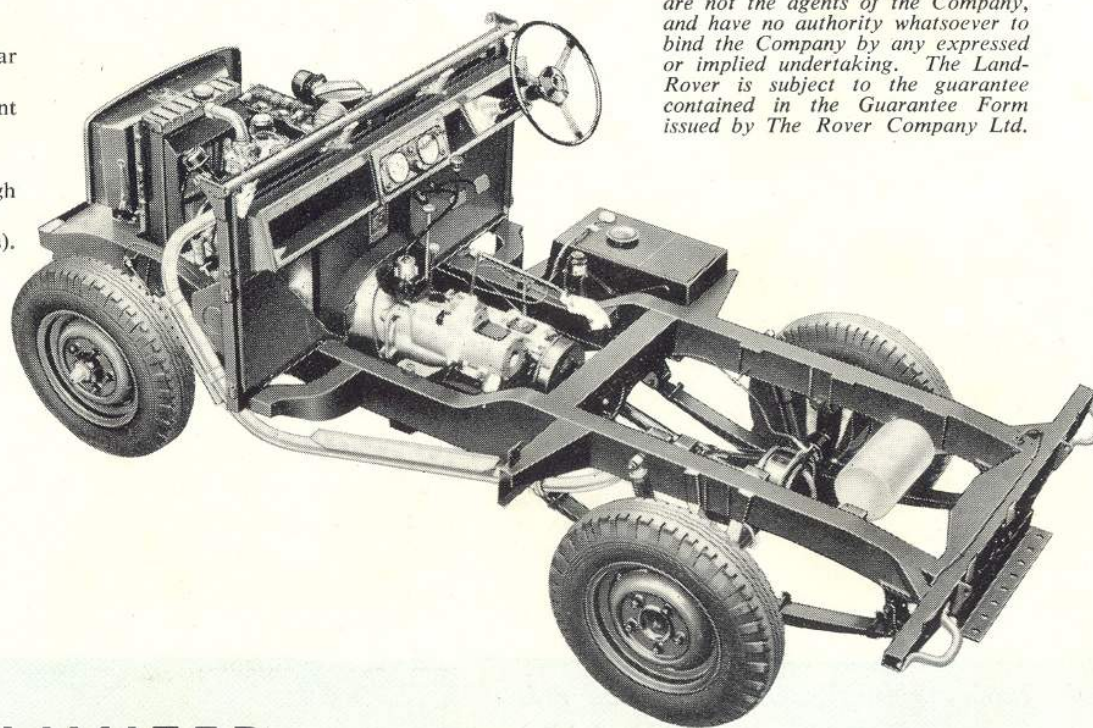
DIMENSIONS. Overall width 62⁹/₁₆ ins. (1.59 m.) approx. Overall length 140³/₄ ins. (3.58 m.) approx. Wheelbase 86 ins. (2.18 m.). Track 50 ins. (1.27 m.). Height, unladen, 76 ins. (1.93 m.). Weight, unladen, 2,702 lb. (1,226 Kgs.). Turning circle 37 ft. (11.28 m.).

BODY. Body panels of non-corrodible light alloy, all external steel fittings heavily galvanised.

COLOUR FINISH. Bodywork : light grey. Upholstery : blue.

The Rover Company Limited reserves the right to alter specifications, designs or prices without notice and without incurring any obligation.

Persons dealing in the Company's goods are not the agents of the Company, and have no authority whatsoever to bind the Company by any expressed or implied undertaking. The Land-Rover is subject to the guarantee contained in the Guarantee Form issued by The Rover Company Ltd.



THE ROVER COMPANY LIMITED

SOLIHULL • BIRMINGHAM • ENGLAND

Telephone: Sheldon 2461. Telegrams: Rover, Solihull. Service Depot: SOLIHULL. Telegrams: Rovrepair, Solihull.

London Showrooms: DEVONSHIRE HOUSE, PICCADILLY, W.1. Telephone: Grosvenor 3252.

London Service Depot: SEAGRAVE ROAD, FULHAM, S.W.6.

Telephone: Fulham 1221.

Telegrams: Rovrepair, Wesphone, London.

The name Land-Rover is a registered Trade Mark of The Rover Company Limited.