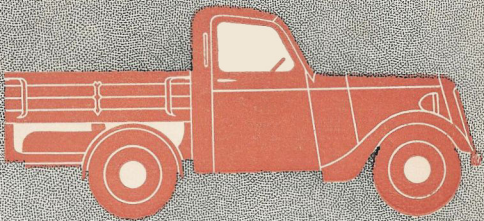
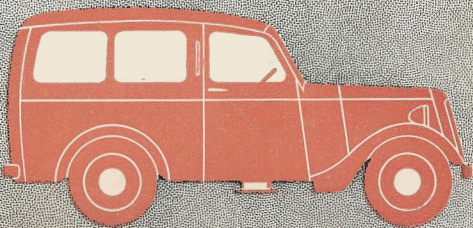
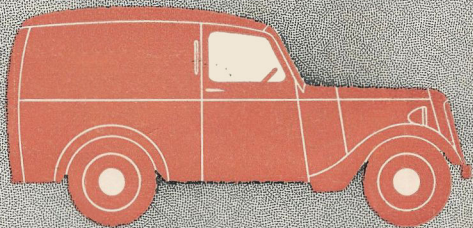
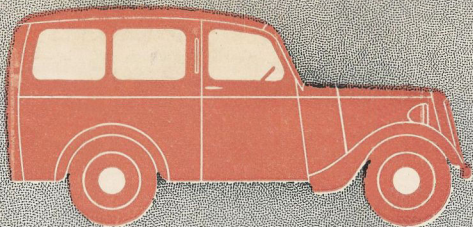


4 famous

BRADFORDS



BY JOWETT OF BRADFORD

Here are the four famous Bradfords

which Jowetts of Idle, Bradford, Yorks., are building; the 10 cwt. Van, the drop-side Lorry, the six-seater Utility and the Utility de Luxe. Both the utilities are available without rear seats, but otherwise to the same specification, as 4-light vans. Bradfords have made a great reputation in the light commercial field since the war, continuing to offer sturdy enduring vehicles which can be run at the lowest possible operating cost. The basic design of a horizontally opposed, water cooled, four-stroke twin cylinder unit was first introduced by Jowetts in 1906, so nearly 50 years of development have gone into these sturdy Yorkshire vehicles. The declared policy of incorporating modifications when proved, rather than changing details each season, is continued, and thus the 1951 models have only detail alterations as compared with their highly successful predecessors, these new features including extra finish and new bumper design, and 12 volt electrical equipment.

STRONGER CHASSIS. The Bradford Chassis follows the general design of the well-known pre-war models but has been considerably strengthened to take all the normal wear and tear of a commercial vehicle. The vans and lorry have 10 cwt. springs, the utilities 8 cwt.

MORE POWER. Here is a big forward stride. The engine, which has always been one of the sturdiest and most economical in the world, has been modified to include all the experience gained since the war in many markets. The horizontally opposed twin cylinder water cooled 1,005 c.c. engine still has a nominal rating of 8 h.p. but develops 25 b.h.p. at 3,500 r.p.m., an increase of 6 b.h.p. The power is now transmitted through a Borg & Beck clutch and a 3-speed synchromesh easy change gearbox. Bigger bearing surfaces promote even longer life. And, of course, the fewer, sturdier moving parts mean easy maintenance and provide the capacity this engine has for hard slogging under all conditions all over the world.

SPECIAL PURPOSES. For special body purposes the BRADFORD chassis can be supplied either as a "drive-away" chassis (fitted with a temporary box seat) or as a "cab" chassis which has the cab fitting complete and is ready for the body-building behind the cab. At present the chassis is not available on the home market.

EXPORT MODELS. All BRADFORDS are available with left-hand steering and metric instruments for export. Overseas BRADFORDS are fitted with export air cleaners.

CHASSIS SPECIFICATION

POWER UNIT	Engine, clutch and gearbox in one unit.
ENGINE	Two cylinder, horizontally opposed, water cooled. Swept volume—1,005 c.c. bore $3\frac{1}{8}$ ins. (79.4 mm.); stroke 4 ins. (101.6 mm.). Power output—25 h.p. at 3,500 r.p.m. Large diameter steel-bucket big end bearings.
GEARBOX	Three speed synchromesh. Ratios: top 4.89:1; 2nd, 9.25:1; 1st, 19:1; Rev., 19:1.
CLUTCH	Borg and Beck.
COOLING	Thermostatically controlled thermo-syphon. Fan available for tropics.
CHASSIS	Immensely strong, with side members of deep box section. Tubular cross-members, wide-apart spring centres to check roll. Hydraulic shock absorbers. Turning circle: 34 ft. (10.35 m.). Ground clearance: $7\frac{1}{2}$ ins. (19 cm.) Approx. weight with body: 14 cwt. (725 kg.). Wheelbase 7 ft. 6 ins.; track 4 ft. 0½ in.
BRAKES	Girling. Centre hand brake lever operates on rear wheels.
STEERING	"Bishop" cam. Finger-light operation.
PETROL TANK	In fully protected position amidships. 5½ gallons (25 litres).
BATTERY	12-volt. Lucas 5 lamp system for lighting; coil ignition.
WHEELS	Five ventilated disc (easy-clean) wheels (3 ins. × 16 ins. × 16 ins.) with 16 × 5.00 tyres. Spare housed in compartment behind rear number plate.
SPRINGS	Half elliptic with silent bushes.
BODY	Designed for maximum strength with minimum unladen weight. Main body joints steel armoured. Full width rear doors with metal check hinges. Wide front doors. Single bucket seats. Ample leg room. Smart general appearance.
EQUIPMENT	All models: speedometer, petrol gauge, oil pressure gauge, ignition warning light, ammeter, switches, starter button and air strangler, mounted centrally on new dash panel with concealed illumination. Ample glove box in instrument board. A steering column: horn push, switch for concealed trafficators and headlight dimming switch. Electric screen wiper. Driving mirror. Full kit of tools, licence holder, number plates, electric horn, spare wheel with tyre and tube, safety glass all round, front bumper. On de luxe models only: door step, rear bumper, driver's wheel. On van only: roof-light at rear for after-dark unloading.

Please note that all specifications and prices quoted are subject to alteration without notice.

BODY DIMENSIONS

VAN AND UTILITY MODELS

WIDTH INSIDE	4 ft. 6 in.	137 cm.
WIDTH BETWEEN ARCHES	3 ft. 3½ in.	99.7 cm.
LENGTH INSIDE BEHIND DRIVER	5 ft. 3½ in.	146 cm.
LENGTH OF FLOOR	5 ft. 3½ in.	161.3 cm.
MAX. INSIDE LENGTH	9 ft. 0 in.	274 cm.
MAX. HEIGHT INSIDE	4 ft. 11 in.	115.5 cm.
LOADING HEIGHT	22 in.	57.1 cm.
WIDTH DOOR OPENING	3 ft. 11 in.	119.4 cm.
HEIGHT DOOR OPENING	3 ft. 4 in.	101.6 cm.

CAPACITY BEHIND SEAT	78 cu. ft.	2,152 cu.m.
CAPACITY DRIVER'S CAB	15 cu. ft.	368 cu.m.
FLOOR SPACE	20 sq. ft.	1.87 sq.m.
OVERALL LENGTH	12 ft. 0 in.	365.7 cm.
OVERALL WIDTH	5 ft. 0 in.	152.4 cm.
OVERALL HEIGHT (loaded)	5 ft. 9 in.	175.2 cm.

LORRY BODY

PLATFORM	5 ft. 6 in. × 4 ft. 11 in.	168 cm. × 150 cm.
PLATFORM AREA	27 sq. ft.	2.52 sq. m.

GUARANTEE

JOWETT CARS LIMITED will give to the Purchaser of a new vehicle of the Company's manufacture a Guarantee or Warranty in the following terms:—

All warranties, conditions and liabilities whatever whether express or implied by Statute, Common Law, trade usage or custom, or in any other manner are expressly excluded and in lieu thereof the following is substituted:—

(1) If any defect shall be found in the goods as hereinafter defined or any part or parts thereof and the alleged defective part or parts shall be returned, carriage paid, to the Dealer who supplied the vehicle, for onward transmission to the Company's works, the Company undertakes to examine the same and if, on such examination, any fault or defect be found therein which is due to defective material or workmanship, the Company will repair the defective part or (at the Company's option) supply, free of charge, a new part in place thereof, the repaired or new part to be delivered to the purchaser at the Company's works.

(2) For the purpose of the foregoing undertaking the term "goods" means only new cars, commercial vehicles, or chassis or parts thereof (including replacement parts) actually manufactured by the Company. Tyres, instruments, electrical equipment, proprietary articles and any other goods (including coachwork) not actually manufactured by the Company are expressly excluded. If the actual makers of any of such last mentioned articles give any warranty or guarantee in respect of their products, the Company will endeavour to obtain the benefit of the same for the purchaser but the Company shall be under no liability or obligation in respect thereof or in respect of the Purchaser's Claim to the makers of the article concerned.

(3) The foregoing undertaking does not apply to second-hand goods nor to any goods which have not been purchased direct from the Company or from a Motor Trader authorised by the Company to deal in its products.

(4) The benefit of this warranty is not assignable save with the written consent of the Company.

(5) No person firm or company dealing in the Company's products, whether described as Agent of the Company or not has any power or authority to vary the terms of the foregoing undertaking or warranty or to give any guarantee or warranty in respect of the Company's products or to enter into any liability or obligation or make any representations on behalf of the Company and the Company will not be bound by any act omission or default on the part of any such person firm or company.

(6) The Company will not be answerable for personal injuries or consequential or resulting damage or loss arising from any defects, whether due to defective materials or workmanship or not and the undertaking and warranty hereinbefore given shall not apply to any defect or anything or happening

(i) During or caused by racing, pacemaking, trials or speed tests or contests.

(ii) As a result of wear and tear, accident, misuse or neglect.

(iii) In or to any goods which have been altered in any way after leaving the Company's works.

(iv) In or to any goods that have been let out on hire (other than the initial acquisition on Hire Purchase terms).

(v) In or to any goods on which the identification numbers or plates have been altered or removed.

(7) The foregoing undertaking and warranty shall not apply to any goods after a period of six calendar months from the date when the goods were delivered new, nor to any chassis fitted with a body other than that provided by the Company unless the approval in writing to the body, after fixing, has been obtained.

(8) The decision of the Company as to whether or not any fault or defect is due to faulty materials or workmanship shall be final and conclusive. After the expiration of six days from the notification by the Company of its rejection of any claim the part or parts submitted may be scrapped or returned to the sender, carriage forward.

CONDITIONS

(a) The Purchaser shall notify the Company in writing on the Guarantee form supplied of his purchase giving his name and address, the price paid, the vehicle and chassis numbers, the registration number of the vehicle and the name and address of the seller.

(b) Any part to which the foregoing warranty is claimed to apply shall be promptly returned to the Dealer who supplied the same for onward transmission to the Company.

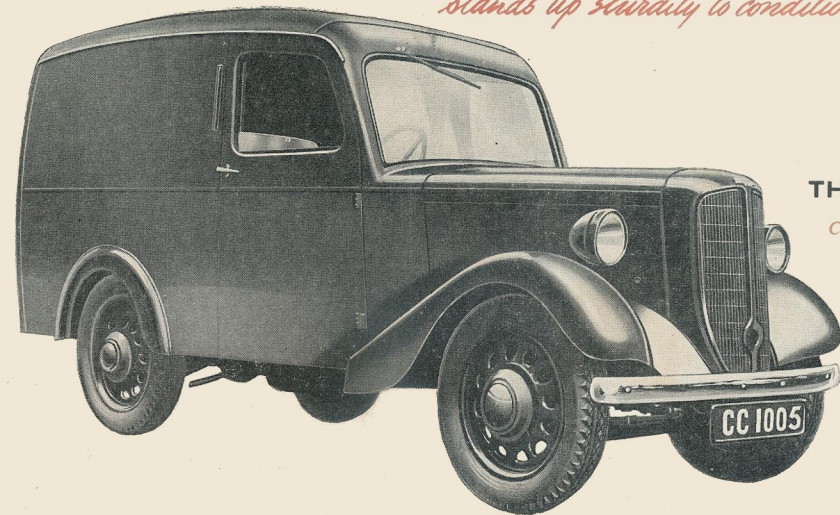
(c) The Purchaser shall before despatching the goods send to the Dealer a full description of the alleged defects and the grounds upon which the claim is made stating also the engine and chassis numbers of the vehicle from which the said part or parts were taken. The Purchaser shall pay all transport charges.

(d) The Purchaser shall make his vehicle available to the said Dealer to enable him to carry out his Free After Sales Service, and when this attention falls due, and shall under no circumstances delay this.

GUARANTEE AS TO REPAIRS AND OVERHAULS

The Guarantee and Conditions set forth a above cover and are applicable to repairs executed by the Company at its works, save that the period of Guarantee is three calendar months from the date of completion of repairs or overhaul.

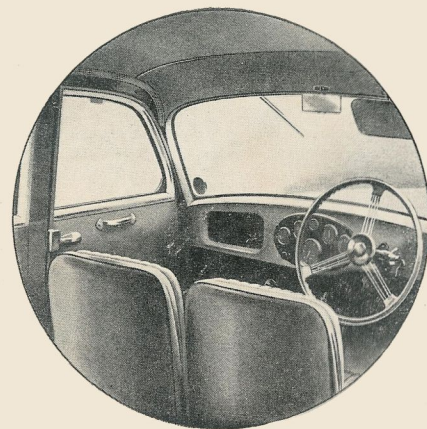
stands up sturdily to conditions anywhere in the world



THE BRADFORD 10 CWT VAN

Colours: Green, Blue or Grey with Black Wings

Biggest Body Capacity (93 cu. ft.)—10 cwt. payload with an 8 h.p. engine. Economy—owners everywhere pay tribute to the Bradford's low petrol consumption. Reliability—the balanced power of a horizontally opposed twin cylinder engine with its fewer, stronger working parts.



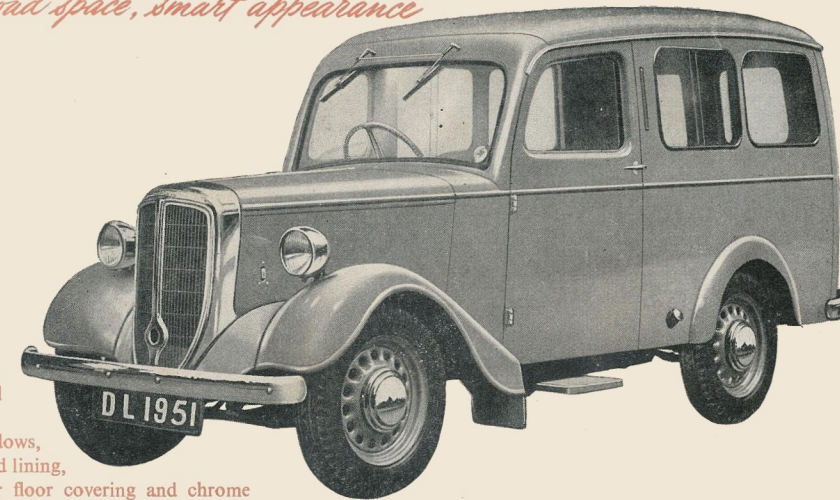
The de luxe driving compartment: good visibility and spaciousness

passenger comfort, big load space, smart appearance

THE BRADFORD VAN OR UTILITY DE LUXE

Colour: Catalina Tan

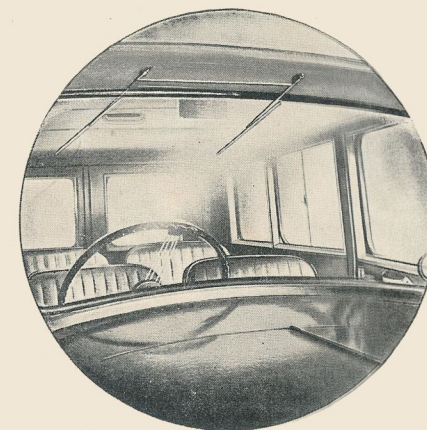
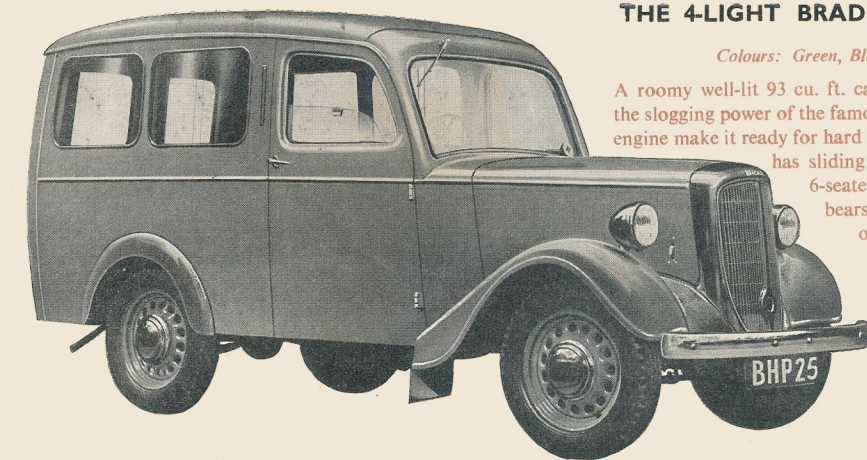
The de luxe body of this utility car gives well sprung, comfortable seating for four passengers with ample reserve space for luggage. The finish is very high quality in every detail and the two back seats are omitted when in van form. Sliding side windows, twin windscreen wipers, washable head lining, rexine lining to waist height, rubber floor covering and chrome radiator shell and hub covers are listed amongst the de luxe features of this popular model. The steering is light and accurate, and the ample power comes from the famous horizontally opposed twin cylinder engine—immensely strong and entirely reliable.



THE 4-LIGHT BRADFORD VAN OR UTILITY

Colours: Green, Blue or Grey with Black Wings

A roomy well-lit 93 cu. ft. capacity van—tenacious reliability and the slogging power of the famous horizontally opposed twin cylinder engine make it ready for hard work in any climate. The 4-light body has sliding side windows. When supplied as a 6-seater utility the cost per person per mile bears comparison with any other form of transport, thanks to the Bradford's remarkable petrol economy.

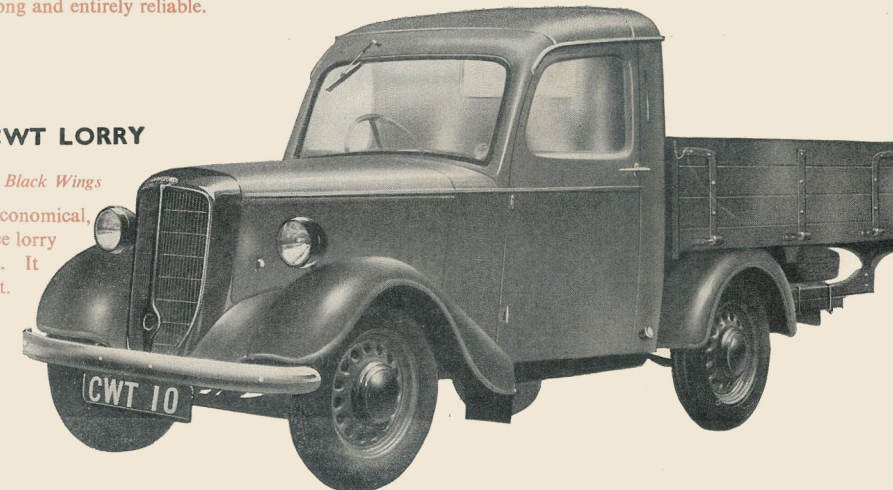


The roomy interior and comfortable seating of the Utility de luxe

THE BRADFORD 10 CWT LORRY

Colours: Green, Blue or Grey with Black Wings

Reliable—powerful and very economical, this 8 h.p. 10 cwt. general service lorry has drop sides and tailboard. It has a platform of 27 square feet.



low operating costs combined with long life

simplicity, economy, strength—thrives on hard labour