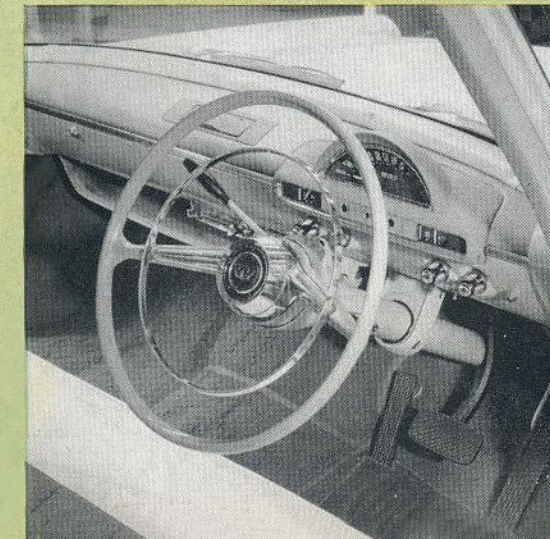


ZODIAC

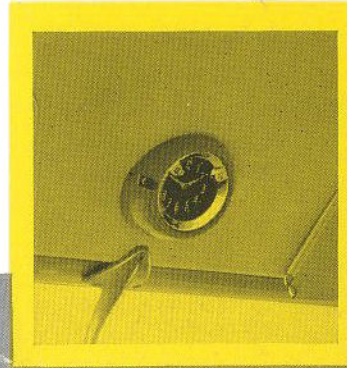


ZODIAC

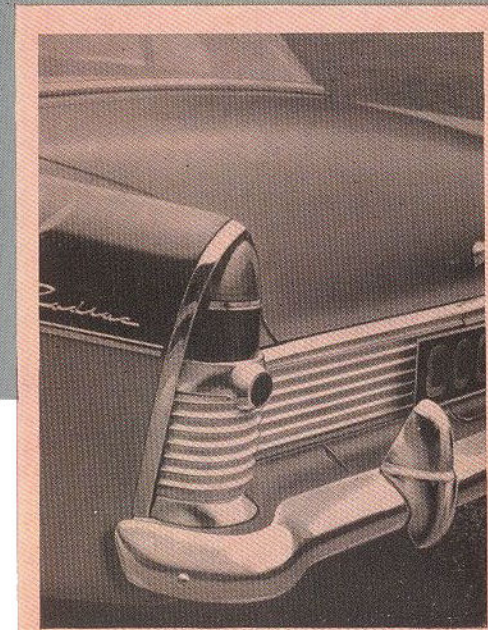


The Zodiac steering wheel with its full circle horn-ring through which the neatly grouped instruments can be clearly seen.

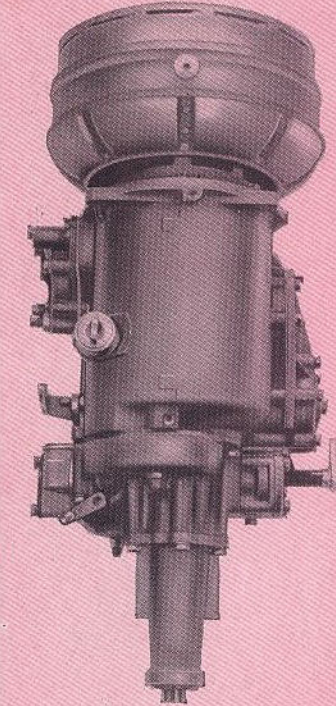
A Zodiac feature is the clock in the header panel. The roof, as in all the 'Three Graces' is lined with washable plastic material.



Beauty and comfort are features of the Zodiac interior, deep pile carpets and superb upholstery highlight the luxurious tone of the Zodiac.

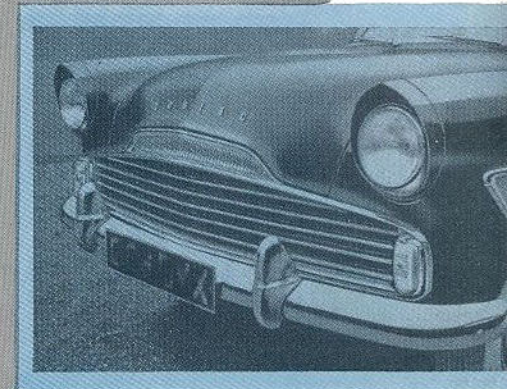


The distinctive and attractive rear-end styling completes the superb lines of the Zodiac.



Fully automatic transmission is available as an option at extra cost on the Zodiac. This two-pedal control system relieves the driver of all responsibility for gear changing whilst on the move—just move the selector to one of the positions shown on the indicator, press the accelerator and automatic transmission does the rest.

The Zodiac is Ford of Dagenham's style leader in the medium car field. Classically graceful lines, beautiful two-tone body colour combinations with matching two-tone upholstery, distinctive exterior styling, white sidewall tyres plus comfort and convenience, features which include deep pile carpets, cigar lighter, clock, windscreen washers and coat hooks, all add up to the most comfortable, powerful and completely equipped car in its class.



A styling feature is the modern treatment of the hooded headlights. Beneath these are separate parking lights which incorporate the front-turn signal lamps.



SPECIFICATION

ENGINE. 6-cylinder 2,553 cc. (155.80 cu.in. capacity. Bore 3.25 (82.55 mm.). Stroke 3.13 in. (79.50 mm.). Overhead valves. Compression ratio 7.8:1 (6.9:1 optional). Maximum B.H.P. 90/86 @ 4,400 r.p.m. Torque 137/132 @ 2,000 r.p.m.

LUBRICATION. Full pressure type to main camshaft and connecting rod bearings. Gear-driven oil pump. Full-flow type oil filter to cylinder block. Sump capacity 7 pints (3.98 litres).

COOLING SYSTEM. Water-pump and thermostat. Two-blade fan (4-blade optional for hot climates). Capacity of system 22 pints (12.5 litres).

FUEL SYSTEM. Down-draught carburettor. Oil bath air cleaner. Mechanical diaphragm type fuel pump. Fuel tank capacity 10.5 gallons (48.5 litres).

ELECTRICAL SYSTEM. 12-volt 57 amp./hr. battery (72 amp./hr. optional). Belt-driven voltage regulated generator. Oil-filled coil.

TRANSMISSION. Three-speed, synchromesh, helical gears manually operated by concentric gear change lever on steering column. Overall ratios 1st 11.08 :1, 2nd 6.40 :1, 3rd 3.90 :1, Reverse 15.06 :1. Single dry-plate clutch, hydraulically operated and with permanently lubricated ball-bearing type throw-out bearings. Full automatic transmission or overdrive available at extra cost.

SUSPENSION. Built-in 'Glide-ride' independent front suspension, directly operated coil springs mounted on hydraulic double-acting shock absorbers integral with the wheel spindle. Anti-roll torsion bar embodied. Rear suspension by longitudinal asymmetric, semi-elliptic tapered end leaf springs.

BRAKES. Hydraulic internal expanding on all four wheels, 9-in. (228.6 mm.) diameter drums. Total lining area 147.0 sq. in. (948.48 sq. cm.).

TYRES. *Standard:* 6.40 × 13 4-ply white sidewall.

Optional at extra cost: 6.40 × 13 6-ply white sidewall; 6.70 × 13 4-ply or 6-ply white sidewall. (6.70 × 13 4-ply white sidewall standard when automatic transmission supplied.)

STEERING. Recirculatory ball-type steering. Two-spoke 17-in. (431.8 mm.) diameter steering wheel. Turning circle 36 ft. (10.97 m.).

INSTRUMENTS. The instruments are located in a shrouded binnacle faired into the dashboard. They are a speedometer, odometer, fuel gauge, ammeter (temperature gauge optional), ignition warning light, turn signal warning light, and main beam indicator. The instruments are indirectly illuminated.

CONTROLS. The controls consist of a choke control, combined ignition switch and starter, windshield wiper control, lighting control and panel illumination switch. Hood release and overdrive control (when fitted) are located below the dashboard close to the steering column.

EQUIPMENT. *Standard:* Electric clock; windshield washer; cigar lighter; chrome wheel rim embellishers; white sidewall tyres; two-tone body colour and upholstery; door-operated courtesy light with manual overriding switch; two ashtrays; oil bath air cleaner; door-pull type arm-rests and front seat centre arm-rest; overrides; coat hooks.

Optional at extra cost: Automatic transmission; sump shield and fuel tank protector; reinforced front and rear suspension; hood ornament; fire extinguisher; overdrive; heater and demister; short and medium wave radio; long and medium wave radio; fuel tank locking cap; centre arm rest rear seat.

DIMENSIONS & WEIGHTS. Overall length 180.55 in. (4.5 m.). Overall width 68.87 in. (1.7 m.). Overall height (unladen) 62.00 in. (1.5 m.). Wheelbase 107.00 in. (2.7 m.). Kerb weight 2,738 lb. (1,241.9 kgs.).

Ford policy is one of continuous improvement, the right to change prices, specification, colours or equipment at any time without notice is reserved.

PUBLISHED BY EXPORT DIVISION, FORD MOTOR COMPANY LIMITED, DAGENHAM

SOLD IN U.S.A. BY FORD MOTOR COMPANY, DEARBORN, MICHIGAN.